



3400 & 3500 SERIES
TOOLBAR ROTARY HOE
PATENTED
2565-118_REV_W 02/2025
OPERATOR'S MANUAL
PART IDENTIFICATION



YETTER MANUFACTURING CO.

FOUNDED 1930

Colchester, IL 62326-0358

Toll free: 800/447-5777

309/776-3222 (Fax)

Website: www.yetterco.com

E-mail: info@yetterco.com

YETTER

FOREWORD


You've just joined an exclusive but rapidly growing club.


For our part, we want to welcome you to the group and thank you for buying a Yetter product.


We hope your new Yetter products will help you achieve both goals-increase your productivity and increase your efficiency so that you may generate more profit.


This operator's manual has been designed into four major sections: Foreword, Safety Precautions, Installation Instructions and Parts Breakdown.

This **SAFETY ALERT SYMBOL** indicates important safety messages in the manual. When you see this symbol, be alert to the possibility of **PERSONAL INJURY** and carefully read the message that follows.

 **DANGER:** Indicates an imminently hazardous situation which, if not avoided "will" result in death or serious injury. This signal word is to be limited to the most extreme situations

 **WARNING:** Indicates a potentially hazardous situation which, if not avoided, "could" result in death or serious injury.

 **CAUTION:** Indicates a potentially hazardous situation, which if not avoided, "may" result in minor or moderate injury. It may also be used to alert against unsafe practices.

 **NOTICE:** Indicates information considered important, but not hazard related (e.g., messages relating to property damage).

It is the responsibility of the user to read the operator's manual and comply with the safe and correct operating procedure and to lubricate and maintain the product according to the maintenance schedule in the operator's manual.

The user is responsible for inspecting his machine and for having parts repaired or replaced when continued use of the product would cause damage or excessive wear to the other parts.

It is the user's responsibility to deliver his machine to the Yetter dealer who sold him the product for service or replacement of defective parts, which are covered by the warranty policy.

If you are unable to understand or follow the instructions provided in this publication, consult your local Yetter dealer or contact:

YETTER MANUFACTURING CO.

309/776-4111

800/447-5777

309/776-3222 (FAX)

Website: www.yetterco.com

E-mail: info@yetterco.com

WARRANTY POLICY

Yetter Manufacturing warrants all products manufactured and sold by it against defects in material. This warranty being expressly limited to replacement at the factory of such parts or products as will appear to be defective after inspection. This warranty does not obligate the Company to bear cost of labor in replacement of parts. It is the policy of the company to make improvements without incurring obligations to add them to any unit already sold. No warranty is made or authorized to be made, other than herein set forth. This warranty is in effect for one year after purchase.

Model Number: _____

Serial Number: _____

Dealer : _____

The serial and model numbers are located on the top of the left hitch plate.

Yetter Manufacturing warrants its own products only and cannot be responsible for damage to equipment on which mounted.



SAFETY PRECAUTIONS



A brief description of signal words that may be used in this manual:

DANGER: Indicates an imminently hazardous situation which, if not avoided “will” result in death or serious injury. This signal word is to be limited to the most extreme situations.

WARNING: Indicates a potentially hazardous situation which, if not avoided, “could” result in death or serious injury.

CAUTION: Indicates a potentially hazardous situation, which if not avoided, “may” result in minor or moderate injury. It may also be used to alert against unsafe practices.

NOTICE: Indicates information considered important, but not hazard related (e.g., messages relating to property damage).

Consult your implement and tractor operator’s manual for correct and safe operating practices. Be aware of towed implement width and allow safe clearance.

Safety decals are placed on the implement to alert the operator and others to the risk of personal injury or unsafe operation during normal operations and servicing.

1. The safety decals must be kept clean and in good condition to ensure that they are legible.
2. Safety decals must be replaced if they are missing or illegible.
3. When components are replaced during repair or servicing, check that the new components include the necessary safety signs.
4. Replacement safety decals may be obtained from your local dealer.



WARNING

Read these instructions carefully to acquaint yourself with the Equipment. Working with unfamiliar equipment can lead to accidents.

Never park the equipment on a steep incline or leave the equipment running unattended.

Never clean, lubricate or adjust a machine that is in motion.

Always check that straps are secure.

Make sure latches are in pinned position when moving equipment.

Do not allow children to operate this equipment.

Do not allow riders on the equipment, trailer and/or pick-up.

Use speed and caution dictated by the terrain being traversed. Do not operate on any slope steep enough to cause tipping or loss of control.

Read and understand the operator’s manual and require all other persons who will operate the equipment to do the same.

If operating on public roadways, where legal, be certain all lighting is operating properly and observe all traffic laws.

Beware of increased stopping distances and control effort when operating with implements attached.

Be familiar with all controls and be prepared to stop equipment quickly in an emergency.

FAILURE TO HEED MAY RESULT IN PERSONAL INJURY OR DEATH.

3400 MODEL SPECIFICATIONS

MODEL NO.	NO. OF SECTIONS	TOOLBAR LENGTH	APPROX. WEIGHT
3412-101	3	149" (12'5")	1250#
3415-101	4	184" (15'4")	1600#
3421-101	6	254" (21'2")	2400#
3428-101	8	338" (28'2")	3050#
3430-101	8	366" (30'6")	3300#
3434-101	8	408" (34')	3700#

3400 ROW COVERAGES

3412-101 12' 3 SECTION HOE

42" ROWS – 3 ROWS WITH 21" OVERLAP
 40" ROWS – 3 ROWS WITH 29" OVERLAP
 38" ROWS – 3 ROWS WITH 33" OVERLAP
 36" ROWS – 4 ROWS WITH 3" OVERLAP
 34" ROWS – 4 ROWS WITH 11" OVERLAP
 32" ROWS – 4 ROWS WITH 19" OVERLAP
 30" ROWS – 4 ROWS WITH 27" OVERLAP
 28" ROWS – 5 ROWS WITH 7" OVERLAP
 26" ROWS – 5 ROWS WITH 17" OVERLAP
 24" ROWS – 6 ROWS WITH 3" OVERLAP
 22" ROWS – 6 ROWS WITH 15" OVERLAP
 20" ROWS – 7 ROWS WITH 7" OVERLAP

3415-101 15' 4 SECTION HOE

42" ROWS – 4 ROWS WITH 14" OVERLAP
 40" ROWS – 4 ROWS WITH 22" OVERLAP
 38" ROWS – 4 ROWS WITH 30" OVERLAP
 36" ROWS – 5 ROWS WITH 2" OVERLAP
 34" ROWS – 5 ROWS WITH 12" OVERLAP
 32" ROWS – 5 ROWS WITH 22" OVERLAP
 30" ROWS – 6 ROWS WITH 2" OVERLAP
 28" ROWS – 6 ROWS WITH 14" OVERLAP
 26" ROWS – 7 ROWS WITH NO OVERLAP
 24" ROWS – 7 ROWS WITH 14" OVERLAP
 22" ROWS – 8 ROWS WITH 6" OVERLAP
 20" ROWS – 9 ROWS WITH 2" OVERLAP

3421-101 21' 6 SECTION HOE

42" ROWS – 6 ROWS WITH NO OVERLAP
 40" ROWS – 6 ROWS WITH 12" OVERLAP
 38" ROWS – 6 ROWS WITH 24" OVERLAP
 36" ROWS – 7 ROWS WITH NO OVERLAP
 34" ROWS – 7 ROWS WITH 14" OVERLAP
 32" ROWS – 7 ROWS WITH 28" OVERLAP
 30" ROWS – 8 ROWS WITH 12" OVERLAP
 28" ROWS – 9 ROWS WITH NO OVERLAP
 26" ROWS – 9 ROWS WITH 18" OVERLAP
 24" ROWS – 10 ROWS WITH 12" OVERLAP
 22" ROWS – 11 ROWS WITH 10" OVERLAP
 20" ROWS – 12 ROWS WITH 12" OVERLAP

3428-101 28' 8 SECTION HOE

42" ROWS – 8 ROWS WITH NO OVERLAP
 40" ROWS – 8 ROWS WITH 16" OVERLAP
 38" ROWS – 8 ROWS WITH 32" OVERLAP
 36" ROWS – 9 ROWS WITH 12" OVERLAP
 34" ROWS – 9 ROWS WITH 30" OVERLAP
 32" ROWS – 10 ROWS WITH 16" OVERLAP
 30" ROWS – 11 ROWS WITH 6" OVERLAP
 28" ROWS – 12 ROWS WITH NO OVERLAP
 26" ROWS – 12 ROWS WITH 24" OVERLAP
 24" ROWS – 14 ROWS WITH NO OVERLAP
 22" ROWS – 15 ROWS WITH 6" OVERLAP
 20" ROWS – 16 ROWS WITH 16" OVERLAP

3430-101 30' 8 SECTION HOE

42" ROWS – 8 ROWS WITH 28" OVERLAP
 40" ROWS – 9 ROWS WITH 4" OVERLAP
 38" ROWS – 9 ROWS WITH 22" OVERLAP
 36" ROWS – 10 ROWS WITH NO OVERLAP
 34" ROWS – 10 ROWS WITH 24" OVERLAP
 32" ROWS – 11 ROWS WITH 12" OVERLAP
 30" ROWS – 12 ROWS WITH 4" OVERLAP
 28" ROWS – 13 ROWS WITH NO OVERLAP
 26" ROWS – 14 ROWS WITH NO OVERLAP
 24" ROWS – 15 ROWS WITH 4" OVERLAP
 22" ROWS – 16 ROWS WITH 12" OVERLAP
 20" ROWS – 18 ROWS WITH 4" OVERLAP

3434-101 34' 8 SECTION HOE

42" ROWS – 9 ROWS WITH 28" OVERLAP
 40" ROWS – 10 ROWS WITH 6" OVERLAP
 38" ROWS – 10 ROWS WITH 26" OVERLAP
 36" ROWS – 11 ROWS WITH 10" OVERLAP
 34" ROWS – 11 ROWS WITH 32" OVERLAP
 32" ROWS – 12 ROWS WITH 22" OVERLAP
 30" ROWS – 13 ROWS WITH 16" OVERLAP
 28" ROWS – 14 ROWS WITH 14" OVERLAP
 26" ROWS – 15 ROWS WITH 14" OVERLAP
 24" ROWS – 16 ROWS WITH 22" OVERLAP
 22" ROWS – 18 ROWS WITH 10" OVERLAP
 20" ROWS – 20 ROWS WITH 6" OVERLAP

3500 MODEL SPECIFICATIONS

MODEL NO.	NO. OF SECTIONS	TOOLBAR LENGTH (OPEN)	TOOLBAR LENGTH (FOLDED)	APPROX. WEIGHT
3521-101	4	252" (21')	130" (10'10")	3100#
3528-101	8	336" (28')	184" (14'4")	3850#
3530-101	8	364" (30'2")	186" (15'6")	4100#
3534-101	8	406" (33'10")	207" (17'3")	4500#
3541-101	9	490" (40'10")	249" (20'9")	5000#
3546-101	9	550" (45'10")	309" (25'10")	5500#
3554-101	12	650" (54'2")	340" (28'4")	8400#
3560-101	13	726" (60'6")	389" (32'5")	10,000#

3500 ROW COVERAGES

3521-101 21' 4 SECTION HOE

42" ROWS – 6 ROWS WITH NO OVERLAP
 40" ROWS – 6 ROWS WITH 12" OVERLAP
 38" ROWS – 6 ROWS WITH 24" OVERLAP
 36" ROWS – 7 ROWS WITH NO OVERLAP
 34" ROWS – 7 ROWS WITH 14" OVERLAP
 32" ROWS – 7 ROWS WITH 28" OVERLAP
 30" ROWS – 8 ROWS WITH 12" OVERLAP
 28" ROWS – 9 ROWS WITH NO OVERLAP
 26" ROWS – 9 ROWS WITH 18" OVERLAP
 24" ROWS – 10 ROWS WITH 12" OVERLAP
 22" ROWS – 11 ROWS WITH 10" OVERLAP
 20" ROWS – 12 ROWS WITH 12" OVERLAP

3528-101 28' 8 SECTION HOE

42" ROWS – 8 ROWS WITH NO OVERLAP
 40" ROWS – 8 ROWS WITH 16" OVERLAP
 38" ROWS – 8 ROWS WITH 32" OVERLAP
 36" ROWS – 9 ROWS WITH 12" OVERLAP
 34" ROWS – 9 ROWS WITH 30" OVERLAP
 32" ROWS – 10 ROWS WITH 16" OVERLAP
 30" ROWS – 11 ROWS WITH 6" OVERLAP
 28" ROWS – 12 ROWS WITH NO OVERLAP
 26" ROWS – 12 ROWS WITH 24" OVERLAP
 24" ROWS – 14 ROWS WITH NO OVERLAP
 22" ROWS – 15 ROWS WITH 6" OVERLAP
 20" ROWS – 16 ROWS WITH 16" OVERLAP

3530-101 30' 8 SECTION HOE

42" ROWS – 8 ROWS WITH 28" OVERLAP
 40" ROWS – 9 ROWS WITH 4" OVERLAP
 38" ROWS – 9 ROWS WITH 22" OVERLAP
 36" ROWS – 10 ROWS WITH NO OVERLAP
 34" ROWS – 10 ROWS WITH 24" OVERLAP
 32" ROWS – 11 ROWS WITH 12" OVERLAP
 30" ROWS – 12 ROWS WITH 4" OVERLAP
 28" ROWS – 13 ROWS WITH NO OVERLAP
 26" ROWS – 14 ROWS WITH NO OVERLAP
 24" ROWS – 15 ROWS WITH 4" OVERLAP
 22" ROWS – 16 ROWS WITH 12" OVERLAP
 20" ROWS – 18 ROWS WITH 4" OVERLAP

3534-101 34' 8 SECTION HOE

42" ROWS – 9 ROWS WITH 28" OVERLAP
 40" ROWS – 10 ROWS WITH 6" OVERLAP
 38" ROWS – 10 ROWS WITH 26" OVERLAP
 36" ROWS – 11 ROWS WITH 10" OVERLAP
 34" ROWS – 11 ROWS WITH 32" OVERLAP
 32" ROWS – 12 ROWS WITH 22" OVERLAP
 30" ROWS – 13 ROWS WITH 16" OVERLAP
 28" ROWS – 14 ROWS WITH 14" OVERLAP
 26" ROWS – 15 ROWS WITH 14" OVERLAP
 24" ROWS – 16 ROWS WITH 22" OVERLAP
 22" ROWS – 18 ROWS WITH 10" OVERLAP
 20" ROWS – 20 ROWS WITH 6" OVERLAP

3541-101 41' 9 SECTION HOE

42" ROWS – 11 ROWS WITH 28" OVERLAP
 40" ROWS – 12 ROWS WITH 10" OVERLAP
 38" ROWS – 12 ROWS WITH 34" OVERLAP
 36" ROWS – 13 ROWS WITH 22" OVERLAP
 34" ROWS – 14 ROWS WITH 14" OVERLAP
 32" ROWS – 15 ROWS WITH 10" OVERLAP
 30" ROWS – 16 ROWS WITH 10" OVERLAP
 28" ROWS – 17 ROWS WITH 14" OVERLAP
 26" ROWS – 18 ROWS WITH 22" OVERLAP
 24" ROWS – 20 ROWS WITH 10" OVERLAP
 22" ROWS – 22 ROWS WITH 6" OVERLAP
 20" ROWS – 24 ROWS WITH 10" OVERLAP

3546-101 46' 9 SECTION HOE

42" ROWS – 12 ROWS WITH 4" OVERLAP
 40" ROWS – 13 ROWS WITH 30" OVERLAP
 38" ROWS – 14 ROWS WITH 16" OVERLAP
 36" ROWS – 15 ROWS WITH 10" OVERLAP
 34" ROWS – 17 ROWS WITH NO OVERLAP
 32" ROWS – 17 ROWS WITH 6" OVERLAP
 30" ROWS – 18 ROWS WITH 10" OVERLAP
 28" ROWS – 19 ROWS WITH 18" OVERLAP
 26" ROWS – 21 ROWS WITH 4" OVERLAP
 24" ROWS – 22 ROWS WITH 22" OVERLAP
 22" ROWS – 25 ROWS WITH NO OVERLAP
 20" ROWS – 27 ROWS WITH 10" OVERLAP

3554-101 54' 12 SECTION HOE

42" ROWS – 15 ROWS WITH 20" OVERLAP
 40" ROWS – 16 ROWS WITH 10" OVERLAP
 38" ROWS – 17 ROWS WITH 4" OVERLAP
 36" ROWS – 18 ROWS WITH 2" OVERLAP
 34" ROWS – 19 ROWS WITH 4" OVERLAP
 32" ROWS – 20 ROWS WITH 10" OVERLAP
 30" ROWS – 21 ROWS WITH 20" OVERLAP
 28" ROWS – 23 ROWS WITH 6" OVERLAP
 26" ROWS – 25 ROWS WITH NO OVERLAP
 24" ROWS – 27 ROWS WITH 2" OVERLAP
 22" ROWS – 29 ROWS WITH 12" OVERLAP
 20" ROWS – 32 ROWS WITH 10" OVERLAP

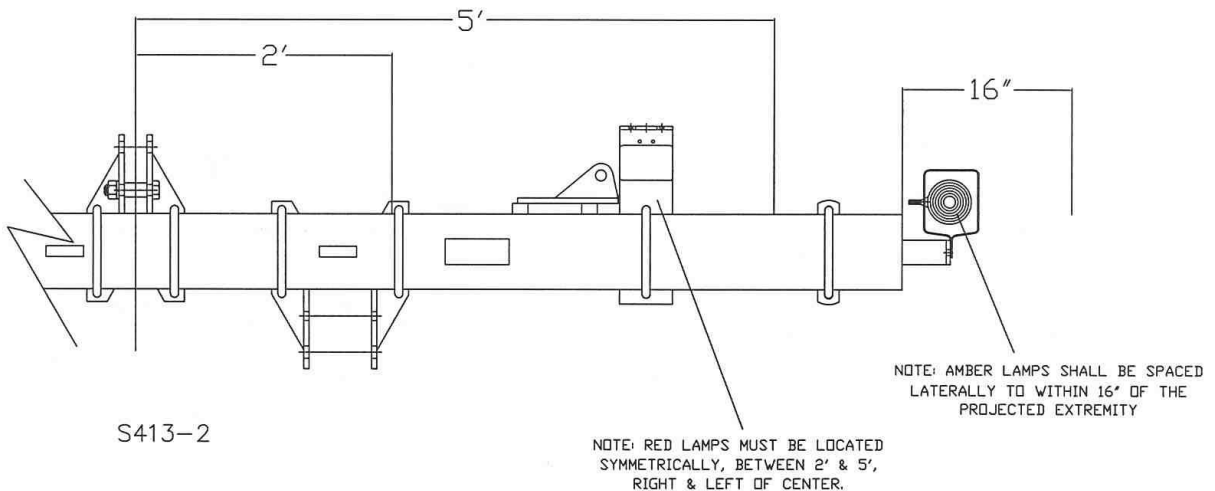
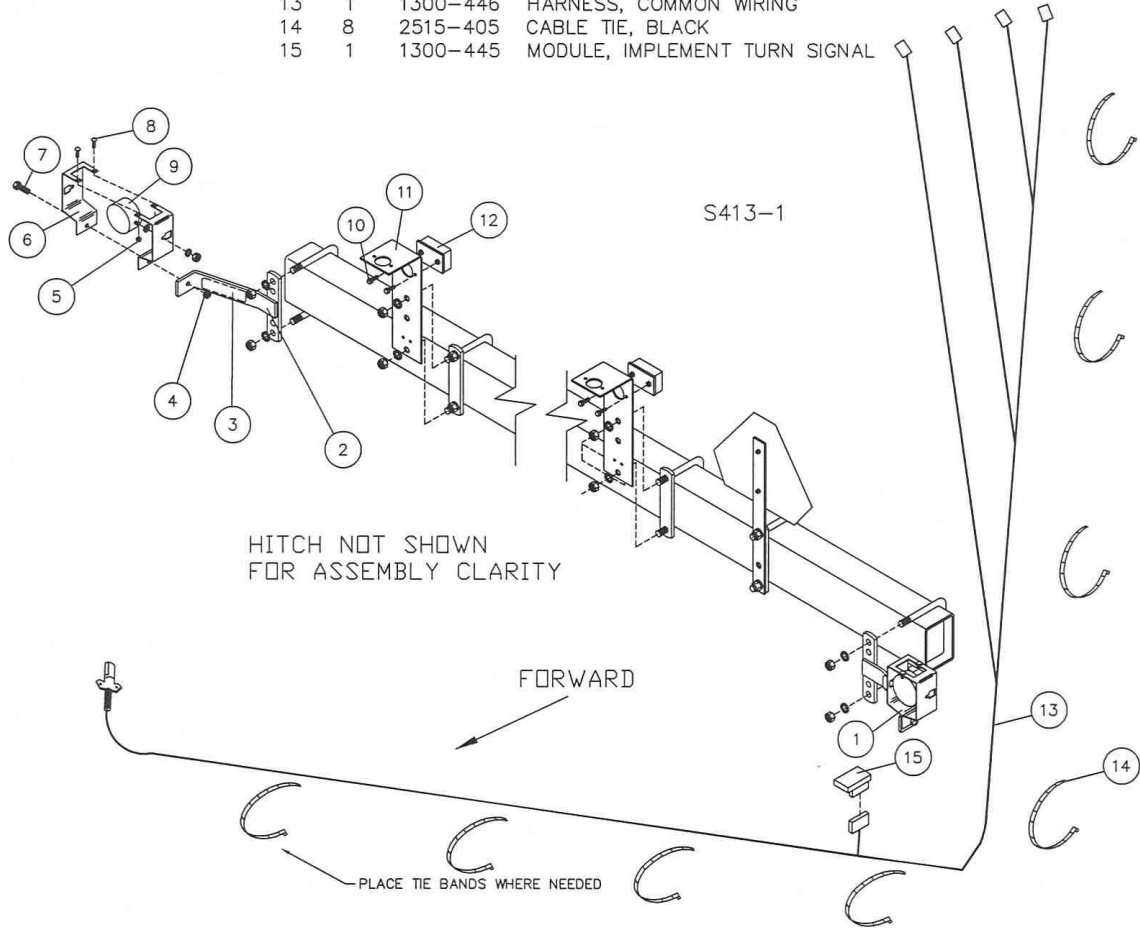
3560-101 60 13 SECTION HOE

42" ROWS – 18 ROWS WITH 6" OVERLAP
 40" ROWS – 18 ROWS WITH 23" OVERLAP
 38" ROWS – 20 ROWS WITH 2" OVERLAP
 36" ROWS – 20 ROWS WITH 21" OVERLAP
 34" ROWS – 22 ROWS WITH 6" OVERLAP
 32" ROWS – 22 ROWS WITH 27" OVERLAP
 30" ROWS – 24 ROWS WITH 18" OVERLAP
 28" ROWS – 26 ROWS WITH 13" OVERLAP
 26" ROWS – 28 ROWS WITH 12" OVERLAP
 24" ROWS – 30 ROWS WITH 15" OVERLAP
 22" ROWS – 34 ROWS WITH 0" OVERLAP
 20" ROWS – 36 ROWS WITH 13" OVERLAP

ASSEMBLY AND PARTS IDENTIFICATION

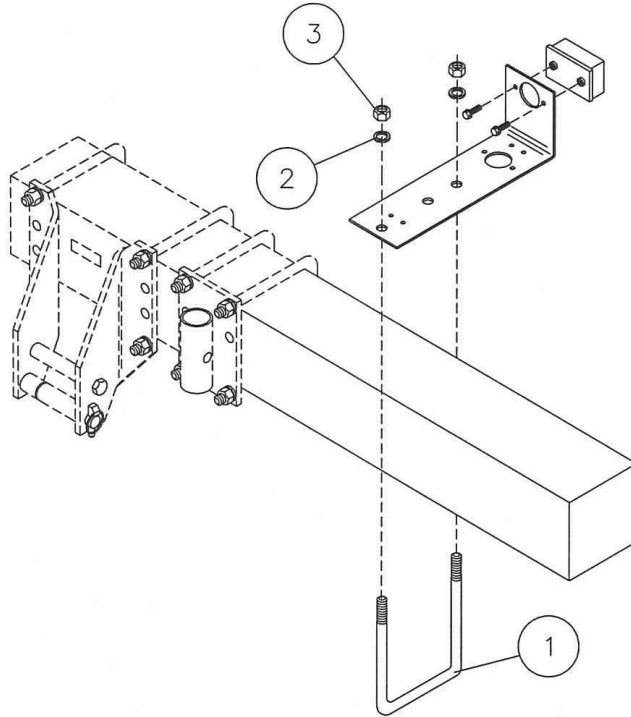
3400-175 - TOOLBAR LIGHT KIT

DET.	QTY.	PART NO.	DESCRIPTION
1	2	1300-137	AMBER LIGHT ASSEMBLY
2	2	3400-227	LIGHT BRACKET W.A., AMBER LAMP
3	2	2565-808	AMBER REFLECTOR, 1.97 X 6.3"
4	1	2520-357	1/2-3 LOCK HEX NUT ZP
5	2	2520-206	5/16-18 FLANGE LOCK NUT
6	2	1300-436	AMBER LIGHT BRACKET
7	1	2502-300	1/2-13 X 1-1/4 HHCS GR. 2 ZP
8	2	2505-205	5/16-18 X 3/4 CAR BLT GR.5
9	1	1300-448	LAMP, AMBER
10	4	2502-195	M8 X 12MM HHCS GR.5 ZP
11	2	3400-359	LIGHT BRACKET, RED LAMP
12	2	1300-447	LAMP, RED
13	1	1300-446	HARNES, COMMON WIRING
14	8	2515-405	CABLE TIE, BLACK
15	1	1300-445	MODULE, IMPLEMENT TURN SIGNAL

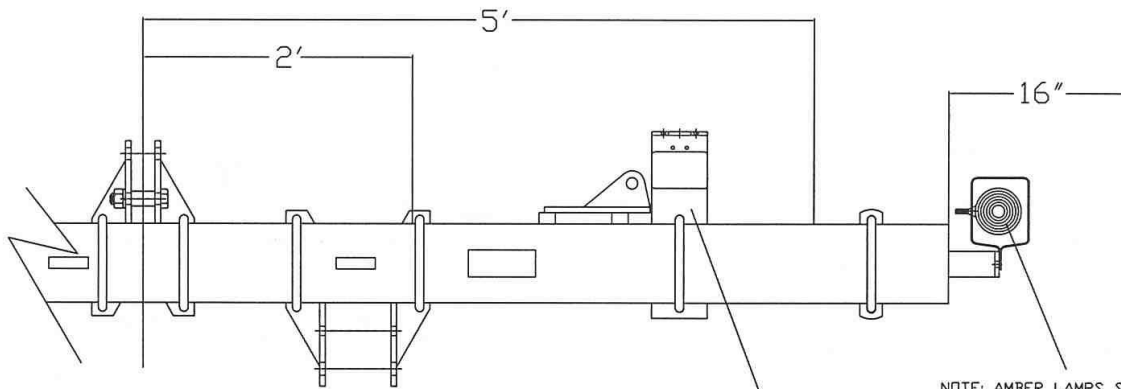


ASSEMBLY AND PARTS IDENTIFICATION 3500-140 3500 TOOLBAR LIGHT KIT

ITEM	PART NO.	DESCRIPTION	QTY
1	2570-478	$\frac{3}{4}$ X 7 X 9 U-BOLT	2
2	2525-501	$\frac{3}{4}$ LOCKWASHER	4
3	2520-504	$\frac{3}{4}$ -10 HEX NUT	4
	3400-175	TOOLBAR LIGHT KIT	1



S413-3



S413-2

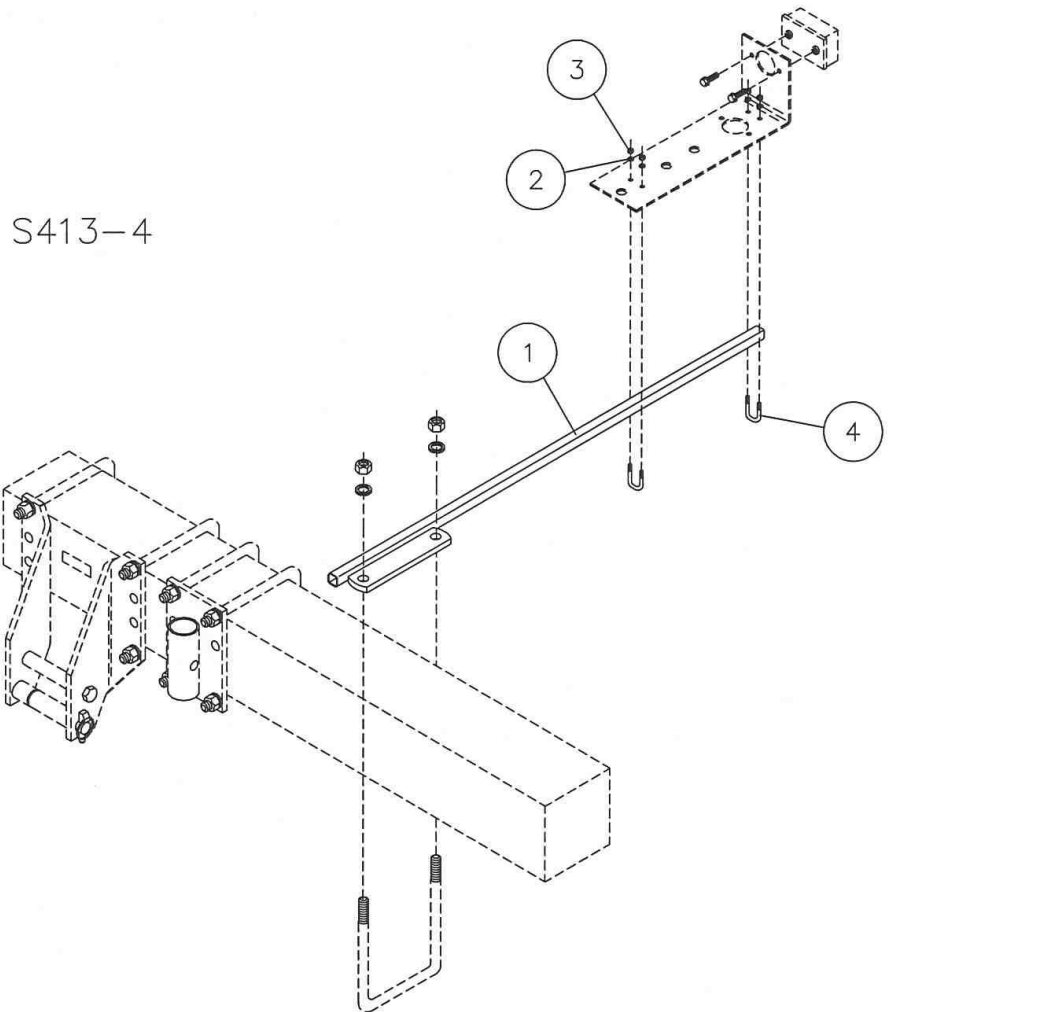
NOTE: RED LAMPS MUST BE LOCATED SYMMETRICALLY, BETWEEN 2' & 5', RIGHT & LEFT OF CENTER.

NOTE: AMBER LAMPS SHALL BE SPACED LATERALLY TO WITHIN 16" OF THE PROJECTED EXTREMITY

ASSEMBLY AND PARTS IDENTIFICATION

3500-141 — MINTILL LAMP EXT. KIT [3500 SERIES ONLY]

KEY	QTY.	PART NO.	DESCRIPTION
1	2	3500-212	LAMP EXT. W.A. [MINTILL]
2	8	2525-151	1/4 MED LOCKWASHER ZP
3	8	2520-151	1/4-20 HEX NUT ZP
4	4	2570-582	1/4 X 1 X 1-3/4 U-BOLT ZP



3500 SERIES HYDRAULIC ASSEMBLY

ASSEMBLE HINGE LEVERS AS FOLLOWS

1. Drive a 3/8" x 2-1/2" roll pin into one end of each of 4 hinge pins.
2. On one wing of hoe assemble 1" washer on hinge pin, push pin thru near hole in hinge, insert hinge lever, push pin thru other hole in hinge, assemble another 1" washer and roll pin.
3. On other end of hinge lever assemble a 1" washer on hinge pin, put thru a wheel, push rod clevis of a hydraulic cylinder, hinge lever, other side of clevis, wheel, washer, and secure with another 3/8" roll pin.
4. On the butt end of cylinder remove 1 hairpin clip and the clevis pin, extend the cylinder and fasten to the cylinder bracket with the clevis pin and the hairpin clip. Check spacing between hinge lever and hinge bushing; (opposite zerk) and set to 1/8" to 3/16" spacing by removing clevis pin and turning cylinder into or out of the rod end clevis. Tighten clevis-clamping bolt.
5. Repeat 2, 3, and 4 for the remaining wing.
6. Lubricate the o-ring on each of the restricted 90-degree fittings and install into the cylinder ports. **DO NOT OVER TIGHTEN AND DISTORT THE METAL BACK-UP WASHER.** Position the fitting by turning it out (counter clockwise) to a maximum of one complete turn and tighten the jam-nut.
7. There are four hose sizes as follows:
 1. 1/4" hose (short) 1 pc.
 2. 1/4" hose (medium) 2 pcs.
 3. 1/4" hose (long) 1 pc.
 4. 3/8" hose, 2 pcs.
8. Connect a short and medium hose on opposite arms of a "T" fitting.
9. Connect a medium and long hose on opposite arms of a second "T".
10. Position the short hose assembly on the toolbar with "T" on the operators left of the hitch assembly, position the long hose assembly in the same manner, connect short hose ends to the inner ports, the longer assembly to outer ports.
11. Connect the 4ft. 3/8" hoses to the remaining "T" ports and tighten **ALL** connections.

Adapters are provided for the hoses to connect to standard 3/4-16 straight thread quick coupler tips such as Case-IH part no. 1285718* or Deere part no. AR945222.

12. Using the cable ties furnished, tie the outer port hoses to the lower ends of each cylinder and the hose to the toolbar on each side of the "T"s and at 2 to 3 foot intervals between.



13. **NOTICE:** Be sure to cycle the hydraulic cylinders **before** attaching them to the folding wings. This removes air from the hoses and insures smooth wing operation.



CAUTION
STAND CLEAR OF FOLDING WINGS!

HYDRAULIC ASSEMBLY

KEY	QTY.	PART NO.	DESCRIPTION
1	2	2515-172	CLEVIS PIN FOR (3X16 & 4X16) CYLINDERS 1" DIA X 3.813" (21'-46')
		3554-303	CLEVIS PIN 5X16 CYL. 1" DIA X 3.938" (54'-60') 10/03-04/13
	2	3554-313	CLEVIS PIN 1.25" X 6.50" (54' & 60' 10/2013 – PRESENT)
2	4	2570-465	7 GA. X 3-3/4 HAIRPIN COTTER ZYD.
3	2	2515-336	3" X 16" ASAE CYLINDER, 1-1/4" ROD DIA.
		2515-336A	3" X 16" ASAE CYLINDER 1-1/2" ROD DIA.
		2515-346	4" X 16" ASAE CYLINDER (3541 & 3546)
		2515-826	5" X 16" SAE-35016 CYLINDER, (54' & 60')
4	8	2530-208	3/8" X 2-1/2" ROLL PIN ZYD.
5	12	2527-564	1" ID X 1-1/2" OD X 14 GA. MACH BUSHING ZYD.
	4	2527-561	1-1/4 ID X 2-1/4 OD X 14 GA. MACH BUSHING ZYD. (54' & 60')
6	4	3500-243	HINGE WHEEL (1" ID X 4-3/8 OD)
	4	3554-204	54' HINGE WHEEL W.A. (54' & 60')(1.25 ID X 4.5 OD)
7	2	3500-226	HEAVY HINGE LEVER W.A. (1" PIVOT HOLES)
	2	3560-200	60' HINGE LEVER W.A. (1.5" AND 1.25" PIVOT HOLES)
	2	3554-205	54 FT. HINGE LEVER W.A. (1" ID BUSHING, 1.25 CYL CLV)
8	4	2520-543	7/8-9 JAM HEX NUT ZYD.
9	4	2502-604	7/8-9 X 3-1/2" THREAD TO HEAD TAP BOLT GR. 2 ZYD.
10	4	3500-308	HINGE PIN (1" D. X 8-3/4 LONG)
	2	3560-301	60' HINGE PIN UPPER (1.25 D. X 9.75 LONG)
10B	2	3554-310	HINGE LEVER PIN UPPER, (54' & 60')(1.25" D. X 8.75" LONG)
10C	2	3560-300	HINGE LEVER PIN LOWER, (54' & 60')(1.5" D. X 8.75" LONG)
11	1	2515-358	HOSE, 1/4" X 50" W/-6 JIC ENDS (3521)
	1	2515-362	HOSE, 1/4" X 75" W/-6 JIC ENDS (3525, 3528 & 3530)
	1	2515-364	HOSE, 1/4" X 90" W/-6 JIC ENDS (3534)
	1	2515-366	HOSE, 1/4" X 110" W/-6 JIC ENDS (3541)
	1	2515-368	HOSE, 1/4" X 145" W/-6 JIC ENDS (3546)
	1	2515-397	HOSE, 1/4" X 160" W/-6 JIC ENDS (3554)
	1	2515-372	HOSE, 1/4" X 200" W/-6 JIC ENDS (3560)
12	2	2515-356	HOSE, 1/4" X 35" W/-6 JIC ENDS (3521)
	2	2515-359	HOSE, 1/4" X 60" W/-6 JIC ENDS (3525)
	2	2515-358	HOSE, 1/4" X 50" W/-6 JIC ENDS (3528)
	2	2515-360	HOSE, 1/4" X 65" W/-6 JIC ENDS (3530)
	2	2515-362	HOSE, 1/4" X 75" W/-6 JIC ENDS (3534)
	2	2515-365	HOSE, 1/4" X 100" W/-6 JIC ENDS (3541)
	2	2515-367	HOSE, 1/4" X 135" W/-6 JIC ENDS (3546)
	2	2515-387	HOSE, 1/4" X 150" W/-6 JIC ENDS (3554)
	2	2515-371	HOSE, 1/4" X 180" W/-6 JIC ENDS (3560)
13	12	2515-405	CABLE TIE (3554, 3560)
14	2	2515-326	TEE FITTING, -6/-6/-6 JIC
15	4	2515-330	90 DEG FITTING, 3/4" SAE TO -6 JIC, RESTRICTED
16	1	2515-353	HOSE, 1/4" X 15" W/-6 JIC ENDS (3521)
	1	2515-357	HOSE, 1/4" X 40" W/-6 JIC ENDS (3525)
	1	2515-356	HOSE, 1/4" X 35" W/-6 JIC ENDS (3528 & 3530)
	1	2515-358	HOSE, 1/4" X 50" W/-6 JIC ENDS (3534)
	1	2515-360	HOSE, 1/4" X 65" W/-6 JIC ENDS (3541)
	1	2515-365	HOSE, 1/4" X 100" W/-6 JIC ENDS (3546)
	1	2515-366	HOSE, 1/4" X 110" W/-6 JIC ENDS (3554)
	1	2515-367	HOSE, 1/4" X 135" W/-6 JIC ENDS (3560)
17	2	2515-386	HOSE, 3/8" X 50" W/-6 JIC ENDS
18	2	2515-327	ADAPTER, 3/4 SAE TO -6 JIC
19	4	1000-361	13/16" UPPER SLEEVE, ZP. (54 FT. ONLY)
20	4	2515-827	REDUCER, (3554 & 3560)
3 X 16 SEAL KIT		ROCKFORD/HYDRO-LINE/MONARCH	2515-338 (2500 PSI)
		COMMAND	2515-128 (BLACK & YELLOW PISTON SEAL)
		MONARCH 1-1/4" ROD	2515-050 (3000 PSI)
		MONARCH 1-1/2" ROD	-----
		PRINCE 1-1/8" ROD	2515-338
		PRINCE 1-1/4" ROD	2515-265
4 X 16 SEAL KIT		ROCKFORD/HYDRO-LINE	2515-468
		COMMAND	2515-144
		MONARCH	2515-054 (3000 PSI)
5 X 16 SEAL KIT		PRINCE	2515-829

HYDRAULIC ASSEMBLY

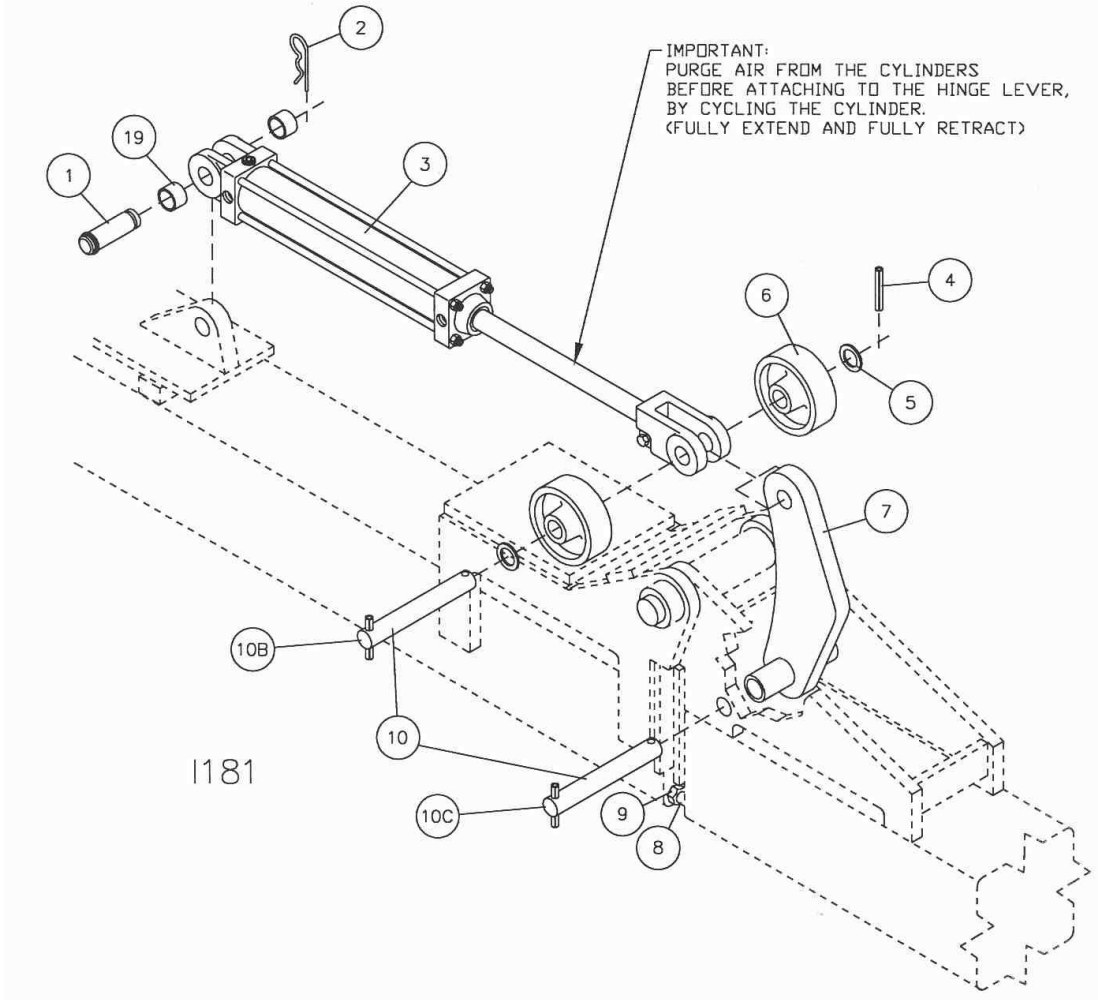
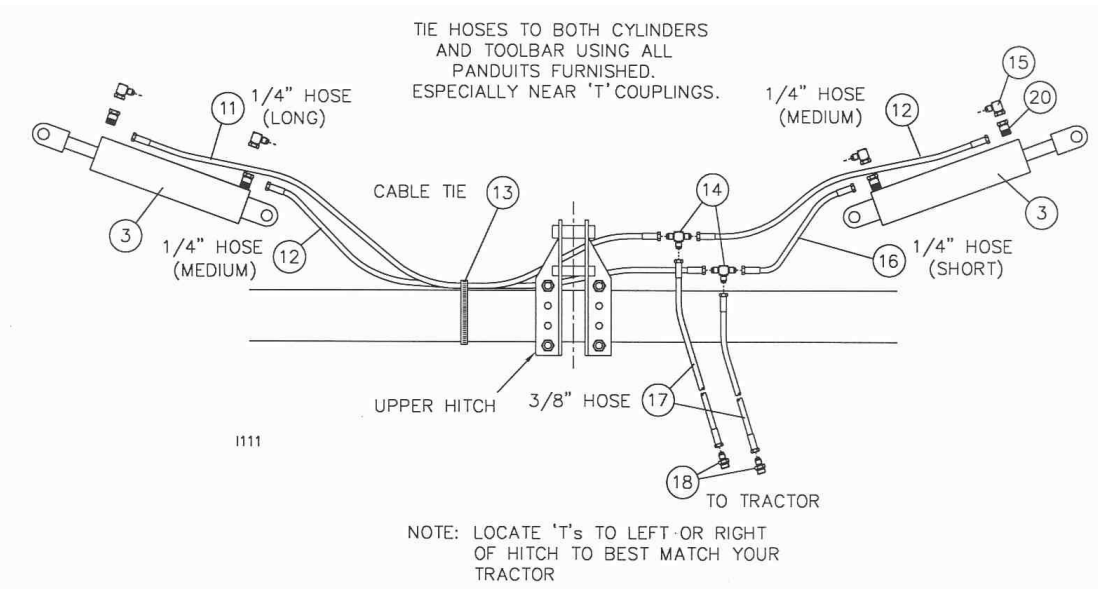


FIGURE 1



ASSEMBLY

SCREEN ASSEMBLY

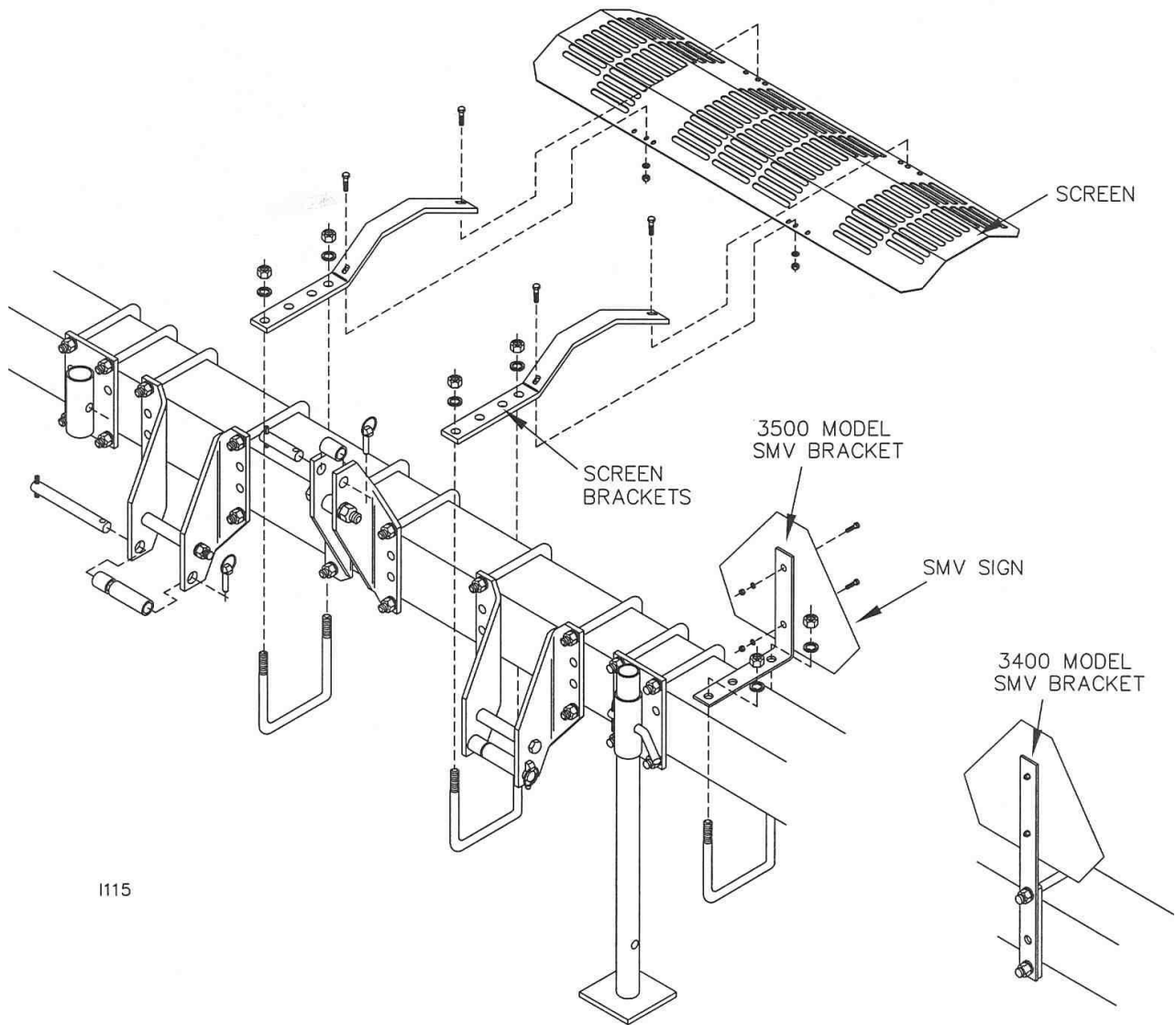
1. Assemble the screen brackets to the screen with four 3/8 x 1" bolts, lock washers, and nuts.
2. Mount the screen assembly to the main frame as shown with two u-bolts, lock washers, and nuts. Additional screens can be ordered if desired.



CAUTION: DO NOT OPERATE ROTARY HOE UNLESS SCREEN IS SECURED AND PROPERLY INSTALLED.

SMV ASSEMBLY

1. Mount SMV emblem as shown with point of triangle up as near operators left of center as possible. Face so emblem is visible from rear of equipment.



1115

ASSEMBLY

GAUGE WHEELS

Frame gauge wheels maintain the rotary hoe frame at a constant level in respect to the ground contour, which helps insure uniform penetration of the hoe wheels.

Mount the frame gauge wheels as shown, location each wheel an equal distance from the center of the main frame. Gauge wheels should run outside the tractor wheel tracks.

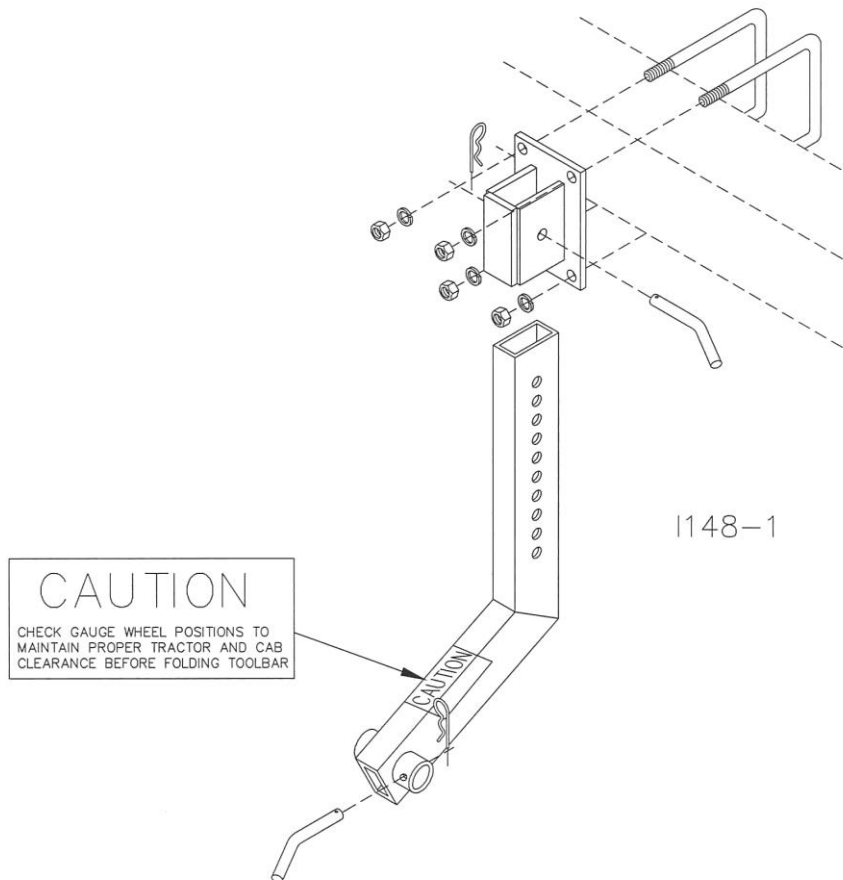
To tighten wheel bearing, remove the hubcap and cotter pin. Tighten the slotted nut until there is a slight drag on the bearing, while turning the wheel. Then loosen or back off the slotted nut one slot and insert the cotter pin. There should be a slight drag on the bearing following adjustment. Reinstall the hubcap.



CAUTION: ON 3500 MODELS, BEFORE ACTIVATING FOLDING HINGE CHECK FOR OBSTRUCTIONS, ESPECIALLY CHECK GAUGE WHEEL POSITIONS TO BE SURE THAT GAUGE WHEELS ARE SET TO CLEAR TRACTOR AND OPERATOR.



CAUTION: CLEAR ALL PERSONNEL FROM AREA BEFORE FOLDING OR UN-FOLDING TOOLBAR.



OPERATION

ROTARY HOE PREPARATION

BOLTS AND NUTS:

Before starting to work, check all nuts and bolts for tightness.

HOE WHEELS:

Check all hoe wheels for straightness. Replace if necessary.

NOTE: ¼" of "RUNOUT" is acceptable.

LUBRICATION:

The basic Rotary Hoe requires no lubrication. If your hoe is equipped with gauge wheels, repack the wheel bearings once a year with multi purpose lithium base grease. Hinges on folding hoes should be greased regularly.

TRACTOR PREPARATION

WHEEL SPACING:

Set the tractor wheels for the desired row spacing so the wheels are centered between the rows. The distance from center of tractor to the center of the tire should be the same on each side. Refer to your tractor operator's manual for correct inflation and ballast information of the tractor.

SWAY BLOCKS:

Place the sway blocks in the wide setting during transport to prevent any swaying of the hoe.

DRAWBAR POSITION:

Place the drawbar in the short, center position to provide maximum clearance between rear of drawbar and rotary hoe.

LIFT LINKS:

Adjust the length of lift links to maximum length. Refer to Tractor Operator's Manual. Keep an adequate distance between the tractor tires and rotary hoe toolbar. If your hoe is equipped with gauge wheels, adjust the lift link pins to allow lateral float. If gauge wheels are not used, adjust prevent any lateral float movement.

ATTACHING ROTARY HOE TO TRACTOR

HITCH ASSEMBLY

The rotary hoe is shipped with mast and hitch pin bushings assembled for CAT III or IV hitches. Remove bushings as required of your tractor.

Place sleeves and spacers in position to fit your hitch. The lower hitch plates are adjustable to fit your tractor's spacing.



CAUTION: BEFORE ATTACHING ROTARY HOE TO TRACTOR, BE SURE HITCH PINS ARE COMPLETELY ASSEMBLED TO MATCH YOUR TRACTOR HITCH.

TRACTOR WITHOUT QUICK COUPLER:

Attach rotary hoe to tractor with draft links to lower hitches.

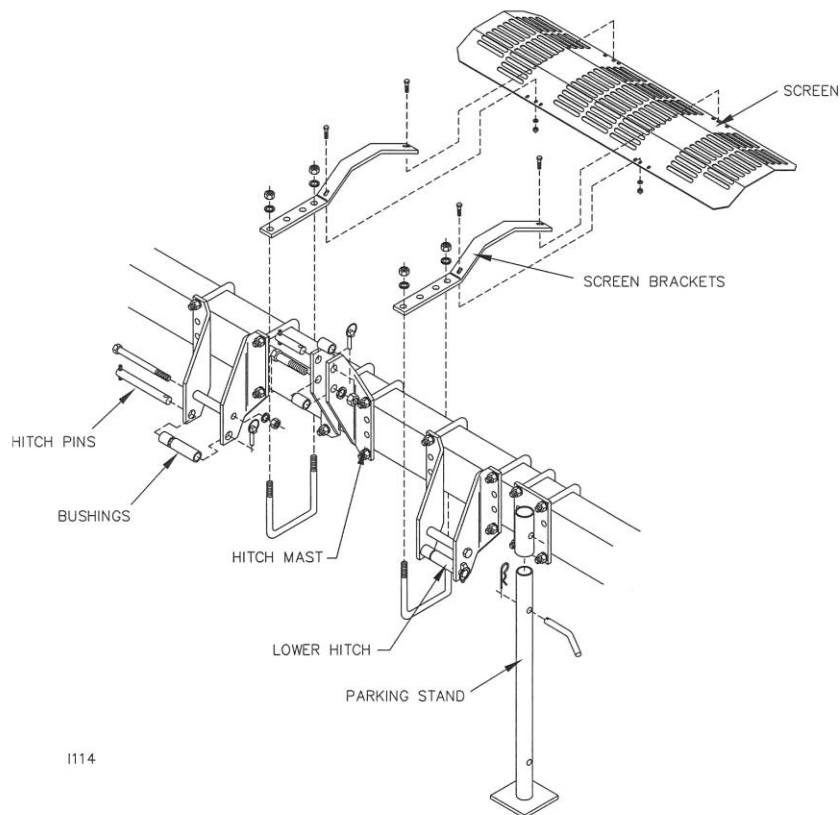
Adjust the center link or extend the draft links to make hookup easier. Raise parking stand and place in upper position.

TRACTOR WITH QUICK COUPLER:

Lower the 3-point hitch so the upper jaw of the Quick Coupler passes under the spacer between the hoe mast plates. This allows lower jaws to pass under the hoe hitch pins. Back tractor up until coupler jaws are under their respective pins and raise hitch.



CAUTION: MAKE CERTAIN THAT CENTER LINK AND QUICK COUPLER ARE LOCKED AND LOCK PINS ARE PROPERLY INSTALLED BEFORE MOVING ROTARY HOE.



FIELD OPERATION

PRE-OPERATION CHECK LIST:

Use this checklist each time you operate the hoe in the field. It will help you obtain satisfactory field operation quickly.

1. Tractor sway blocks in upper position.
2. Center link adjusted for level frame in field operation.
3. Tractor lift links set in lateral float.
4. Tractor rockshaft control lever set in "zero"
5. Check hoe for loose or missing parts. Tighten hardware where necessary.
6. Bent hoe teeth straightened or replaced.
7. Hitch pins fastened and correct spacers used.
8. Quick couplers locked.
9. Adequate ballast added to front of tractor.

**IMPORTANT: NEVER BACK UP WITH ROTARY HOE IN THE GROUND.
NEVER TURN WITH THE HOE IN ITS DOWN POSITION.**

OPERATING SPEED:

An operating speed of 5 to 8 mph will normally provide the best results. Higher speeds tend to increase the teeth penetration.

MAIN FRAME HEIGHT:

The mainframe height during field operation will normally be about 22 inches to bottom of frame.

Without gauge wheels, set the tractor rockshaft control lever to obtain the desired frame height.

With frame gauge wheels, put the rockshaft control lever all the way forward to lock "it" in the float position, which will enable the frame gauge wheels to maintain the frame at a uniform height from the ground.

LEVELING MAIN FRAME

Adjust lift links and center link as necessary to make hoe level and perpendicular to the ground.

Before activating/folding hinge check for obstructions, especially check gauge wheel positions to ascertain proper tractor and cab clearance.

NOTE: If gauge wheels are to be used, make leveling adjustments after gauge wheels are installed.

FIELD OPERATION

PARKING THE ROTARY HOES

3400 HOES

Lower the parking stand. Lower rotary hoe and loosen center link if necessary. Release the latch levers and quick coupler, or raise center link latch handle and remove hitch pins, then move tractor.

3500 HOES

Fold wings to the down position unless rear parking stand is used. Lower the parking stands. Lower the rotary hoe and loosen center link if necessary. Release the latch levers and quick coupler, or raise center link latch handle and remove hitch pins, then drive tractor away.



CAUTION: NEVER UNHOOK FROM A FOLDED ROTARY HOE UNLESS REAR PARKING STANDS ARE USED.

TRANSPORTING THE HOES

3400 HOES

To change from field to transport position, raise the hoe. Make certain the SMV symbol is in place before transporting. DO NOT exceed 15 mph during transport.

3500 HOES

To change from field to transport position, raise the hoe, and then fold. Make certain there is adequate clearance for the wings to fold without hitting obstructions. Check gauge wheel positions for adequate tractor and cab clearance. Make certain the SMV symbol is in place. DO NOT exceed 15 mph during transport.

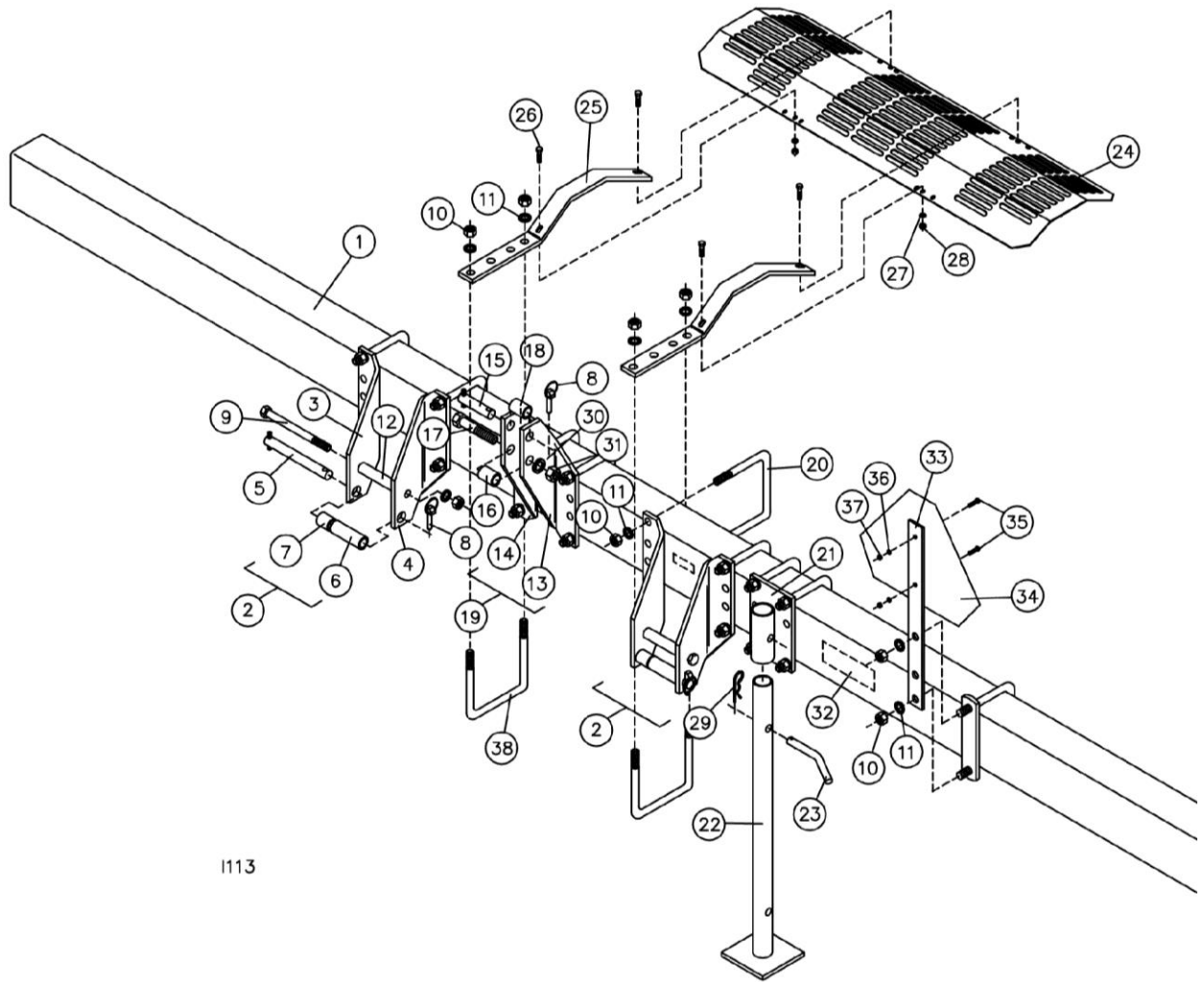


CAUTION: STAND CLEAR OF FOLDING WING!



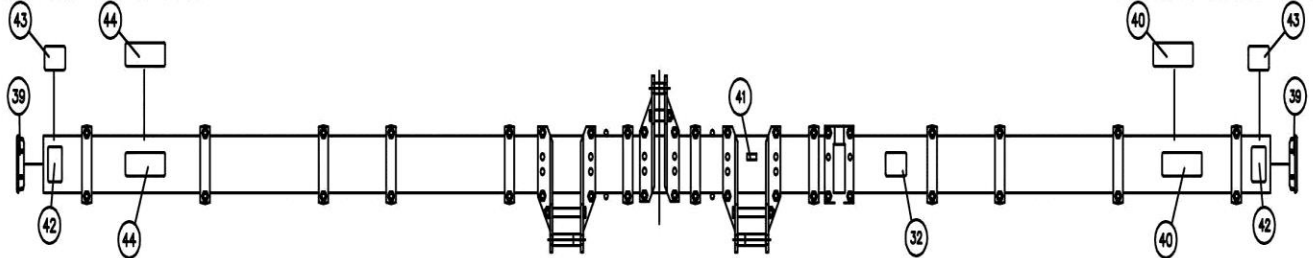
CAUTION: ALWAYS FOLLOW ALL STATE, FEDERAL, AND LOCAL LAWS WHEN TRANSPORTING ROTARY HOE ON PUBLIC ROADS.

PARTS IDENTIFICATION



1113

BACK SIDE OF TUBE BACK SIDE OF TUBE



BACK SIDE OF TUBE BACK SIDE OF TUBE

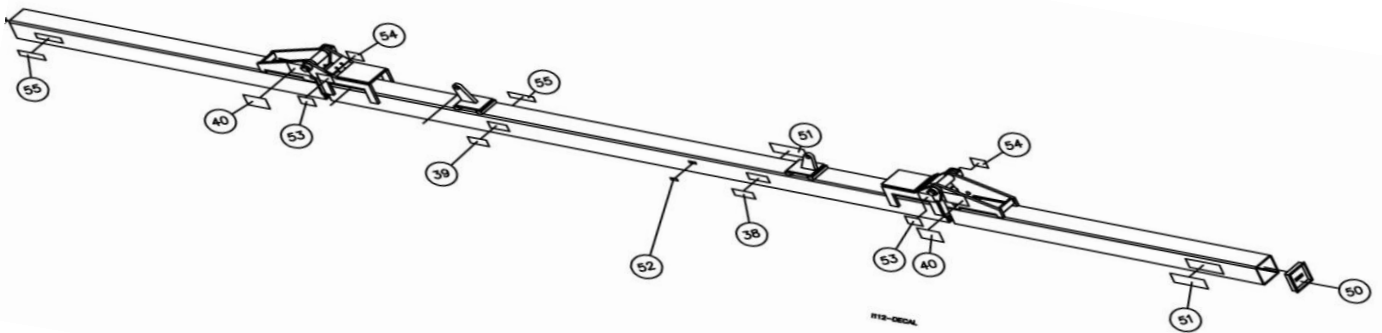
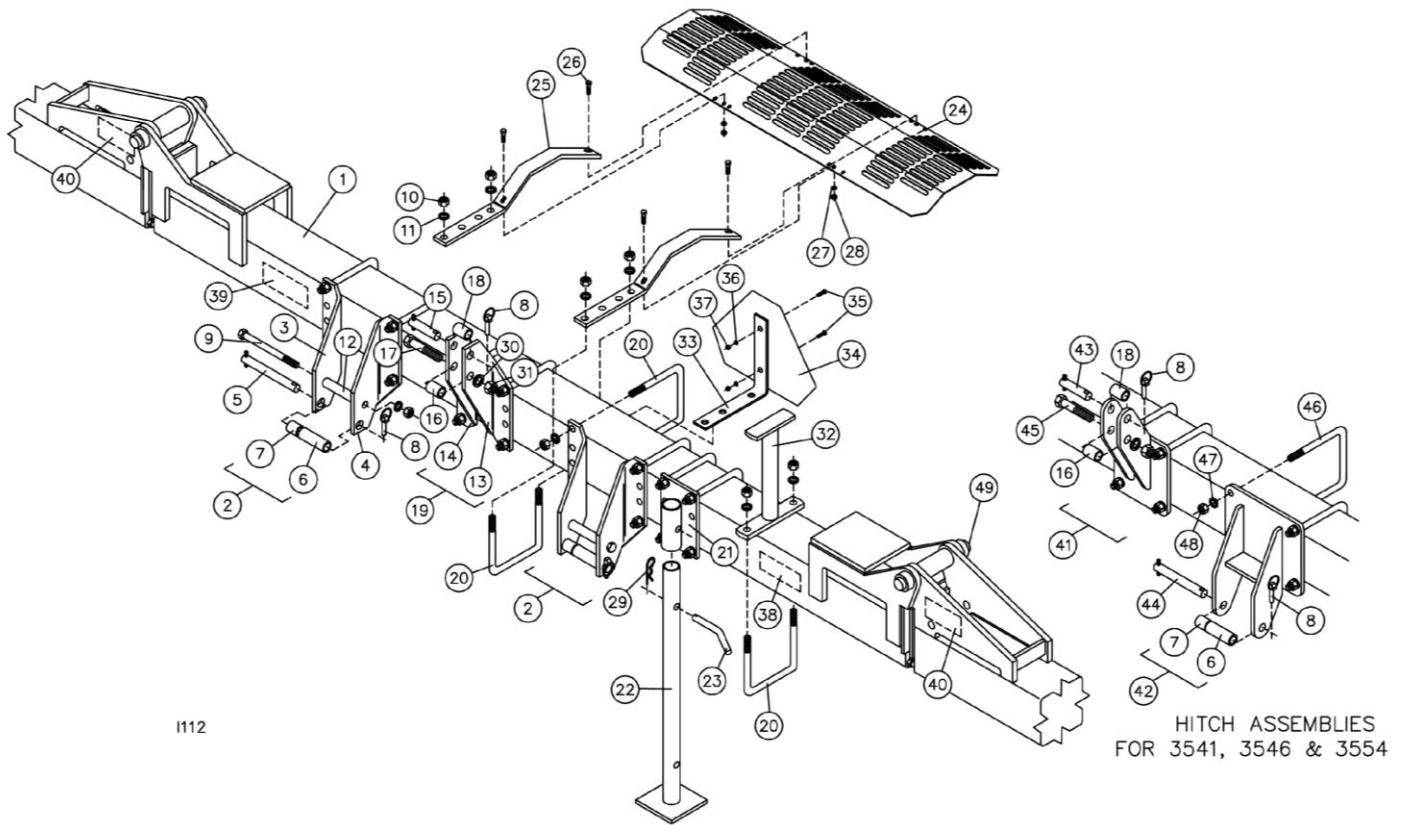
1113-DECAL

PARTS IDENTIFICATION

KEY	QTY.	PART NO.	DESCRIPTION	KEY	QTY.	PART NO.	DESCRIPTION
1	1	3400-401	12' TOOLBAR	21	1	3500-218	STAND BRACKET WA
	1	3400-402	15' TOOLBAR	22	1	3500-217	STAND WA
	1	3400-403	21' TOOLBAR	23	1	3500-333	STAND PIN, ZP.
	1	3400-404	28' TOOLBAR	24	1	3400-395	OSHA SCREEN
	1	3400-405	30' TOOLBAR	25	2	3400-396	SCREEN SUPPORT
	1	3400-406	34' TOOLBAR	26	4	2502-237	3/8-16 X 1 HHCS GR 5 ZP
2	2	3400-115	LOWER HITCH ASSEMBLY (3-4, 9-12)	27	4	2525-251	3/8 MED. LOCKWASHER ZP
3	1	3400-310	LOWER LEFT HITCH PLATE	28	4	2520-251	3/8-16 HEX NUT ZP
4	1	3400-311	LOWER RIGHT HITCH PLATE	29	1	2570-465	7 GA. HAIRPIN COTTER ZP
5	1	3500-123	LOWER HITCH PIN ASS'Y.,H.D. ZP	30	1	2525-550	1" MED. LOCKWASHER ZP
6	1	3400-316	4 1/4" BUSHING ZYD	31	1	2520-555	1-8 HEX NUT ZP
7	1	3400-317	1 1/2" BUSHING ZYD	32	1	2565-067	CAUTION DECAL
8	1	2570-453	KLIK PIN DANUSER #948	33	1	3400-377	STRAIGHT SMV BRACKET
9	1	2502-405	3/4-10 X 8 HHCS GR. 5 ZP	34	1	2570-472	SMV EMBLEM WITH BACKING
10	22	2520-504	3/4-10 HEX NUT ZP	35	2	2502-105	1/4-20 X 3/4 HHCS GR 5 ZP
11	22	2525-501	3/4 MED LOCKWASHER ZP	36	2	2525-151	1/4 MED. LOCKWASHER ZP
12	1	3400-313	LOWER HITCH PIPE	37	2	2520-151	1/4-20 HEX NUT ZP
13	1	3400-308	UPPER LEFT HITCH PLATE	38	2	2570-476	3/4 X 5 X 9 U-BOLT, ZP (21,28,30,34)
14	1	3400-309	UPPER RIGHT HITCH PLATE	39	2	2515-710	END CAP (12' AND 15')
15	1	3400-120	UPPER HITCH PIN ASS'Y.,ZP.		2	2515-708	END CAP (21', 28', 30', 34')
16	1	3400-312	UPPER HITCH PIPE	40	1*	*2565-058	YET FRM EQUI DE 3-7/16X10-5/16
17	1	2502-768	1-8 X 4-1/2 HHCS GR. 5 ZP	41	1	2565-466	SERIAL NUMBER DECAL
18	1	3400-338	UPPER HITCH BUSHING ZYD	42	2	2565-803	AMBER REFLECTOR 2.91 X 4.3
19	1	3400-114	UPPER HITCH ASSEMBLY (REF. S.B. 8, 30, 31, 13-18)	43	2	2565-804	RED REFLECTOR, 2.91 X 4.3
20	10	2570-475	3/4 X 4 X 6 U-BOLT, ZP (12'-15' ONLY)	44	1	2565-085	3412 DECAL
	8	2570-477	3/4 X 7 X 7 U-BOLT, ZP (21', 28', 30', 34 FT)		1	2565-059	3415 DECAL
					2	2565-060	3421 DECAL
					2	2565-061	3428 DECAL
					2	2565-062	3430 DECAL
					2	2565-065	3434 DECAL

*QTY 2 FOR THE 21', 28', 30', 34'

PARTS IDENTIFICATION



PARTS IDENTIFICATION

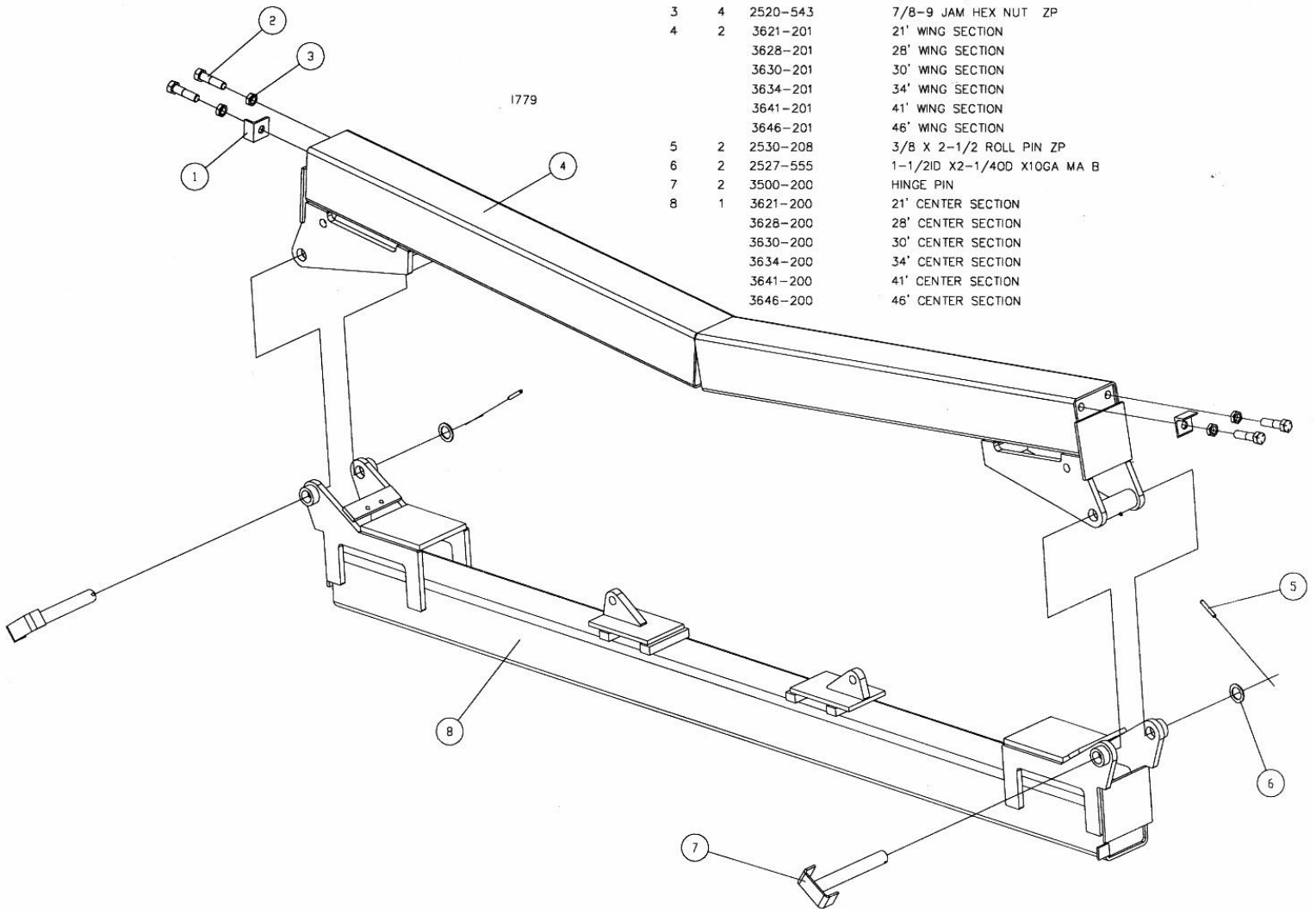
KEY	QTY.	PART NO.	DESCRIPTION	KEY	QTY.	PART NO.	DESCRIPTION
1		3521-104	21' FOLDING HOE TOOLBAR ASSY	28	4	2520-251	3/8-16 HEX NUT ZP
		3528-104	28' FOLDING HOE TOOLBAR ASSY	29	1	2570-465	7 GA. HAIRPIN COTTER ZP
		3530-104	30' FOLDING HOE TOOLBAR ASSY	30	1	2525-550	1" MED. LOCKWASHER ZP
		3534-104	34' FOLDING HOE TOOLBAR ASSY	31	1	2520-555	1-8 HEX NUT ZP
		3541-104	41' FOLDING HOE TOOLBAR ASSY	32	1	3500-208	TOOL BAR STAND WA
		3546-104	46' FOLDING HOE TOOLBAR ASS'Y	33	1	3500-313	SMV BRACKET
2	2	*3400-115	LOWER HITCH ASSEMBLY (3-4, 9-12)	34	1	2570-472	SMV EMBLEM WITH BACKING
3	1	*3400-310	LOWER LEFT HITCH PLATE	35	2	2502-105	1/4-20 X 3/4 HHCS GR 5 ZP
4	1	*3400-311	LOWER RIGHT HITCH PLATE	36	2	2525-151	1/4 MED. LOCKWASHER ZP
5	1	3500-123	LOWER HITCH PIN ASS'Y.,H.D. ZP	37	2	2520-151	1/4-20 HEX NUT ZP
6	1	3400-316	4 1/4" BUSHING ZYD	38	1	2565-164	FOLDING & BACKING DECAL
7	1	3400-317	1 1/2" BUSHING ZYD	39	1	2565-163	PARKING DECAL
8	3	2570-453	KLIK PIN DANUSER #948	40	2	2565-159	FOLDING WING CAUTION DECAL
9	1	*2502-405	3/4-10 X 8 HHCS GR. 5 ZP	NOTE: ITEMS 41 THRU 48 ARE HEAVY DUTY COMPONENTS USED ON			
10	22	**2520-504	3/4-10 HEX NUT ZP	3541 AND 3546			
11	22	**2525-501	3/4 MED LOCKWASHER ZP	41	1	3500-224	UPPER HITCH WELDED ASSEMBLY
12	1	*3400-313	LOWER HITCH PIPE	42	2	3500-223	LOWER HITCH WELDED ASSEMBLY
13	1	*3400-308	UPPER LEFT HITCH PLATE	43	1	3500-124	UPPER HITCH PIN ASS'Y.,H.D.,ZP
14	1	*3400-309	UPPER RIGHT HITCH PLATE	44	2	3500-123	LOWER HITCH PIN ASS'Y.,H.D. ZP
15	1	*3400-120	UPPER HITCH PIN ASS'Y.,ZP.	45	1	2502-770	1-8 X 5 HHCS GR. 5 ZP
16	1	3400-312	UPPER HITCH PIPE	46	6	2570-485	1 X 7 X 9 U-BOLT, ZP
17	1	*2502-768	1-8 X 4-1/2 HHCS GR. 5 ZP	47	13	2525-550	1" MED. LOCKWASHER ZP
18	1	3400-338	UPPER HITCH BUSHING ZYD	48	13	2520-555	1-8 HEX NUT ZP
19	1	*3400-114	UPPER HITCH ASSEMBLY (REF. S.B. 8, 30, 31, 13-18)	49	2	3500-200	HINGE PIN WELD (USED ON 21' - 46')
20	10	***2570-478	3/4 X 7 X 9 U-BOLT, ZP	50	2	2515-707	END CAP
21	1	3500-218	STAND BRACKET WA	51	2	2565-058	YET FRM EQUI DE 3-7/16X10-5/16
22	1	3500-217	STAND WA	52	1	2565-466	SERIAL NUMBER DECAL
23	1	3500-333	STAND PIN, ZP.	53	2	2565-803	AMBER REFLECTOR 2.91 X 4.3
24	1	3400-395	OSHA SCREEN	54	2	2565-804	RED REFLECTOR, 2.91 X 4.3
25	2	3400-396	SCREEN SUPPORT	55	2	2565-072	3521 DECAL
26	4	2502-237	3/8-16 X 1 HHCS GR 5 ZP	2	2	2565-073	3528 DECAL
27	4	2525-251	3/8 MED. LOCKWASHER ZP	2	2	2565-074	3530 DECAL
		*NOT USED ON 3541, 3546		2	2	2565-075	3534 DECAL
		**QTY 14 ON 3541 AND 3546		2	2	2565-136	3541 DECAL
		***QTY 7 ON 3541 AND 3546		2	2	2565-310	3546 DECAL

PARTS IDENTIFICATION

21' -46'

FOLDING TOOLBAR ASSEMBLY

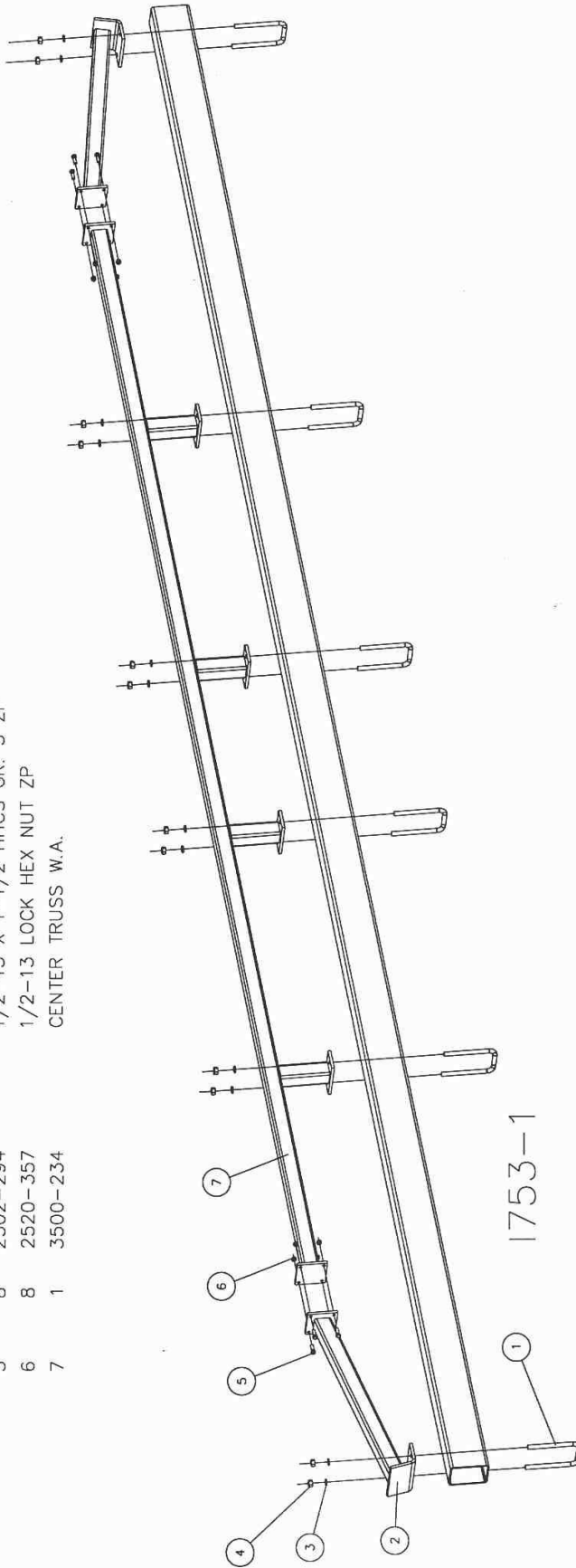
DET	QTY	PART NO.	DESCRIPTION
1	2	3500-358	STOP ANGLE
2	4	2502-604	7/8-9X3-1/2 THD HD TP BLT
3	4	2520-543	7/8-9 JAM HEX NUT ZP
4	2	3621-201	21' WING SECTION
		3628-201	28' WING SECTION
		3630-201	30' WING SECTION
		3634-201	34' WING SECTION
		3641-201	41' WING SECTION
		3646-201	46' WING SECTION
5	2	2530-208	3/8 X 2-1/2 ROLL PIN ZP
6	2	2527-555	1-1/2ID X2-1/4OD X10GA MA B
7	2	3500-200	HINGE PIN
8	1	3621-200	21' CENTER SECTION
		3628-200	28' CENTER SECTION
		3630-200	30' CENTER SECTION
		3634-200	34' CENTER SECTION
		3641-200	41' CENTER SECTION
		3646-200	46' CENTER SECTION



PARTS IDENTIFICATION

3500-001 28' STRAIGHT HOE TRUSS KIT

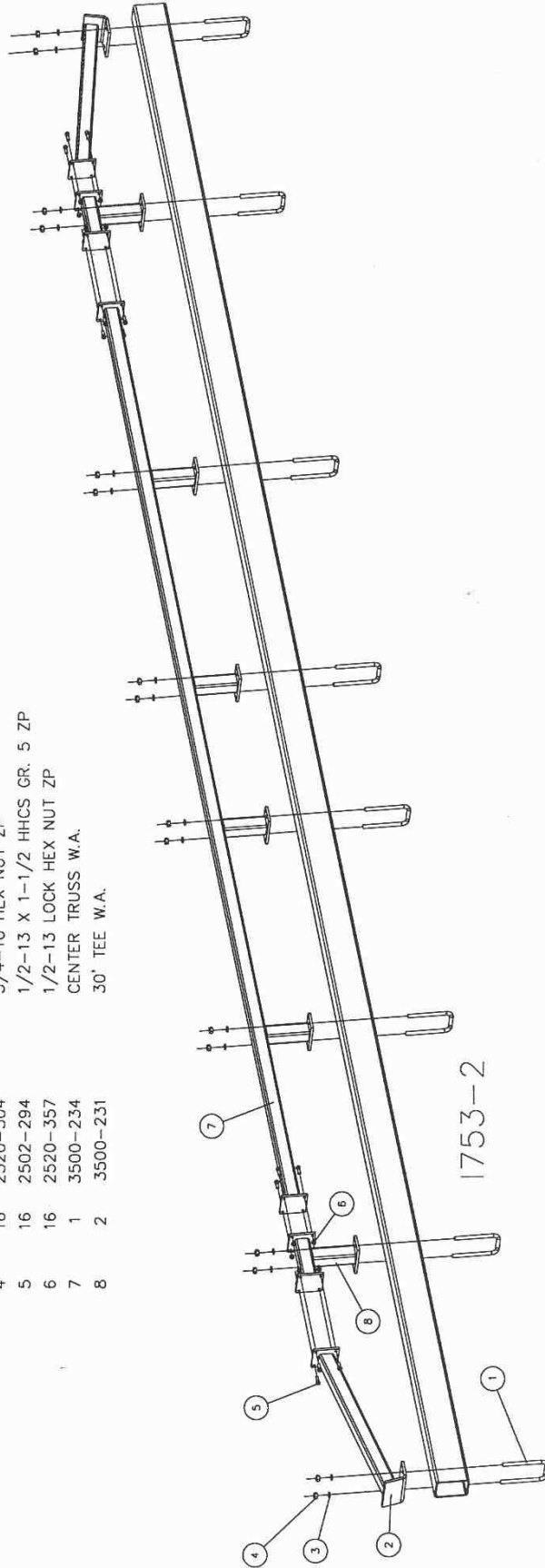
DET	QTY	PART NO.	DESCRIPTION
1	6	2570-476	3/4 X 5 X 9 U-BOLT, ZYD
2	2	3500-233	TRUSS ANCHOR W.A.
3	12	2525-501	3/4 MED LOCKWASHER ZP
4	12	2520-504	3/4-10 HEX NUT ZP
5	8	2502-294	1/2-13 X 1-1/2 HHCS GR. 5 ZP
6	8	2520-357	1/2-13 LOCK HEX NUT ZP
7	1	3500-234	CENTER TRUSS W.A.



PARTS IDENTIFICATION

3500-002 30' STRAIGHT HOE TRUSS KIT

DET	QTY	PART NO.	DESCRIPTION
1	8	2570-476	3/4 X 5 X 9 U-BOLT, ZYD
2	2	3500-233	TRUSS ANCHOR W.A.
3	16	2525-501	3/4 MED LOCKWASHER ZP
4	16	2520-504	3/4-10 HEX NUT ZP
5	16	2502-294	1/2-13 X 1-1/2 HHCS GR. 5 ZP
6	16	2520-357	1/2-13 LOCK HEX NUT ZP
7	1	3500-234	CENTER TRUSS W.A.
8	2	3500-231	30' TEE W.A.

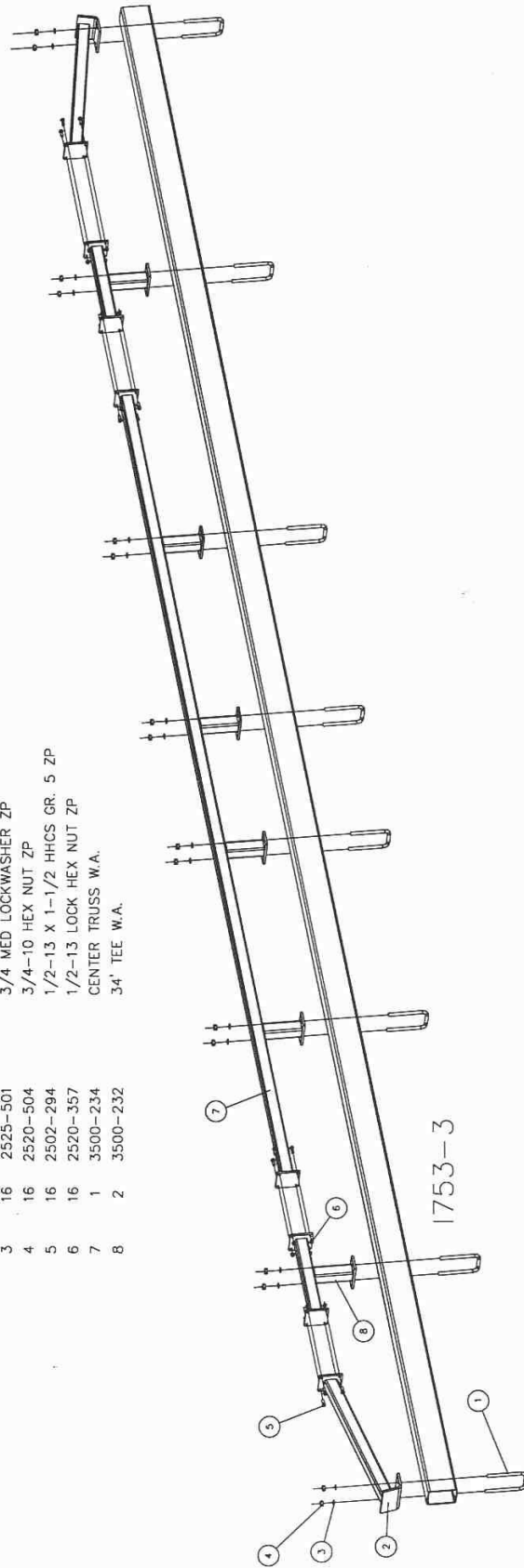


1753-2

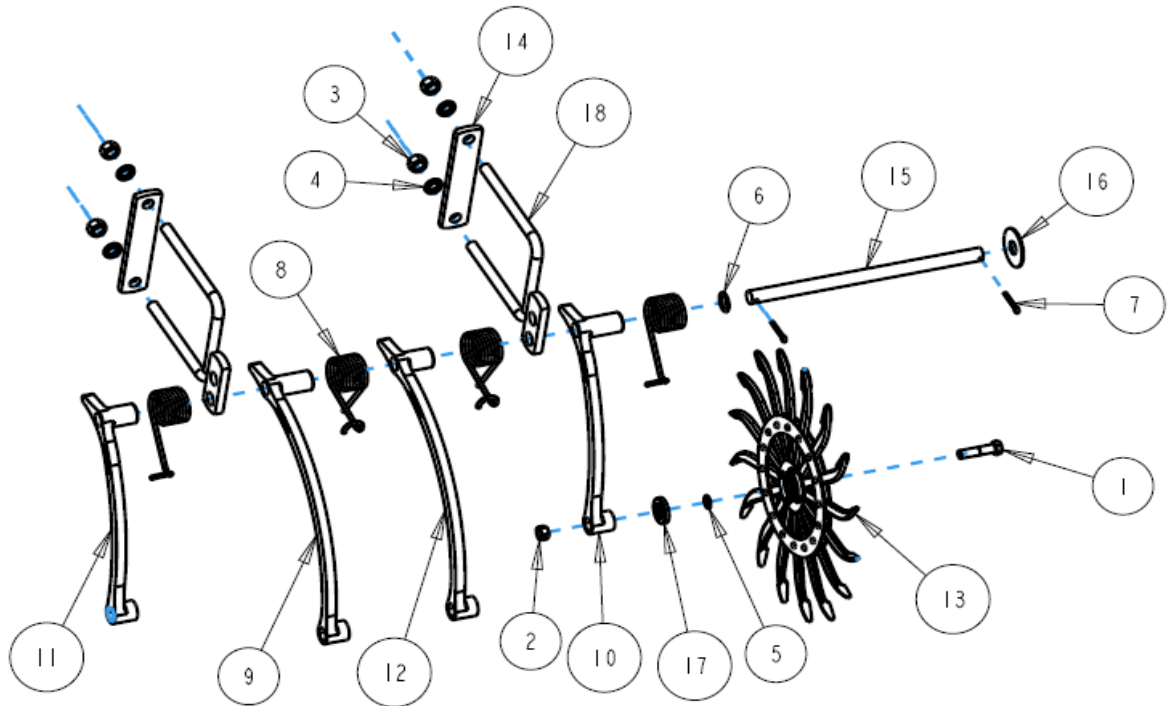
PARTS IDENTIFICATION

3500-003 34' STRAIGHT HOE TRUSS

DET	QTY	PART NO.	DESCRIPTION
1	8	2570-476	3/4 X 5 X 9 U-BOLT, ZYD
2	2	3500-233	TRUSS ANCHOR W.A.
3	16	2525-501	3/4 MED LOCKWASHER ZP
4	16	2520-504	3/4-10 HEX NUT ZP
5	16	2502-294	1/2-13 X 1-1/2 HHCS GR. 5 ZP
6	16	2520-357	1/2-13 LOCK HEX NUT ZP
7	1	3500-234	CENTER TRUSS W.A.
8	2	3500-232	34' TEE W.A.



PARTS IDENTIFICATION

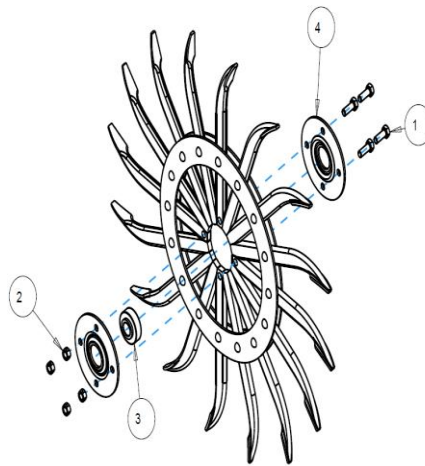


ITEM	PART NO.	DESCRIPTION	QTY
1	2502-323	5/8-11 X 2-3/4 CAP SCREW GRADE 5	N/A
2	2520-459	5/8-11 LOCK HEX NUT	N/A
3	2520-504	3/4-10 HEX NUT	N/A
4	2525-501	3/4 LOCKWASHER	N/A
5	2527-563	5/8 ID X 1 OD X 14 GAUGE SHIM	N/A
6	2527-564	1 ID X 1-1/2 OD X 14 GAUGE SHIM	N/A
7	2531-125	1/4 X 1-3/4 COTTER PIN	N/A
8	2550-716	SPRING	N/A
9	2555-116	LONG HUB REAR ARM	N/A
10	2555-117	LONG HUB FRONT ARM	N/A
11	2555-118	SHORT HUB FRONT ARM	N/A
12	2555-119	SHORT HUB REAR ARM	N/A
13	3400-111A	WHEEL ASSEMBLY	N/A
14	3400-320	CONNECTING PLATE 4 X 4	N/A
	3400-323	CONNECTING PLATE 5 X 7, 7 X 7	N/A
15	3400-157	5 WHEEL AXLE 18-1/4"	N/A
	3400-158	12 WHEEL AXLE 41-7/8"	N/A
	3400-159	14 WHEEL AXLE 48-7/8"	N/A
	3400-160	16 WHEEL AXLE 55-7/8"	N/A
	3500-110	8 WHEEL AXLE 27-15/16"	N/A
	3500-111	17 WHEEL AXLE 59-3/8"	N/A
	3500-112	18 WHEEL AXLE 62-7/8"	N/A
16	3400-383	3" OD X 1-1/32 ID X 1/8 WASHER	N/A
17	3400-408	BEARING SHIELD	N/A
18	3400-200	4 X 6 U-BOLT PIVOT	N/A
	3400-201	7 X 7 U-BOLT PIVOT	N/A
	3500-210	7 X 9 U-BOLT PIVOT	N/A

PARTS IDENTIFICATION

SECTION USAGE PER MODEL

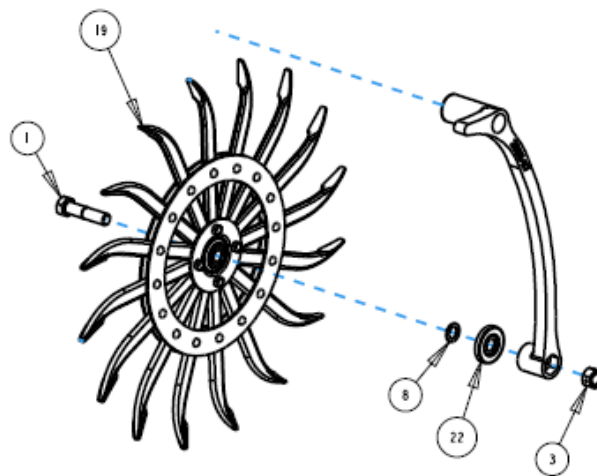
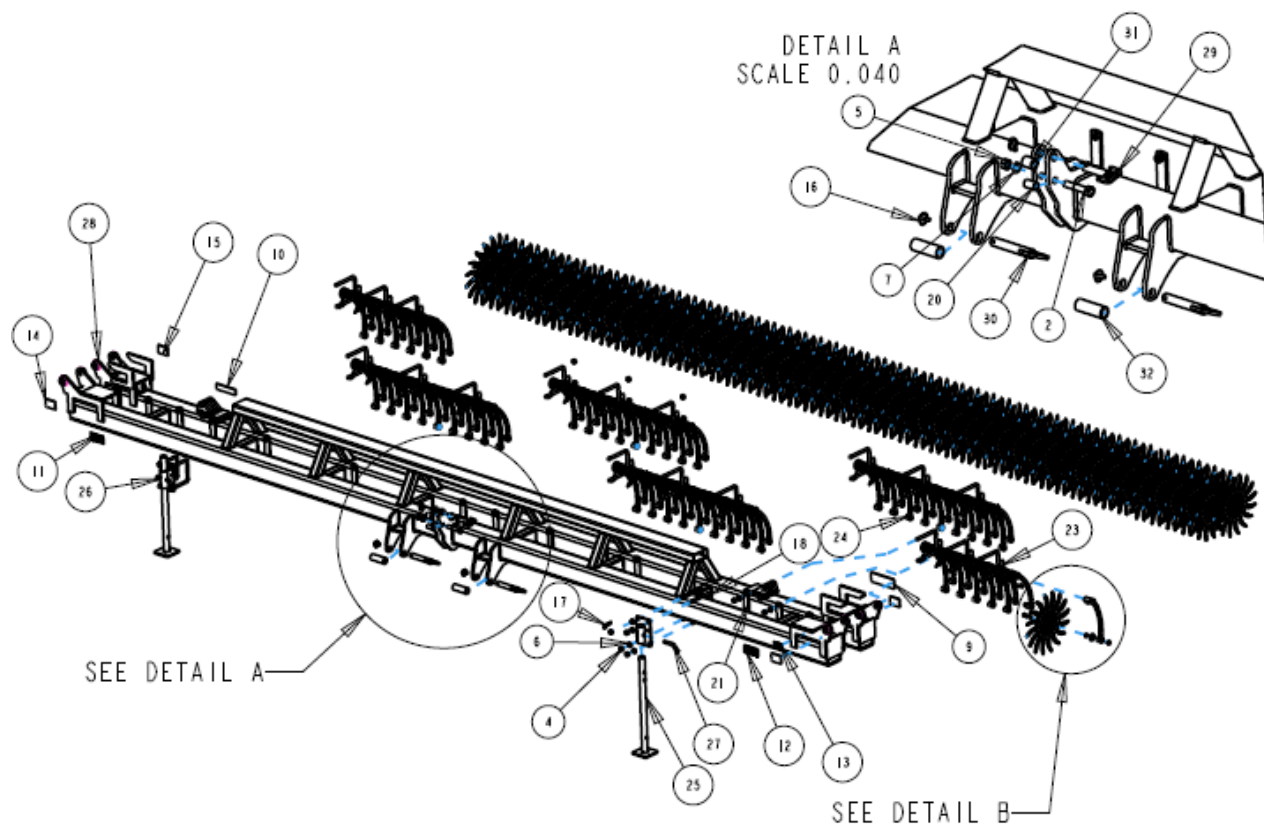
HOE	QTY	PART NO.	NO. WHEELS	HOE	QTY	PART NO.	NO. WHEELS
3412	1	3400-142	18	3546	3	3500-109	18
	2	3400-139	12		1	3500-118	17
3415	2	3400-144	18	3554	1	3500-119	17
	2	3400-146	8		1	3500-120	18
3421	4	3400-145	18	2	3500-103	12	
3428	6	3400-138	16	4	3500-104	14	
3430	4	3400-145	18	3560	4	3500-109	18
	2	3400-138	16		1	3500-118	17
3434	6	3400-140	14	3560	1	3500-119	17
	2	3400-138	16		2	3500-103	12
3521	4	3500-109	18	6	3500-105	16	
3528	2	3500-102	8	3560	2	3500-109	18
	4	3400-139	12		1	3500-118	17
3530	2	3500-105	16	3560	1	3500-119	17
	4	3500-102	8		1	3500-120	18
3534	4	3500-109	18	3560	4	3500-109	18
	4	3500-103	12		4	3500-103	12
3541	2	3500-105	16	3560	2	3500-109	18
	2	3500-109	18		2	3500-120	18
3541	2	3500-120	18	3560	2	3500-109	18
	2	3500-109	18		1	3500-118	17
3541	1	3500-118	17	3560	1	3500-119	12
	1	3500-119	12		2	3500-104	14
3541	2	3500-104	14	3560	2	3500-103	12
	2	3500-103	12				



3400-111A WHEEL ASSEMBLY

ITEM	PART NO.	DESCRIPTION	QTY
1	2602-203	5/16-18 X 7/8 HHCS GR 5 ZP	4
2	2620-204	5/16-18 LOCK HEX NUT, GR B, ZP	4
3	2650-016	R.H. BALL BEARING (AN281357)	1
4	3400-341A	HUB PLATE	2

PARTS IDENTIFICATION 3554-104



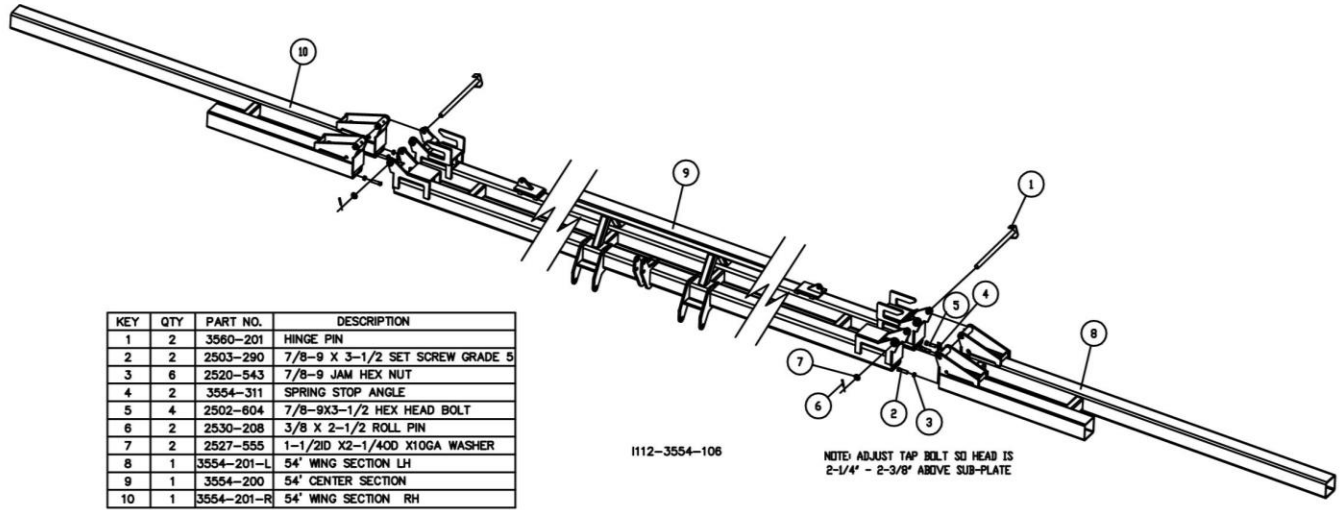
DETAIL B
SCALE 0.125 (C)

ISO3554-104

PARTS IDENTIFICATION 3554-104

ITEM	PART NO.	DESCRIPTION	QTY.
1	2502-323	5/8-11 X 2-3/4 CAP SCREW GRADE 5	96
2	2502-770	1-8 X 5 CAP SCREW GRADE 5	1
3	2520-459	5/8-11 LOCK NUT GRADE 5	96
4	2520-504	3/4-10 HEX NUT	44
5	2520-555	1-8 HEX NUT	1
6	2525-501	3/4 LOCK WASHER	44
7	2525-550	1" LOCK WASHER	1
8	2527-563	5/8 ID X 1 OD X 14 GAUGE SHIM	96
9	2565-058	YETTER DECAL	1
10	2565-076	3554 DECAL	1
11	2565-163	PARKING DECAL	1
12	2565-164	FOLDING & BACKING DECAL	1
13	2565-466	PRODUCT ID PLATE	1
14	2565-803	AMBER REFLECTOR	2
15	2565-804	RED REFLECTOR	2
16	2570-454	KLIK PIN	3
17	2570-465	HAIR PIN COTTER	2
18	2570-478	3/4 X 7 X 9 U-BOLT	4
19	3400-111A	WHEEL ASSEMBLY	96
20	3400-312	UPPER HITCH PIPE	1
21	3400-323	CONNECTING PLATE	18
22	3400-408	BEARING SHIELD	96
23	3500-103	12 WHEEL SECTION ASSEMBLY	2
24	3500-109	18 WHEEL SECTION ASSEMBLY	4
25	3500-217	STAND	2
26	3500-218	STAND BRACKET	2
27	3500-333	STAND PIN	2
28	3554-200	54' CENTER SECTION	1
29	3560-206	UPPER HITCH PIN	1
30	3560-207	LOWER HITCH PIN	2
31	3560-303	UPPER HITCH BUSHING	1
32	3560-304	LOWER HITCH BUSHING-LONG	2

PARTS IDENTIFICATION 3554-106

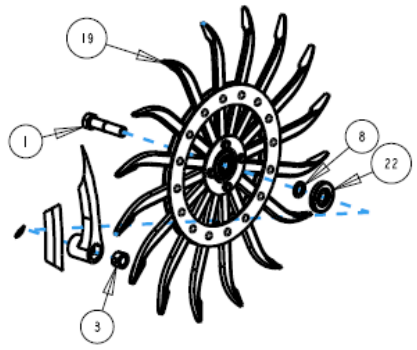
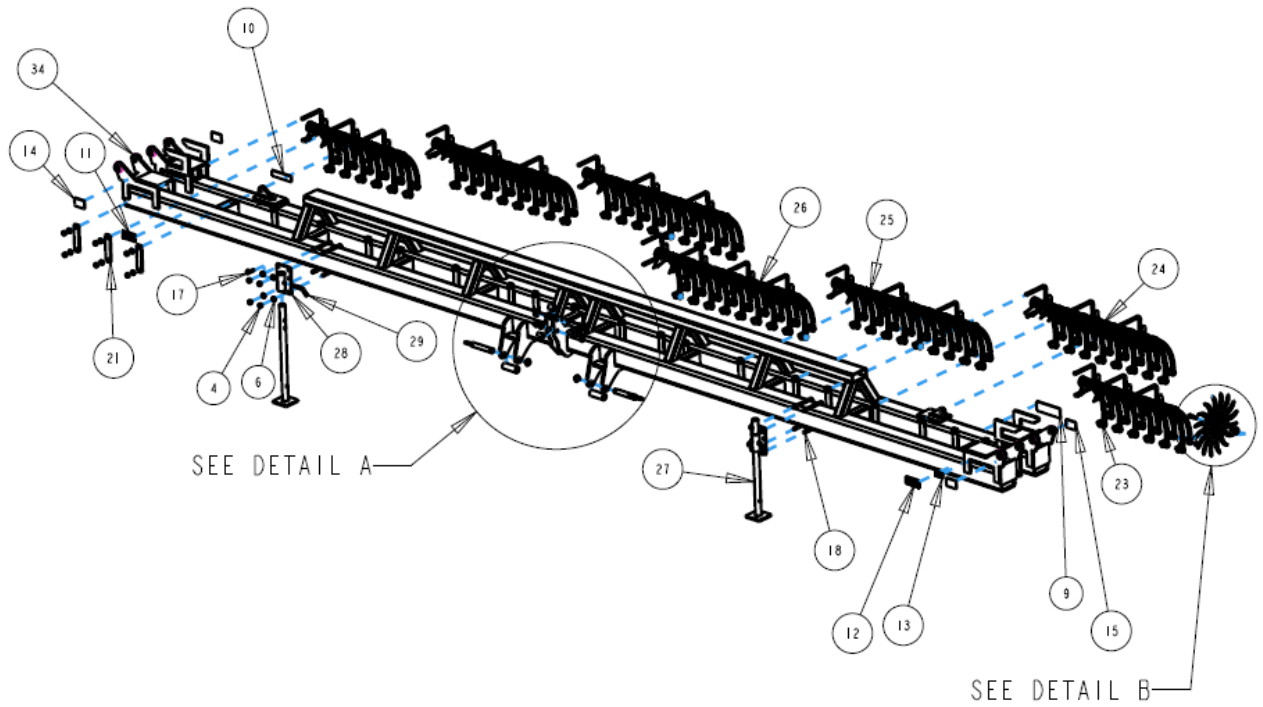


KEY	QTY	PART NO.	DESCRIPTION
1	2	3560-201	HINGE PIN
2	2	2503-290	7/8-9 X 3-1/2 SET SCREW GRADE 5
3	6	2520-543	7/8-9 JAM HEX NUT
4	2	3554-311	SPRING STOP ANGLE
5	4	2502-604	7/8-9X3-1/2 HEX HEAD BOLT
6	2	2530-208	3/8 X 2-1/2 ROLL PIN
7	2	2527-555	1-1/2ID X2-1/4OD X10GA WASHER
8	1	3554-201-L	54' WING SECTION LH
9	1	3554-200	54' CENTER SECTION
10	1	3554-201-R	54' WING SECTION RH

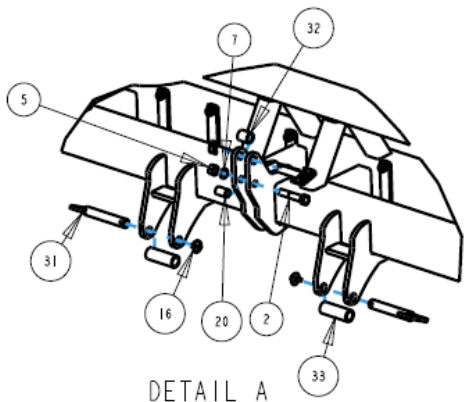
1112-3554-106

NOTE: ADJUST TAP BOLT SO HEAD IS
2-1/4" - 2-3/8" ABOVE SUB-PLATE

PARTS IDENTIFICATION 3560-104



DETAIL B
SCALE 0.100 (C)

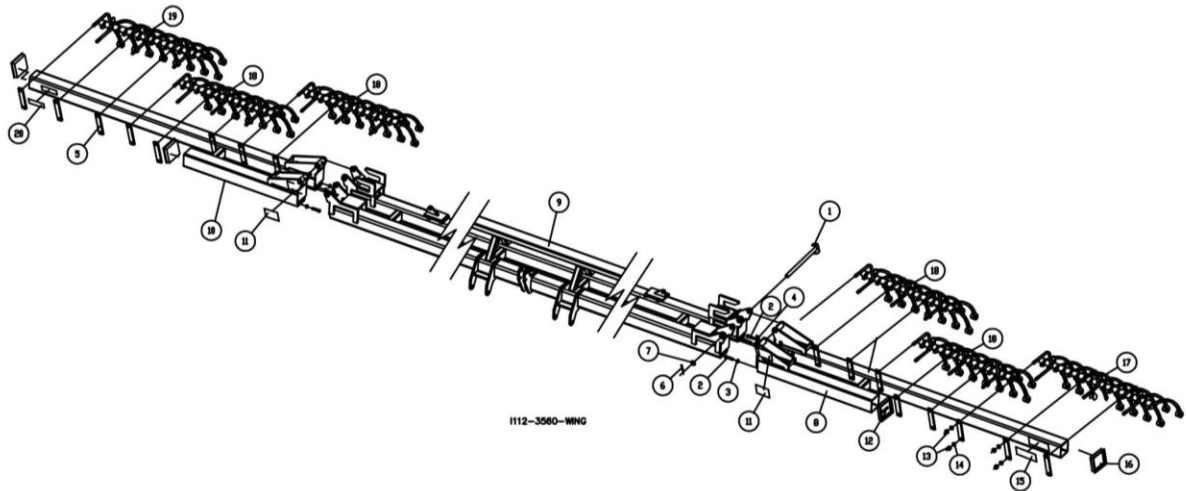


DETAIL A
SCALE 0.040

PARTS IDENTIFICATION 3560-104

ITEM	PART NO.	DESCRIPTION	QTY.
1	2502-323	5/8-11 X 2-3/4 CAP SCREW GRADE 5	110
2	2502-770	1-8 X 5 CAP SCREW GRADE 5	1
3	2520-459	5/8-11 LOCK NUT GRADE 5	110
4	2520-504	3/4-10 HEX NUT	52
5	2520-555	1-8 HEX NUT	1
6	2525-501	3/4 LOCK WASHER	52
7	2525-550	1" LOCK WASHER	1
8	2527-563	5/8 ID X 1 OD X 14 GAUGE SHIM	110
9	2565-058	YETTER DECAL	1
10	2565-078	3560 DECAL	1
11	2565-163	PARKING DECAL	1
12	2565-164	FOLDING & BACKING DECAL	1
13	2565-466	PRODUCT ID PLATE	1
14	2565-803	AMBER REFLECTOR	2
15	2565-804	RED REFLECTOR	2
16	2570-454	KLIK PIN	3
17	2570-465	HAIR PIN COTTER	2
18	2570-478	3/4 X 7 X 9 U-BOLT	4
19	3400-111A	WHEEL ASSEMBLY	110
20	3400-312	UPPER HITCH PIPE	1
21	3400-323	CONNECTING PLATE	22
22	3400-408	BEARING SHIELD	110
23	3500-103	12 WHEEL SECTION ASSEMBLY	2
24	3500-105	16 WHEEL SECTION ASSEMBLY	2
25	3500-109	18 WHEEL SECTION ASSEMBLY	2
26	3500-120	41' 18 WHEEL SECTION ASSEMBLY	1
27	3500-217	STAND	2
28	3500-218	STAND BRACKET	2
29	3500-333	STAND PIN	2
30	3560-206	UPPER HITCH PIN	1
31	3560-207	LOWER HITCH PIN	2
32	3560-303	UPPER HITCH BUSHING	1
33	3560-304	LOWER HITCH BUSHING-LONG	2
34	3660-200	60' DOUBLE FRAME CENTER SECTION	1

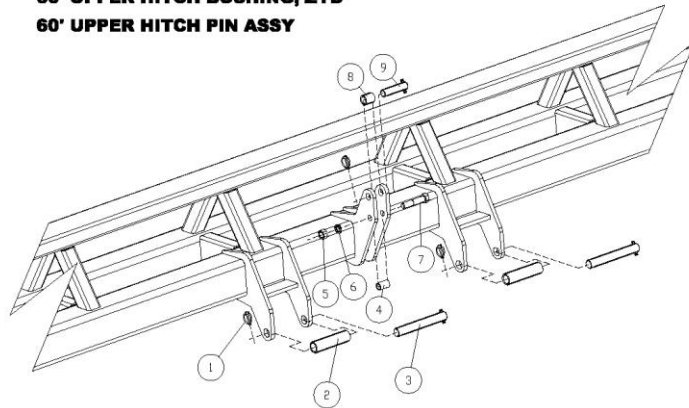
PARTS IDENTIFICATION 3560 WING ASSEMBLY



KEY	QTY	PART NO.	DESCRIPTION
1	2	3560-201	HINGE PIN
2	8	2503-290	7/8-9 X 3-1/2 SET SCREW GRADE 5
3	8	2520-543	7/8-9 JAM HEX NUT
4	2	3554-311	STOP ANGLE
5	18	3400-323	CLAMP PLATE
6	2	2530-208	3/8 X 2-1/2 ROLL PIN
7	2	2527-555	1-1/2ID X2-1/4OD X10GA WASHER
8	1	3660-201	60' WING SECTION LH
9	1	3660-200	60' CENTER SECTION
10	1	3660-202	60' WING SECTION RH
11	2	2565-159	FOLDING WING CAUTION DECAL
12	2	2515-707	END CAP
13	36	2520-504	3/4-10 HEX NUT
14	36	2525-501	3/4 LOCKWASHER
15	1	2565-058	YETTER FARM EQUIPMENT DECAL
16	2	2515-713	END CAP 7X7 3/8 WALL
17	1	3500-119	17 WHEEL SECTION (LONG)
18	4	3500-105	16 WHEEL SECTION
19	1	3500-118	17 WHEEL SECTION (SHORT)
20	1	2565-078	3560 DECAL

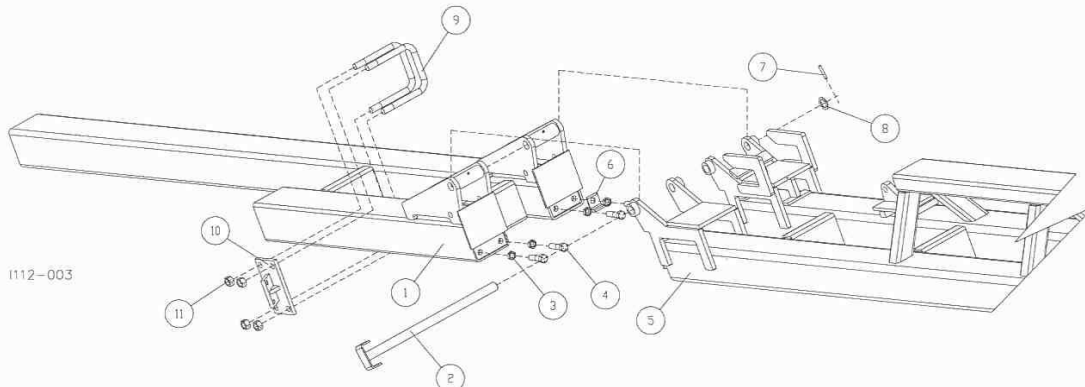
3500 TOOLBAR ASSEMBLY 54' & 60'

DET	QTY	PART NO.	DESCRIPTION
1	3	2570-454	KLIK PIN DANUSER #7524
2	2	3560-304	60' BUSHING (LONG), ZYD
3	2	3560-110	60' LOWER HITCH PIN ASSY
4	1	3400-312	UPPER HITCH PIPE
5	1	2520-555	1-8 HEX NUT ZP
6	1	2525-550	1" MED. LOCKWASHER ZP
7	1	2502-770	1-8 X 5 HHCS GR. 5 ZP
8	1	3560-303	60' UPPER HITCH BUSHING, ZYD
9	1	3560-109	60' UPPER HITCH PIN ASSY



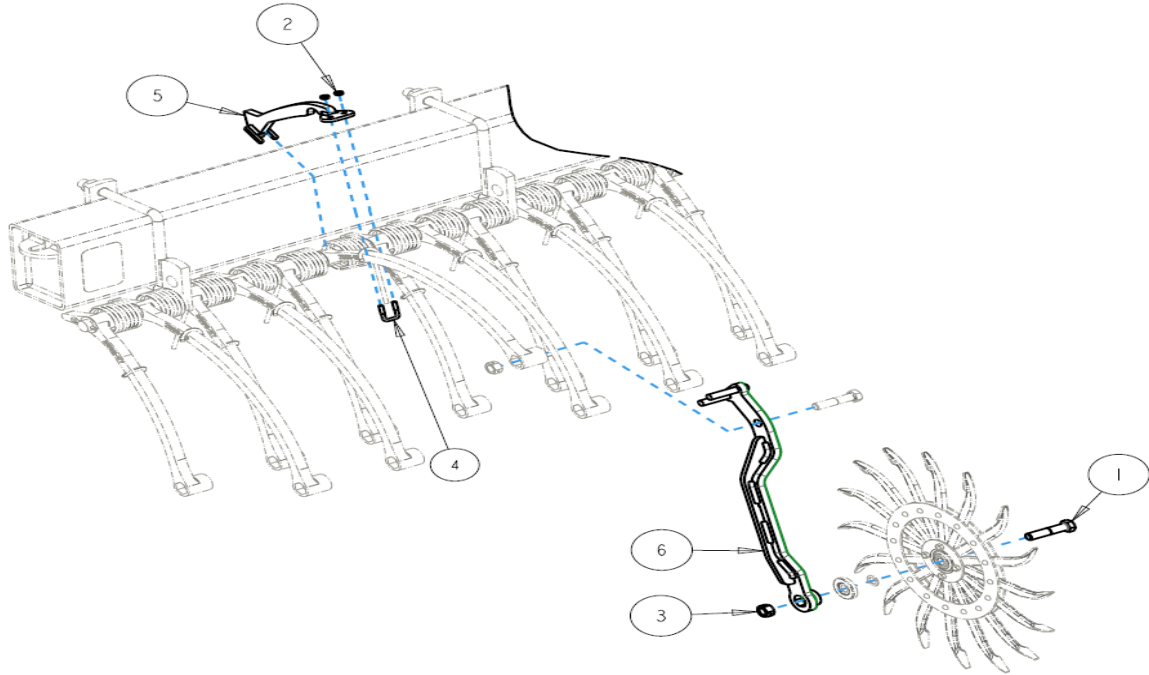
I112-001-3

DET	QTY	PART NO.	DESCRIPTION
1	1	3554-201-R	54' WING SECTION W.A. RH (SHOWN)
	1	3554-201-L	54' WING SECTION W.A. LH
	1	3660-201	60' DBL WING W.A. L.H.
	1	3660-202	60' DBL WING W.A. R.H.
2	2	3560-201	54' HINGE PIN WELD ASSEMBLY
3	8	2520-543	7/8-9 JAM HEX NUT ZP
4	8	2502-604	7/8-9X3-1/2 THD HD TP BLT G
5	1	3554-200	54' CENTER SECTION W.A. (SHOWN)
	1	3660-200	60' DBL CENTER SECTION W.A.
6	1	3554-311	54' ROTARY HOE STOP ANGLE
7	2	2530-208	3/8 X 2-1/2 ROLL PIN ZP
8	2	2527-555	1-1/2ID X2-1/4OD X10GA MA B
9	4	2570-485	1 X 7 X 9 U-BOLT, ZP
10	2	3560-205	CABLE ANCHOR W.A.
11	8	2520-562	1-8 LOCK HEX NUT ZP



I112-003

3400-170A MIN-TILL CONVERSION



ISO3400-170A

ITEM	PART NO.	DESCRIPTION	QTY
1	2502-323	5/8-11 X 2-3/4 CAP SCREW GRADE 5	1
2	2520-152	1/4-20 LOCK HEX NUT	2
3	2520-459	5/8-11 LOCK HEX NUT GRADE 5	1
4	2570-481	U-BOLT	1
5	3400-229	MIN-TILL HOE ARM STOP	1
6	3400-231	MIN-TILL HOE ARM EXTENSION	1

This conversion kit increases the separation of the two rows of rotary hoe wheels improved residue flow through.

1. Attach 3400-229 "stop" to each rear wheel arm with small u-bolt.
2. Remove hoe wheel from existing rear arm.
3. Attach arm extension casting to rear arms with existing wheel bolt and nut.
4. Attach hoe wheel to end to extension casting with bolt and lock nut supplied.



CAUTION: On the 3500 Series Folding Hoes that are being equipped with the Mill-Till Conversion Kit (3400-170), the helper spring kit (3400-172) must be added to the seven min-till arms above the OSHA screen in the folding position. Failure to add helper spring will cause damage to the OSHA screen.

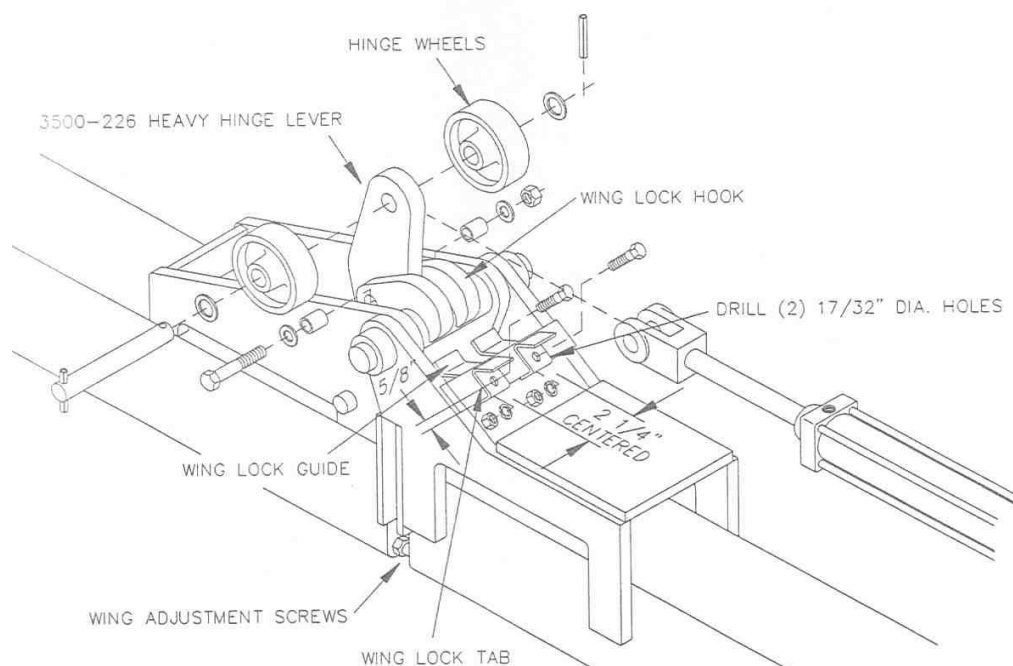
WING LOCK KIT INSTALLATION INSTRUCTIONS

3500-107 Wing Lock Kit is designed to fit Yetter 21', 28', 30', 34', 41', 46' and 54' Rotary Hoe Flat Folding Toolbars.

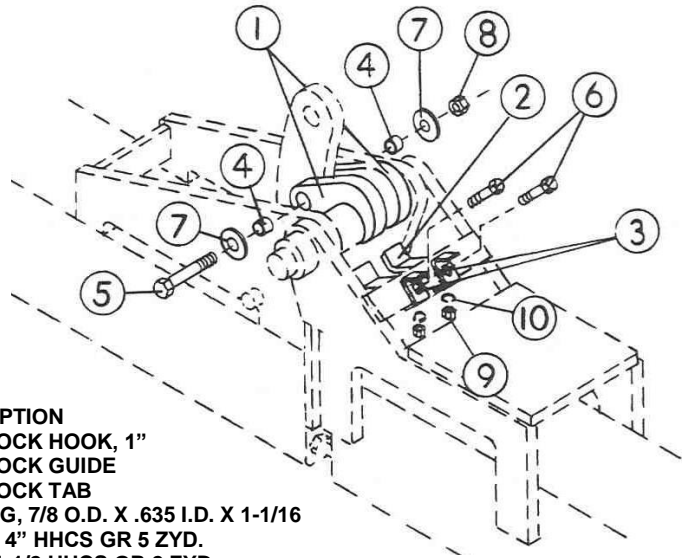
To prevent wings from floating up in certain operating conditions the Yetter Wing Lock Kit will hold the wings in horizontal position when desired. To allow the wings to float, simply retract the wing lift cylinders slightly. This allows complete operator control from the tractor seat to let the wings float up or to lock them down.

INSTALLATION:

1. Remove hinge levers and replace with 4100-205 hinge lever on 41' hoes unless hinge levers have a 21/32" dia. hole added to mount wing lock hooks.
2. Drill (2) 17/32" dia. holes (as shown) in hinge wheel ramp on each side of toolbar. (Holes are in strap after 3/1/82 mfg.)
3. Mount wing lock guides and wing lock tabs (as shown) with 1/2-13 x 1-1/2" hex head cap screws, lock washers, and nuts.
4. Mount wing lock hooks on hinge levers (as shown) using 3500-386 bushing, 5/8-11 x 4" hex head cap screw, flat washers, and lock nut. Be sure hooks pivot freely after bolt is tightened.
5. Level the wings with the lower existing screw adjustment to hold the wings straight with the center section.
6. Cycle cylinders, disconnected from hinge lever, to remove air from hydraulic system before folding wings.
7. Assemble cylinder and hinge wheels as shown.
8. Extend the wing lift cylinders until they bottom out. NOTE: This will cause the wing lock hooks to yield slightly as they are stretched into position.
9. Fold wings a few times slowly while watching the wing lock hooks to be sure they are operating properly.

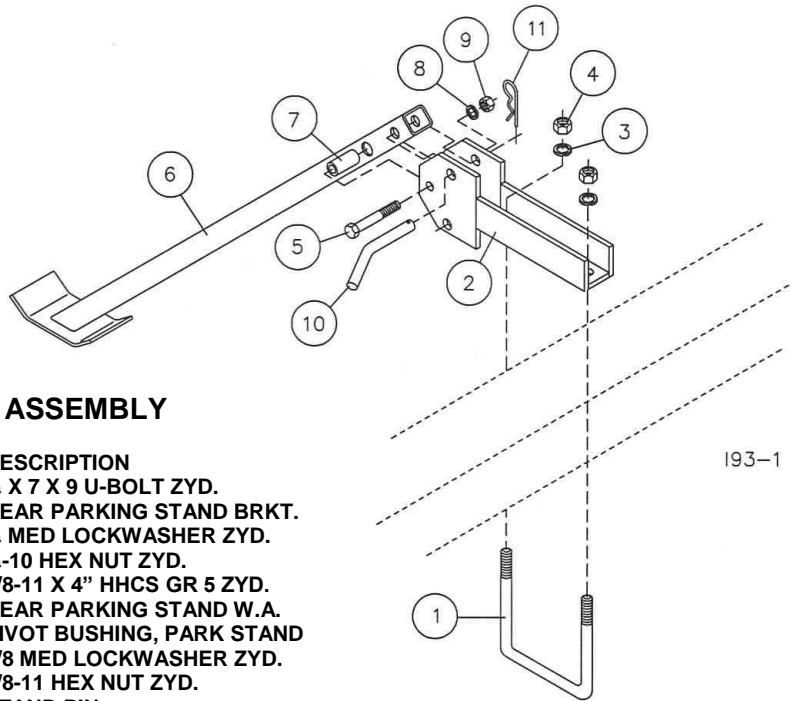


PARTS IDENTIFICATION



3500-107 – WING LOCK KIT

KEY	QTY.	PART NO.	DESCRIPTION
1	4	3500-374	WING LOCK HOOK, 1"
2	4	3500-377	WING LOCK GUIDE
3	4	3500-378	WING LOCK TAB
4	4	3500-386	BUSHING, 7/8 O.D. X .635 I.D. X 1-1/16
5	2	2502-336	5/8-11 X 4" HHCS GR 5 ZYD.
6	4	2502-301	1/2-13 X 1-1/2 HHCS GR 2 ZYD.
7	4	2526-451	5/8 STD FLATWASHER ZYD.
8	2	2520-459	5/8-11 HEX LOCK NUT ZYD.
9	4	2520-352	1/2-13 HEX NUT ZYD.
10	4	2525-352	1/2 MED LOCKWASHER ZYD.

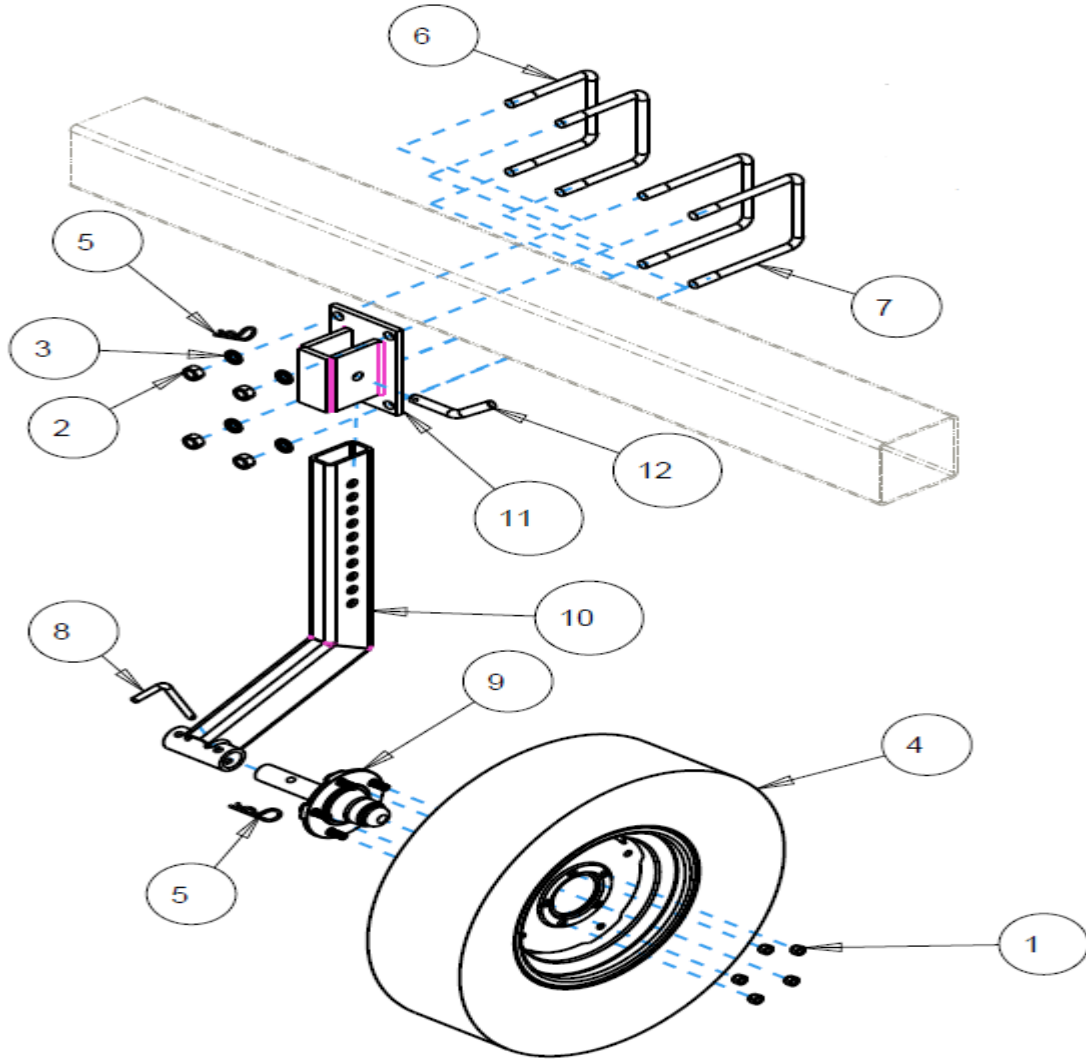


3500-135 – REAR PARKING STAND ASSEMBLY

KEY	QTY.	PART NO.	DESCRIPTION
1	2	2570-478	3/4 X 7 X 9 U-BOLT ZYD.
2	2	3500-229	REAR PARKING STAND BRKT.
3	4	2525-501	3/4 MED LOCKWASHER ZYD.
4	4	2520-504	3/4-10 HEX NUT ZYD.
5	2	2502-336	5/8-11 X 4" HHCS GR 5 ZYD.
6	2	3500-230	REAR PARKING STAND W.A.
7	2	3500-384	PIVOT BUSHING, PARK STAND
8	2	2525-451	5/8 MED LOCKWASHER ZYD.
9	2	2520-452	5/8-11 HEX NUT ZYD.
10	2	3500-333	STAND PIN
11	2	2570-465	7 GA. HAIRPIN COTTER ZYD.

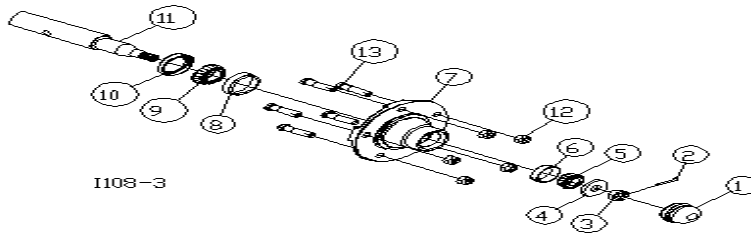
193-1

PARTS IDENTIFICATION 3500-108A



ITEM	PART NO.	DESCRIPTION	QTY
1	2520-360	1/2-20 WHEEL NUT	5
2	2520-504	3/4-10 HEX NUT	4
3	2525-501	3/4 LOCKWASHER	4
4	2570-100	TIRE/WHEEL ASSEMBLY	1
	2570-101	TIRE 7.60-15 IMPLEMENT RIB	1
	2570-323	WHEEL 15X5	1
5	2570-465	HAIRPIN COTTER	2
6	2570-477	3/4 X 7 X 7 U-BOLT	2
7	2570-478	3/4 X 7 X 9 U-BOLT	2
8	2984-320	PIN	1
9	3400-374	HUB/SPINDLE ASSEMBLY	1
10	3500-215	GAUGE WHEEL ARM	1
11	3500-216	MOUNT BRACKET	1
12	3500-333	ADJUSTMENT PIN	1

PARTS IDENTIFICATION



1108-3

3400-374 HUB AND SPINDLE ASSEMBLY

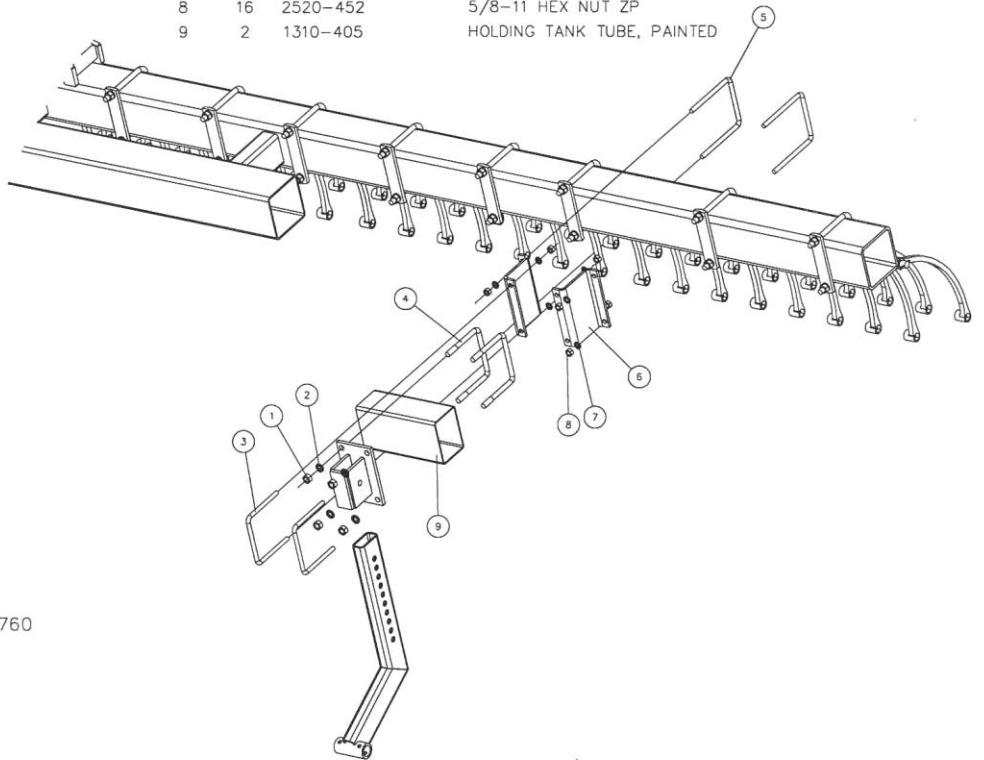
DET	QTY	PART NO.	DESCRIPTION
1	1	2570-308	HUB CAP
2	1	2531-108	5/32 X 1-1/4 COTTER PIN
3	1	2520-469	5/8-18 SLOTTED HEX NUT
4	1	2526-449	5/8 SAE FLATWASHER
5	1	2550-012	CONE <LM-11949>
6	1	2550-013	CUP <LM-11910>
7	1	HUB	4"PILOT 5-1/2" BOLT CIRCLE <NOT A SERVICE PART>
8	1	2550-029	CUP <LM-67010>
9	1	2550-027	CONE <LM-67048>
10	1	2550-115	SEAL <104078>
11	1	3400-378	SPINDLE, 2570-310
12	5	2520-360	1/2-20 WHEEL HEX NUT
13	5	2570-190	1/2-20 X 1.90" HUB BOLT

REVISED 09/09/2020

3560-112

HD HOE GAUGE WHEEL EXT. KIT

DET	QTY	PART NO.	DESCRIPTION
1	8	2520-504	3/4-10 HEX NUT ZP
2	8	2525-501	3/4 MED LOCKWASHER ZP
3	4	2570-735	5/8 X 7 X 7 U-BOLT, ZYD
4	4	2570-477	3/4 X 7 X 7 U-BOLT, ZYD
5	4	2570-626	5/8 X 7 X 9 U-BOLT, ZYD
6	4	2990-336	FRONT BAR EXTENSION, 6-3/8"
7	16	2525-451	5/8 MED LOCKWASHER ZP
8	16	2520-452	5/8-11 HEX NUT ZP
9	2	1310-405	HOLDING TANK TUBE, PAINTED

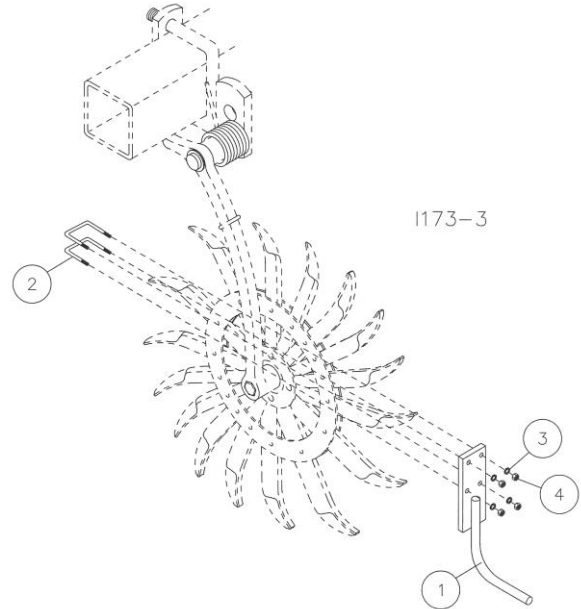


1760

PARTS IDENTIFICATION

INSTALLATION INSTRUCTIONS

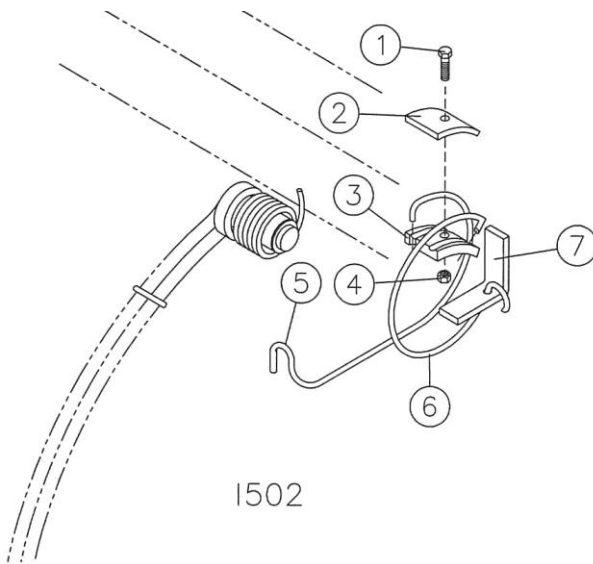
1. Install trash guard to arm casting with trash guard tip towards rear of hoe using ¼ u-bolts, nuts and lock washers as shown. NOTE: Do Not tighten bolts at this time.
2. Set depth of hoe and adjust trash guards. Recommended setting: Tip of trash guard should be 1" to 1-1/2" from ground, depending on field conditions when hoe wheel is penetrating.
3. Tighten all u-bolts after adjusted.
4. The trash guard does not work on the Min-till Arm Extension Kit.



3400-147 – TRASH GUARD ASSEMBLY

KEY	QTY.	PART NO.	DESCRIPTION
1	1	3400-225	TRASH GUARD W.A.
2	2	2570-481	TRASH GUARD U-BOLT
3	4	2525-151	¼ MED LOCKWASHER ZYD.
4	4	2520-151	¼-20 HEX NUT ZYD.

INSTALLATION INSTRUCTIONS



1. Install the torsion spring (#5) and anchor spring (#6) over existing spring and axle. Hook to spring bracket (#7).
2. Assemble the spring clamp casting (#3) and clamp plate (#2) to spring using 5/16 x 1" bolt and nut inserted in clamp casting. Preset lower hook 2" to 3" in front of arm that it is being installed on. Tighten clamp then pull hook up on arm and spring tension is preset.

3400-172 – HELPER SPRING SHIP ASSEMBLY

KEY	QTY.	PART NO.	DESCRIPTION
1	1	2502-198	5/16-18 X 1 HHCS GR 5 ZYD.
2	1	3400-391	CLAMP PLATE
3	1	3400-392	CLAMP
4	1	2520-205	5/16-18 LOCK HEX NUT ZYD.
5	1	3400-393	TORSION SPRING
6	1	3400-394	ANCHOR SPRING
7	1	3400-375	SPRING BRACKET

TROUBLE SHOOTING

Problem	Cause	Solution
Premature bearing failure	Excessive strain on the hoe wheel bearings	<p>Don't turn with rotary hoe wheels on the ground</p> <p>Store the rotary hoe inside to help protect the bearings from freezing weather, moisture, blowing sand, and dirt</p> <p>Keep all wheel bolts tight. Check rotary hoe wheels for loose rivets and bent teeth. Check for bent arm castings</p>
Rotary hoe arm bending or breaking	Excessive strain on the arms and wheels	<p>Don't turn with the rotary hoe wheels on the ground</p> <p>Don't back the rotary hoe with wheels on the ground</p>
3500 Series Wings float up	Air in system	Check for air in hydraulic system and purge system
	Gauge wheels not properly adjusted	Check proper adjustment of wing gauge wheels
	Wing deflection not properly adjusted	Maintain center tool bar height above or parallel with outer wings
	Hinge levers not properly installed	<p>Check assembly of hinge levers</p> <p>Install 3500-107 Wing Lock Kit</p>
Hydraulic cylinders fail to operate properly (3500 model only)	Hydraulic system improperly installed	Check for correct assembly of the hydraulic system
	Air in system	Check for air in the hydraulic system and purge system
	Blocked restrictors	Check restrictors for malfunctions
Rotary hoe wheels plug with trash materials	Excessive trash conditions	<p>Decrease operating depth of hoe wheels and increase ground speed to create momentum so the hoe wheels may clean themselves</p> <p>On softer, mellow soils, decrease operating depth so that hoe wheels do not pickup trash material</p> <p>Install optional Min-Till Conversion Kit, (3412-3434-125)(3541or3546-125)</p> <p>Install optional trash guard (part no. 3400-147)</p>
Hoe wheels won't penetrate	Hard soil conditions	<p>Lower tool bar to maximize aggressiveness of rotary hoe</p> <p>Lengthen center link on tractor to tilt tool bar back to increase spring tension</p> <p>Install optional helper spring (part no. 3400-150)</p>
Rotary hoe wheels are too aggressive	Rotary hoe wheels running too fast	Slow tractor ground speed
	Rotary hoe wheels running too deep	<p>Decrease operating depth of rotary hoe wheels</p> <p>Install toolbar gauge wheels except on model 3412 and 3415</p>

Our name Is getting known

Just a few years ago, Yetter products were sold primarily to the Midwest only. Then we embarked on a program of expansion and moved into the East, the South, the West and now north into Canada. We're even getting orders from as far away as Australia and Africa.

So, when you buy Yetter products . . .you're buying a name that's recognized. A name that's known and respected. A name that's become a part of American agriculture and has become synonymous with quality and satisfaction in the field of conservation tillage.

Thank you.

YETTER MANUFACTURING CO.
Colchester, IL 62326-0358 • 309/776-4111
Toll Free 800/447-5777
Fax 309/776-3222
Website: WWW.YETTERCO.COM
E-MAIL: INFO@YETTERCO.COM

2565-118_REV_W • 02/2025