



## 2965 SERIES RESWEEP

OPERATOR'S MANUAL  
PARTS IDENTIFICATION  
2565-985\_REV\_A 09/2024

2965-028, 2965-028-LA, 2965-040, 2965-052, 2965-053, 2965-057



### YETTER MANUFACTURING CO.

Founded 1930

Colchester, IL 62326

Toll free: (800)447-5777.

Fax: (309)776-3222

Website: [yetterco.com](http://yetterco.com)

E-mail: [info@yetterco.com](mailto:info@yetterco.com)

# YETTER


## FOREWORD


You've just joined an exclusive but rapidly growing club.  
For our part, we want to welcome you to the group and thank you for buying a Yetter product.


We hope your new Yetter products will help you achieve both goals-increase your productivity and increase your efficiency so that you may generate more profit.


This operator's manual has been designed into four major sections: Foreword, Safety Precautions, Installation Instructions and Parts Breakdown.

This **SAFETY ALERT SYMBOL** indicates important safety messages in the manual. When you see this symbol, be alert to the possibility of **PERSONAL INJURY** and carefully read the message that follows.

 **DANGER:** Indicates an imminently hazardous situation which, if not avoided "will" result in death or serious injury. This signal word is to be limited to the most extreme situations

 **WARNING:** Indicates a potentially hazardous situation which, if not avoided, "could" result in death or serious injury.

 **CAUTION:** Indicates a potentially hazardous situation, which if not avoided, "may" result in minor or moderate injury. It may also be used to alert against unsafe practices.

 **NOTICE:** Indicates information considered important, but not hazard related (e.g., messages relating to property damage).

It is the responsibility of the user to read the operator's manual and comply with the safe and correct operating procedure and to lubricate and maintain the product according to the maintenance schedule in the operator's manual.

The user is responsible for inspecting his machine and for having parts repaired or replaced when continued use of the product would cause damage or excessive wear to the other parts.

It is the user's responsibility to deliver his machine to the Yetter dealer who sold him the product for service or replacement of defective parts, which are covered by the warranty policy.

If you are unable to understand or follow the instructions provided in this publication, consult your local Yetter dealer or contact:

### YETTER MANUFACTURING CO.

309/776-4111

800/447-5777

309/776-3222 (FAX)

Website: [www.yetterco.com](http://www.yetterco.com)

E-mail: [info@yetterco.com](mailto:info@yetterco.com)

### WARRANTY POLICY

Yetter Manufacturing warrants all products manufactured and sold by it against defects in material. This warranty being expressly limited to replacement at the factory of such parts or products as will appear to be defective after inspection. This warranty does not obligate the Company to bear cost of labor in replacement of parts. It is the policy of the company to make improvements without incurring obligations to add them to any unit already sold. No warranty is made or authorized to be made, other than herein set forth. This warranty is in effect for one year after purchase.

Dealer : \_\_\_\_\_

**Yetter Manufacturing warrants its own products only and cannot be responsible for damage to equipment on which mounted.**

## SAFETY PRECAUTIONS

A brief description of signal words that may be used in this manual:

**DANGER**: Indicates an imminently hazardous situation which, if not avoided “will” result in death or serious injury. This signal word is to be limited to the most extreme situations.

**WARNING**: Indicates a potentially hazardous situation which, if not avoided, “could” result in death or serious injury.

**CAUTION**: Indicates a potentially hazardous situation, which if not avoided, “may” result in minor or moderate injury. It may also be used to alert against unsafe practices.

**NOTICE**: Indicates information considered important, but not hazard related (e.g., messages relating to property damage).

Consult your implement and tractor operator’s manual for correct and safe operating practices. Be aware of towed implement width and allow safe clearance.

Safety decals are placed on the implement to alert the operator and others to the risk of personal injury or unsafe operation during normal operations and servicing.

1. The safety decals must be kept clean and in good condition to ensure that they are legible.
2. Safety decals must be replaced if they are missing or illegible.
3. When components are replaced during repair or servicing, check that the new components include the necessary safety signs.
4. Replacement safety decals may be obtained from your local dealer.



### **WARNING**

Read these instructions carefully to acquaint yourself with the Equipment. Working with unfamiliar equipment can lead to accidents.

Never park the equipment on a steep incline or leave the equipment running unattended.

Never clean, lubricate or adjust a machine that is in motion.

Always check that straps are secure.

Make sure latches are in pinned position when moving equipment.

Do not allow children to operate this equipment.

Do not allow riders on the equipment, trailer and/or pick-up.

Use speed and caution dictated by the terrain being traversed. Do not operate on any slope steep enough to cause tipping or loss of control.

Read and understand the operator’s manual and require all other persons who will operate the equipment to do the same.

If operating on public roadways, where legal, be certain all lighting is operating properly and observe all traffic laws.

Beware of increased stopping distances and control effort when operating with implements attached.

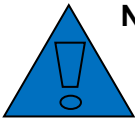
Be familiar with all controls and be prepared to stop equipment quickly in an emergency.

**FAILURE TO HEED MAY RESULT IN PERSONAL INJURY OR DEATH.**

# TABLE OF CONTENTS

**BOLT TORQUE.....2**  
**FOREWORD..... 3**  
**SAFETY..... 4**  
**INSTALLATION.....5-8**  
**OPERATION.....9**  
**PARTS IDENTIFICATION.....10-14**

## BOLT TORQUE



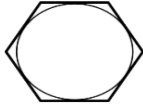



**NOTICE:** Over-tightening hardware can cause just as much damage as under-tightening. Tightening hardware beyond the recommended range can reduce its shock load capacity.

All hardware is either Grade 5 unless otherwise noted. Grade 5 cap screws are marked with three radial lines on the head. Grade 8 cap screws are marked with six radial lines on the head. If hardware must be replaced, be sure to replace it with hardware of equal size, strength and thread type. Refer to the torque values chart when tightening hardware.

The chart below is a guide for proper torque. Use it unless a specified torque is called out elsewhere in the manual. Torque is the force applied to the end of the handle or cheater bar, times the length of the handle or bar. Tightening hardware beyond the recommended range can reduce its shock load capacity.

### Use a torque wrench wherever possible

The following table shows torque in ft.-lbs. for coarse thread hardware.

Bolt Diameter and Threads per Inch	 Grade 2	 Grade 5	 A-325	 Grade 8
1/4	6		10	14
5/16	12		20	30
3/8 – 16	25		35	50
7/16 – 14	35		55	80
1/2 – 13	55		85	125
9/16 – 12	75		125	175
5/8 – 11	105		170	235
3/4-10	185		305	425
7/8 – 9	170		445	690
1-8	260		670	1030
1 1/8 – 7	365		900	1460
1 1/4 - 7	515		1275	2060
1 3/8 – 6	675		1675	2700
1 1/2 - 6	900		2150	3500
1 3/4 – 5	1410		3500	5600

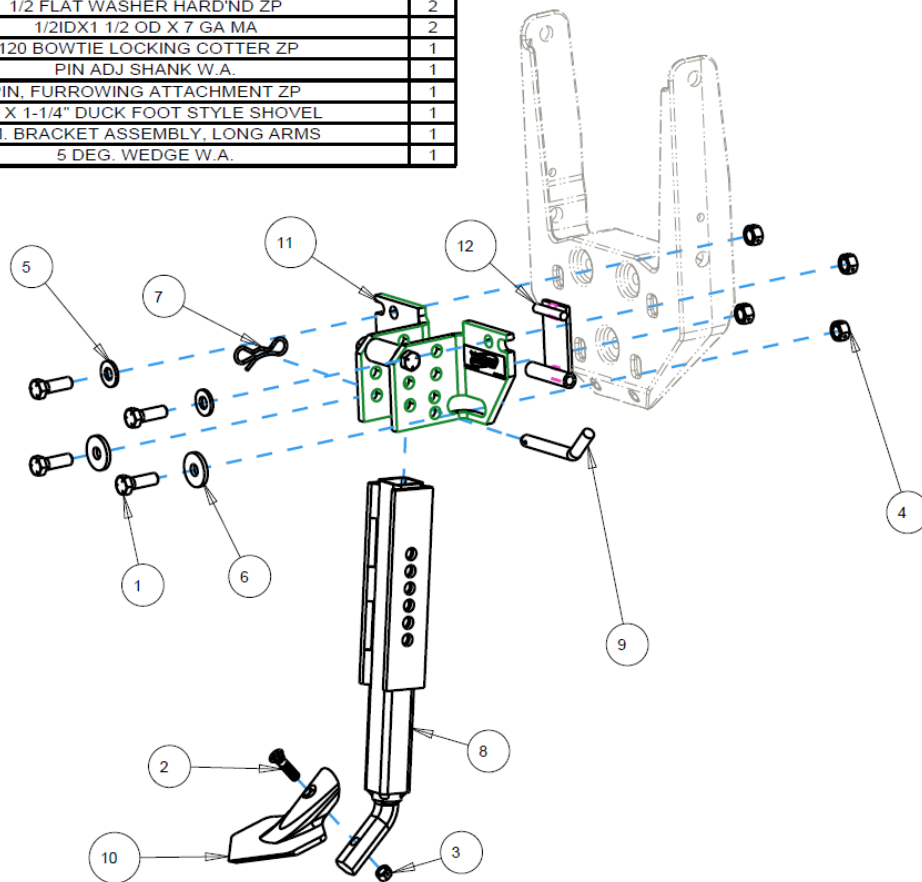
# INSTALLATION INSTRUCTIONS

## 2965-028, 2965-028-LA Pin Adjust Kits

**STEP 1:** Take any existing faceplate mounted row cleaners or coulters off of the row unit.

**STEP 2:** Install the mount bracket assembly to the faceplate using the provided ½"x1-1/2" bolts. Do not tighten bolts yet. For the 2965-028-LA, for 21" long parallel arms, install the 2967-299 wedge plate so the bottom bushing is captured by the bottom slot in the mount assembly (see picture below).

ITEM	PART NO.	DESCRIPTION	QTY
1	2502-294	1/2-13 X 1-1/2 HHCS GR5 ZP	4
2	2506-310	3/8-16 X 1-1/2 #3 REG. HEAD PLOW BLT GR. 8 ZP.	1
3	2520-255	3/8-16 LOCK HEX NUT, GR A, ZP	1
4	2520-357	1/2-13 LOCK HEX NUT, GR A, ZP	4
5	2526-355	1/2 FLAT WASHER HARD'ND ZP	2
6	2527-330	1/2IDX1 1/2 OD X 7 GA MA	2
7	2570-448	.120 BOWTIE LOCKING COTTER ZP	1
8	2965-211	PIN ADJ SHANK W.A.	1
9	2965-305	PIN, FURROWING ATTACHMENT ZP	1
10	2965-410	1/4" X 1-1/4" DUCK FOOT STYLE SHOVEL	1
11	2967-195-LA	R.M. BRACKET ASSEMBLY, LONG ARMS	1
12	2967-299	5 DEG. WEDGE W.A.	1



**STEP 2 Continued:** For the 2965-028, install the mount bracket assembly (2967-195). At this time tighten the mounting hardware.

**STEP 3:** Install the pin adjust shank. –For the 2965-028, the shank goes in front of the two ½" bolts and bushings. –For the 2965-028-LA, the shank goes behind the ½" bolt and in front of the "wedge" plate.

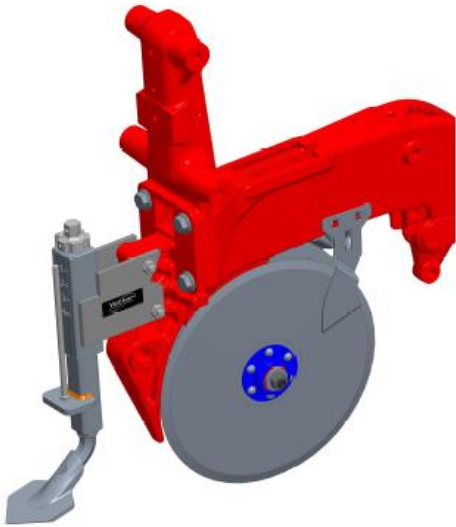
**STEP 4:** Install the duck foot shovel using the 3/8" plow bolt and lock nut. Use the pin to adjust depth up or down to achieve desired working depth.

# INSTALLATION INSTRUCTIONS

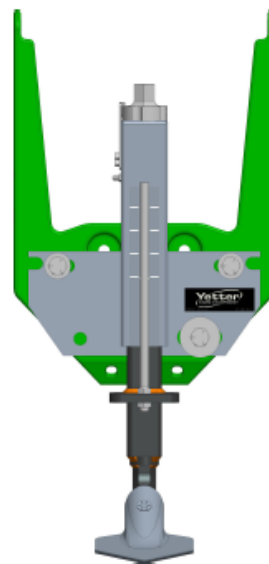
## 2965-052, 2965-053, 2965-057 Screw Adjust Kits

**STEP 1:** Take any existing faceplate mounted coulters or row cleaner off the row unit

**STEP 2:** For Case row unit (2965-053), attach to the row unit using the provided ½” bolt and lock nuts. This may require taking off one or both of the gauge wheel arms.



**STEP 2 Continued:** For all other row units attach using three ½” bolts and locknuts. NOTE: put two bolts in the top mounting holes, and the smaller flat washer (2526-355) under the head of the bolt. Put a single bolt in one of the bottom holes with the larger flat washer (2526-402) under the head of the bolt. NOTE: the side with which the bottom bolt is installed will vary depending on planter model.



**STEP 3:** Install the duck foot shovel using the 3/8” plow bolt and lock nut. Use the knob to adjust the depth up or down to achieve desired working depth.

# INSTALLATION INSTRUCTIONS

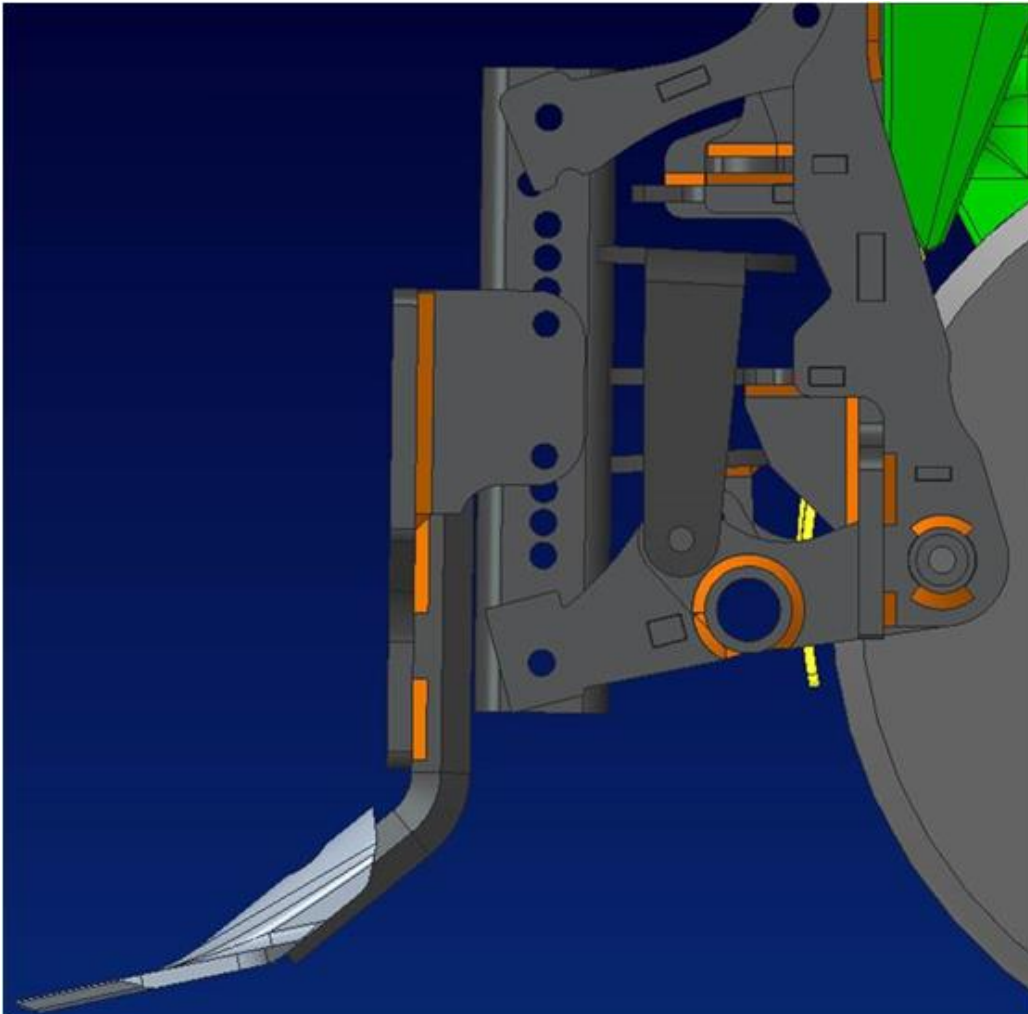
## Air Adjust Kit 2965-040

**STEP 1:** Take the snake head off the residue manager stem by removing the two 3/8" bolts and lock nuts. This is easier if the residue manager wheels are taken off first.

**STEP 2:** Using the provided 3/8" bolts and lock nuts attach the Resweep shank to the square stem of the residue manager. A good starting point is to have 3 holes exposed above the shank, and 3 holes exposed below the shank, on the square stem.

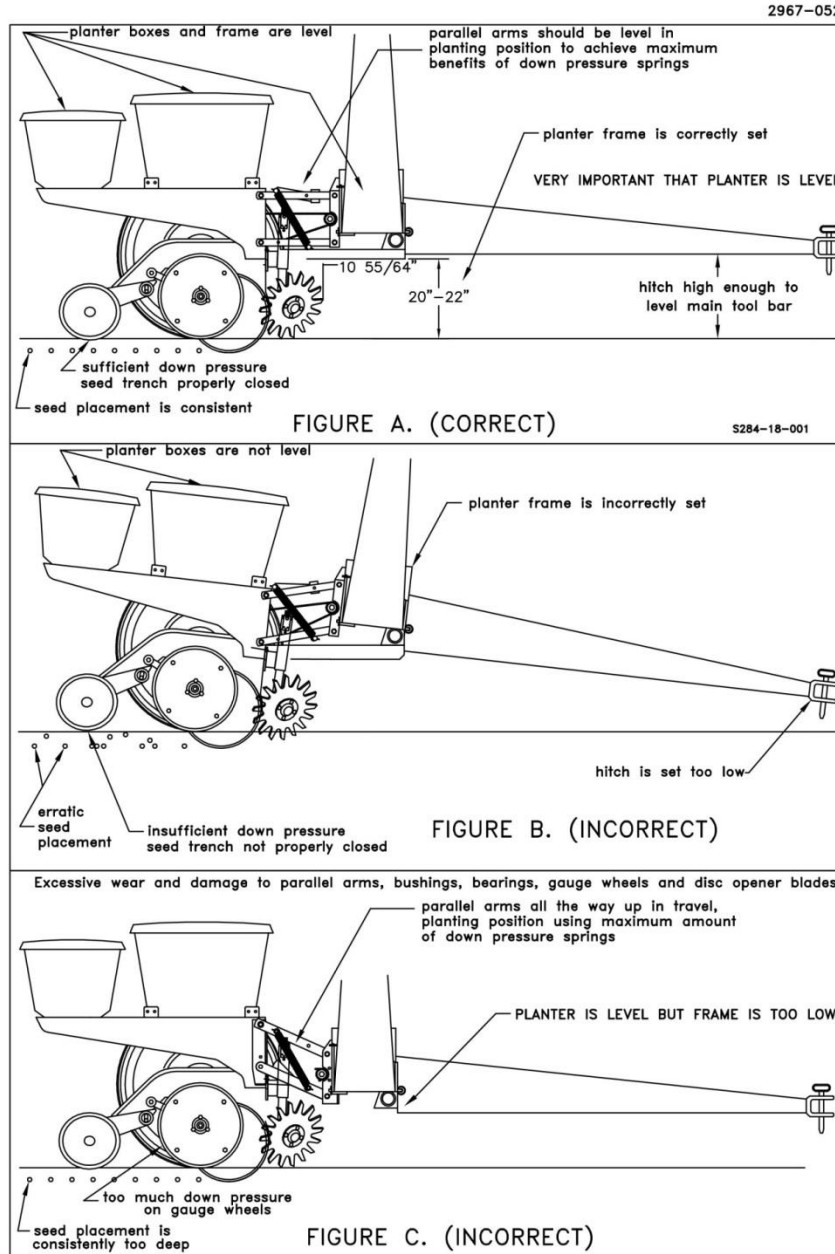
**STEP 3:** Install the duck foot shovel using the 3/8" plow bolt and lock nut. Depth adjustment can be made in 1/2" increments by removing the 3/8" hex head bolts and lock nuts, and moving the shank up or down.

**STEP 4:** Set the RU circuit (up pressure circuit) to 10 psi. This keeps some pressure in the air bag to prevent it from getting pinched. Set the RD and WT circuit to 50 psi. This will lock the unit down and maintain a consistent depth. DO NOT try to adjust the depth with the air pressure circuits.



# OPERATION

A good starting point for depth is  $\frac{3}{4}$ ". Scouting behind the planter is critical for proper performance. If the unit is run to shallow it will not sufficiently take out the old crop stand. If it is run to deep it can leave a furrow over the seed zone. A widely set drag chain is recommended to help drag some dirt back to the center of the row, as the shovel will naturally throw dirt out.

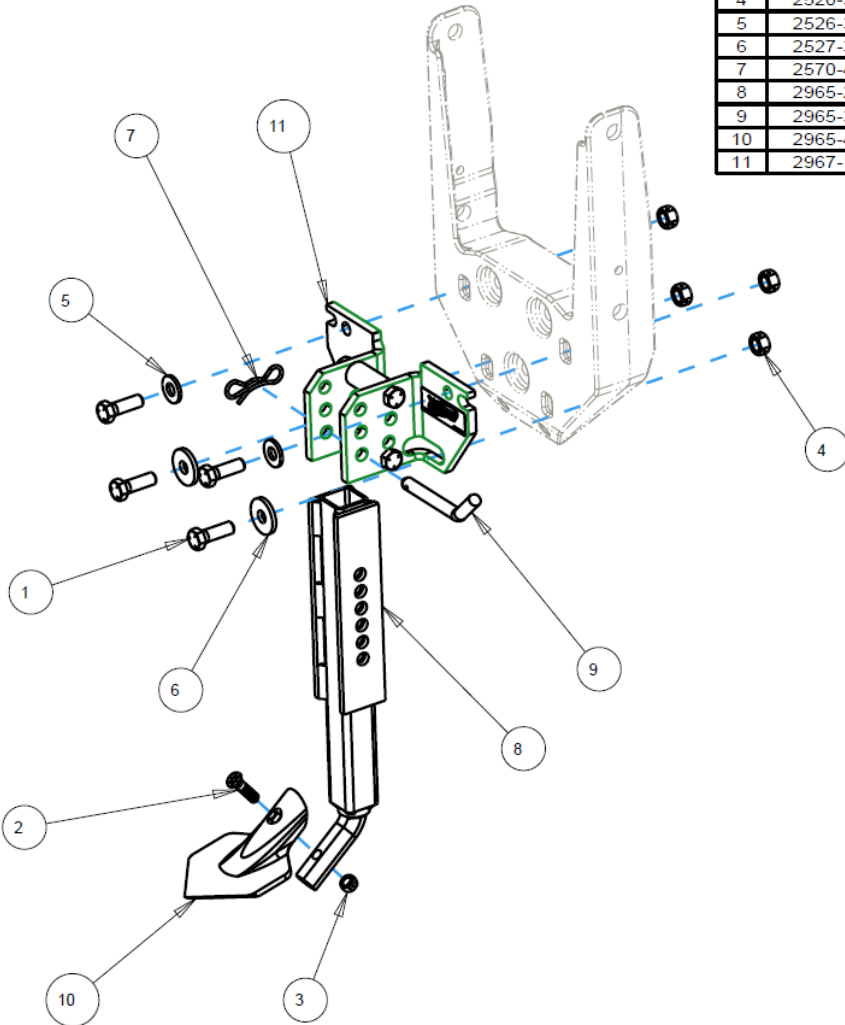




# PART IDENTIFICATION

## 2965-028

ITEM	PART NO.	DESCRIPTION	QTY
1	2502-294	1/2-13 X 1-1/2 HHCS GR5 ZP	4
2	2506-310	3/8-16 X 1-1/2 #3 REG. HEAD PLOW BLT GR. 8 ZP.	1
3	2520-255	3/8-16 LOCK HEX NUT, GR A, ZP	1
4	2520-357	1/2-13 LOCK HEX NUT, GR A, ZP	4
5	2526-355	1/2 FLAT WASHER HARD'ND ZP	2
6	2527-330	1/2IDX1 1/2 OD X 7 GA MA	2
7	2570-448	.120 BOWTIE LOCKING COTTER ZP	1
8	2965-210	PIN ADJ SHANK W.A.	1
9	2965-305	PIN, FURROWING ATTACHMENT ZP	1
10	2965-410	1/4" X 1-1/4" DUCK FOOT STYLE SHOVEL	1
11	2967-195	R.M. BRACKET ASSEMBLY	1

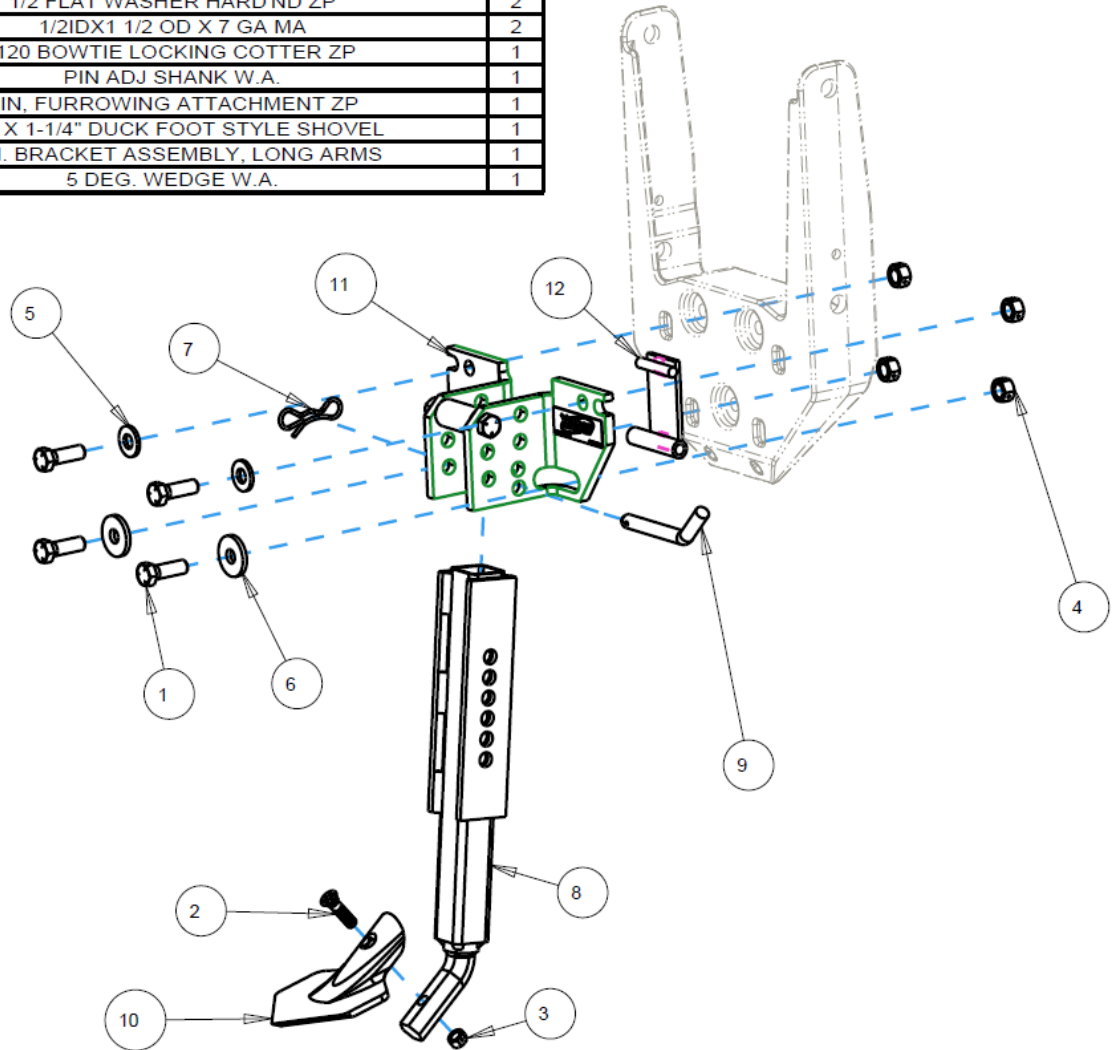


ISO2965-028

# PART IDENTIFICATION

## 2965-028-LA

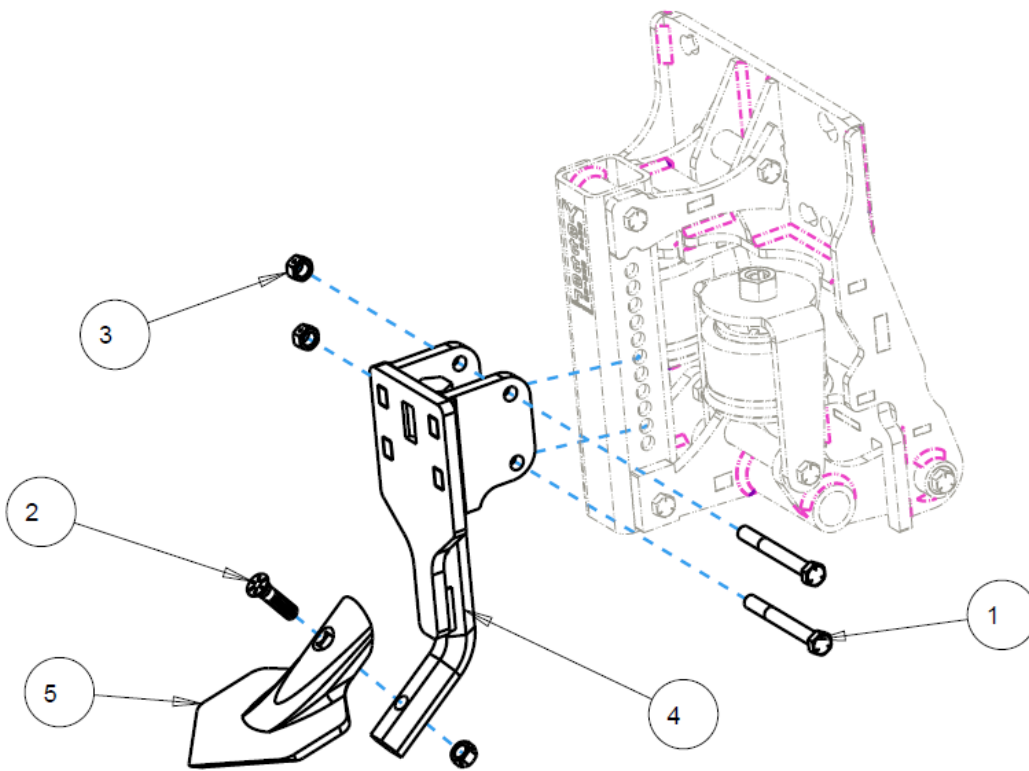
ITEM	PART NO.	DESCRIPTION	QTY
1	2502-294	1/2-13 X 1-1/2 HHCS GR5 ZP	4
2	2506-310	3/8-16 X 1-1/2 #3 REG. HEAD PLOW BLT GR. 8 ZP.	1
3	2520-255	3/8-16 LOCK HEX NUT, GR A, ZP	1
4	2520-357	1/2-13 LOCK HEX NUT, GR A, ZP	4
5	2526-355	1/2 FLAT WASHER HARD'ND ZP	2
6	2527-330	1/2IDX1 1/2 OD X 7 GA MA	2
7	2570-448	.120 BOWTIE LOCKING COTTER ZP	1
8	2965-211	PIN ADJ SHANK W.A.	1
9	2965-305	PIN, FURROWING ATTACHMENT ZP	1
10	2965-410	1/4" X 1-1/4" DUCK FOOT STYLE SHOVEL	1
11	2967-195-LA	R.M. BRACKET ASSEMBLY, LONG ARMS	1
12	2967-299	5 DEG. WEDGE W.A.	1



# PART IDENTIFICATION

## 2965-040

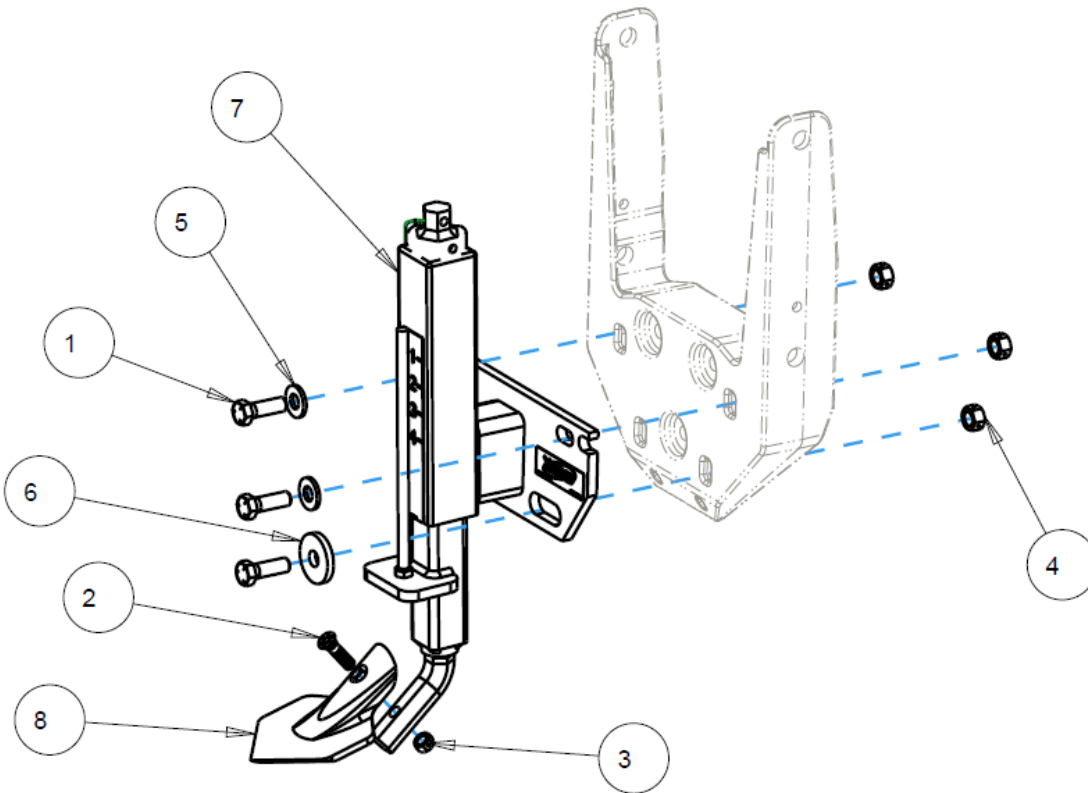
ITEM	PART NO.	DESCRIPTION	QTY
1	2502-233	3/8-16 X 3 1/4 HHCS GR 5 ZP	2
2	2506-310	3/8-16 X 1-1/2 #3 REG. HEAD PLOW BLT GR. 8 ZP.	1
3	2520-255	3/8-16 LOCK HEX NUT, GR A, ZP	3
4	2965-215	AIR ADJUST SHANK W.A.	1
5	2965-410	1/4" X 1-1/4" DUCK FOOT STYLE SHOVEL	1



# PART IDENTIFICATION

## 2965 -052

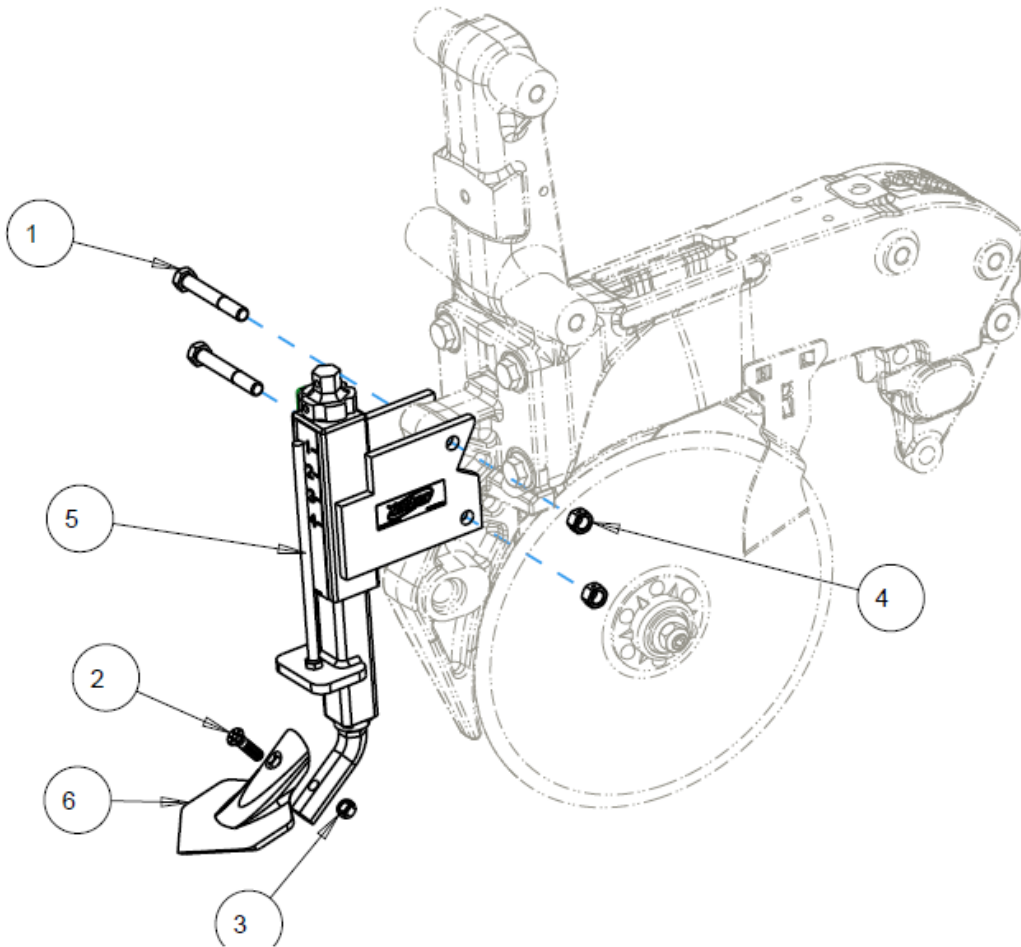
ITEM	PART NO.	DESCRIPTION	QTY
1	2502-294	1/2-13 X 1-1/2 HHCS GR5 ZP	3
2	2506-310	3/8-16 X 1-1/2 #3 REG. HEAD PLOW BLT GR. 8 ZP.	1
3	2520-255	3/8-16 LOCK HEX NUT, GR A, ZP	1
4	2520-357	1/2-13 LOCK HEX NUT, GR A, ZP	3
5	2526-355	1/2 FLAT WASHER HARD'ND ZP	2
6	2526-402	9/16ID X 1-3/4 OD X 1/4MBZP	1
7	2965-111	SCREW ADJUST SUB ASSEMBLY, RESWEEP	1
8	2965-410	1/4" X 1-1/4" DUCK FOOT STYLE SHOVEL	1



# PART IDENTIFICATION

## 2965-053

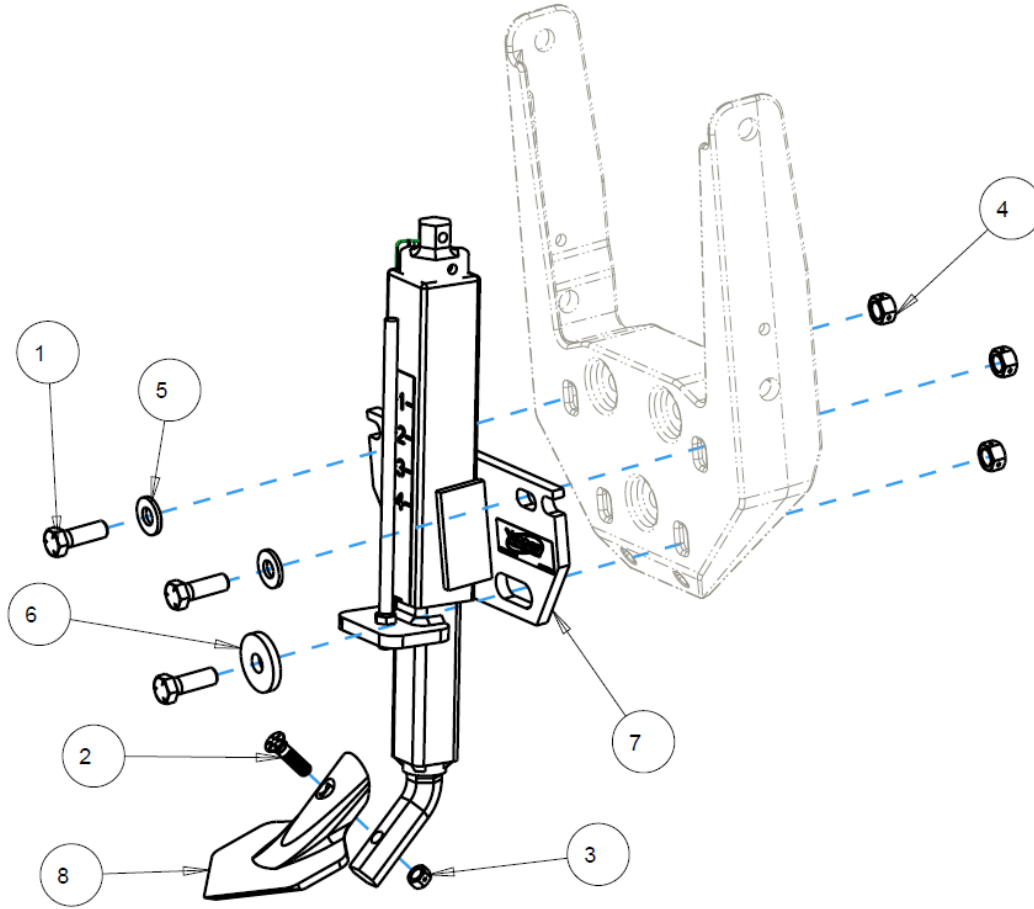
ITEM	PART NO.	DESCRIPTION	QTY
1	2502-316	1/2-13 X 3-1/2 HHCS GR5 ZP	2
2	2506-310	3/8-16 X 1-1/2 #3 REG. HEAD PLOW BLT GR. 8 ZP.	1
3	2520-255	3/8-16 LOCK HEX NUT, GR A, ZP	1
4	2520-357	1/2-13 LOCK HEX NUT, GR A, ZP	2
5	2965-114	SCREW ADJUST SUB ASSEMBLY, CNH, RESWEEP	1
6	2965-410	1/4" X 1-1/4" DUCK FOOT STYLE SHOVEL	1



# PART IDENTIFICATION

## 2965-057

ITEM	PART NO.	DESCRIPTION	QTY
1	2502-294	1/2-13 X 1-1/2 HHCS GR5 ZP	3
2	2506-310	3/8-16 X 1-1/2 #3 REG. HEAD PLOW BLT GR. 8 ZP.	1
3	2520-255	3/8-16 LOCK HEX NUT, GR A, ZP	1
4	2520-357	1/2-13 LOCK HEX NUT, GR A, ZP	3
5	2526-355	1/2 FLAT WASHER HARD'ND ZP	2
6	2526-402	9/16ID X 1-3/4 OD X 1/4MBZP	1
7	2965-113	SCREW ADJUST SUB ASSEMBLY, LONG ARMS, RESWEEP	1
8	2965-410	1/4" X 1-1/4" DUCK FOOT STYLE SHOVEL	1



## **NOTES:**



A Tradition of Solutions since 1930

Yetter Farm Equipment Co

PO BOX 358 109 S. McDonough

Colchester, IL 62326-0358

Phone: 309-776-4111

Toll Free: 800-447-5777

Email: [info@yetterco.com](mailto:info@yetterco.com)

For updated models and manuals visit the Yetter website:

[www.yetterco.com](http://www.yetterco.com)

© Yetter Farm Equipment Co. All Rights Reserved

2565-985\_REV\_A – 09/2024