

**Yetter**  
... for land's sake

**OPERATOR'S MANUAL  
GRAIN DRILL MARKERS**

**YETTER MANUFACTURING CO.**  
**FOUNDED 1930**

Colchester, IL 62326-0358 • 309/776-4111  
Toll free 800/447-5777  
309/776-3222 (Fax)

**Yetter**

## FOREWORD

You've just joined an exclusive but rapidly growing club.


For our part, we want to welcome you to the group and thank you for buying Yetter Drill Markers.

We hope your new Yetter Drill Markers will help you achieve both increased productivity and increased efficiency so that you may generate more profit.

This operator's manual has been designed into four major sections.

Foreword, Safety Precautions, Installation and Operation.

Throughout the manual references may be made to left side and right side. These terms are used as viewed from the operator's seat facing the front of the tractor.

 This **SAFETY ALERT SYMBOL** indicates important safety messages in the manual. When you see this symbol, be alert to the possibility of **PERSONAL INJURY** and carefully read the message that follows.

The word **NOTE** is used to convey information that is out of context with the manual text. It contains special information such as specifications, techniques, reference information of a supplementary nature.

The word **IMPORTANT** is used in the text when immediate damage will occur to the machine due to improper technique or oper-


ation. Important will apply to the same information as specified by note only of an immediate and urgent nature.

It is the responsibility of the user to read the operator's manual and comply with the safe and correct operating procedure and to lubricate and maintain the product according to the maintenance schedule in the operator's manual.

The user is responsible for inspecting his machine and for having parts repaired or replaced when continued use of the product would cause damage or excessive wear to the other parts.

It is the user's responsibility to deliver his machine to the Yetter dealer who sold him the product for service or replacement of defective parts which are covered by the warranty policy.

**IMPORTANT!** When folding markers, watch clearance to cab on tractor or operator if tractor not fitted with cab.

 If you are unable to understand or follow the instructions provided in this publication, consult your local Yetter dealer or contact:

**YETTER MANUFACTURING CO.**  
309/776-4111  
309/776-3222 (Fax)

## WARRANTY POLICY

Yetter Manufacturing warrants all products manufactured and sold by it against defect in material. This warranty being expressly limited to replacement at the factory of such parts or products as shall appear to be defective after inspection. This warranty does not obligate the Company to bear cost of labor in replacement of parts, It is the policy of the company to make improvements without incurring obligations to add them to any unit already sold. No warranty is made or authorized to be made, other than herein set forth. This warranty is in effect for 1 year after purchase.

Dealer \_\_\_\_\_

Yetter Manufacturing warrants its own products only and cannot be responsible for damage to equipment on which mounted.

## SAFETY

A brief description of signal words that may be used in this manual:

**CAUTION:** Used as a general reminder of good safety practices or to direct attention to unsafe practices.

**WARNING:** Denotes a specific potential hazard.

**DANGER:** Denotes the most serious specific potential hazard.

## SAFETY PRECAUTIONS

You can make your farm a safer place to live and work if you observe the safety precautions given. Study these precautions carefully and insist that they be followed by those working with you and for you.

Finally, remember this: an accident is usually caused by someone's carelessness, neglect or oversight.



### WARNING

Never clean, lubricate or adjust a machine that is in motion. Always lower or block the implement before performing service.

If machine must be serviced in the raised position, jack or block it up to prevent it from accidentally falling and injuring someone.

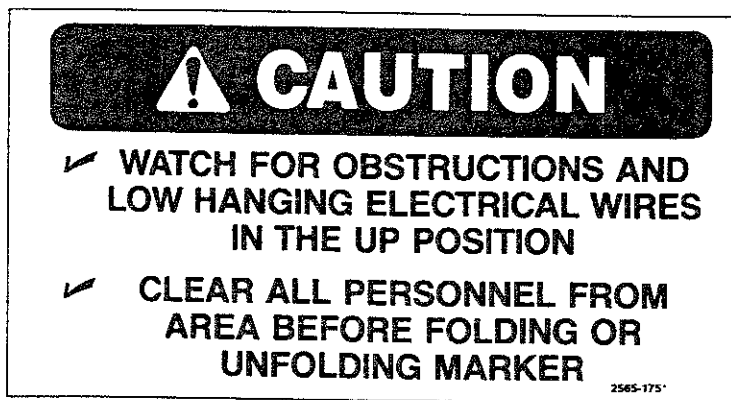
Check clearance of markers from tractor cab or operator when not equipped with cab.

Do not allow riders on the tractor or implement.

Use speeds and caution dictated by the terrain being traversed. Do not operate on any slope steep enough to cause tipping or loss of control.

Read and understand the operator's manual and require all other persons who will operate the equipment to do the same.

Be familiar with all tractor and implement controls and be prepared to stop engine and implements quickly in an emergency.



Consult your implement and tractor operator's manual for correct and safe operating practices.

Beware of towed implement width and allow safe clearance.

**FAILURE TO HEED MAY RESULT IN PERSONAL INJURY OR DEATH.**

# MARKER APPLICATION CHART

**Yetter Part  
Number**

**Description**

6100-131	3-Fold Marker, 30 ft. for 30 ft. Drills, 8rW & 12rN Planters etc.
6100-125	3-Fold Marker, 24 ft. for 24 ft. Drills
6100-116	2-Fold Marker, 14-20 ft. for 14-20 ft. Drills, 4rN & 6rN Planters etc.

## MOUNTING KITS

6001-018 JD 455	6001-118 M & W, Marliss, & Tye
6001-022 Tye Series V	6001-120 Great Plains
6001-023 IH 6200	(Does not fit Great Plains 3 section 30 ft. folding)
6001-024 JD 9300	6001-191 JD 515 & 520
6001-042 IH 5500	6001-195 IH 5200 & 5400
6001-117 JD 8000	6001-198 JD 750

Various U-bolts and brackets are available for planter applications.

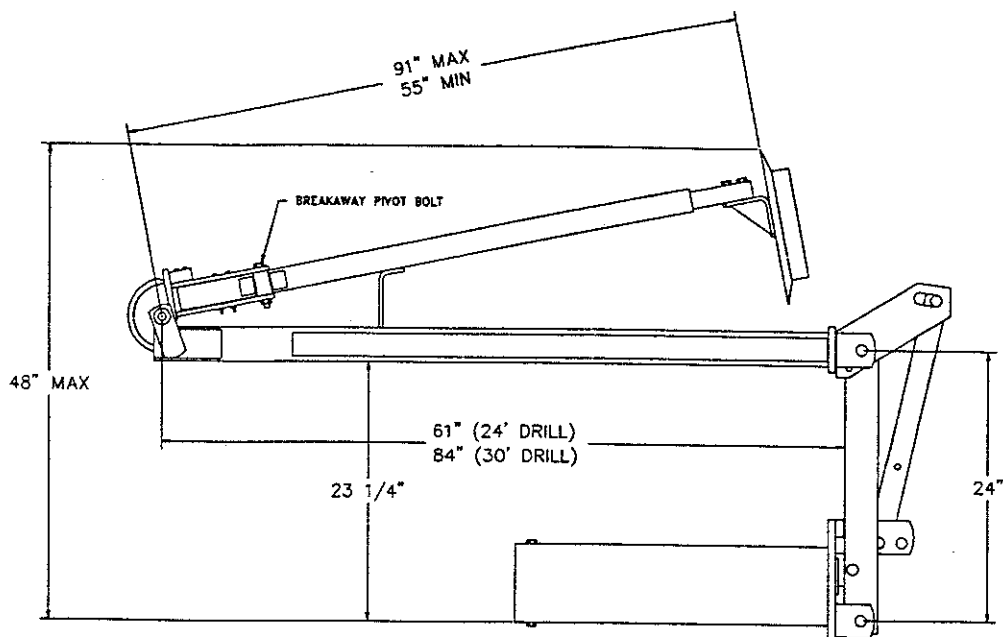


FIGURE 1

S 177

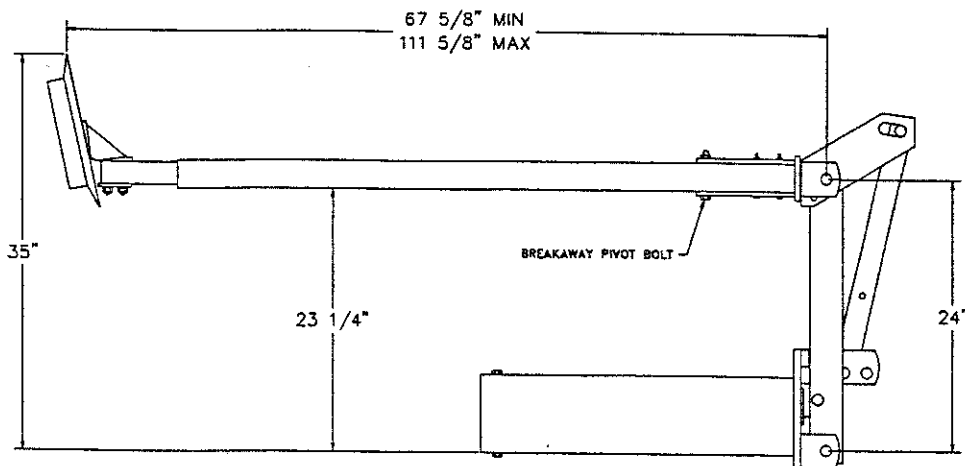


FIGURE 2

## GENERAL INFORMATION

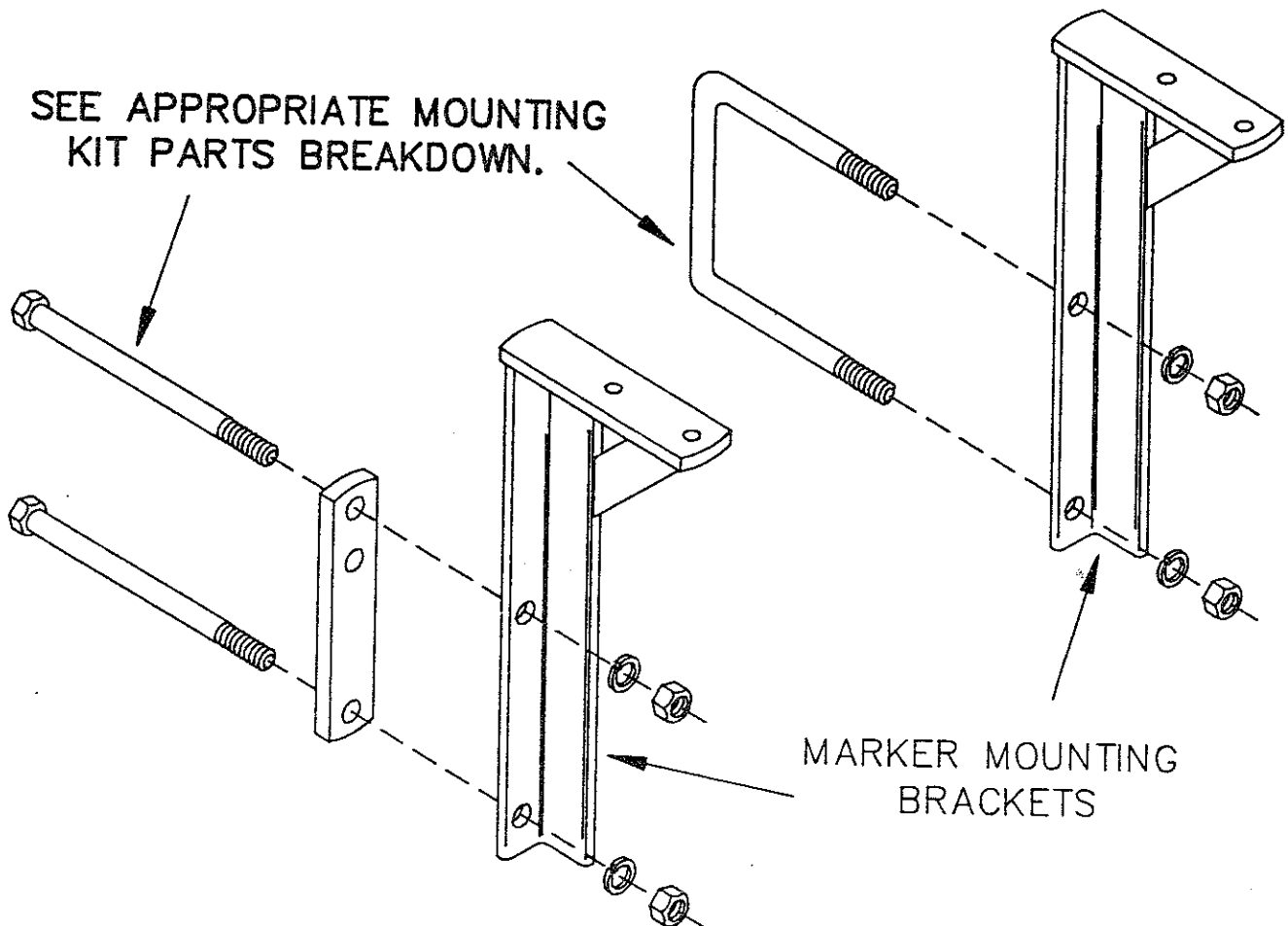
Yetter Drill Markers were designed to operate on grain drills and planters from 14 feet to 30 feet wide. For non-folding grain drills from 14 to 22 feet wide, double fold markers are used (see Figure 1). For folding drills up to 30 feet wide, triple fold markers are required, see Figure 2.

All Yetter markers are hydraulically actuated. A sequence valve is provided to alternate automatically from left to right marker. After each raise cycle the valve switches hydraulic oil flow to the opposite marker.

Yetter markers were designed for hydraulic systems providing 2000 psi hydraulic pressure. For hydraulic systems that have variable flow control, this control may be used to adjust marker speed. It may be necessary to provide restrictors in the lines to reduce marker speed with some tractors. See Hydraulic Installation page 10.

## MOUNTING KIT INSTALLATION

Great Plains, M & W, Marlist, Tye, IH 5200/5400 & JD 750 assemble mounting brackets to front of drill frame as shown using hardware provided in the mounting kit for your particular type drill. See appropriate drawing and parts list.

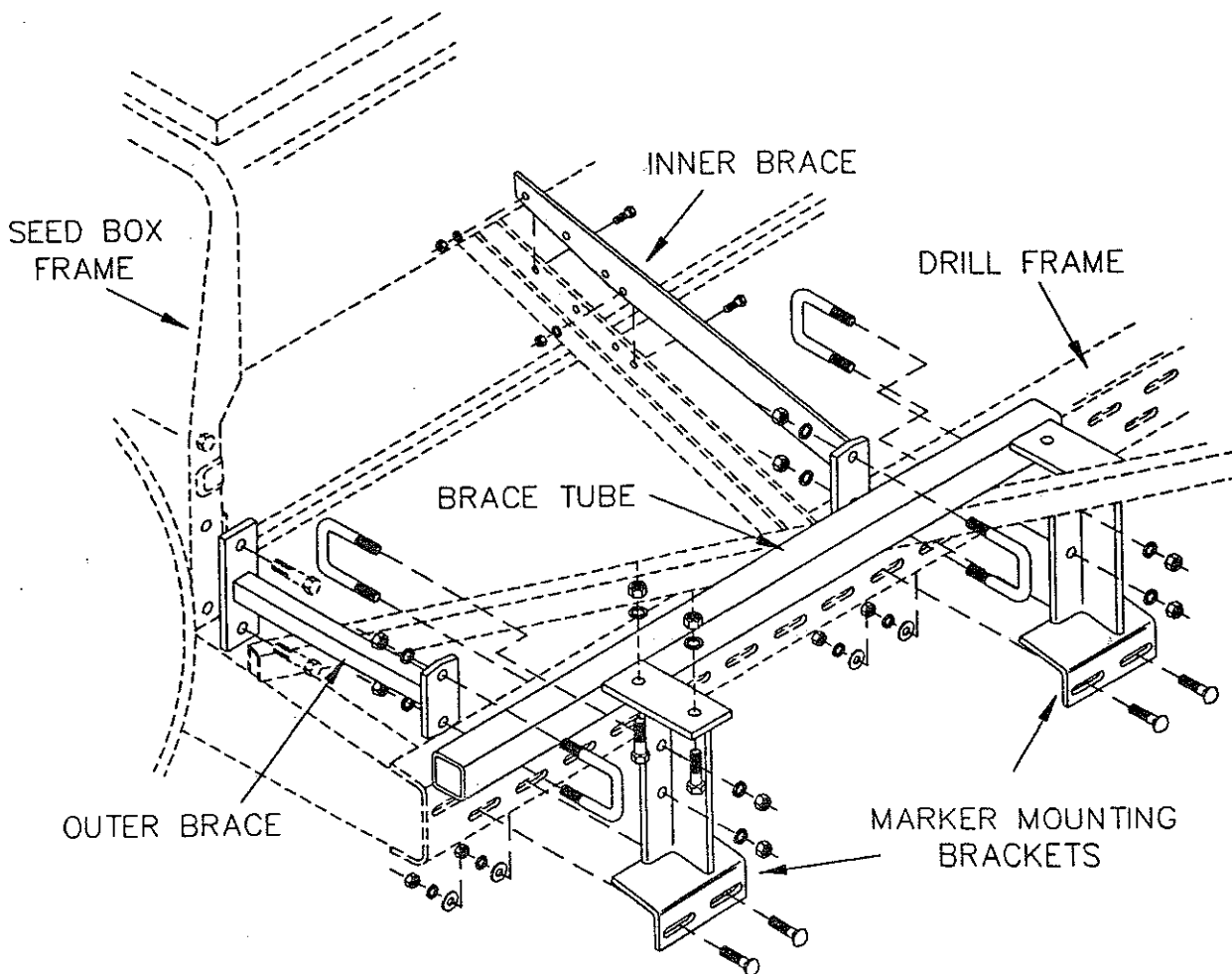


# INSTALLATION INSTRUCTIONS

## 6001-117 MOUNT KIT, JOHN DEERE 8000/450

1. Remove the lower two 1-1/2" bolts located on the front side of the seed box frame on each end of the drill. Mount outer brace to frame by replacing the 1/2" bolts, lockwashers and nuts.
2. Mount inner brace to the brace on each end of drill frame using 5/16 x 1" bolts, lockwashers and nuts as shown.
3. Attach the 36" brace tube to the inner and outer braces using 1/2 x 2 x 3" U-bolts, lockwashers and nuts.
4. Assemble marker mounting brackets to the 36" brace tube using 1/2 x 2 x 3" U-bolts, lockwashers and nuts.
5. Secure the marker mounting brackets through the lower slots in drill frame using 7/16 x 1-1/2" carriage bolts, flatwashers and nuts as shown.

**NOTE:** Assemble all brackets loosely before tightening bolts.

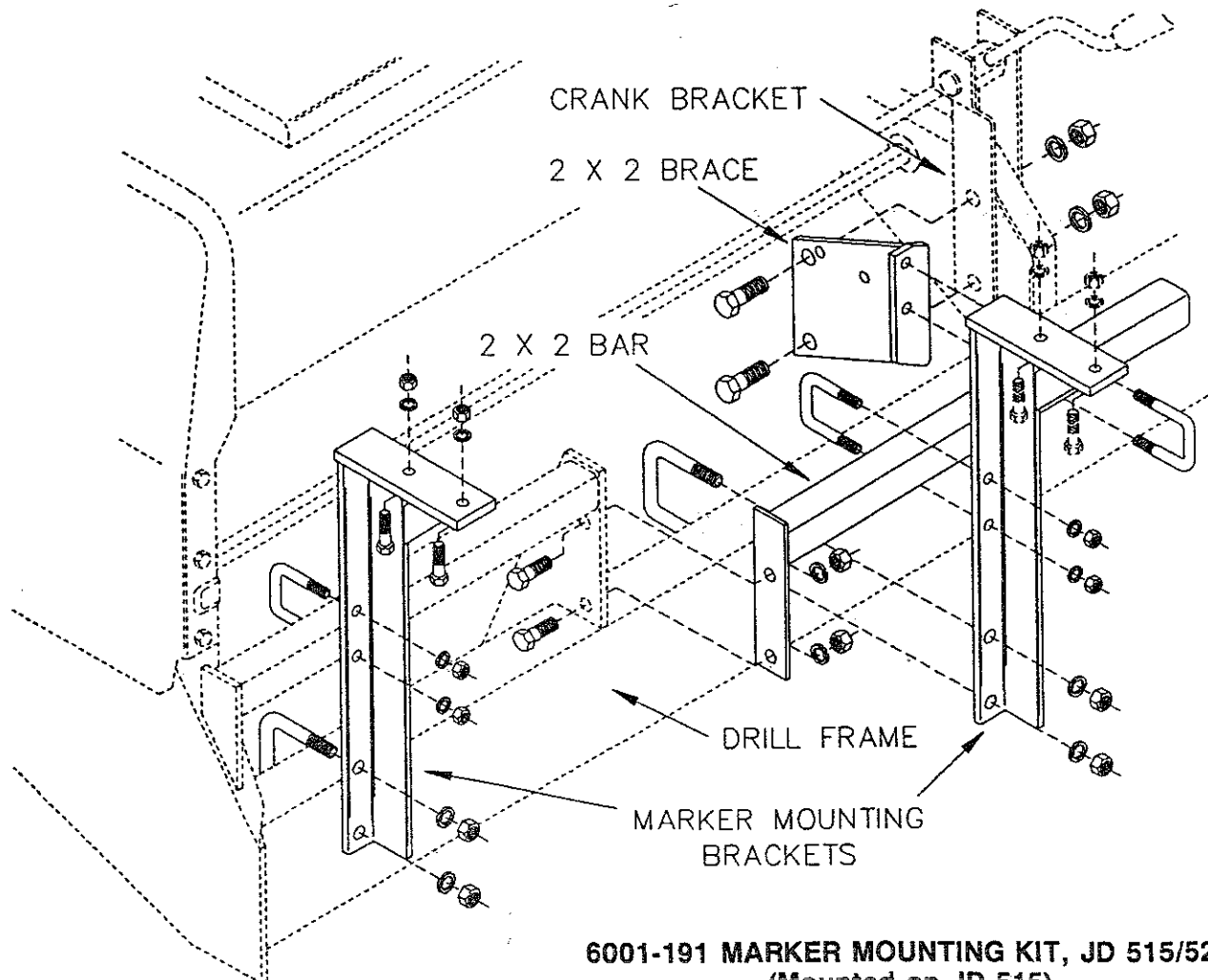


# INSTALLATION INSTRUCTIONS

## 6001-191 MOUNT KIT, JOHN DEERE 515 & 520

### JOHN DEERE 515 DRILL

1. Remove the two 3/4" bolts from the adjustment crank bracket on each end of the drill. Mount the right hand and left hand 2 x 2" braces to the outer side of the crank brackets as shown using the 3/4 x 1-1/2" bolts, lockwashers and nuts provided.
2. Attach the 2 x 2" bar to end of the 2 x 2" bar on each end of the drill frame using 5/8 x 1-1/2" bolts, lockwashers and nuts as shown. Secure the other end of the 2 x 2" bar to the brace using 1/2 x 2 x 3" U-bolts, lockwashers and nuts.
3. Assemble marker mounting brackets to the 2 x 2" bars using 1/2 x 2 x 3" U-bolts, lockwashers and nuts and through the drill frame using 5/8 x 3 x 4-1/2" U-bolts, lockwashers and nuts as shown.

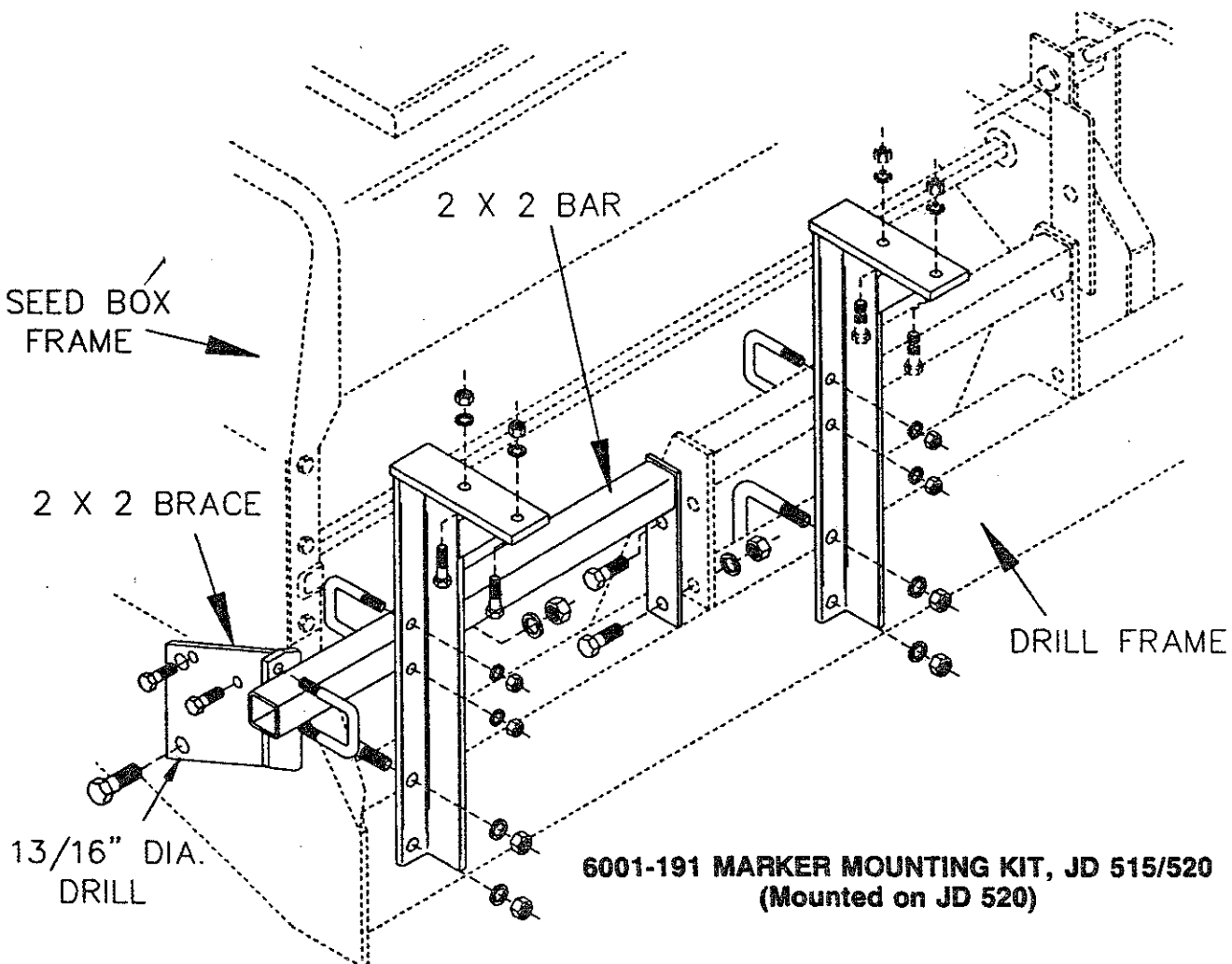


6001-191 MARKER MOUNTING KIT, JD 515/520  
(Mounted on JD 515)

# INSTALLATION INSTRUCTIONS

## JOHN DEERE 520 DRILL

1. Mount the right hand and left hand 2 x 2" braces to the outer side of each end of the drill, by first removing the front two 1/2" bolts on the side of seed box frame.
2. Install brace using 1/2 x 1-1/2" bolts, lockwashers and nuts provided.
3. Using the lower 13/16" diameter brace hole as a guide, drill a 13/16" diameter hole through the drill frame. Secure lower end of the brace using a 3/4 x 1-1/2" bolt, lockwasher and nut.
4. Attach the 2 x 2" bar to outer end of the 2 x 2" bar on each end of the drill frame using 5/8 x 1-1/2 bolts, lockwashers and nuts as shown. Secure the other end of the 2 x 2" bar to the brace using 1/2 x 2 x 3" U-bolts, lockwashers and nuts.
5. Assemble marker mounting brackets to the 2 x 2" bars using 1/2 x 2 x 3" U-bolts, lockwashers and nuts and through the drill frame using 5/8 x 3 x 4-1/2" U-bolts, lockwashers and nuts as shown.



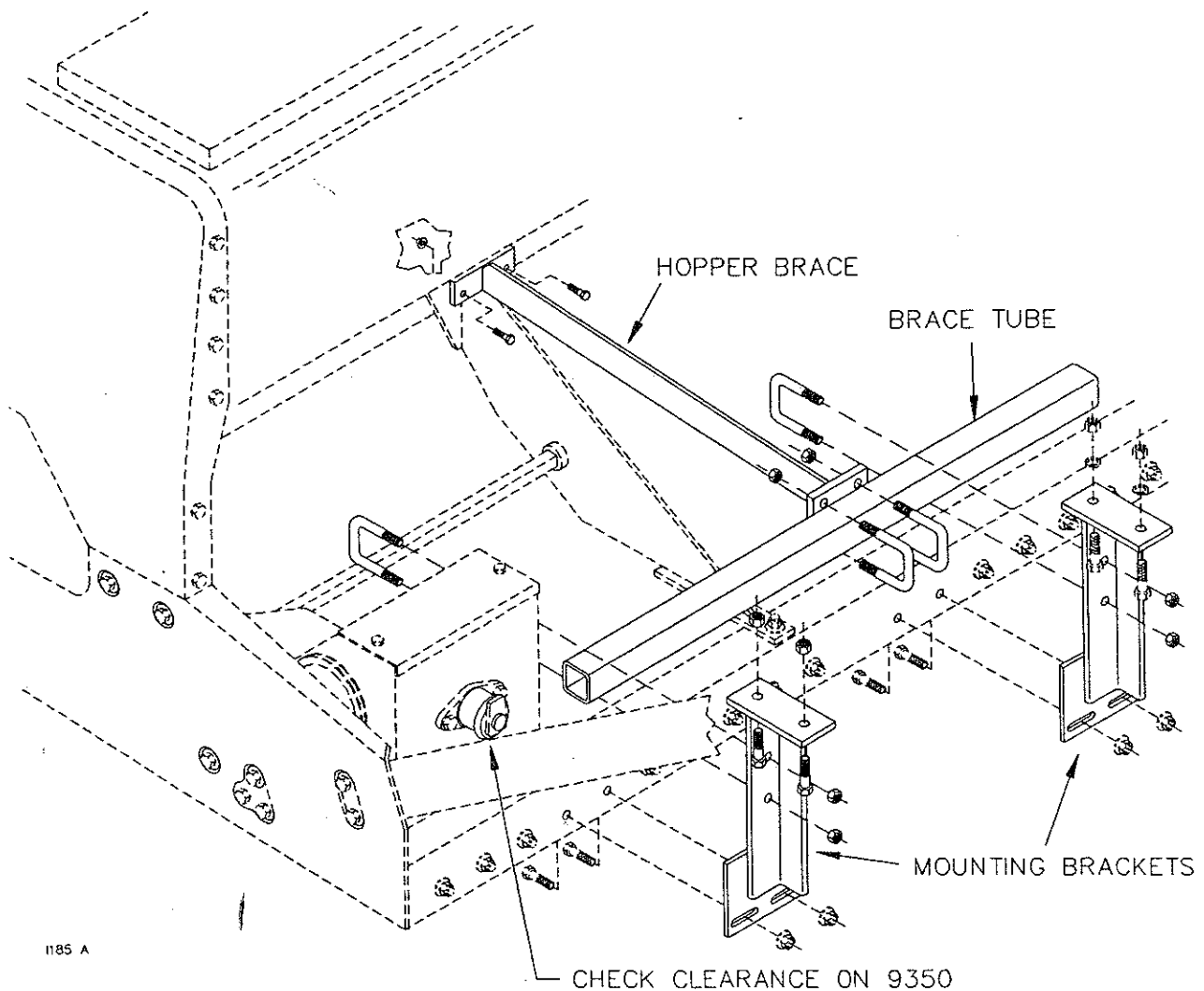


# INSTALLATION INSTRUCTIONS

## JOHN DEERE 9300 SERIES DRILLS

1. Attach a pair of Mounting Brackets to the front of the main frame using the existing drag arm bolts and flange nuts. Space the Mounting Brackets at approximately 22" or 24" depending on obstructions.
2. Attach 36" Brace Tube to the Mounting Brackets with 1/2 x 2 x 3" U-bolts, lockwashers and nuts.
3. Remove existing 5/16" bolts from existing hopper brace underneath hopper and then attach Brace to this point and to 36" Brace tube using 1/2 x 2 x 3 U-bolts, lockwashers and nuts.
4. Adjust spacings of the Mounting Brackets to suit bolt holes of Marker Base and tighten all mounting hardware.

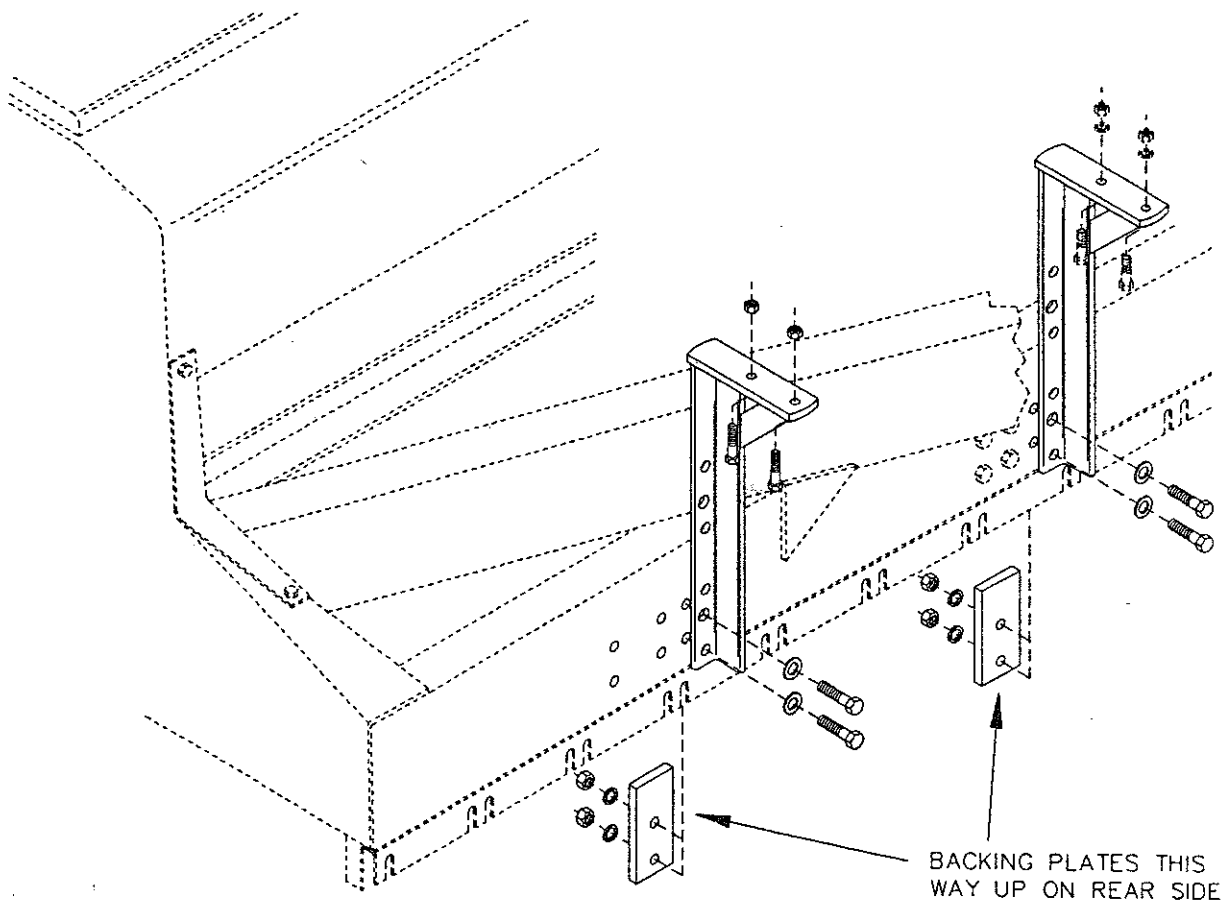
NOTE: On 9350 Drills (with fertilizer) check clearance of 36" Brace Tube relative to the gearbox knob.



# INSTALLATION INSTRUCTIONS

## CASE-IH 620/6200 SERIES DRILLS

1. Select pairs of holes on the front frame which are approximately 22" or 24" apart, to which the Mount Angles may be mounted similar to illustration. (This may include holes used for attaching press-wheel drag arms.) Drill these holes out to  $2\frac{1}{32}$ " diameter.
2. Loosely assemble Mount Angles to front side of frame and Backing Plates to rear side, as shown, using the  $\frac{5}{8}$  x 2- $\frac{1}{4}$ " bolts, flatwashers, lockwashers and hex nuts.  
NOTE: A backing plate will not be used if using holes for press-wheel drag arm bracket.
3. After the Marker Base has been secured to the top of the Mount Angles then the  $\frac{5}{8}$  x 2- $\frac{1}{4}$ " bolts and nuts should be fully tightened.

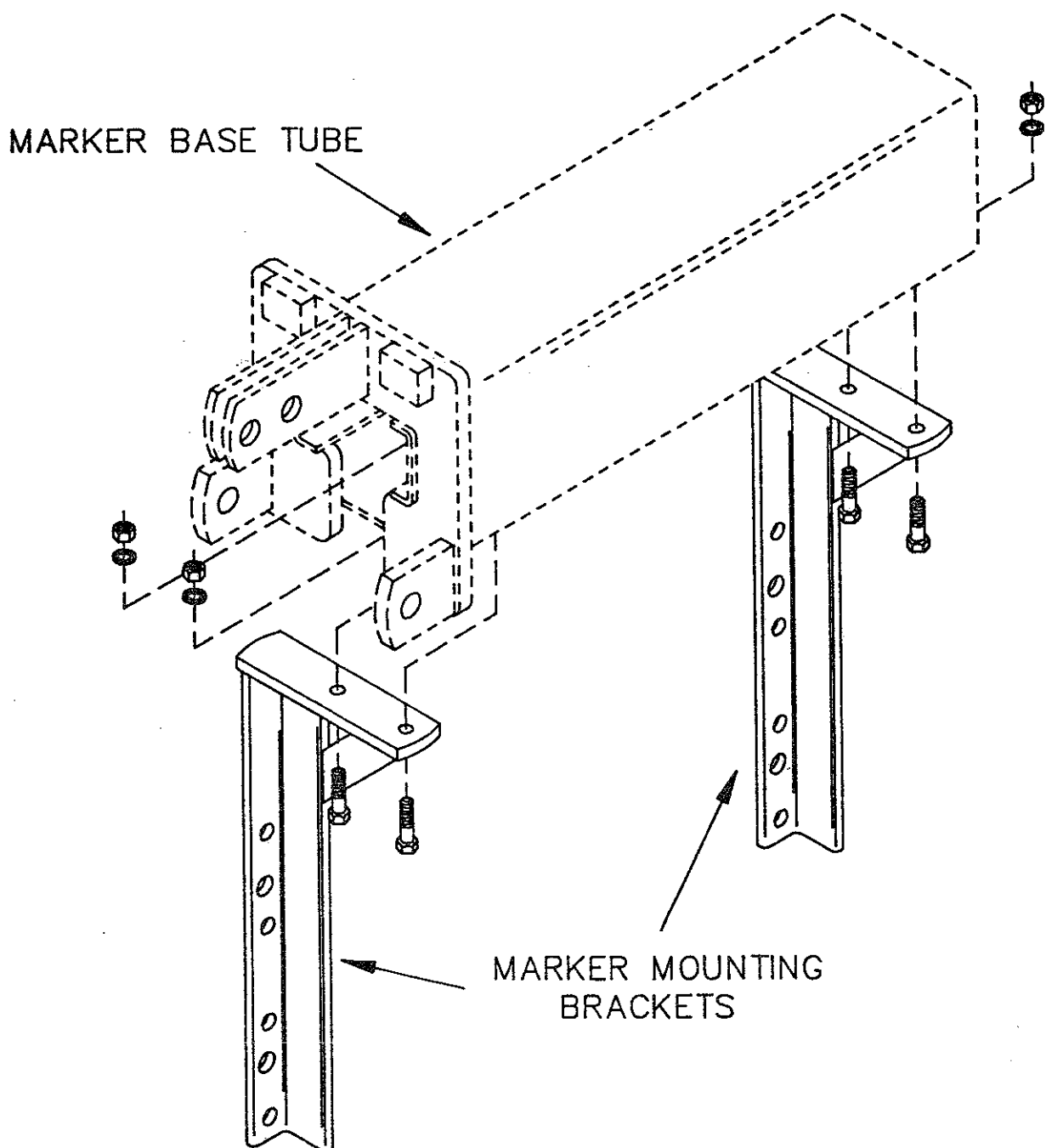


H86 A

# MARKER INSTALLATION

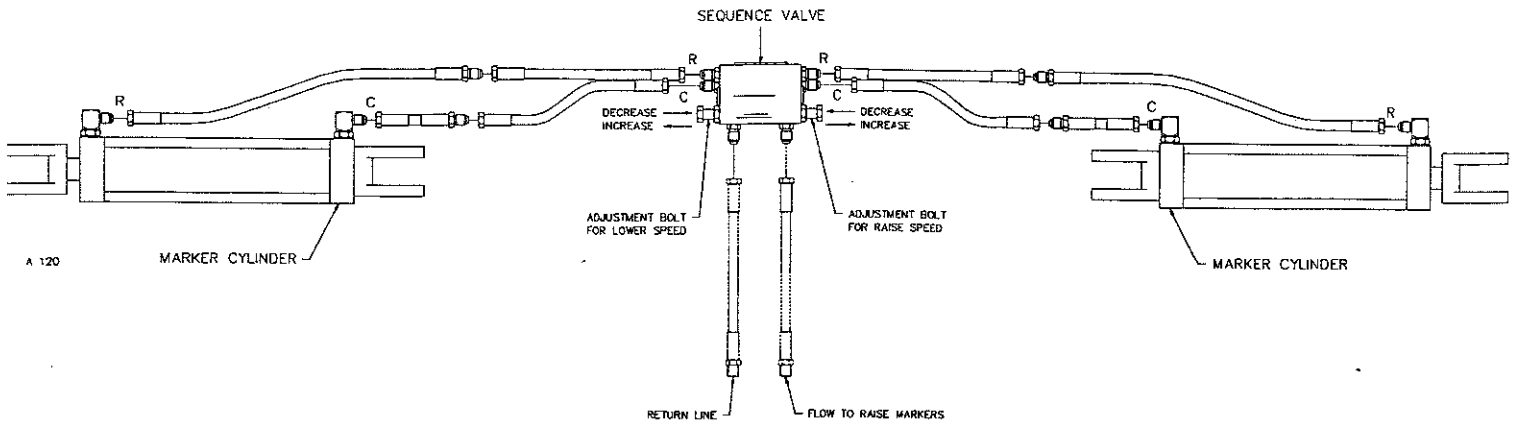
1. Mount marker assemblies to the mounting brackets. Left and right markers are determined by the location of breakaway pivot bolt. The breakaway pivot bolt is a 5/8" bolt which should be located to the rear of the marker. It may be necessary to change the breakaway pivot tube weldments to place the breakaway pivot bolt to the rear of the marker. It is also recommend the spare shear bolt be stored to the rear of the marker.
2. Mount marker base tube to mounting brackets using 1/2 x 1-3/4" capscrews, lockwashers and nut. Two sets of holes are provided in the marker base tube toward the outer end of the drill. Use the hole set that allows clearance of obstruction on the frame for your particular implement.

NOTE: If drill is equipped with a grass seeder attachment, it may be necessary to install a marker extension kit. See page 22.



# INSTALLATION

## HYDRAULIC SET-UP FOR MARKERS



## HYDRAULIC INSTALLATION

1. Bolt or weld sequence valve mounting bracket in a central location on the drill. Secure the sequence valve to the bracket with (2) 3/8 x 1" bolts, 3/8 lockwashers, and 3/8 flatwashers. Install the sequence valve with the stamping of the manufacturer's name and the part no. on top and readable from the rear of the drill.
2. Connect the clevis end cylinder hoses to the ports on the lower half of sequence valve. These ports are marked with a "C".
3. Connect the rod end cylinder hoses to the ports on the upper half of the sequence valve. These ports are marked with an "R".
4. Connect the port on the front of the sequence valve marked "RAISE" to the tractor or the pressure side of the drill lift system. If the markers are to lift with a Yetter Coulter Cart, connect this RAISE port to the lift side of the cart hydraulic system. This is the top port of the left-hand (master) cart cylinder.



**WARNING:** Lower the cart to the ground, and remove any pressure in the lines before opening the hydraulic lines to install the marker hoses.

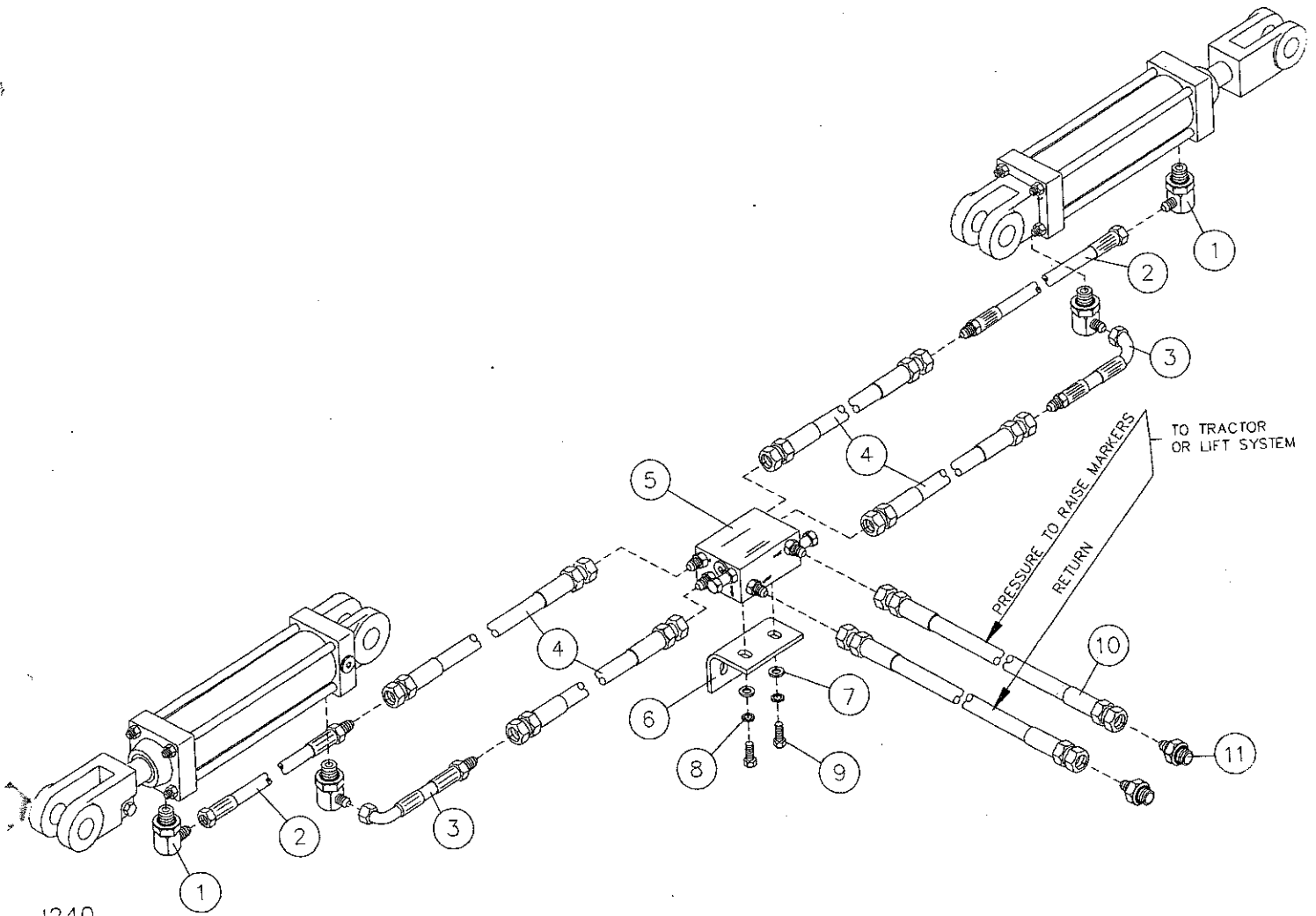
5. Connect the port on the front of the sequence valve marked "LOWER" to the tractor or the return side of the drill lift system. If the markers are to lower with a Yetter Coulter Cart, connect this LOWER port to the return side of the cart hydraulic system. This is bottom port of the right-hand (slave) cart cylinder.
6. **IMPORTANT** – Be VERY careful when first actuating markers with hydraulic pressure. Cycle hydraulics several times only

slightly lifting marker off stops. Apply pressure for several seconds in raise position to purge air from hydraulic cylinders. Only after several actuations like this should the marker be completely lowered. When lowering the first time proceed VERY slowly.

**NOTE:** Air left in the system will compress when pressurized; this may cause erratic and violent damaging motion of the marker arms.

7. Measure the time required for each marker to fold and unfold. It should take at least 4 seconds to fold and at least 4 seconds to unfold. If the markers are operating faster than 4 seconds they must be slowed down to provide adequate life.
8. Some tractors have a provision to control remote cylinder speed with an adjustment near the remote cylinder ports. If the markers are actuated with a separate tractor valve and this adjustment is available, try adjusting the speed using this adjustment to obtain the 4 second cycle time.
9. Adjustable restrictors are also provided in the sequence valve. These are adjusted with the bolts and jam nuts on each side of the sequence valve. Adjustments of the raise speed are made with the bolt on the left side of the valve with "RAISE" stamped vertically above it. Adjustments of the lowering speed are made with the bolt on the right side of the valve with "LOWER" stamped vertically beneath it.
10. Adjustments are made with these bolts by screwing them clockwise into the valve to reduce operating speed or by screwing them counterclockwise to increase operating speed. Adjustments should be made in small increments, 1/6 of turn or less at a time, being sure to retighten the jam nut after each adjustment.

# PARTS IDENTIFICATION



1240

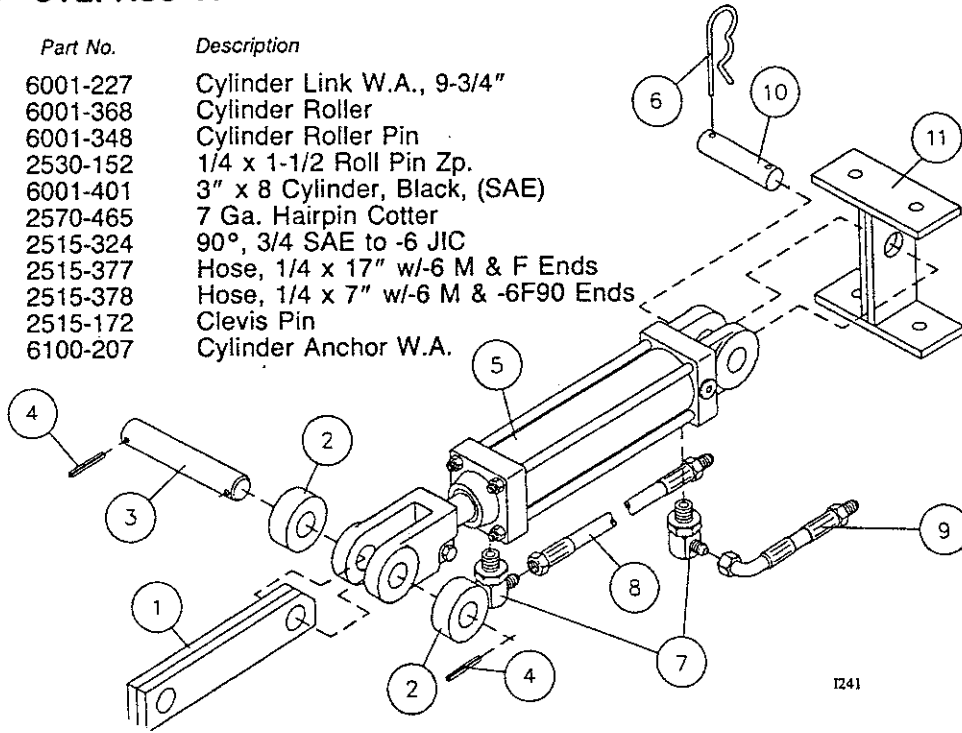
Key	Qty	Part No.	Description
1	4	2515-324	90°, 3/4 SAE to -6 JIC
2	2	2515-377	Hose, 1/4 x 17" w/-6 M&F Ends
3	2	2515-378	Hose, 1/4 x 7" w/-6M & -6F90 Ends
4	4	2515-361	Hose, 1/4 x 70" w/-6 JIC Ends (JD 750)
	4	2515-367	Hose, 1/4 x 135" w/-6 JIC Ends (15'-20')
	4	2515-371	Hose, 1/4 x 180" w/-6 JIC Ends (24')
	4	2515-373	Hose, 1/4 x 220" w/-6 JIC Ends (30')
5	1	2515-314	Adjustable Sequence Valve
6	1	6001-425	Sequence Valve Bracket (Bent)
7	2	2526-251	3/8 Std. Flatwasher Zp.
8	2	2525-251	3/8 Med. Lockwasher Zp.
9	2	2502-237	3/8 - 16x1 HHCS GR.5 Zp.
10	2	2515-366	Hose, 1/4 x 110" w/-6 JIC Ends
11	2	2515-327	Adaptor, 3/4 SAE to -6 JIC

} JD 750 only

# PARTS IDENTIFICATION

## 6001-140 3" CYL. ASS'Y.

Key	Qty.	Part No.	Description
1	1	6001-227	Cylinder Link W.A., 9-3/4"
2	2	6001-368	Cylinder Roller
3	1	6001-348	Cylinder Roller Pin
4	2	2530-152	1/4 x 1-1/2 Roll Pin Zp.
5	1	6001-401	3" x 8 Cylinder, Black, (SAE)
6	2	2570-465	7 Ga. Hairpin Cotter
7	2	2515-324	90°, 3/4 SAE to -6 JIC
8	1	2515-377	Hose, 1/4 x 17" w/-6 M & F Ends
9	1	2515-378	Hose, 1/4 x 7" w/-6 M & -6F90 Ends
10	1	2515-172	Clevis Pin
11	1	6100-207	Cylinder Anchor W.A.



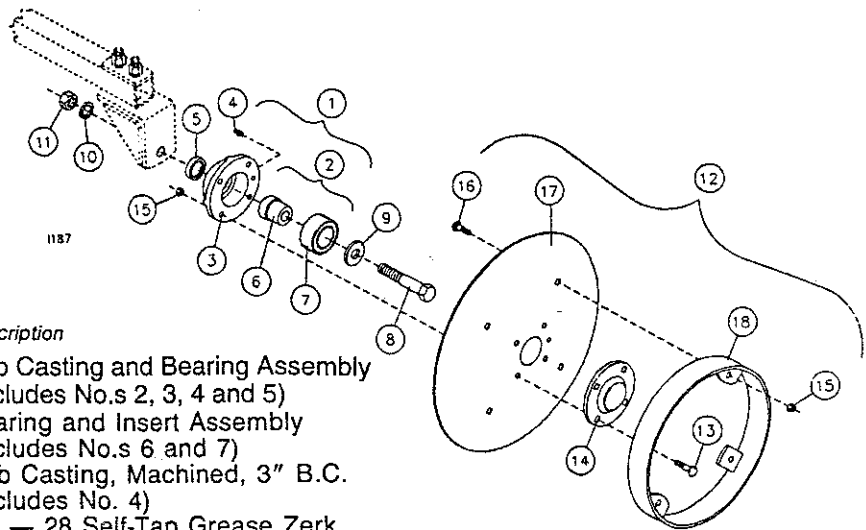
1241

## 6001-401 3 x 8 CYLINDER, SAE PORTS

2515-173 Cross Seal Kit

2515-268 Command Seal Kit

2515-489 Rockford Seal Kit

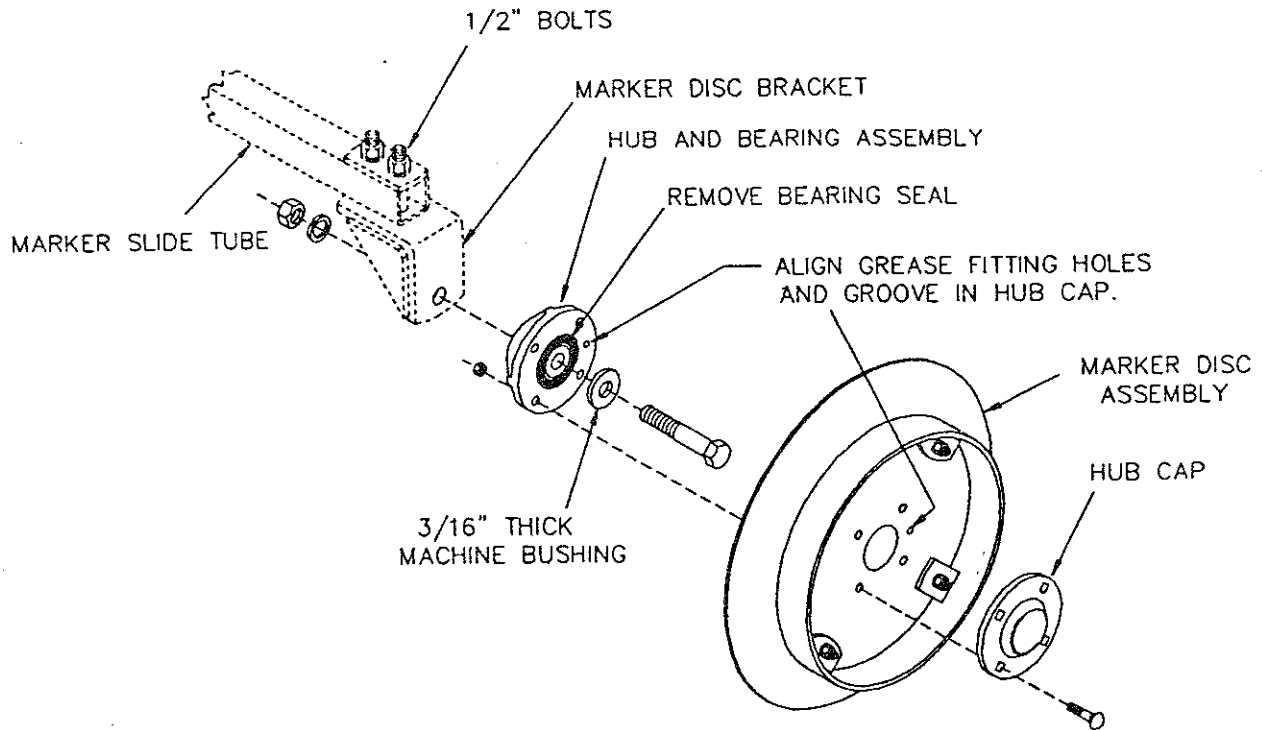


## MARKER DISC. ASSEM.

Key	Qty.	Part No.	Description
1	1	2965-128	Hub Casting and Bearing Assembly (Includes No.s 2, 3, 4 and 5)
2	1	2965-127	Bearing and Insert Assembly (Includes No.s 6 and 7)
3	1	2965-351	Hub Casting, Machined, 3" B.C. (Includes No. 4)
4	1	2533-110	1/4 — 28 Self-Tap Grease Zerk
5	1	2550-052	Seal
6	1	2570-715	Bearing Insert, Trashmaster
7	1	2570-594	Bearing, 2 Row
8	1	2502-325	5/8 — 11 x 3" HHCS Gr.5 Zp.
9	1	2527-530	1-1/2 O.D. x 21/32 I.D. x 3/16 Thk. Mach. Bush.
10	1	2525-451	5/8 Med. Lockwasher Zp.
11	1	2520-452	5/8 — 11 Hex Nut Zp.
12	1	6001-604	Marker Disc Assembly (Includes No.s 15 through 18)
	opt.	6001-610	Notched Marker Disc Assembly
13	6	2505-207	5/16 x 18 x 1-1/4" Carriage Bolt, Gr.5 Zp.
14	1	2965-352	Hub Cap Casting, Black
15	8	2520-205	5/16 — 18 Lock Hex Nut Zp.
16	4	2505-205	5/16 — 18 x 3/4" Carriage Bolt, Gr.5 Zp.
17	1	6001-491	Disc, 13-5/8" Marker Disc, Punched
	opt.	6001-495	Notched Marker Blade, Punched
18	1	6001-217	Depth Control Band W.A.

## MARKER DISC ASSEMBLY

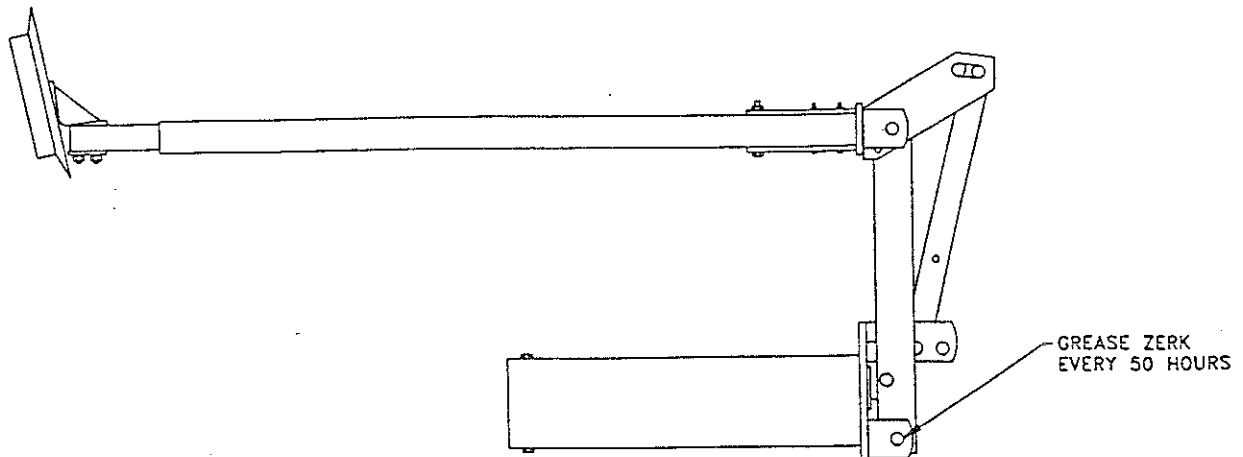
1. Before assembling marker disc assembly, remove the seal from the exposed side of the bearing on the hub and bearing assembly.
2. Assemble hub and bearing assembly to the marker disc bracket using 5/8 x 3" bolt, 3/16" thick machine bushing, and 5/8" nut and lockwasher, and tighten.
3. Assemble the marker disc assembly to the hub and bearing assembly using 5/16 x 1-1/4" carriage bolts and locknuts, and tighten.
4. Loosen the two 1/2" bolts on the outer end of the marker slide tube and adjust the marker disc brackets to desired angle and retighten.
5. Fill hub and bearing assembly with general purpose grease.



1188

## MAINTENANCE

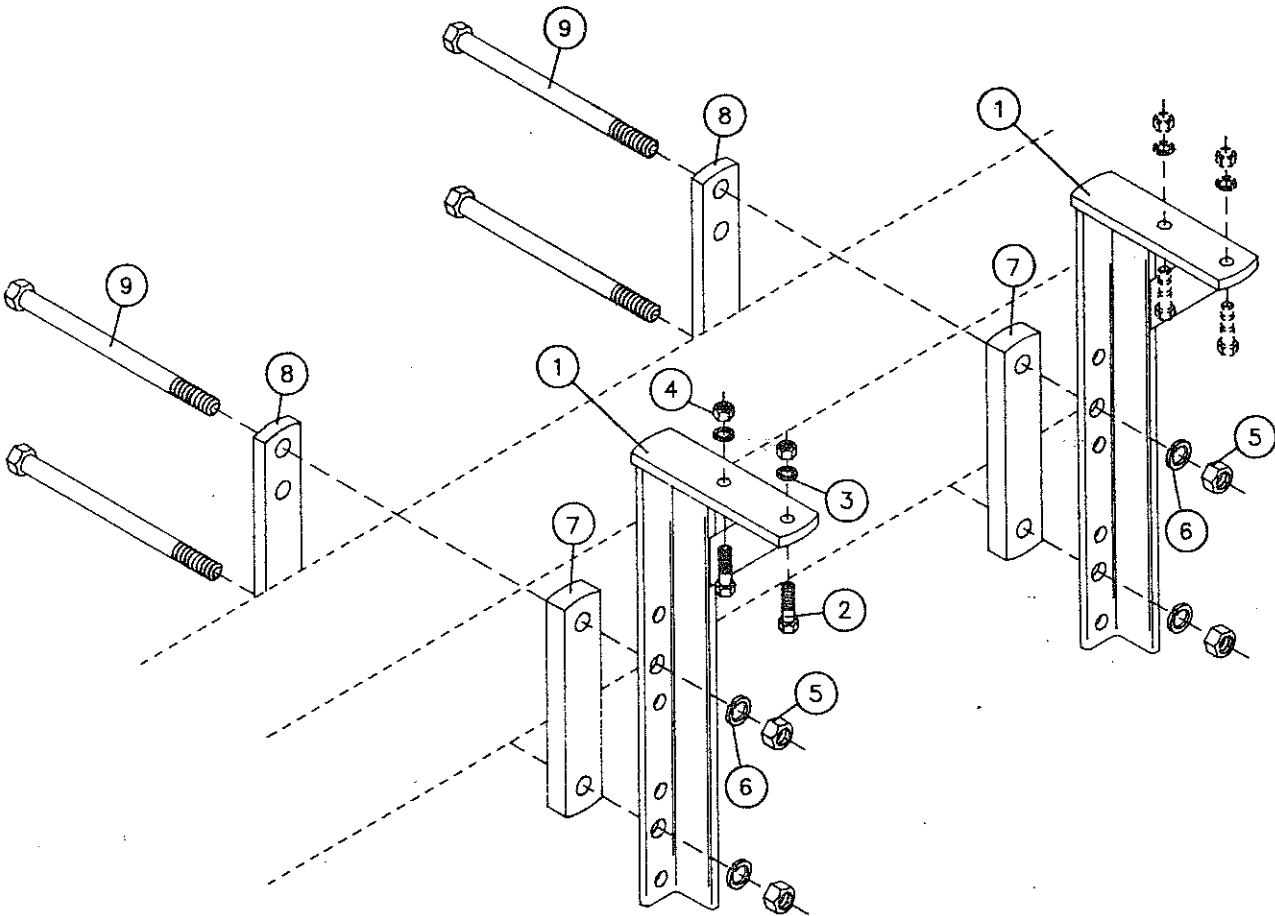
There is a grease zerk on the under side of each marker arm (See drawing.) grease every 50 hrs. Grease the hub on each marker disc assembly every 50 hrs.



# PARTS IDENTIFICATION

## 6001-022 MOUNT KIT, 15' & 20' TYE SERIES 5

Key	Qty.	Part No.	Description
1	4	6001-259	21" Mount Angle W.A.
2	4	2502-317	1/2 — 13 x 1-3/4" HHCS Gr.5 Zp.
3	4	2525-352	1/2 Med. Lockwasher Zp.
4	4	2520-352	1/2 — 13 Hex Nut Zp.
5	8	2520-504	3/4 — 10 Hex Nut Zp.
6	8	2525-501	3/4 Med. Lockwasher Zp.
7	4	6001-477	1" Spacer, 7" Bar
8	4	2970-324	Mount Strap
9	8	2502-520	3/4 — 10 x 11" HHCS Gr.5 Zp.



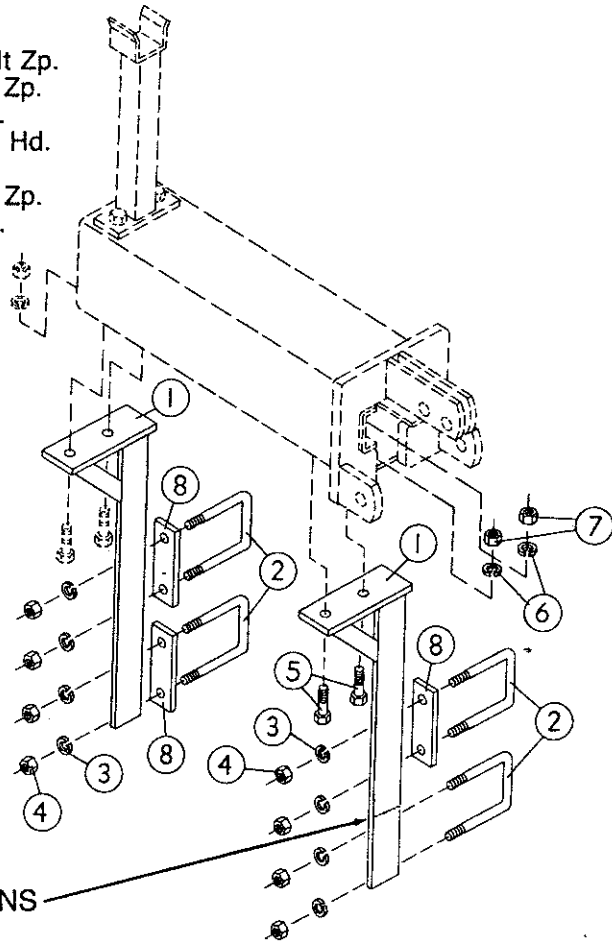


# PARTS IDENTIFICATION

## 6001-120 MOUNTING KIT (GREAT PLAINS)

Key	Qty.	Part No.	Description
1	4	6001-259	Mounting Angle, W.A.
2	8	2570-564	5/8 x 3-1/2 x 5" U-Bolt Zp.
3	16	2525-451	5/8 Med. Lockwasher Zp.
4	16	2520-452	5/8 — 11 Hex Nut Zp.
5	4	2502-317	1/2 x 13 x 1-3/4" Hex Hd. Capscrew Gr. 5 Zp.
6	4	2525-352	1/2 Med. Lockwasher Zp.
7	4	2520-352	1/2 — 13 Hex Nut Zp.
8	8	6001-445	Mounting Spacer

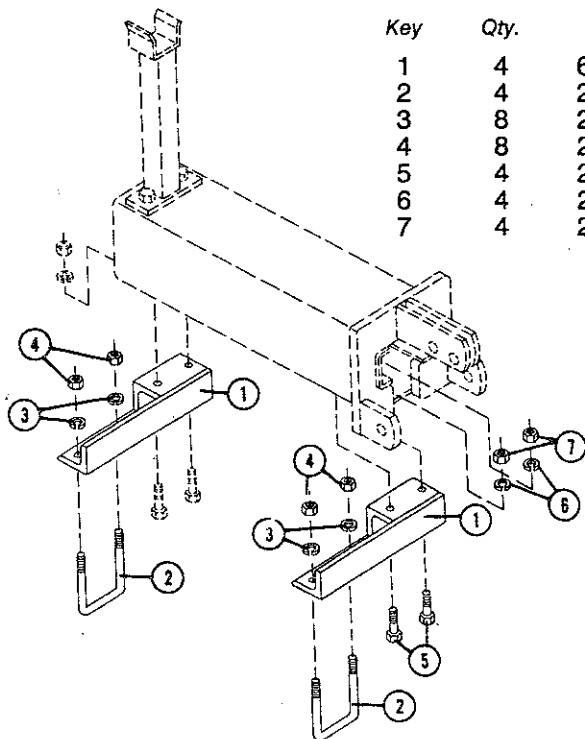
NOTE: Part No. 6001-445, Mounting Spacer only used on drills with 7" or 10" spacings. Also need to saw off bottom end of 6001-259 to obtain full range of seeding rates.



SAW OFF FOR CERTAIN APPLICATIONS

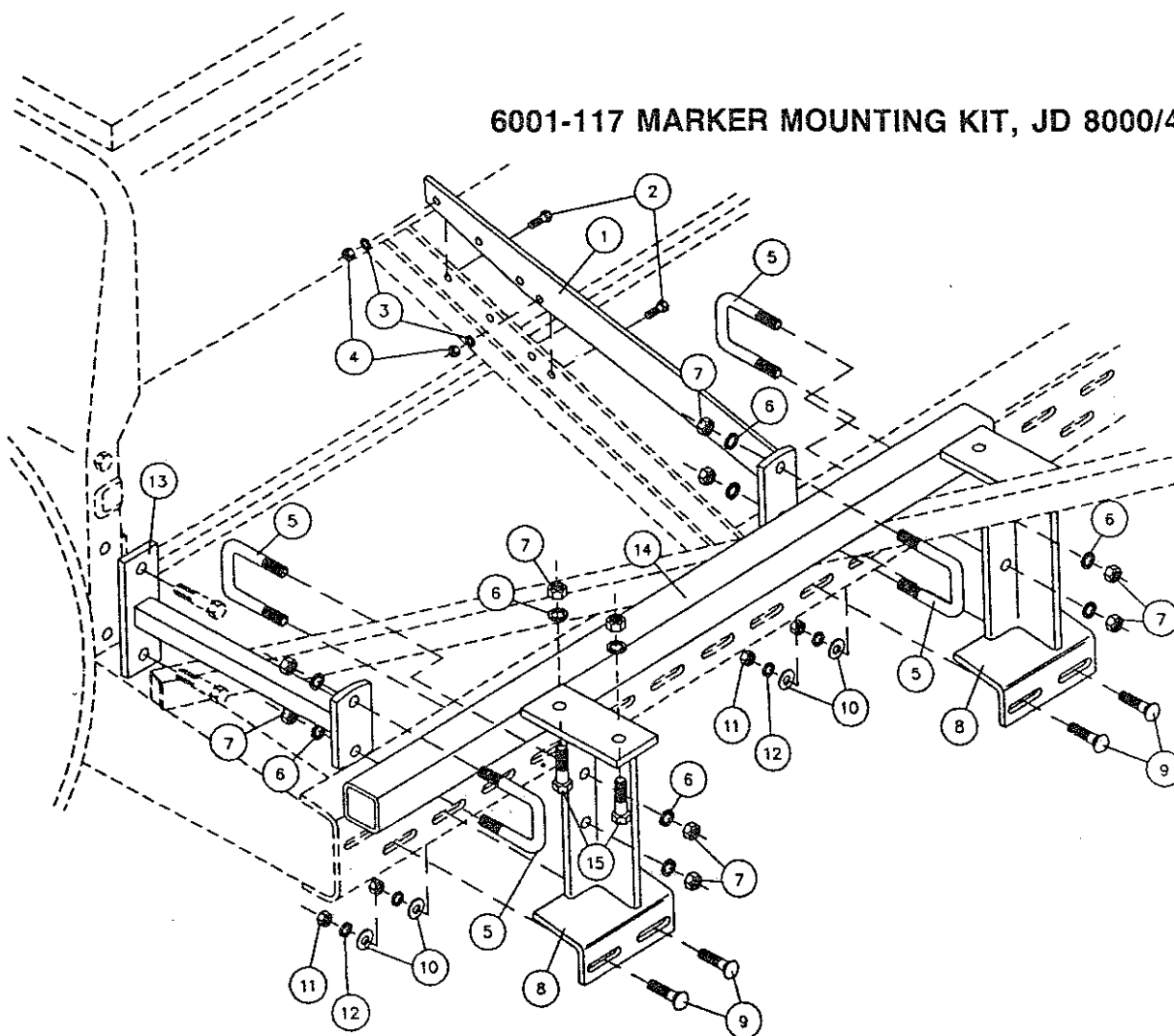
## 6001-118 MOUNTING KIT (M&W, MARLISS & TYE)

Key	Qty.	Part No.	Description
1	4	6001-232	Mounting Bracket W.A.
2	4	2570-564	5/8 x 3 1/2 x 5 U-Bolt Zp.
3	8	2525-451	5/8 Med. Lockwasher Zp.
4	8	2520-452	5/8 - 11 Hex Nut Zp.
5	4	2502-317	1/2 - 13 1 3/4" Hex Hd. Capscrew Gr.5 Zp.
6	4	2525-352	1/2 Med. Lockwasher Zp.
7	4	2520-352	1/2 - 13 Hex Nut Zp.



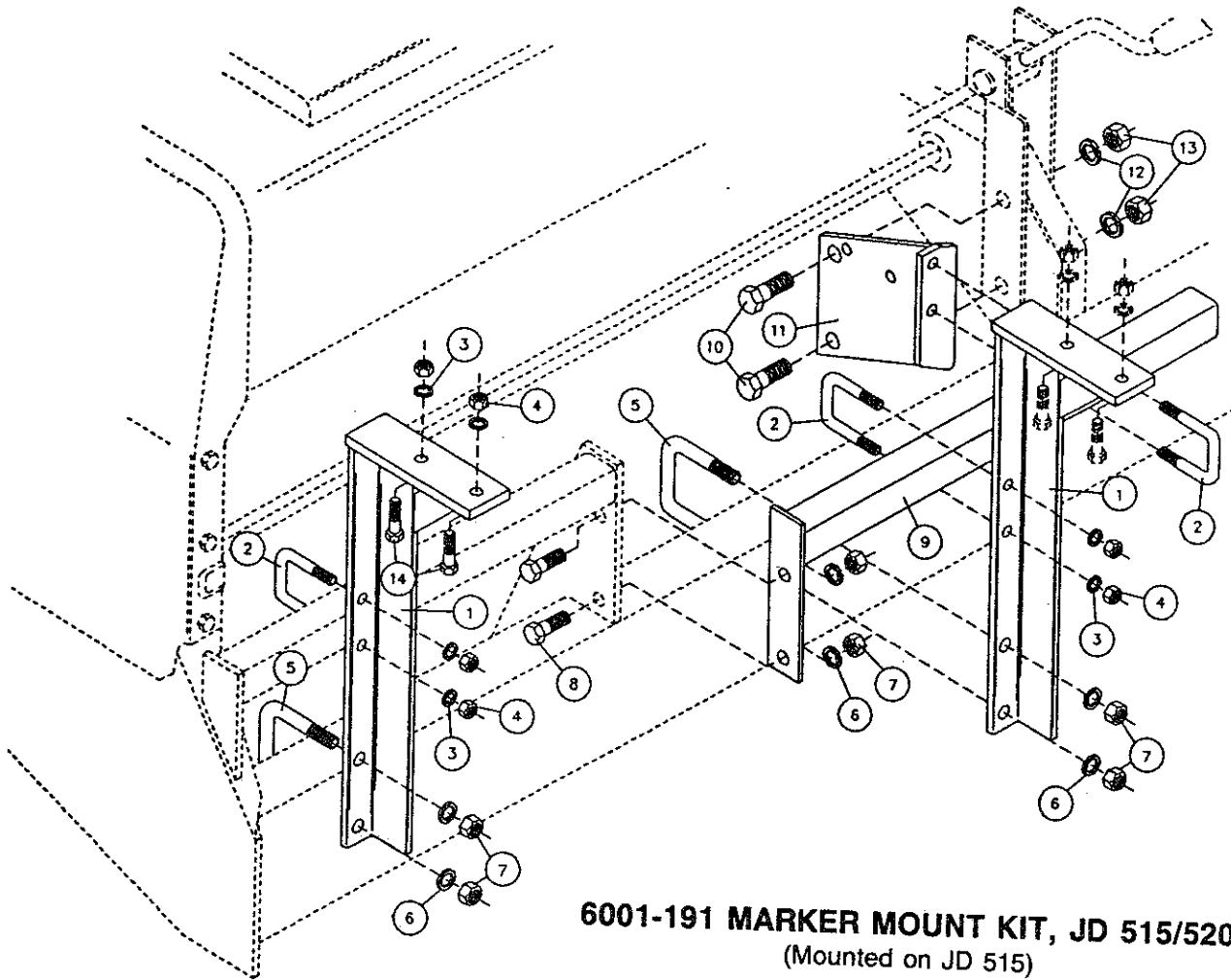
# PARTS IDENTIFICATION

## 6001-117 MARKER MOUNTING KIT, JD 8000/450



Key	Qty.	Part No.	Description
1	2	6001-263	Inner Brace, JD 8000
2	4	2502-198	5/16—18 x 1" HHCS Gr.5 Zp.
3	4	2525-201	5/16 Med. Lockwasher Zp.
4	4	2520-201	5/16—18 Hex Nut Zp.
5	6	2570-565	1/2 x 2 x 3 U-Bolt Zp.
6	20	2525-352	1/2 Med. Lockwasher Zp.
7	20	2520-352	1/2—13 Hex Nut Zp.
8	4	6001-265	Marker Mounting Brkt., JD 8000
9	8	2505-302	7/16—14 x 1 1/2" Car. Blt. Gr.5 Zp.
10	8	2526-301	7/16 Std. Flatwasher Zp.
11	8	2520-303	7/16—14 Hex Nut Zp.
12	8	2525-301	7/16 Med. Lockwasher Zp.
13	2	6001-264	Outer Brace, JD 8000
14	2	6001-471	Mounting Brace, 36"
15	4	2502-317	1/2—13 x 1 3/4" HHCS Gr.5 Zp.

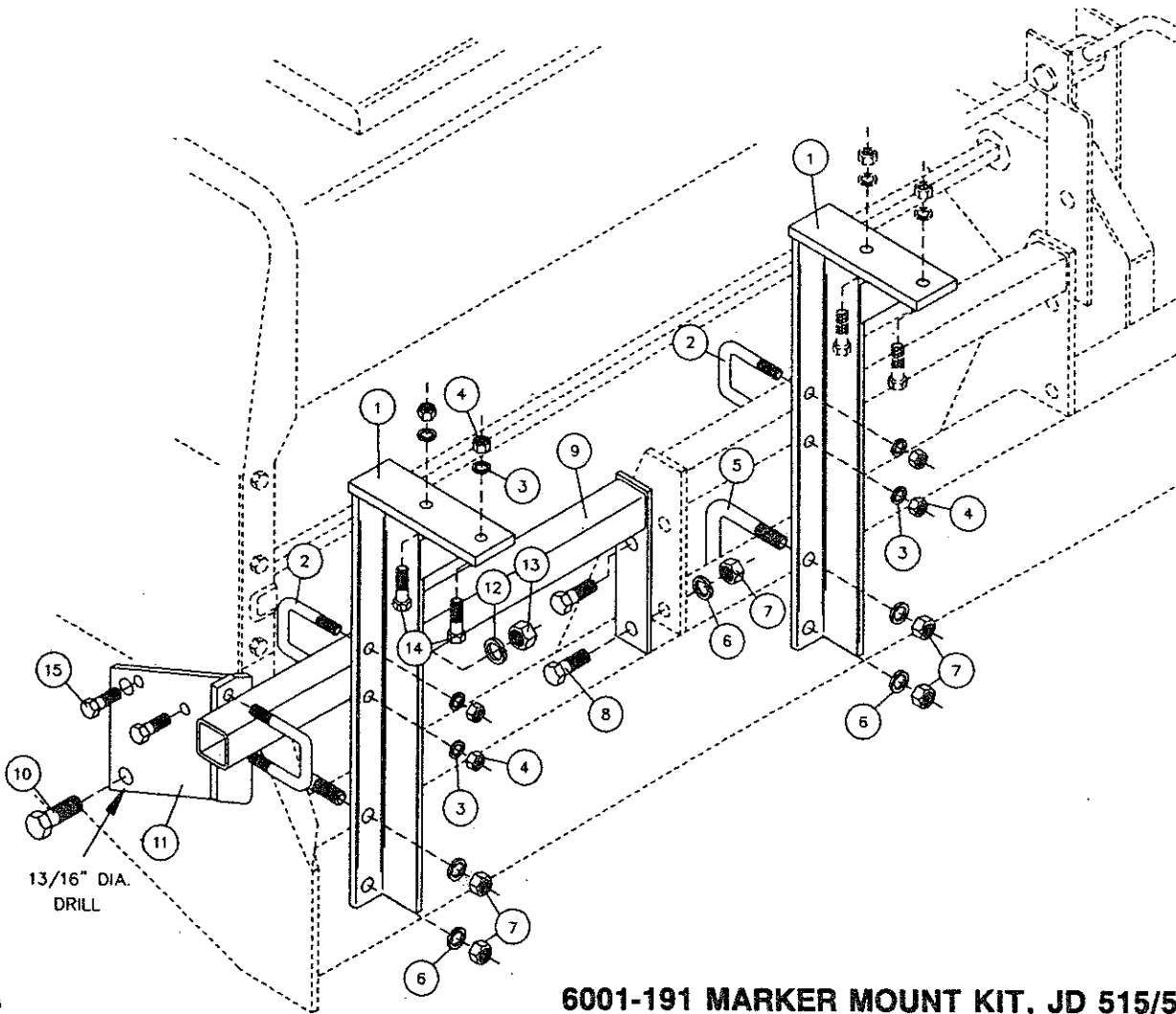
# PARTS IDENTIFICATION



**6001-191 MARKER MOUNT KIT, JD 515/520**  
(Mounted on JD 515)

Key	Qty.	Part No.	Description
1	4	6001-261	Mount Angle W.A., JD 515 & 520
2	6	2570-565	1/2 x 2 x 3 U-Bolt Zp.
3	20	2525-352	1/2 Med. Lockwasher Zp.
4	20	2520-352	1/2—13 Hex Nut Zp.
5	4	2570-602	5/8—11 x 3 x 4 1/2 U-Bolt Zp.
6	12	2525-451	5/8 Med. Lockwasher Zp.
7	12	2520-452	5/8—11 Hex Nut Zp.
8	4	2502-318	5/8—11 x 1 1/2" HHCS Gr.2 Zp.
9	2	6001-262	2 x 2 Bar W.A., JD 515 & 520
10	4	2502-503	3/4 - 10 x 2" HHCS Gr. 5 Zp.
11	1	6001-455	2 x 2 Bar Brace, JD 515 & 520 (Shown)
12	1	6001-460	L.H. 2 x 2 Brace, JD 515 & 520
13	4	2525-501	3/4 Med. Lockwasher Zp.
14	4	2520-504	3/4—10 Hex Nut Zp.
15	4	2502-317	1/2—13 x 1 3/4" HHCS Gr.5 Zp.
		2502-294	1/2—13 x 1 1/2" HHCS Gr.5 Zp.

# PARTS IDENTIFICATION



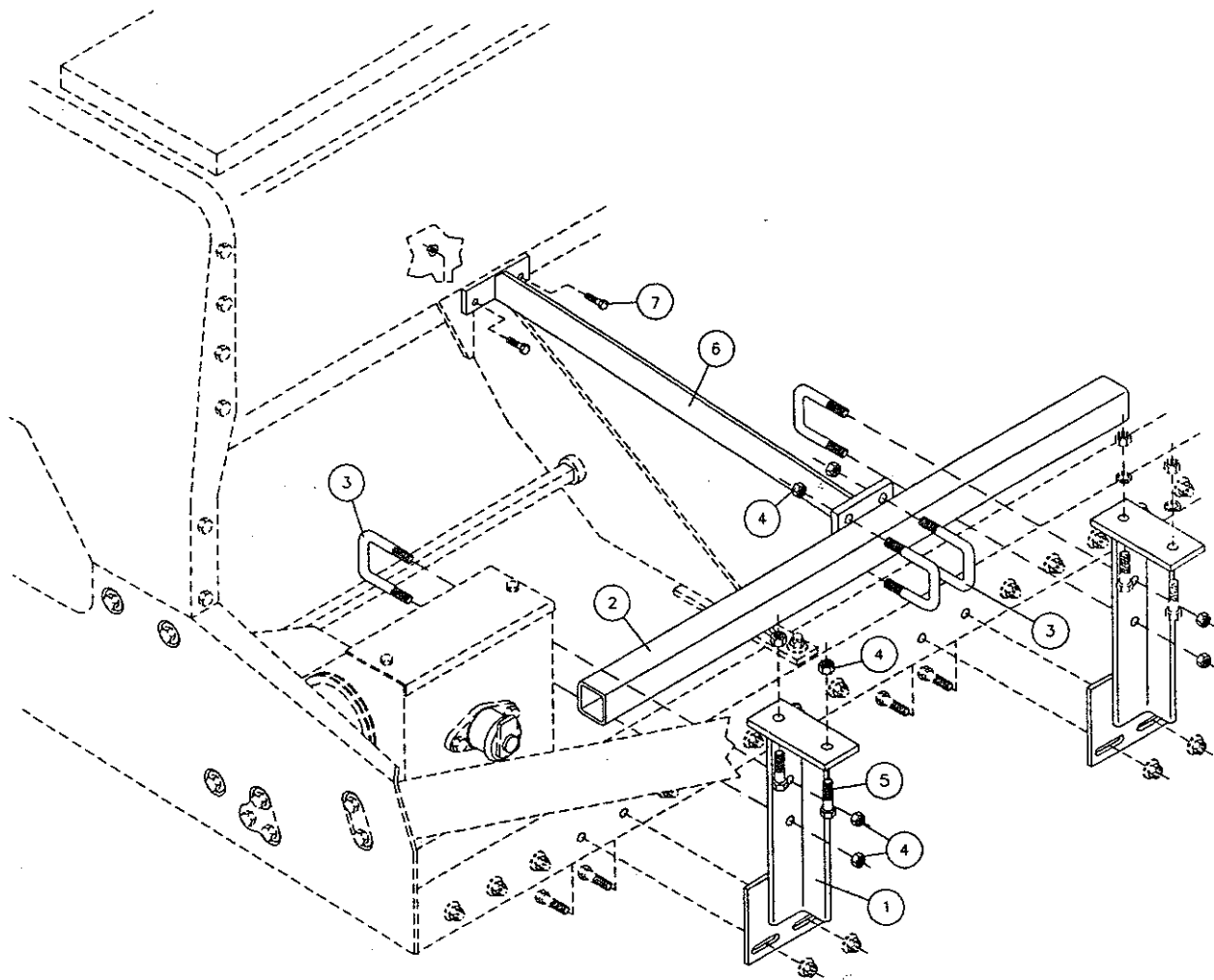
**6001-191 MARKER MOUNT KIT, JD 515/520**  
(Mounted on JD 520)

Key	Qty.	Part No.	Description
1	4	6001-261	Mount Angle W.A., JD 515 & 520
2	6	2570-565	1/2 x 2 x 3 U-Bolt Zp.
3	20	2525-352	1/2 Med. Lockwasher Zp.
4	20	2520-352	1/2—13 Hex Nut Zp.
5	4	2570-602	5/8—11 x 3 x 4 1/2 U-Bolt Zp.
6	12	2525-451	5/8 Med. Lockwasher Zp.
7	12	2520-452	5/8—11 Hex Nut Zp.
8	4	2502-318	5/8—11 x 1 1/2" HHCS Gr.2 Zp.
9	2	6001-262	2 x 2 Bar W.A., JD 515 & 520
10	4	2502-501	3/4—10 x 1 1/2" HHCS Gr.2 Zp.
11	1	6001-455	2 x 2 Bar Brace, JD 515 & 520 (Shown)
	1	6001-460	L.H. 2 x 2 Brace, JD 515 & 520
12	4	2525-501	3/4 Med. Lockwasher Zp.
13	4	2520-504	3/4—10 Hex Nut Zp.
14	4	2502-317	1/2—13 x 1 3/4" HHCS Gr.5 Zp.
15	4	2502-294	1/2—13 x 1 1/2" HHCS Gr.5 Zp.

# PARTS IDENTIFICATION

## -024 MOUNTING KIT, DEERE 9300 SERIES

Qty.	Part No.	Description
4	6001-271	Mounting Bracket W.A., JD 9300
2	6001-471	Mounting Brace, 36"
8	2570-465	1/2 x 2 x 3 U-bolt Zp.
20	2520-357	1/2 — 13 Lock Hex Nut Zp.
4	2502-317	1/2 — 13 x 1-3/4 HHCS Gr.5 Zp.
2	6001-272	Brace W.A., JD 9300
4	2502-198	5/16 — 18 x 1 HHCS Gr.5 Zp.

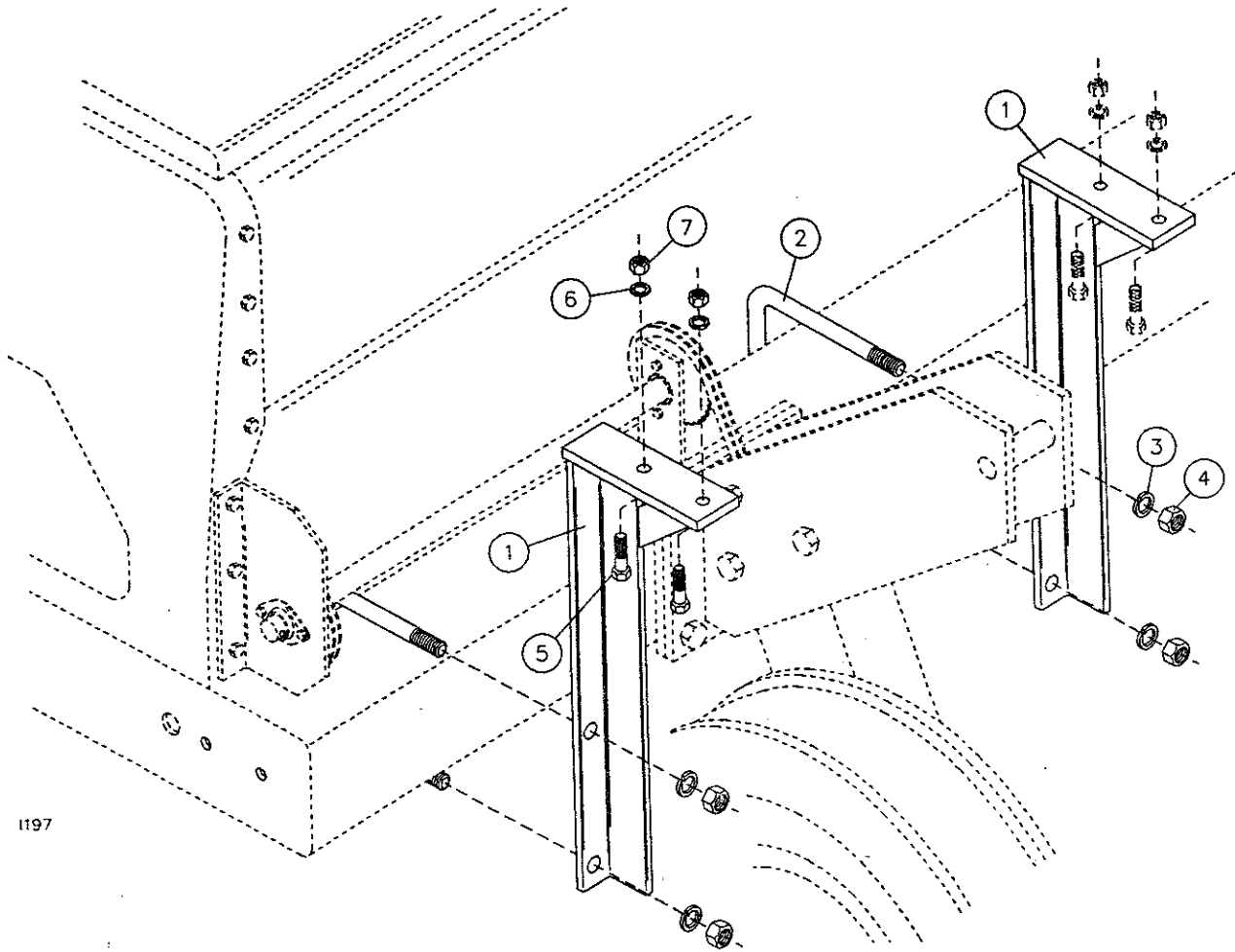


1185

# PARTS IDENTIFICATION

## 6001-018 MOUNTING KIT, JD 455 DRILLS

Key	Qty.	Part No.	Description
1	4	6001-274	Mount Angle, J.D. 455, W.A.
2	4	2570-064	3/4 x 6 x 8 U-Bolt, Zp.
3	8	2525-501	3/4 Med. Lockwasher Zp.
4	8	2520-504	3/4—10 Hex Nut, Zp.
5	4	2502-317	1/2—13 x 1-3/4" HHCS Gr.5 Zp.
6	4	2525-352	1/2 Med. Lockwasher, Zp.
7	4	2520-352	1/2—13 Hex Nut, Zp.

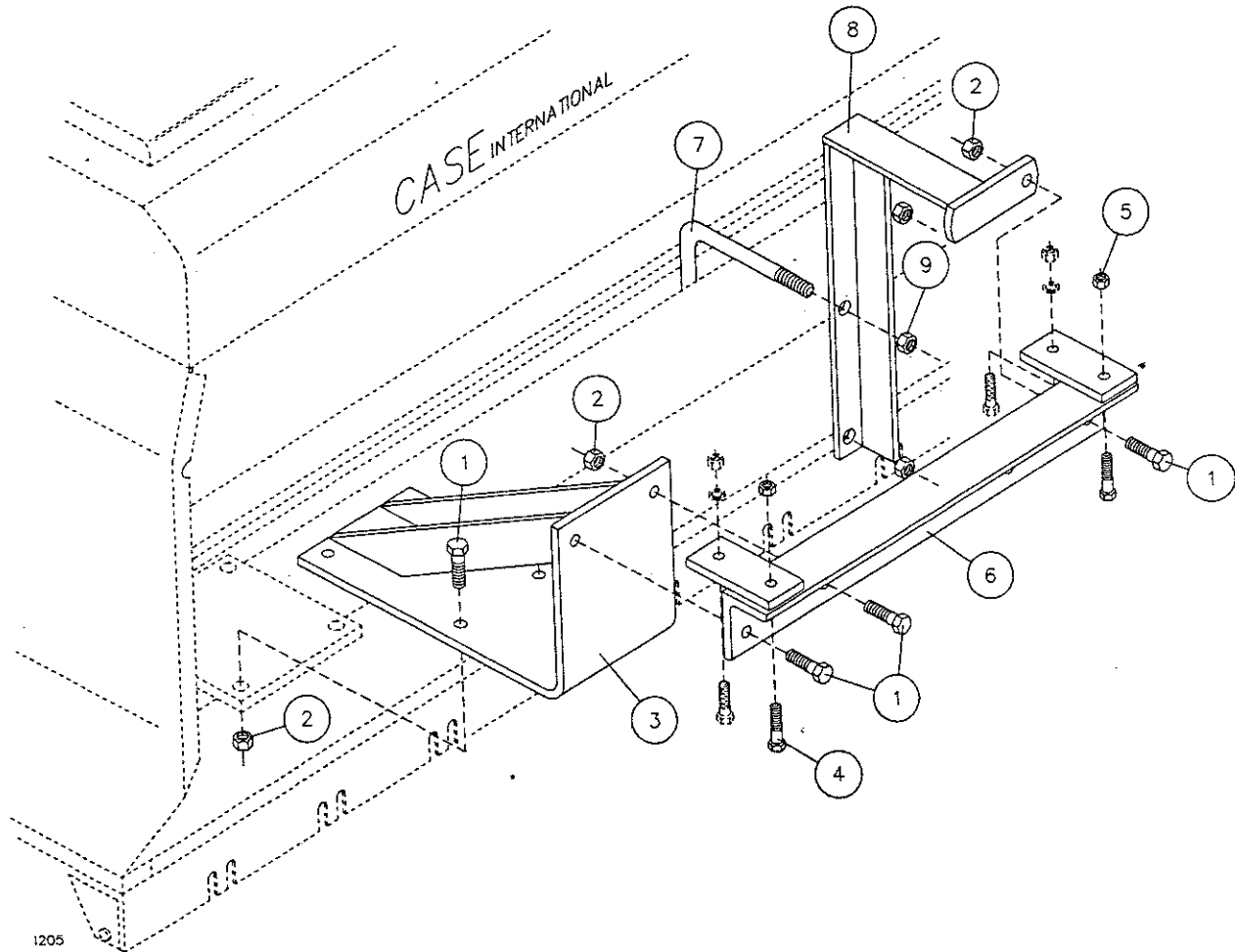


1197

# PARTS IDENTIFICATION

## 6001-042 MOUNTING KIT, CASE IH 5500 DRILL

Key	Qty.	Part No.	Description
1	12	2502-331	5/8—11 x 1-3/4" HHCS Gr.5 Zp.
2	12	2520-459	5/8—11 Lock Hex Nut Zp.
3	2	6001-275	Mounting Bracket W.A., IH 5500
4	4	2502-351	1/2—13 x 2" HHCS Gr.5 Zp.
5	4	2520-357	1/2—13 Lock Hex Nut Zp.
6	2	6001-276	Mount Angle, W.A., Case IH 5500
7	2	2570-478	3/4 x 7 x 9 U-bolt, Zp.
8	2	6001-277	Mounting Brace WA, IH 5500
9	4	2520-515	3/4—10 Lock Hex Nut Zp.

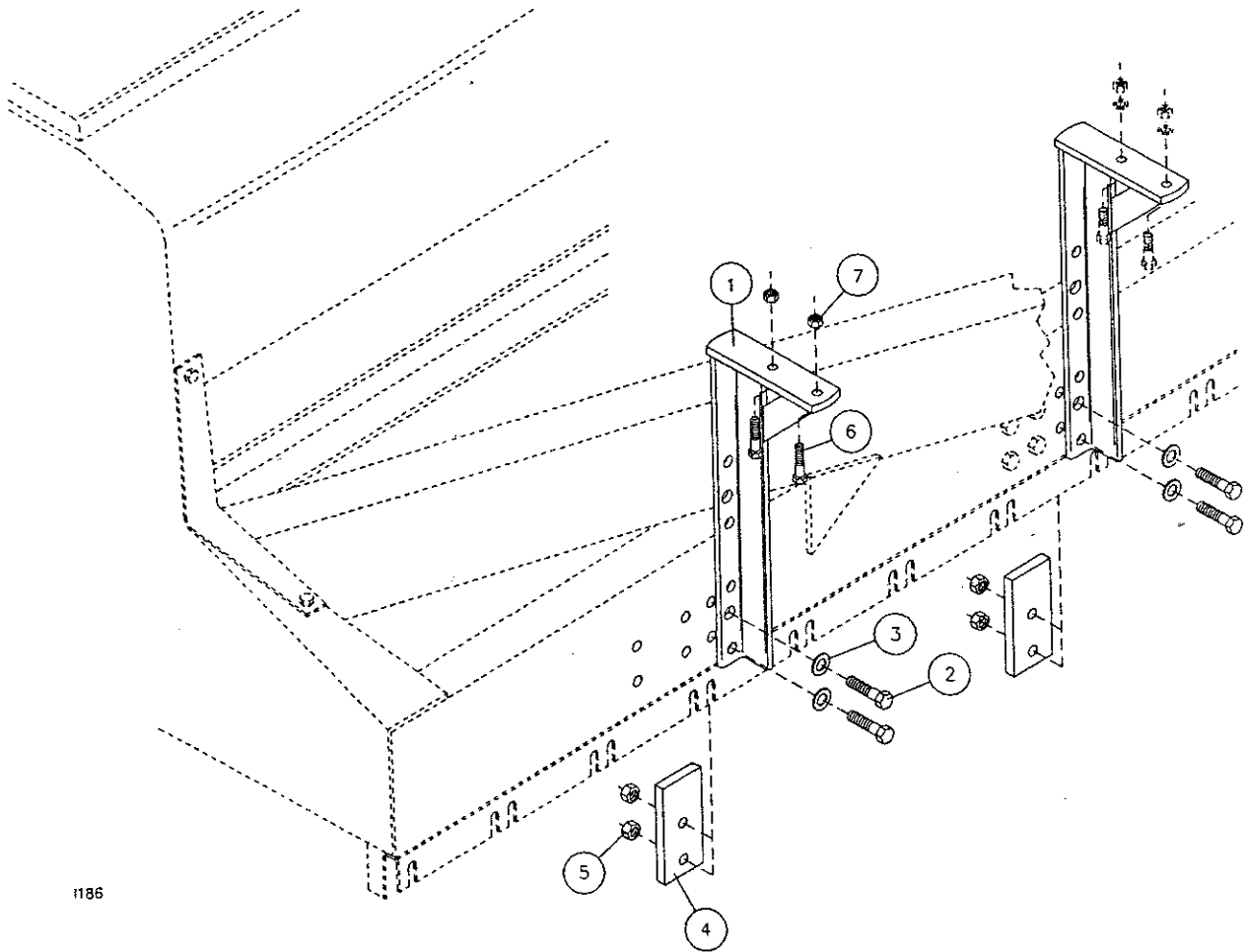


**NOTE:** Shown on right hand drill.

# PARTS IDENTIFICATION

## 6001-023 MOUNTING KIT, CASE IH 6200 DRILLS

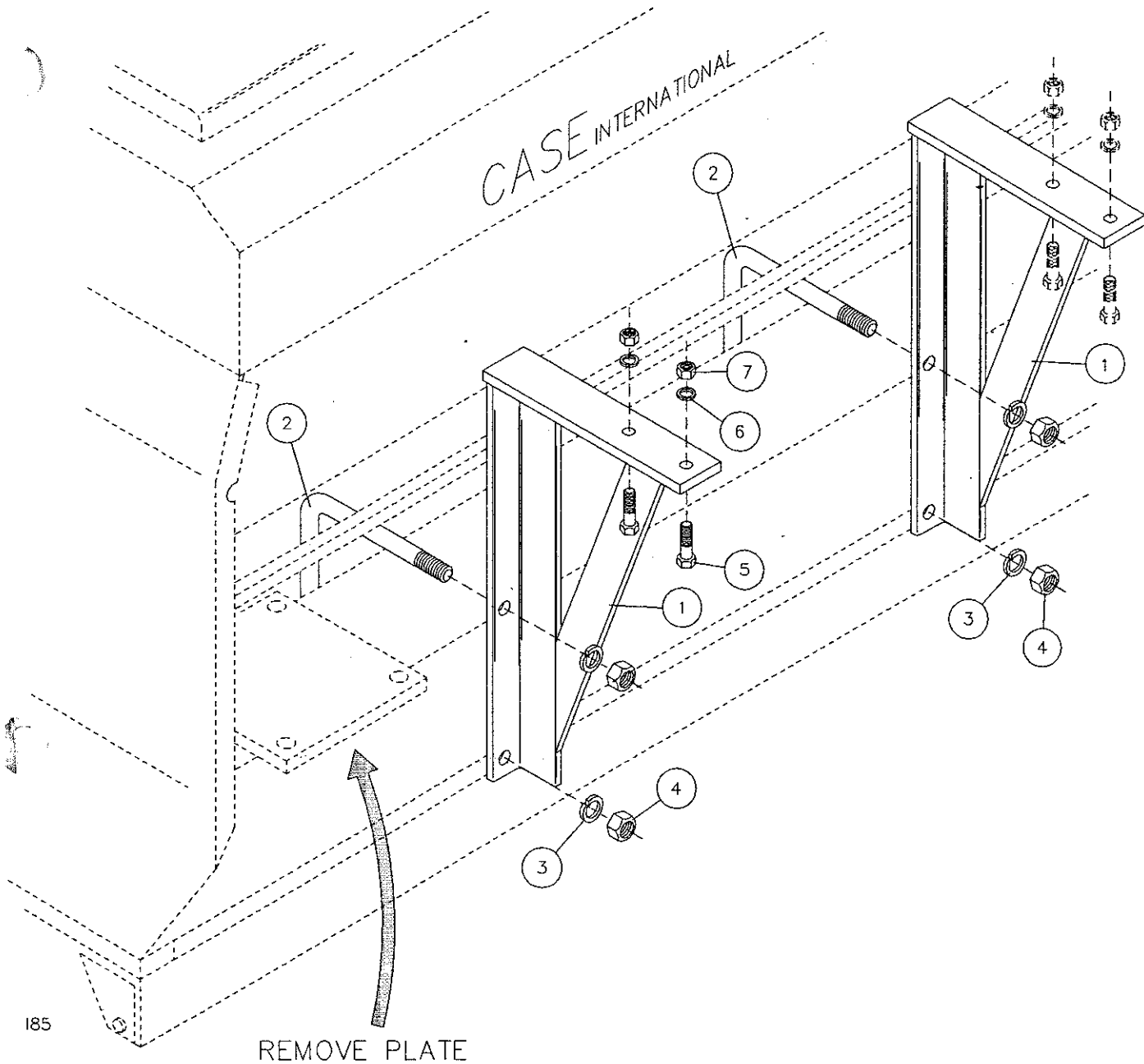
Key	Qty.	Part No.	Description
1	4	6001-259	21" Mount Angle W.A.
2	8	2502-332	5/8 — 11 x 2-1/4 HHCS Gr.5 Zp.
3	8	2526-451	5/8 Std. Flatwasher Zp.
4	4	6001-490	Backing Plate, IH 6200
5	8	2520-459	5/8 — 11 Hex Locknut Zp.
6	4	2502-317	1/2 — 13 x 1-3/4 HHCS Gr.5 Zp.
7	4	2520-357	1/2 — 13 Hex Locknut Zp.



1185



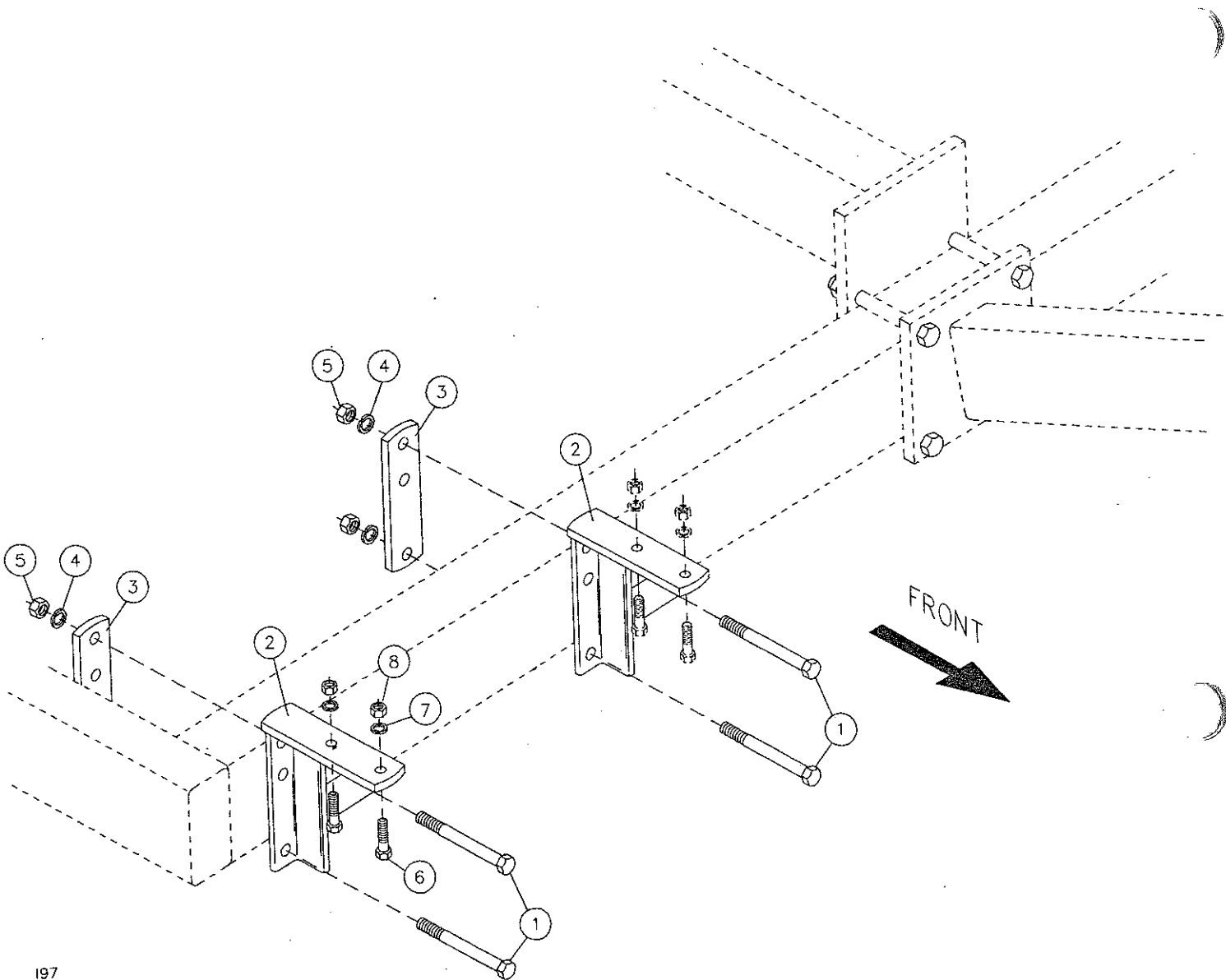
# PARTS IDENTIFICATION



## 6001-195 MARKER MOUNT KIT, CASE IH 5200/5400

Key	Qty.	Part No.	Description
1	2	6001-266	R.H. Marker Mount W.A., IH 5200 (Shown)
		6001-267	L.H. Marker Mount W.A., IH 5200
2	4	2570-478	3/4 x 7 x 9 U-Bolt, Zp.
3	8	2525-501	3/4 Med. Lockwasher Zp.
4	8	2520-504	3/4—10 Hex Nut Zp.
5	4	2502-317	1/2—13 x 1 3/4" HHCS Gr.5 Zp.
6	4	2525-352	1/2 Med. Lockwasher Zp.
7	4	2520-352	1/2—13 Hex Nut Zp.

# PARTS IDENTIFICATION



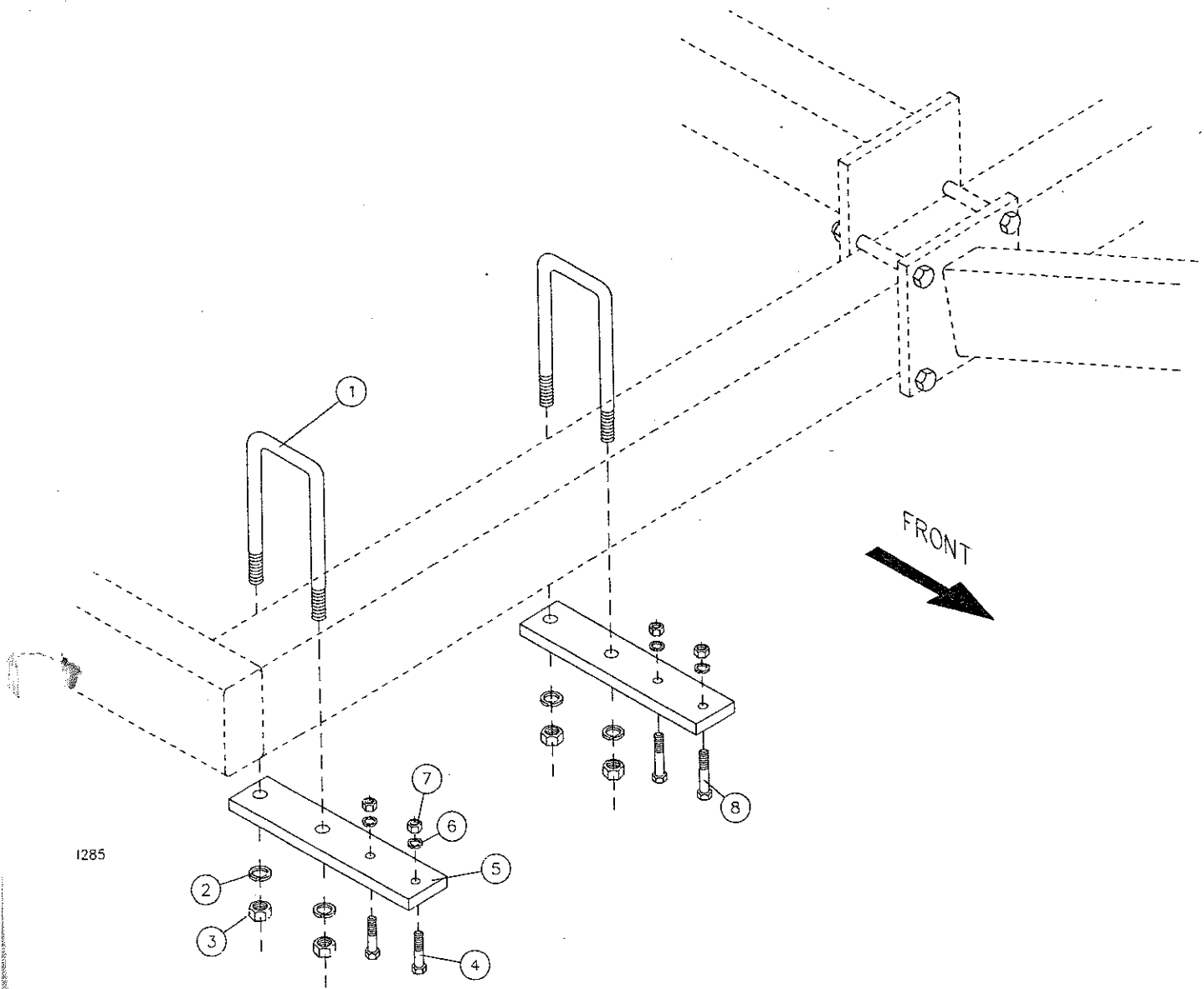
197

## 6001-198 MARKER MOUNTING KIT, JD 750, 30FT MARKERS

**NOTE:** May also be used on 4 x 4 toolbar.

Key	Qty.	Part No.	Description
1	8	2502-335	5/8—11 x 6" HHCS Gr.5 Zp.
2	4	6001-268	Mounting Angle W.A., JD 750
3	4	6001-470	Clamp Plate, JD 750
4	8	2525-451	5/8 Med. Lockwasher Zp.
5	8	2520-452	5/8—11 Hex Nut Zp.
6	4	2502-317	1/2—13 x 1 3/4" HHCS Gr.5 Zp.
7	4	2525-352	1/2 Med. Lockwasher Zp.
8	4	2520-352	1/2—13 Hex Nut Zp.

# PARTS IDENTIFICATION

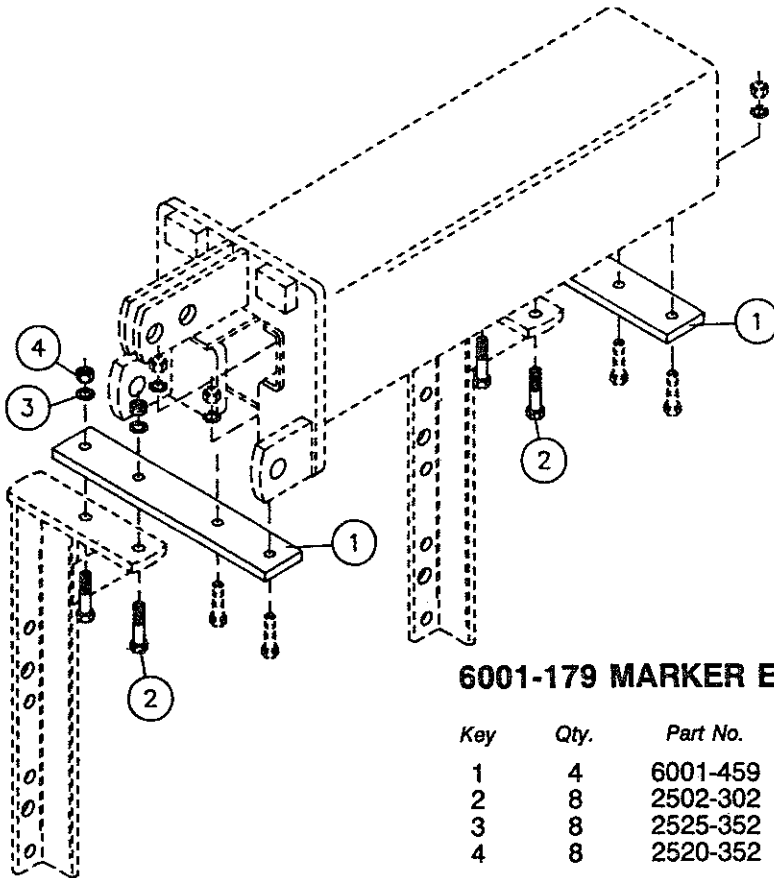


## 6001-028 MARKER MOUNTING KIT, JD 750, 15FT & 20FT

Key	Qty	Part No.	Description
1	4	2570-733	3/4 x 4 x 8 U-Bolt ZP
2	8	2525-501	3/4" Lockwasher ZP
3	8	2520-504	3/4 - 10 Hex Nut ZP
4	4	2502-351	1/2 - 13 x 2 HHCS Gr. 5 ZP
5	4	6001-416	Mounting Plate, JD 750
6	8	2525-352	1/2" Lockwasher ZP
7	8	2520-352	1/2 - 13 Hex Nut ZP
8	4	2502-296	1/2 - 13 x 2 1/2 HHCS Gr. 5 ZP

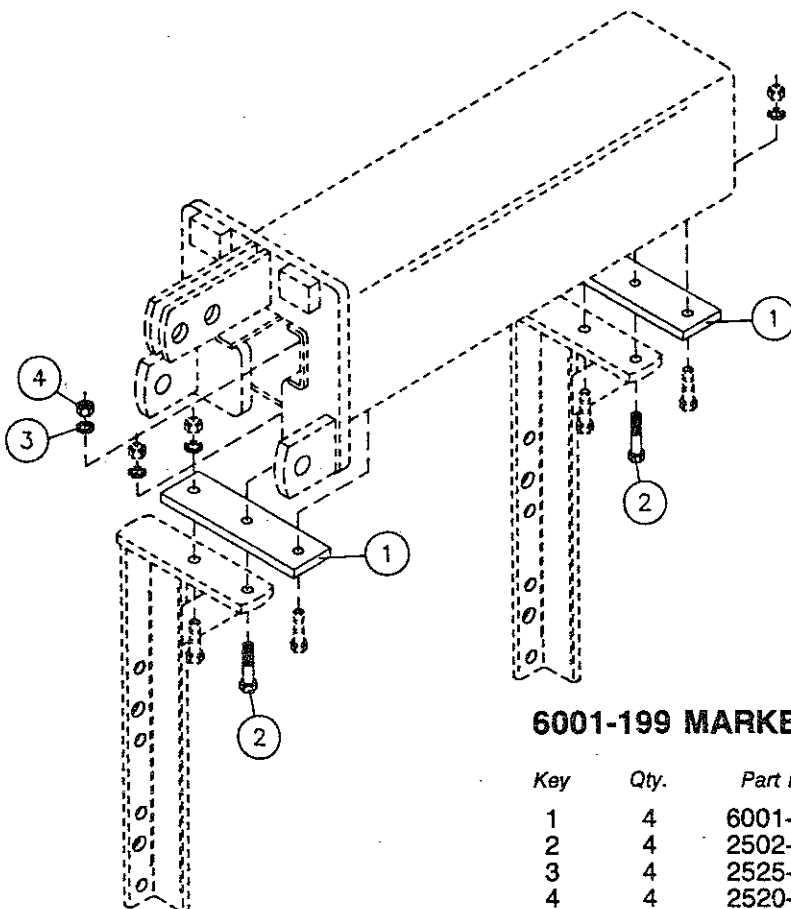
# MARKER EXTENSION KITS

(for use with grass seeder attachments)



## 6001-179 MARKER EXTENSION KIT, GREAT PLAINS

Key	Qty.	Part No.	Description
1	4	6001-459	Marker Extension Plate, Great Plains
2	8	2502-302	1/2—13 x 2" HHCS Gr.2 Zp.
3	8	2525-352	1/2 Med. Lockwasher Zp.
4	8	2520-352	1/2—13 Hex Nut Zp.



## 6001-199 MARKER EXTENSION KIT, JD 515/520

Key	Qty.	Part No.	Description
1	4	6001-476	Marker Extension, JD
2	4	2502-296	1/2—13 x 2 1/2" HHC
3	4	2525-352	1/2 Med. Lockwasher
4	4	2520-352	1/2—13 Hex Nut Zp.

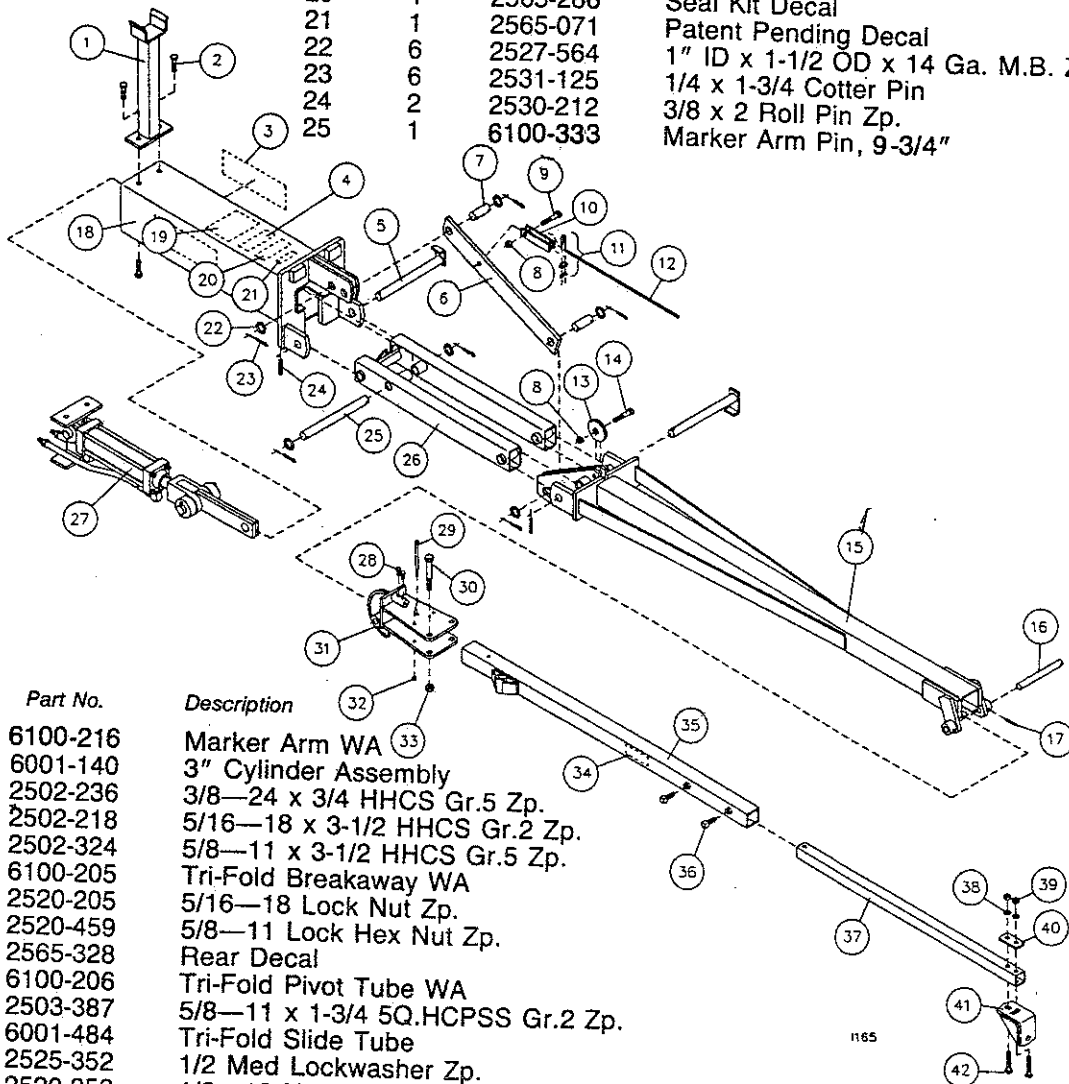
# TROUBLESHOOTING

<i>Problem</i>	<i>Cause</i>	<i>Solution</i>
Markers do not function correctly	Markers raise and lower voluntarily	Check tractor hydraulic system
	Markers do not raise or lower	Purge air from hydraulic system see page 10 Hydraulic cylinder failure, repair as necessary Check sequence valve for dirt or damage
	Blade not moving sufficient dirt	Adjust angle of blade to be more aggressive Use notched marker blade, 6001-495 6100-610 w/depth band assy. Reverse blades on hubs to push dirt out.
Both markers activate at same time	Sequence valve not operating	Check for dirt in spool or replace sequence valve
Marker blade digging too much dirt	Blade set at incorrect angle	Adjust angle of blade to be less aggressive

# PARTS IDENTIFICATION

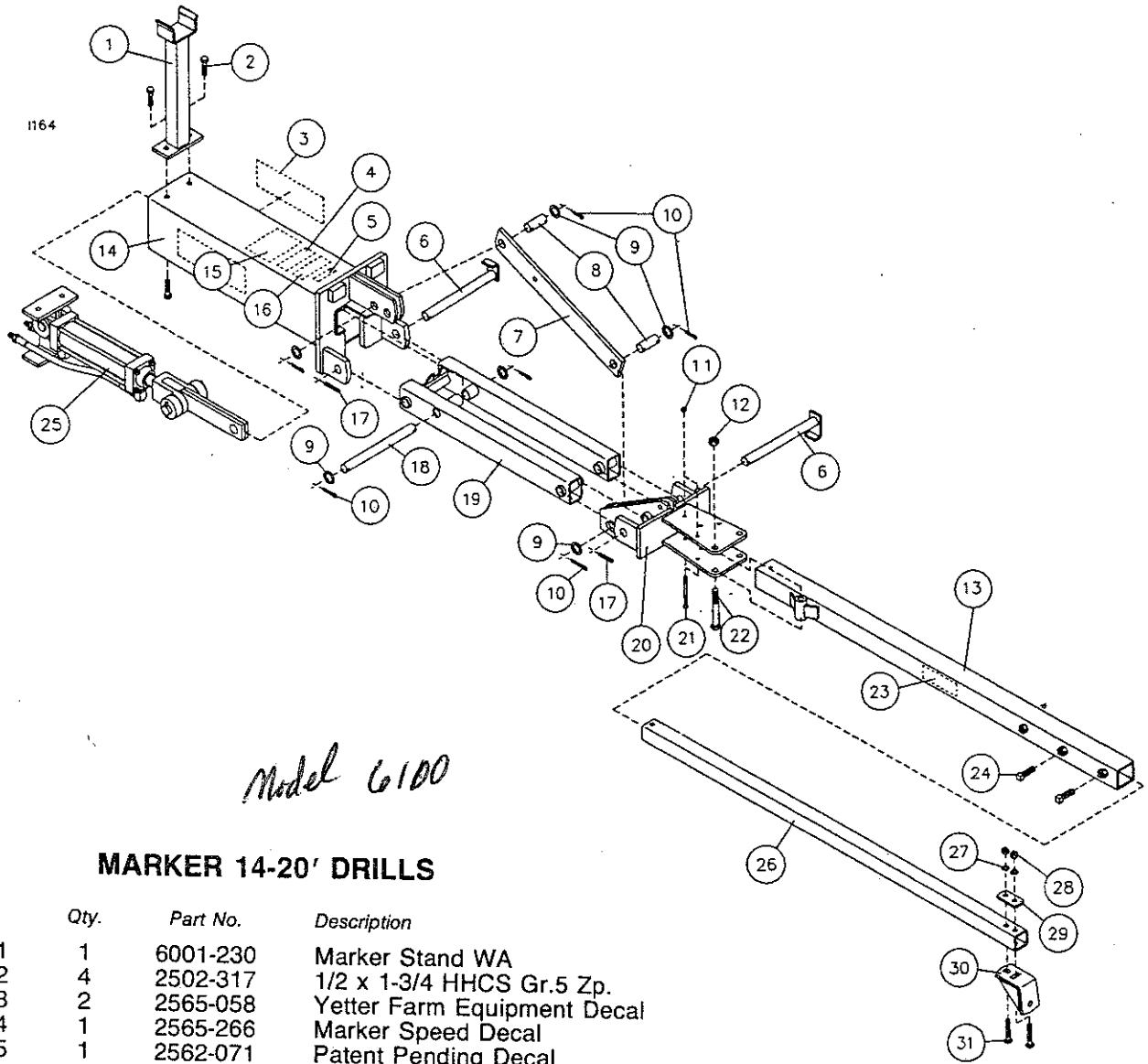
## 3-FOLD MARKER 24' & 30' DRILLS

Key	Qty.	Part No.	Description
1	1	6001-230	Marker Stand WA
2	4	2502-317	1/2—13 x 1-3/4" HHCS Gr.5 Zp.
3	2	2565-058	Yetter Farm Equipment Decal
4	1	2565-266	Marker Speed Decal
5	2	6001-224	Pivot Pin WA, Zp.
6	1	6001-420	Tri-Fold Pivot Link
7	2	6001-347	Link Pin, Zp.
8	2	2520-357	1/2—13 Lock Hex Nut Zp.
9	1	2502-302	1/2—13 x 2" HHCS Gr.2 Zp.
10	1	6001-216	Cable Yoke WA
11	1	2570-134	Cable Clamp
12	1	6001-441	Cable, 1/4" x 91" (24' Drills)
13	1	6001-424	Cable, 1/4" x 113" (30' Drills)
14	1	2570-081	Cable Pulley
15	1	2502-296	1/2—13 x 2-1/2 HHCS Gr.5 Zp.
16	1	6100-203	24' Mid-Arm WA
17	1	6100-204	30' Mid-Arm WA
18	1	6100-314	Pivot Pin Zp.
19	1	2530-152	1/4 x 1-1/2 Roll Pin Zp.
20	1	6001-257	Marker Base WA
21	1	2565-175	Caution Decal for Markers
22	1	2565-286	Seal Kit Decal
23	1	2565-071	Patent Pending Decal
24	6	2527-564	1" ID x 1-1/2 OD x 14 Ga. M.B. Zp.
25	6	2531-125	1/4 x 1-3/4 Cotter Pin
26	2	2530-212	3/8 x 2 Roll Pin Zp.
27	1	6100-333	Marker Arm Pin, 9-3/4"



Key	Qty.	Part No.	Description
26	1	6100-216	Marker Arm WA
27	1	6001-140	3" Cylinder Assembly
28	2	2502-236	3/8—24 x 3/4 HHCS Gr.5 Zp.
29	2	2502-218	5/16—18 x 3-1/2 HHCS Gr.2 Zp.
30	1	2502-324	5/8—11 x 3-1/2 HHCS Gr.5 Zp.
31	1	6100-205	Tri-Fold Breakaway WA
32	2	2520-205	5/16—18 Lock Nut Zp.
33	1	2520-459	5/8—11 Lock Hex Nut Zp.
34	1	2565-328	Rear Decal
35	1	6100-206	Tri-Fold Pivot Tube WA
36	2	2503-387	5/8—11 x 1-3/4 5Q.HCPSS Gr.2 Zp.
37	1	6001-484	Tri-Fold Slide Tube
38	2	2525-352	1/2 Med Lockwasher Zp.
39	2	2520-352	1/2—13 Hex Nut Zp.
40	1	6001-481	Clamp Plate
41	1	6001-270	Tri-Fold Marker Disc Brkt WA
42	2	2505-330	1/2—13 x 3 Shake Scn Bit Gr.5 Zp.

# PARTS IDENTIFICATION



## MARKER 14-20' DRILLS

Qty.	Part No.	Description
1	6001-230	Marker Stand WA
2	2502-317	1/2 x 1-3/4 HHCS Gr.5 Zp.
3	2565-058	Yetter Farm Equipment Decal
4	2565-266	Marker Speed Decal
5	2562-071	Patent Pending Decal
6	6001-224	Pivot Pin WA Zp.
7	6001-399	Pivot Link
8	6001-347	Link Pin, ZP
9	2527-564	1" x 1-1/2 OD x 14 Ga. Ma. Bu. Zp.
10	2531-125	1/4 x 1-3/4" Cotter Pin Zp.
11	2520-205	5/16—18 Lock Hex Nut Zp.
12	2520-459	5/8—11 Lock Hex Nut Zp.
13	6100-202	Bi-Fold Breakaway Pivot Tube WA
14	6001-257	Marker Base WA
15	2565-175	Caution Decal
16	2565-286	Seal Kit Decal
17	2530-212	3/8 x 2 Roll Pin Zp.
18	6100-333	Marker Arm Pin 9-3/4"
19	6100-216	Marker Arm WA
20	6100-201	Bi-Fold Breakaway Pivot WA
21	2502-223	5/16—18 x 4 HHCS Gr.2 Zp.
22	2502-336	5/8—11 x 4 HHCS Gr.5 Zp.
23	2565-328	Rear Decal
24	2503-387	5/8—11 x 1-3/4 SQ.HCPSS Gr.2 Zp.
25	6001-140	Marker 3" Cylinder Assembly
26	6001-483	Bi-Fold Slide Tube
27	2565-352	1/2 Med. Lockwasher Zp.
28	2520-352	1/2 Hex Nut Zp.
29	6001-481	Clamp Plate
30	6001-269	Bi-Fold Marker Disc Bracket WA
31	2505-348	1/2—13 x 3-1/2 Car. Bolt Gr.5 Zp.

# **Our name Is getting known**

**J**ust a few years ago, Yetter products were sold primarily to the Midwest only. Then we embarked on a program of expansion and moved into the East, the South, the West, and now north into Canada. We're even getting orders as far away as Australia and Africa.

**S**o, when you buy Yetter products...you're buying a name that's recognized. A name that's known and respected. A name that's become a part of American agriculture and has become synonymous with quality and satisfaction in the field of conservation tillage.

**T**hank you.

**YETTER MANUFACTURING CO.**  
Colchester, IL 62326-0358 • 309/776-4111  
Toll free 800/447-5777  
309/776-3222 (Fax)