

Yetter

FARM EQUIPMENT

Tru Closer
6000-003/004

OWNER'S MANUAL
PART IDENTIFICATION
2565-988-REV A 1/2024



YETTER MANUFACTURING CO.

Founded 1930

Colchester, IL 62326

Toll free: (800)447-5777.

Fax: (309)776-3222

Website: yetterco.com

E-mail: info@yetterco.com

YETTER

TABLE OF CONTENTS

BOLT TORQUE..... 2
FOREWORD..... 3
SAFETY..... 4
INSTALLATION..... 5
OPERATION..... 6
PARTS IDENTIFICATION..... 8-10

BOLT TORQUE



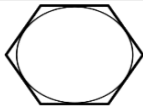



Important: Over-tightening hardware can cause just as much damage as under-tightening. Tightening hardware beyond the recommended range can reduce its shock load capacity.

All hardware is either Grade 5 unless otherwise noted. Grade 5 cap screws are marked with three radial lines on the head. Grade 8 cap screws are marked with six radial lines on the head. If hardware must be replaced, be sure to replace it with hardware of equal size, strength and thread type. Refer to the torque values chart when tightening hardware.

The chart below is a guide for proper torque. Use it unless a specified torque is called out elsewhere in the manual. Torque is the force applied to the end of the handle or cheater bar, times the length of the handle or bar. Tightening hardware beyond the recommended range can reduce its shock load capacity.

Use a torque wrench wherever possible

The following table shows torque in ft.-lbs. for coarse thread hardware.

Bolt Diameter and Threads per Inch	 Grade 2	 Grade 5	 A-325	 Grade 8
1/4	6	10		14
5/16	12	20		30
3/8 – 16	25	35		50
7/16 – 14	35	55		80
1/2 – 13	55	85		125
9/16 – 12	75	125		175
5/8 – 11	105	170		235
3/4-10	185	305		425
7/8 – 9	170	445		690
1-8	260	670		1030
1 1/8 – 7	365	900		1460
1 1/4 - 7	515	1275		2060
1 3/8 –6	675	1675		2700
1 1/2 - 6	900	2150		3500
1 3/4 – 5	1410	3500		5600

FOREWORD

You've just joined an exclusive but rapidly growing club.

For our part, we want to welcome you to the group and thank you for buying a Yetter product.

We hope your new Yetter products will help you achieve both goals-increase your productivity and increase your efficiency so that you may generate more profit.

This operator's manual has been designed into four major sections: Foreword, Safety Precautions, Installation Instructions and Parts Breakdown.



This **SAFETY ALERT SYMBOL** indicates important safety messages in the manual. When you see this symbol, be alert to the possibility of **PERSONAL INJURY** and carefully read the message that follows.

The word **NOTE** is used to convey information that is out of context with the manual text. It contains special information such as specifications, techniques and reference information of a supplementary nature.

The word **IMPORTANT** is used in the text when immediate damage will occur to the machine due to improper technique or operation.

Important will apply to the same information as specified by note only of an immediate and urgent nature.

It is the responsibility of the user to read the operator's manual and comply with the safe and correct operating procedure and to lubricate and maintain the product according to the maintenance schedule in the operator's manual.

The user is responsible for inspecting his machine and for having parts repaired or replaced when continued use of the product would cause damage or excessive wear to the other parts.

It is the user's responsibility to deliver his machine to the Yetter dealer who sold him the product for service or replacement of defective parts, which are covered by the warranty policy.

If you are unable to understand or follow the instructions provided in this publication, consult your local Yetter dealer or contact:

YETTER MANUFACTURING CO.

309/776-4111

800/447-5777

309/776-3222 (FAX)

Website: www.yetterco.com

E-mail: info@yetterco.com

WARRANTY

Yetter Manufacturing warrants all products manufactured and sold by it against defects in material. This warranty being expressly limited to replacement at the factory of such parts or products as shall appear to be defective after inspection. This warranty does not obligate the Company to bear cost of labor in replacement of parts. It is the policy of the Company to make improvements without incurring obligations to add them to any unit already sold. No warranty is made or authorized to be made, other than herein set forth. This warranty is in effect for one year after purchase.

DEALER: _____

Yetter Manufacturing warrants its own products only and cannot be responsible for damages to equipment on which mounted.

BE ALERT!

YOUR SAFETY IS INVOLVED



WATCH FOR THIS SYMBOL. IT POINTS OUT IMPORTANT SAFETY PRECAUTIONS. IT MEANS “ATTENTION – BE ALERT!”

It is your responsibility as an owner, operator, or supervision to know and instruct everyone using this machine at the time of initial assignment and at least annually thereafter, of the proper operation, precautions, and work hazards which exist in the operation of the machine in accordance with OSHA regulations.

Safety Is No Accident



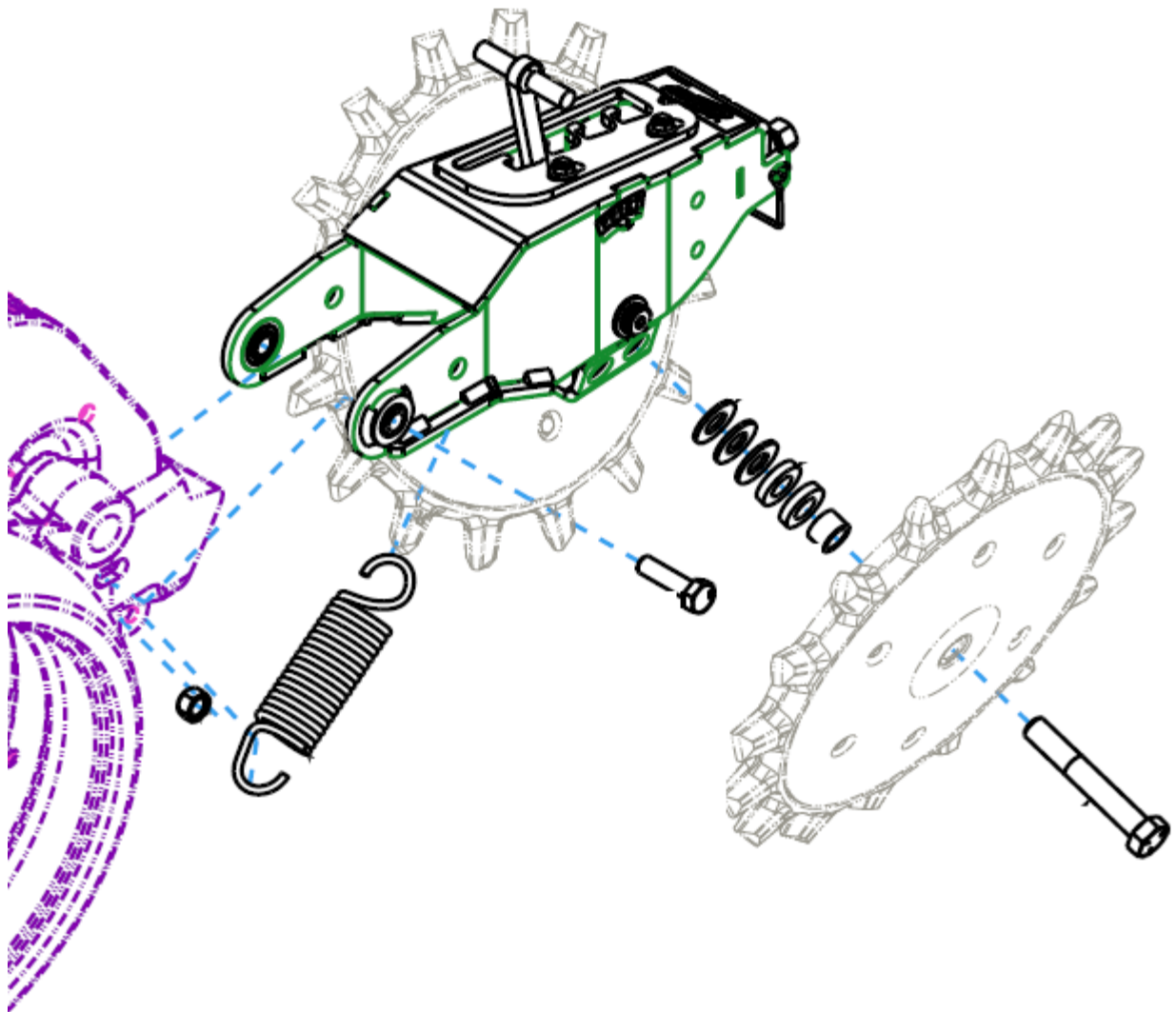
The following safety instructions, combined with common sense, will save your equipment from needless damage and the operator from unnecessary exposure to personal hazard. Pay special attention to the caution notes in the text. Review this manual at least once a year with all operators.

1. Read and understand the operator's manual before operating this machine. Failure to do so is considered a misuse of the equipment.
2. Make sure equipment is secure before operating.
3. Always keep children away from equipment when operating.
4. Make sure everyone that is not directly involved with the operation is out of the work area before beginning operation.
5. Make sure all safety devices, shields, and guards are in place and functional before beginning operation
6. Shut off all power to adjust, service, or clean.
7. Keep hands, feet, and clothing away from moving parts. It is a good idea to remove all jewelry before operating.
8. Inspect the machine periodically during operation for signs of excessive wear, loose fasteners, and unusual noises.

INSTALLATION INSTRUCTIONS

STEP 1: Remove closing wheels from the planter closing arm. Then remove the two bolts from the closing arm pivot. Once the closing arm pivot bolts are removed, the closing arm can be spun to release the downforce spring from the row unit.

STEP 2: Attach the down pressure spring to the spring adjustment handle on the Tru Closer tailpiece. Then attach the other end of the spring to the spring anchor on the row unit. Using the supplied M12 bolts, attach the Tru Closer to the planter row unit. For John Deere 7200 and newer row units, start by securing the bolts as far rearward as possible. Use the provided 5/8" bolts, washers, and bushings to install the closing wheels to the proper width.



STEP 3: For John Deere 7200 and newer row units, use the slots to align the closing wheels on the row. For Deere 7000, and Kinze units use the tolerance between the metric bolt and the hole to align the closing wheels on the row. This should allow about $\frac{3}{4}$ " of adjustment side to side. If that is not enough to properly center the closing wheels, the closing wheels themselves may need shimmed. To do this, remove washers between the right closing wheel and Tru Closer arm and reinstall on the left side, or vice versa to achieve proper alignment.

OPERATION

Angle Pitch Adjustment

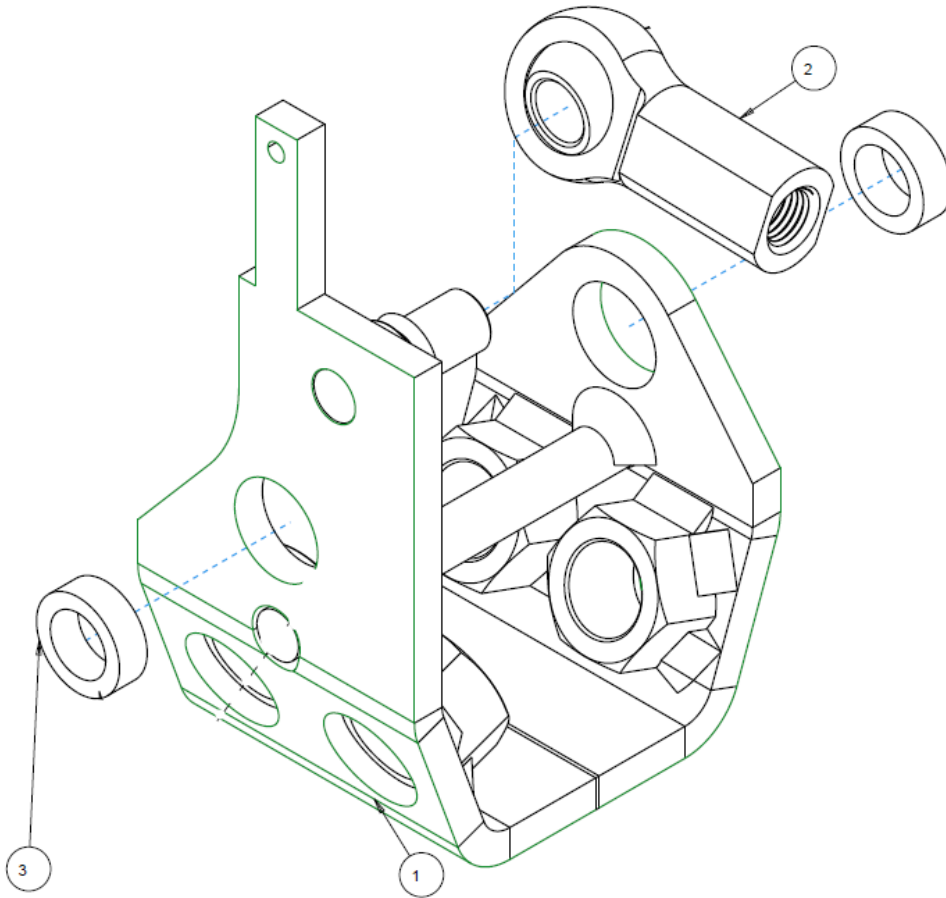
It should be noted that the toe out on a stock tailpiece of 4 degrees. This is universal across manufacturers. When getting adjusted this should be the setting to "compare to stock". Pitching the closing wheels toed out at about 6-8 degrees greatly helps close the seed trench and take air pockets out at seed depth. In general the more challenging the field conditions, the more aggressive you want to toe out the closing wheels.

Down Pressure Adjustment

Down pressure can be calibrated on a row to row basis, as brand new stock tail pieces can fluctuate as much as 10% row to row. The two 5/16" flange nuts can be loosened on the spring adjustment plate, and the spring adjustment plate can be moved forward or backwards. Moving forward reduces down pressure and backward increases. A rule of thumb is to start on notch 1 or 2. If there is any air pockets at seed depth or any indication of a sidewall, increase down pressure. If you have to increase the down pressure so much that you start "packing" the seed trench, increase the toe out adjustment and decrease the down pressure.

PART IDENTIFICATION

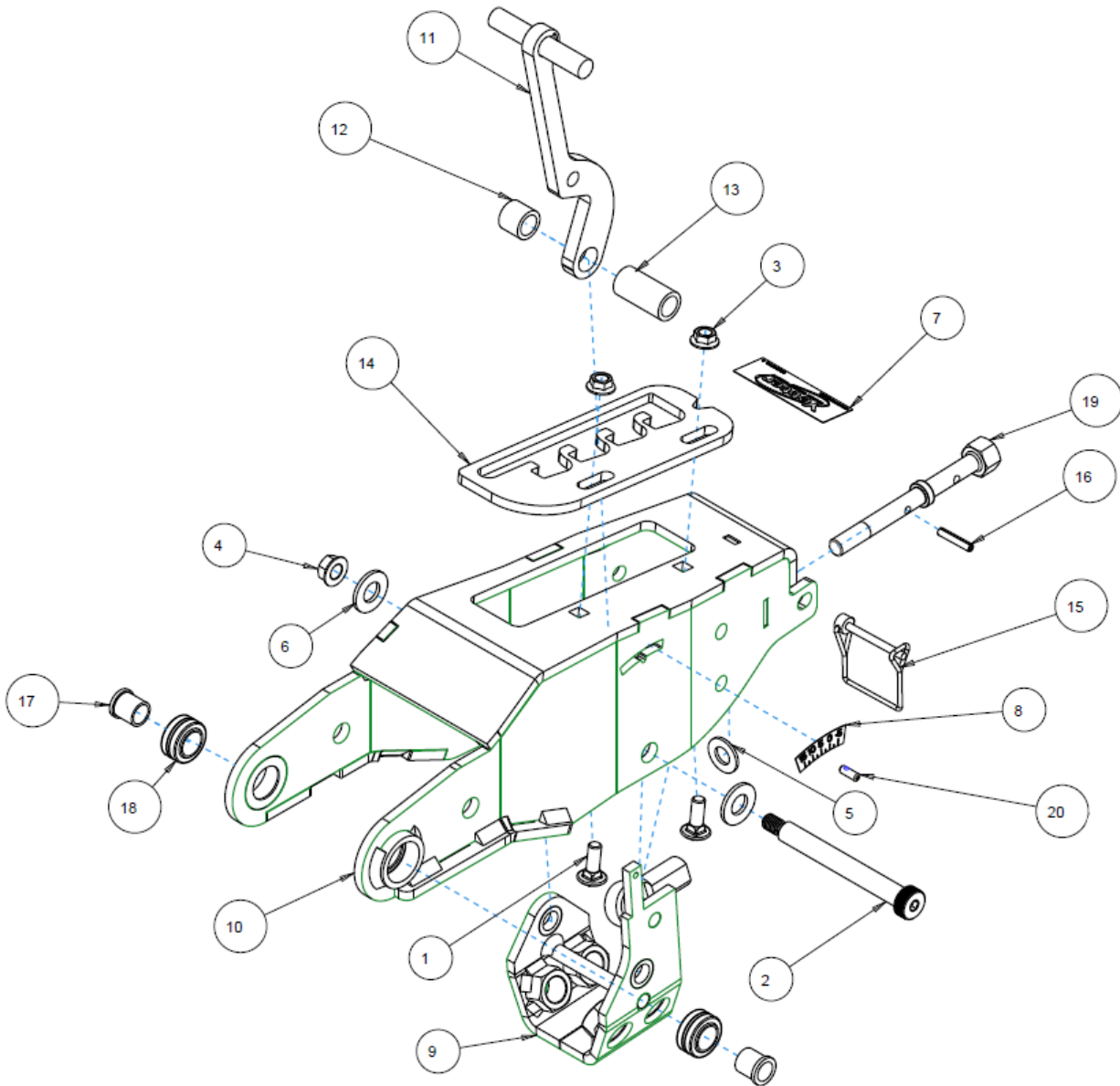
6000-130



ITEM	PART NO.	DESCRIPTION	QTY
1	6000-262	WHEEL CARRIER W.A.	1
2	6000-450	7/16" BALL JOINT ROD END	1
3	6000-463	WHEEL CARRIER FIBER BEARING	2

PART IDENTIFICATION

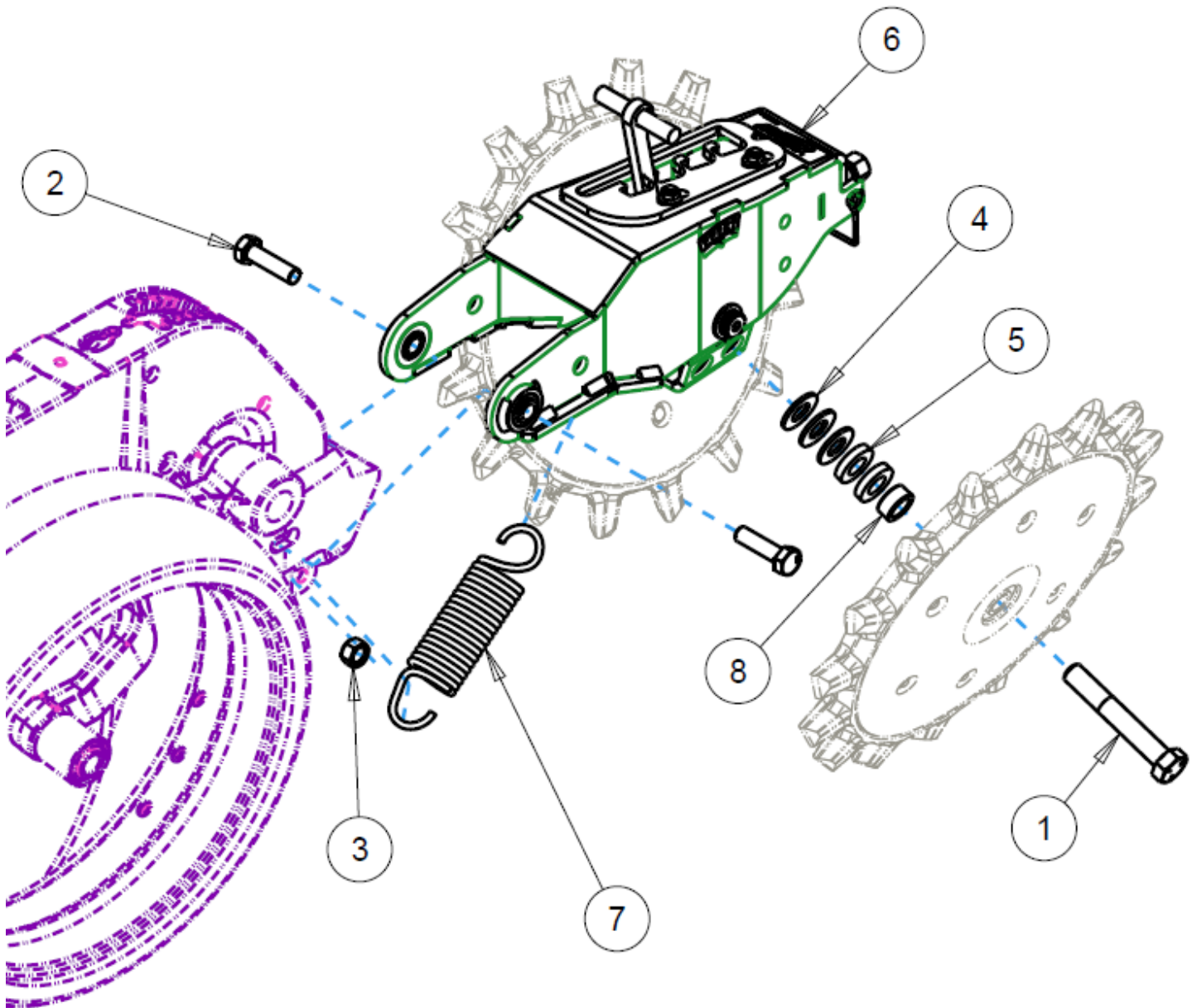
6000-121



ITEM	PART NO.	DESCRIPTION	QTY
1	2502-192	5/16-18 X 7/8 CARBLT GR5 ZP	2
2	2510-312	1/2" DIA. X 4" L SHOULDER SCREW	1
3	2520-206	5/16-18 FLANGE LOCK NUT	2
4	2520-252	3/8-16 HEX FLANGE TOP LOCK NUT, GR G, ZP	1
5	2526-252	7/16 SAE FLATWASHER ZP	1
6	2526-352	1/2 SAE FLATWASHER ZP	2
7	2565-179	YETTER DECAL 1" X 3"	1
8	2565-509	PITCH ANGLE DECAL	1
9	6000-130	WHEEL CARRIER	1
10	6000-255	TAILPIECE BODY W.A	1
11	6000-256	SPRING ADJUSTMENT HANDLE	1
12	6000-447	SPACER BUSHING	1
13	6000-448	SPACER BUSHING	1
14	6000-452	SPRING ADJUSTMENT PLATE	1
15	6000-460	3/16" DIAMETER WIRE LOCK PIN	1
16	6000-462	3/16" HEAVY DUTY COILED SPRING PIN	1
17	6000-465	PIVOT BUSHING	2
18	6000-466	.625" ID PLAIN SPHERICAL BEARING, SEALED	2
19	6000-467	ADJUSTMENT LINKAGE	1
20	6000-470	INDICATOR STUD	1

PART IDENTIFICATION

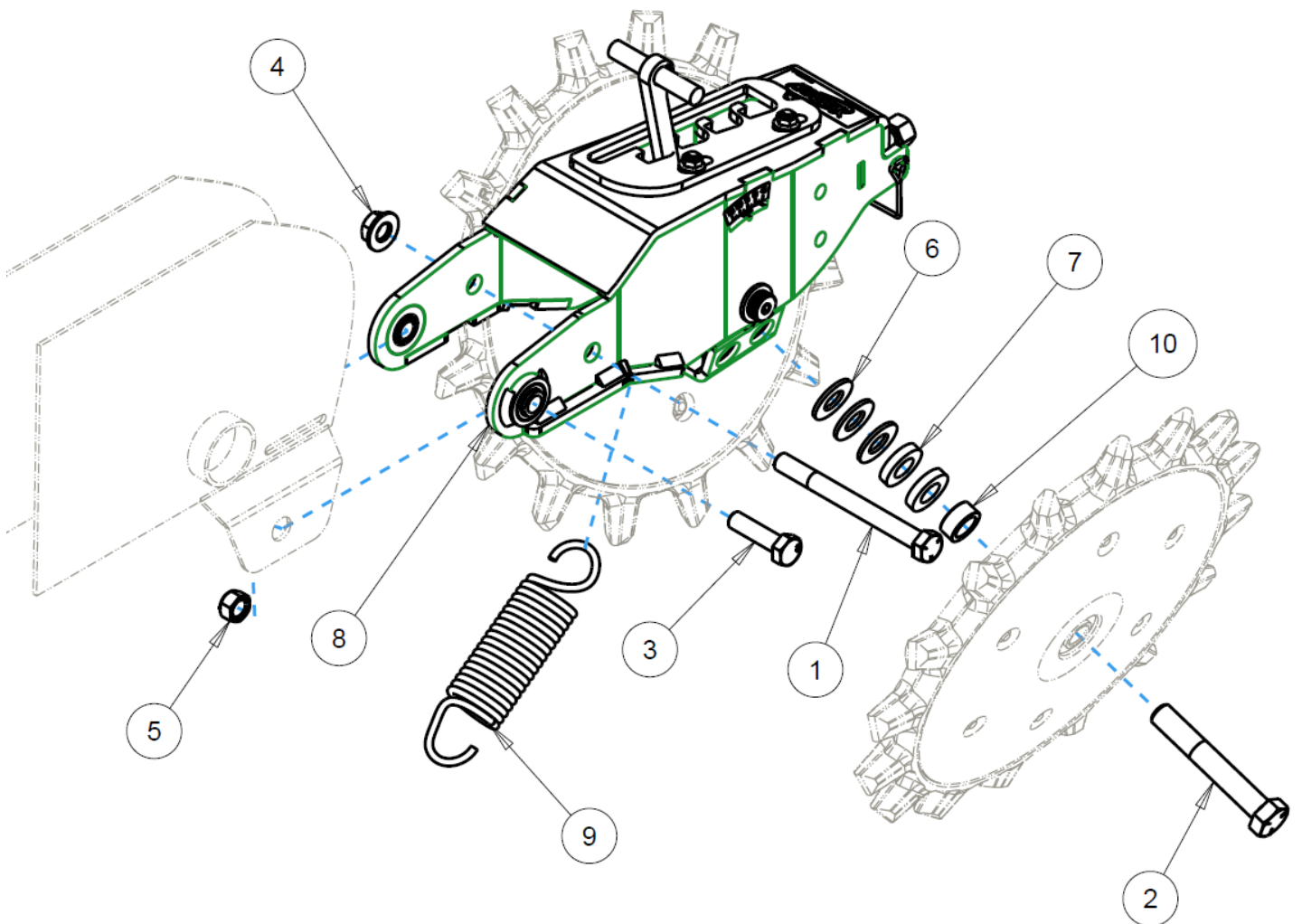
6000-003 Deere



ITEM	PART NO.	DESCRIPTION	QTY
1	2502-336	5/8-11 X 4 HHCS GR. 5 ZP	2
2	2502-818	M12-1.75 X 45 GR 8.8 HHCS ZP	2
3	2520-700	HEX LOCKNUT DEFLECTED THREAD-M12	2
4	2526-453	5/8 SAE FLATWASHER ZP	6
5	2526-455	WASH 21/32" X 1 1/4" X 1/4	4
6	6000-121	TRU CLOSER SUB ASSEMBLY	1
7	6000-455	DOWNFORCE SPRING	1
8	6200-483	1" O.D. X 0.688" I.D. X .433" L BUSHING	2

PART IDENTIFICATION

6000-004



ITEM	PART NO.	DESCRIPTION	QTY
1	2502-298	1/2-13 x 5.25 HHCS GR 5 ZP	1
2	2502-336	5/8-11 X 4 HHCS GR. 5 ZP	2
3	2502-818	M12-1.75 X 45 GR 8.8 HHCS ZP	2
4	2520-368	1/2-13 HEX FLANGE NUT, PREVAIL_TORQUE, GR C, ZP	1
5	2520-700	HEX LOCKNUT DEFLECTED THREAD-M12	2
6	2526-453	5/8 SAE FLATWASHER ZP	6
7	2526-455	WASH 21/32" X 1 1/4" X 1/4	4
8	6000-121	TRU CLOSER SUB ASSEMBLY	1
9	6000-455	DOWNFORCE SPRING	1
10	6200-483	1" O.D. X 0.688" I.D. X .433" L BUSHING	2



A Tradition of Solutions since 1930

Yetter Farm Equipment Co

PO BOX 358 109 S. McDonough

Colchester, IL 62326-0358

Phone: 309-776-4111

Toll Free: 800-447-5777

Email: info@yetterco.com

For updated models and manuals visit the Yetter website:

www.yetterco.com

© Yetter Farm Equipment Co. All Rights Reserved

2565-988 – 1/2024