



2930 SERIES WITH STRAIGHT SHANK DISC-CHISEL COULTER BRACKET KIT W/STRAIGHT SHANK WITH 2910 SERIES AND 2950 SERIES

2565-185_REV_B 04/2019

INSTALLATION AND OPERATING INSTRUCTIONS

Before assembling the brackets, mark your bar for the spacing of the coulters. Select part numbers 3010-301, 2525-451, 2520-452, 2520-394 and mount them loose on the bar as shown in the figure above. If installing a chisel or coil shank, slide it under the tool bar and bolt to bottom shank bracket with 5/8"-11 x 3-1/4" bolt (2502-385) and 5/8" nuts and washers as shown. Align the brackets on the marks on the tool bar and tighten. (Be sure brackets remain square with the bar to assure shank will be straight when installing.)

Install u-bolts (3010-304) into shank brackets using the 1/2" flat washer, lock washers, and nuts. (Leave the u-bolts loose to allow straight shank to go through the u-bolts.) Drive roll pin (2530-208) into one end of the straight shank (3010-303) until it is centered in the shank. Drop the shank down through the top of the u-bolts until the roll pin is resting on the top u-bolt. Set the shank at the proper depth and tighten the 1/2" nuts on the u-bolts. An additional roll pin is supplied for the bottom hole in the shank AFTER the coulters are installed.

PERIODICALLY CHECK ALL NUTS TO BE SURE THEY ARE TIGHT.

YETTER MANUFACTURING CO.

FOUNDED 1930
Colchester, IL 62326-0358
Toll free: 800/447-5777
309/776-3222 (Fax)

Website: www.yetterco.com
E-mail: info@yetterco.com

YETTER



2950 SERIES WITH OFFSET SHANK

DISC-CHISEL COULTER BRACKET KIT W/OFFSET SHANK

INSTALLATION AND OPERATING INSTRUCTIONS

The 2950 Offset Disc Chisel coultter is designed with two mounting arrangements in mind. The bracket assembly can be attached to the frame beside the existing shank brackets or can replace the existing shank brackets. Before beginning to assemble, choose the method needed and follow the instructions for that method.

Installing New Brackets

Before assembling the brackets, mark your bar for the spacing of the coultters. Select parts numbered 3010-301, 2525-451, 2520-452, and 2502-294 and mount them loose on the bar as shown. If installing a chisel or coil shank, slide it under the tool bar and bolt to bottom shank bracket with 5/8-11 x 3-1/4" bolt (2505-385) and 5/8" nuts and washers. Align the brackets on the marks on the toolbar and tighten. (Be sure brackets remain square with the bar to assure shank will be straight when installed.) Offset shank can now be installed. (See below)

Installing Beside Existing Brackets

If mounting brackets next to existing brackets select part numbers 3010-301, 2525-451, 2520-452, and 2502-395 and mount as shown. Slide the assembly as close as possible to the existing brackets and tighten 5/8" bolts and nuts. Offset shank can now be installed.

Installing Offset Shank

Install clamp weld assemblies (3011-201) into shank brackets using the 1/2" flat washers, lock washers, nuts, and 4" bolts. (Leave the clamp weld assemblies loose to allow shank to go through the assembly.) Raise the shank up through the bottom until shank is through both clamp weld assemblies. Set the shank at the proper depth and tighten the 1/2" nuts and bolts.

Before going to the field, all coultters should first be set to operate at the same depth. To adjust the depth of each coultter, the clamp w.a. holding the 1-1/2" shank must be loosened. The 1-1/2" shank can then be slipped up or down to give the desired depth and/or clearance. At this time turn the offset shank to position the coultter in front of the chisel or coil shank. (NOTE: The depth of the coultters should be set so the hub of each coultter is always above ground level when in use.)

PERIODICALLY CHECK NUTS TO BE SURE THEY ARE TIGHT.

YETTER MANUFACTURING CO.

FOUNDED 1930

Colchester, IL 62326-0358

Toll free: 800/447-5777

309/776-3222 (Fax)

Website: www.yetterco.com

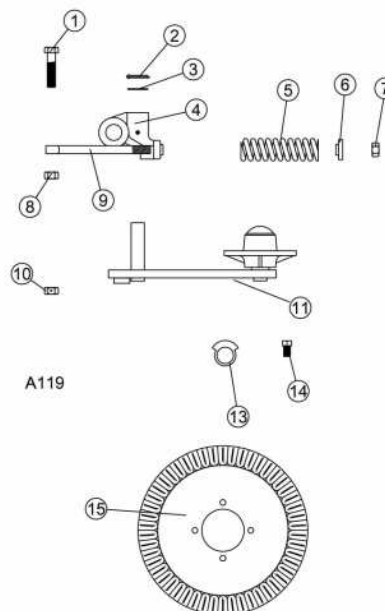
E-mail: info@yetterco.com

YETTER



2910 SERIES SPRING CUSHIONED PLOW COULTER PARTS & INSTALLATION

KEY.	QTY.	PART NO.	DESCRIPTION
1	1	2502-410	3/4-16 X 3" HHCS GR5 ZP
2	1	2531-125	1/4 X 1 3/4" COTTER KEY
3	1	2526-561	1-17/64"ID X 7/8" X 14GA. MACHINERY BUSHING
4	1	2910-320	PIVOT CASTING
5	1	2910-311	SPRING
6	1	2910-302	SPRING BUSHING
7	1	2520-516	3/4-10 LOCK HEX NUT ZP
8	1	2520-508	3/4-16 HEX NUT ZP
9	1	2570-125	EYEBOLT, 3/4" EYE
10	1	2520-511	3/4-16 LOCK HEX NUT ZP
11	1	2910-201	COULTER ARM W.A.
12	1	2910-127	SPRING CUSHIONED BRKT. AND HUB ASSEMBLY (INCLUDES 1-11)
13	1	2910-301	LOCKING COLLAR
14	1	2503-379	5/8"-11 X 1 SQ. HCPSS GR. 2
15	OPT.	2571-168	20" RIPPLE BLADE
	OPT.	2571-158	17" RIPPLE BLADE



UPDATED 04/16/19

INSTALLATION AND OPERATING INSTRUCTIONS



Caution: COULTER BLADE HAS SHARP EDGE.
USE CARE WHEN WORKING WITH OR CLOSE TO BLADES

Place the coulter and locking collar (2910-301) over the shank then insert pin through the retainer hole. After aligning coulter for proper position, tighten setscrew in locking collar. When tightening setscrew, align locking collar in center of slot in hinge casting for maximum swivel.

The coulter is equipped with tapered bearings; and are pre-lubricated during assembly. Grease the zerk on the hinge casting (2910-320) prior to using the coulters then grease the hinge casting and hub assembly every 50 hours. Before going to the field, check the springs to be sure they have been given a preload tension. If the spring can be rotated on the push rod by hand, it is too loose and must be tightened. Failure to do so may result in lost parts or excessive wear. Approximately one inch of threads on the end of the push rod should be exposed when the spring is properly preloaded.

PERIODICALLY CHECK ALL NUTS TO BE SURE THEY ARE TIGHT.

YETTER MANUFACTURING CO.

FOUNDED 1930

Colchester, IL 62326-0358

Toll free: 800/447-5777

309/776-3222 (Fax)

Website: www.yetterco.com

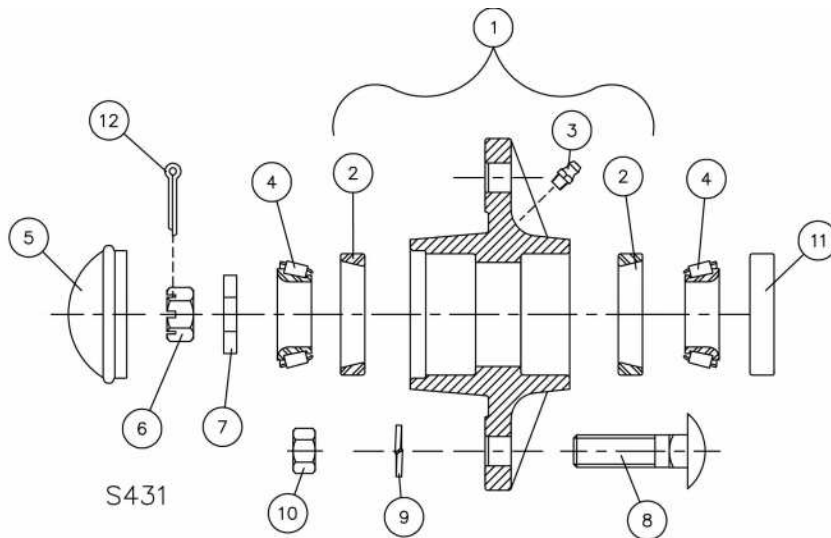
E-mail: info@yetterco.com

YETTER

Yetter

FARM EQUIPMENT

HUB ASSEMBLY



DET	QTY	PART NO.	DESCRIPTION
1	1	2900-105	HUB PRESSED ASSEMBLY
2	2	2550-029	LM67010 CUP (PRE-ASSEMBLED W/NO. 1)
3	1	2533-110	1/4-28 ZERK STRAIGHT SELF-TAP (PRE-ASSEMBLED W/NO. 1)
4	2	2550-027	LM67048 CONE
5	1	2570-375	HUB CAP
6	1	2520-469	5/8-18 SLOTTED HEX NUT, BLACK
7	1	2526-449	5/8" FLATWASHER, 1/4" THK.
8	4	2505-337	1/2-13 X 1-1/4 CAR BLT GR 5
9	4	2525-352	1/2" MED LOCKWASHER ZYD.
10	4	2520-352	1/2-13 HEX NUT ZYD
11	1	2550-066	TRIPLE LIP SEAL, NTI #1812-4
12	1	2531-102	1/8 X 1/4 COTTER PIN, BLACK
		2900-123	HUB ASSEMBLY (INCLUDES #'S 1 THRU 11)

UPDATED 02/20/15

YETTER