

**Yetter**  
... for land's sake

# **750 COULTER BAR ATTACHMENT KIT**

**YETTER MANUFACTURING CO.**  
*FOUNDED 1930*

Colchester, IL 62326-0358 • 309/776-4111  
Toll free: 800-447-5777  
309/776-3222 (Fax)

**Yetter**

## FOREWORD


You've just joined an exclusive but rapidly growing club.

For our part, we want to welcome you to the group and thank you for buying a Yetter product.

We hope your new Yetter products will help you achieve both increased your productivity and increased efficiency so that you may generate more profit.

This operator's manual has been designed into four major sections. Foreword, Safety Precautions, Installation Instructions and Parts Breakdowns.

Throughout the manual references may be made to left side and right side. These terms are used as viewed from the operator's seat facing the front of the tractor.

 This **SAFETY ALERT SYMBOL** indicates important safety messages in the manual. When you see this symbol, be alert to the possibility of **PERSONAL INJURY** and carefully read the message that follows.


The word **NOTE** is used to convey information that is out of context with the manual text. It contains special information such as specifications, techniques, reference information of a supplementary nature.

The word **IMPORTANT** is used in the text when immediate damage will occur to the machine due to improper technique or operation. Important will apply to the same information as specified by note only of an immediate and urgent nature.

It is the responsibility of the user to read the operator's manual and comply with the safe and correct operating procedure and to lubricate and maintain the product according to the maintenance schedule in the operator's manual.

The user is responsible for inspecting his machine and for having parts repaired or replaced when continued use of the product would cause damage or excessive wear to the other parts.

It is the user's responsibility to deliver his machine to the Yetter dealer who sold him the product for service or replacement of defective parts which are covered by the warranty policy.

 If you are unable to understand or follow the instructions provided in this publication, consult your local Yetter dealer or contact:

**YETTER MANUFACTURING CO.**  
(309) 776-4111

## WARRANTY POLICY

Yetter Manufacturing warrants all products manufactured and sold by it against defect in material. This warranty being expressly limited to replacement at the factory of such parts or products as shall appear to be defective after inspection. This warranty does not obligate the Company to bear cost of labor in replacement of parts. It is the policy of the company to make improvements without incurring obligations to add them to any unit already sold. No warranty is made or authorized to be made, other than herein set forth. This warranty is in effect for 1 year after purchase.

Dealer \_\_\_\_\_

**Yetter Manufacturing warrants its own products only and cannot be responsible for damage to equipment on which mounted.**

# SAFETY

A brief description of signal words that may be used in this manual:

**CAUTION:** Used as a general reminder of good safety practices or to direct attention to unsafe practices.

**WARNING:** Denotes a specific potential hazard.

**DANGER:** Denotes the most serious specific potential hazard.

## SAFETY PRECAUTIONS

You can make your farm a safer place to live and work if you observe the safety precautions given. Study these precautions carefully and insist that they be followed by those working with you and for you.

Finally, remember this: an accident is usually caused by someone's carelessness, neglect or oversight.



Never clean, lubricate or adjust a machine that is in motion. Always lower or block the implement before performing service.

If machine must be serviced in the raised position, jack or block it up to prevent it from accidentally falling and injuring someone.

Do not allow riders on the tractor or implement.

Use speeds and caution dictated by the terrain being traversed. Do not operate on any slope steep enough to cause tipping or loss of control.

Be sure all personnel are clear of the immediate area before operating.

Read and understand the operator's manual and require all other persons who will operate the equipment to do the same.

Be familiar with all tractor and implement controls and be prepared to stop engine and implements quickly in an emergency.



Consult your implement and tractor operator's manual for correct and safe operating practices.

Beware of towed implement width and allow safe clearance.

**FAILURE TO HEED MAY RESULT IN PERSONAL INJURY OR DEATH.**

# INSTALLATION

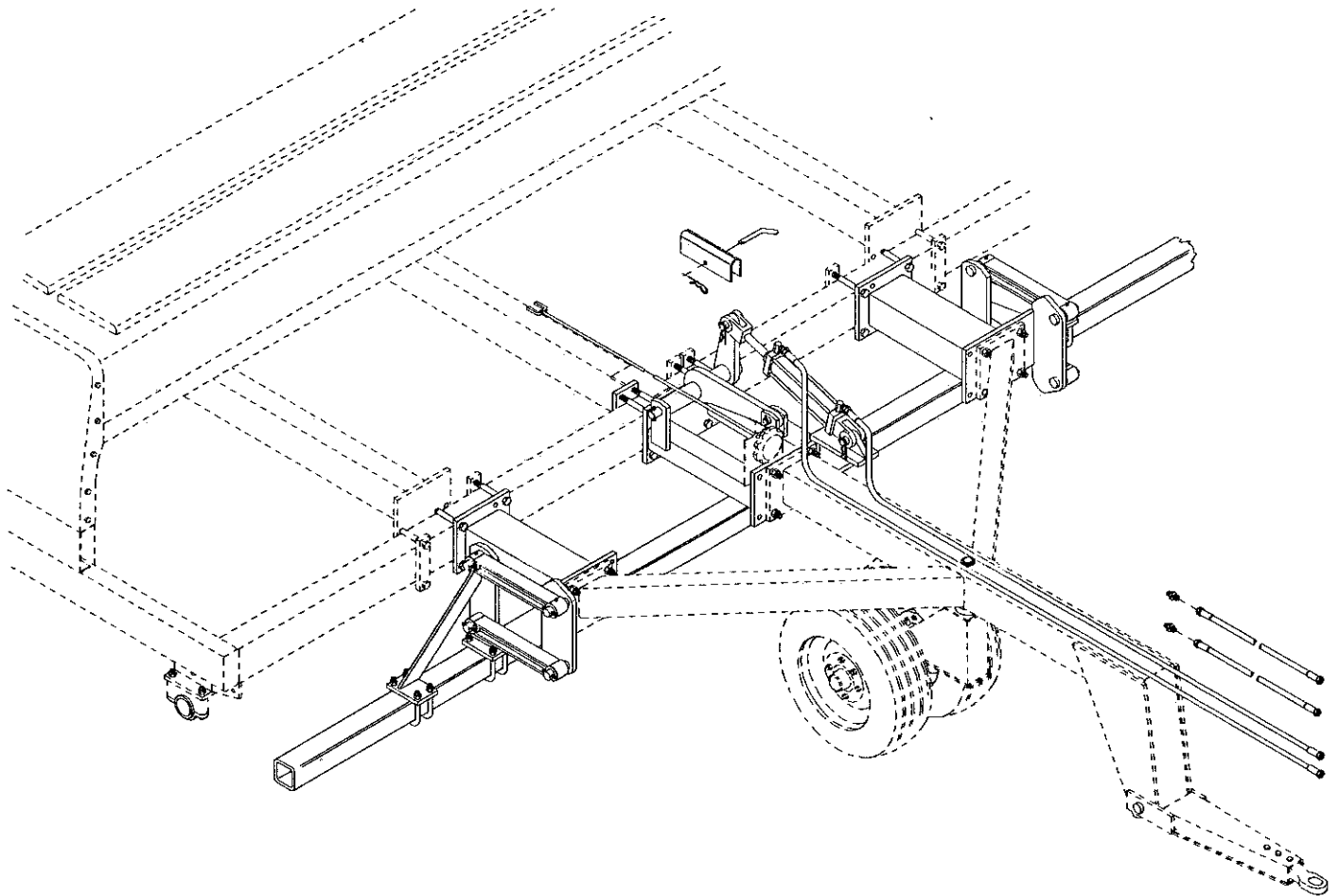
## YETTER LIQUID FERTILIZER ATTACHMENT FOR JD 750 DRILL

**NOTE:** Drill must be equipped with castor wheel hitch. Swivel mounted Yetter Fertilizer Coulters must be used.

1. Jack up and support the front of the drill frame at each front corner. Place axle stands under each end of the rockshaft or frame.
2. Unbolt and remove from the drill the front castor wheel hitch sub-frame. Save the nuts and bolts for later use.
3. Attach the Center Frame Extension to the drill frame. The plate which guides the control rod for the control valve is to be moved to the front of the Center Frame Extension and attached by the 3/4" x 2 1/2" Gr. 8 bolt. Note the positioning of each part, refer to illustration. Do not tighten any bolts yet.
4. Attach Outer Extensions to the front of drill frame, note alignment of bolts shown in illustration.
5. Move the front castor wheel hitch subframe up to the extensions and install the 3/4" x 2 1/2" Gr. 8 bolts.
6. Tighten all of the bolts evenly, tightening the lower bolts first. Tighten to 270 ft. lbs.
7. Attach cast parallel arms to each of the pivot pins on the Outer Frame Extensions. Note that the upper arm should have the grease zerks facing up and the lower should have zerks facing down. Secure the arms on the pins with a 1 1/4" ID x 2 1/4" OD washer and 3/8" x 2 1/2" roll pin.
8. Assemble the rockshaft WA to the Center Frame Extension WA with the Pivot Shaft and 3/8" x 2 1/2" roll pins.
9. Install the 3 x 8 cylinder (retracted) between the fixed lug and the rockshaft lever arm. The rod clevis end must be attached to the rockshaft lever arm.
10. Assemble the Connecting Link to the Rockshaft lift arm with clevis pin and cotter pins.
11. Slide the Toolbar underneath the frame extensions and attach to lower end of Connecting Link with a clevis pin and cotter pins.
12. Assemble the Toolbar Brackets to the cast parallel arms and the toolbar. The Toolbar Brackets are built as left and righthand parts. When correctly installed the pivot pins will be positioned slightly to the rear of the toolbar. It is important that these brackets are correctly installed otherwise the fertilizer coulters may interfere with parts of the drill. Secure the brackets to the arms with 1 1/4" ID x 2 1/4" OD washers and 3/8" x 2 1/2" roll pins. Attach the brackets to the toolbar with the u-bolts and 5/8" locknuts.
13. Grease eight zerks on the parallel arms and one on the Rockshaft.
14. Install the extended length Control Valve Rod in place of the existing part with the washers, cotter pins and knob removed from the existing part.

# HYDRAULIC ASSEMBLY

1. Install 90 degree fittings into hydraulic cylinder and attach hoses. Be sure to use cable ties to secure all hydraulic hoses and keep them clear of any moving parts.
2. Once the hydraulics have been connected it is advisable to operate the system a couple of times to check for leaks, clearances and binding of parts before assembling the coulters to the toolbar.
3. Attach 22" extension hoses to the drill opener lift hoses with unions provided.



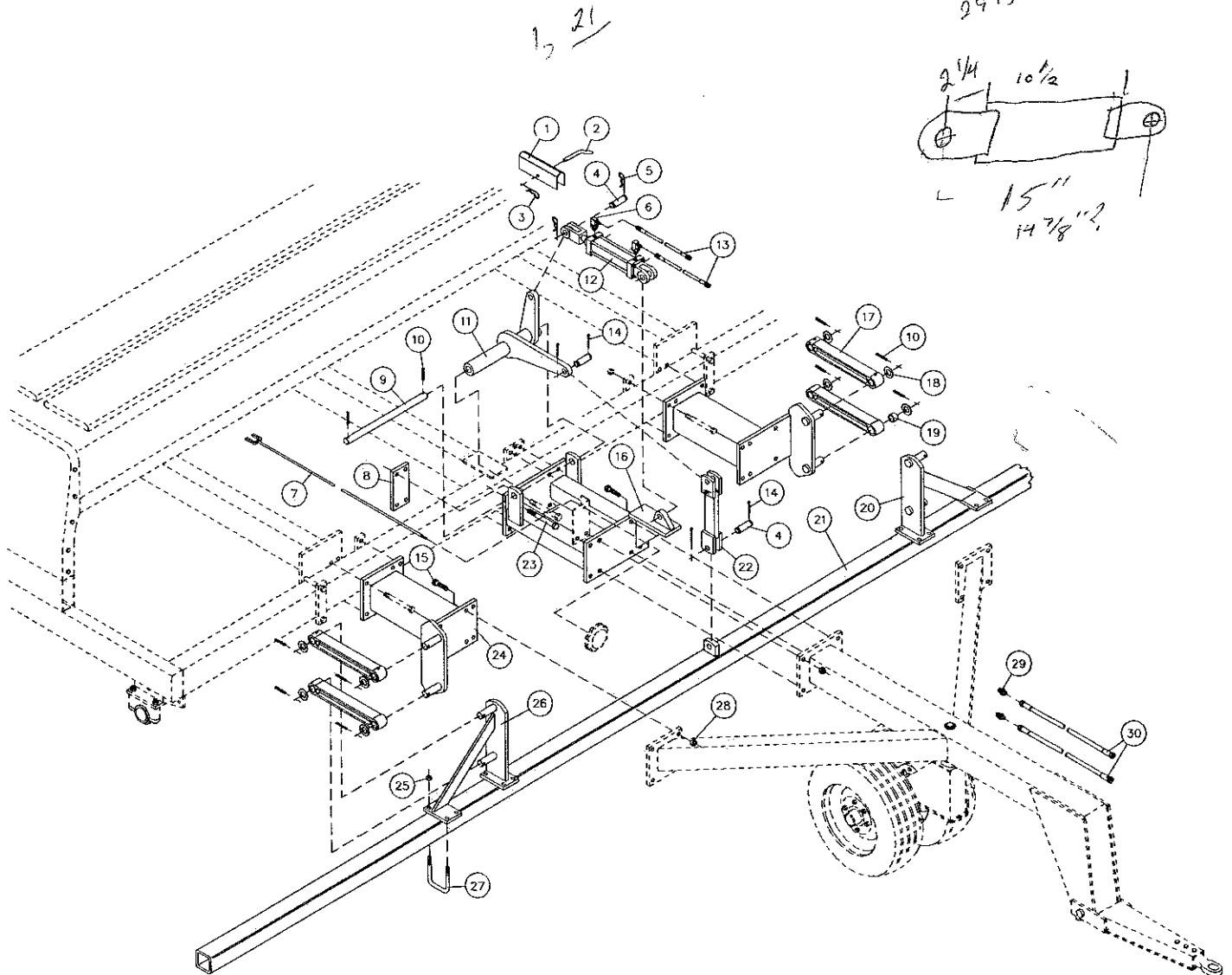
1218

## COULTER INSTALLATION

1. Assemble the coulters according to the instructions supplied in that manual (Yetter part. no. 2565-282 for 2975, 2565-369 for 2995, 2565-579 for 2991). The 12 5/8" shanks are to be used with the end hole at the lower end. Four 3" offset shanks need to be used with 10" spacing as shown on page 10. DO NOT lock the pivot casting down onto the roll pin.
2. According to the row spacing of your drill, chalk mark the positions of the coulters on the toolbar as desired.
3. Assemble clamp kits to toolbar at marked location. For 7 1/2" spacing assemble the Coulters Mounting Plate W.A.'s, Clamp Strap, 4 x 4 Clamp Plate and Clamp Casting as shown on page 8 and 9.
4. Install the coulters by sliding the shanks into the clamp castings and place a cotter pin through the shank hole, between the clamp castings, to prevent the coulters falling off.
5. If there are coulters located directly underneath the Frame Extensions, position the shanks so that the top end is flush with the top edge of the clamp plate and clamp casting, then tighten the setscrews. Slide the coulters up until within 1/4" of the underside of the clamp castings and then tighten the locking collar in a mid position thus allowing the coulters to swivel freely.
6. For coulters not located underneath the Frame Extensions, place the coulters within 1/4" of the underside of the clamp castings and pull the shank up as far as possible before tightening all the setscrews. Tighten the locking collar so as to allow swivel in either direction, DO NOT LOCK the coulters on the roll pin. All the coulters must be free to swivel.

# PARTS IDENTIFICATION

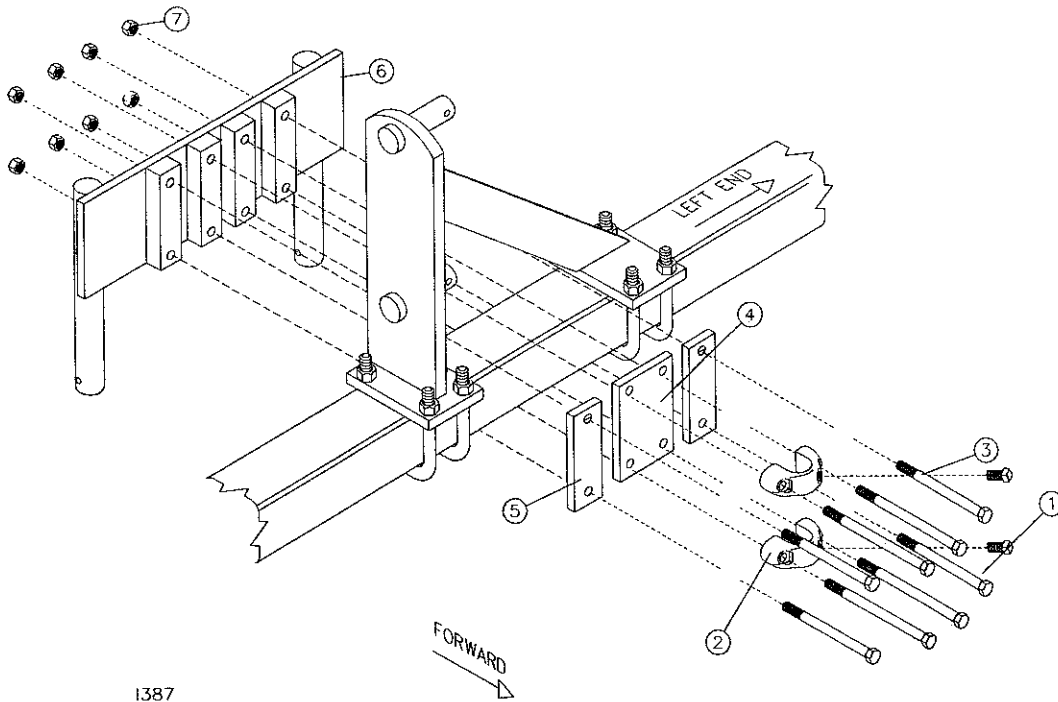
## 750 COULTER BAR ATTACHMENT KIT



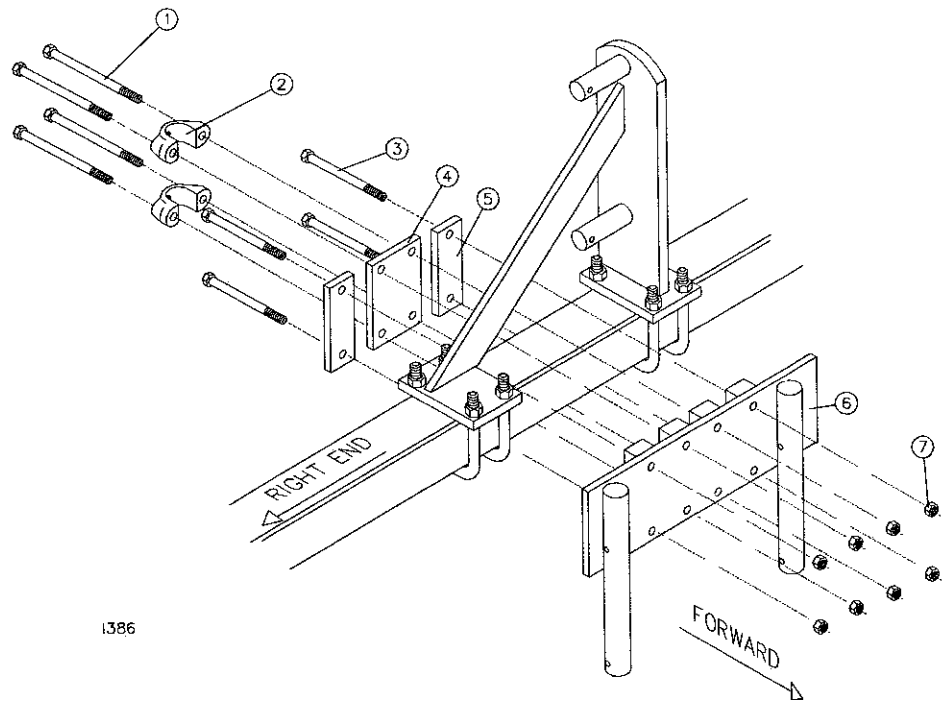
1171

Key	Qty	Part No.	Description	Key	Qty	Part No.	Description
1	1	2975-419	Cylinder Lock	16	1	2975-251	Center Frame Extension W.A.
2	1	2965-305	Pin, Furrowing Attachment	17	4	6700-141	Parallel Arm Assembly
3	1	2570-448	1/8" Std. Hairpin Cotter, ZP	18	8	2527-560	1 1/4 ID x 2 1/4 OD x 10 GA., M.B. ZP
4	4	2515-172	Clevis Pin	19	16	2528-361	1 1/4 ID x 1 1/2 OD x 1" Brnz. Bush
5	4	2570-465	7 GA. Hairpin Cotter	20	1	2975-242	Toolbar Bracket, LH, W.A.
6	2	2515-324	90 Deg. 3/4 SAE To -6 JIC	21	1	2975-240	Toolbar W.A.
7	1	2975-250	Valve Control Rod, W.A.	22	1	2975-248	Connecting Link, W.A.
8	1	2975-421	Clamp Plate	23	4	2502-427	3/4-10 x 7 HHCS Gr.8 ZP
9	1	2975-418	Pivot Shaft, ZP	24	2	2975-245	Outer Extension, 5 x 7, W.A.
10	10	2530-208	3/8 x 2 1/2" Roll Pin	25	16	2520-459	5/8-11 Lock Hex Nut, ZP
11	1	2975-244	Rockshaft, W.A.	26	1	2975-241	Toolbar Bracket, RH, W.A.
12	1	2515-375	ASAE 3 x 8 Cylinder, (SAE)	27	8	2570-588	5/8 x 4 x 5 U-Bolt, ZP
13	2	2515-367	Hose, 1/4 x 135" W/-6 JIC Ends	28	16	2520-515	3/4-10 Lock Hex Nut, ZP
14	4	2531-124	Cotter Pin, 3/16 x 2	29	2	2515-323	Union, -8 To -8 JIC
15	12	2502-422	3/4-10 x 2 1/2" HHCS Gr. 8, ZP	30	2	2515-380	Hose, 3/8 x 22" W/-8 JIC Ends

# SPECIAL CLAMP PLATE ASSEMBLY FOR 7 1/2" SPACING



I387

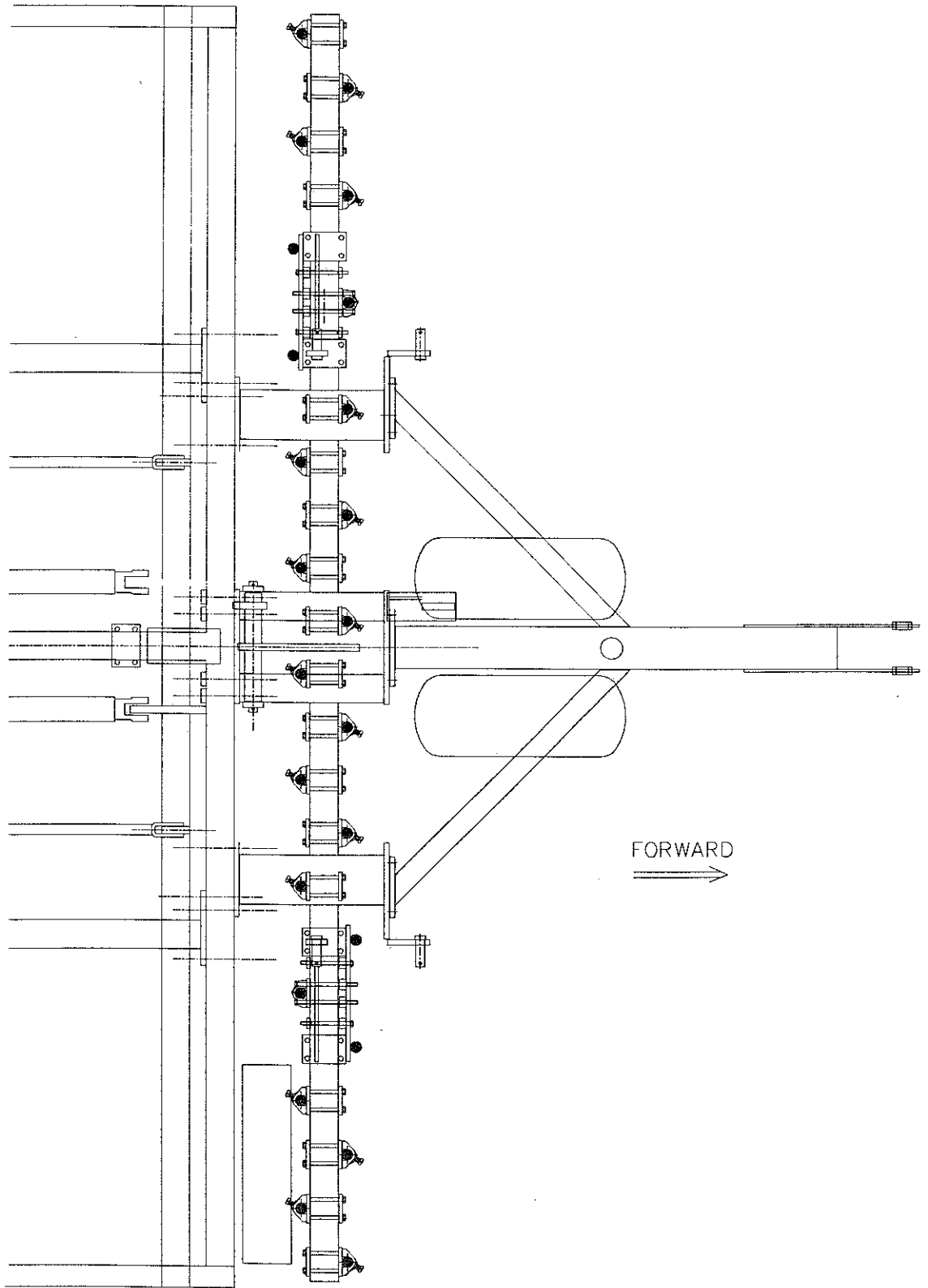


I386

Key	Qty	Part No.	Description
1	4	2502-369	1/2-13 x 8" HHCS Gr. 5 ZP
2	2	2990-360	Clamp Casting, Drilled
3	4	2990-314	Clamp Plate, 4" Square and 3" Diamond Bar
4	1	2502-371	1/2-13 x 7" HHCS Gr. 5 ZP
5	2	2999-308	Clamp Strap
6	1	2999-202	Coulter Mounting Plate, W.A. (750 Drill)
7	8	2520-357	1/2-13 Lock Nut ZP

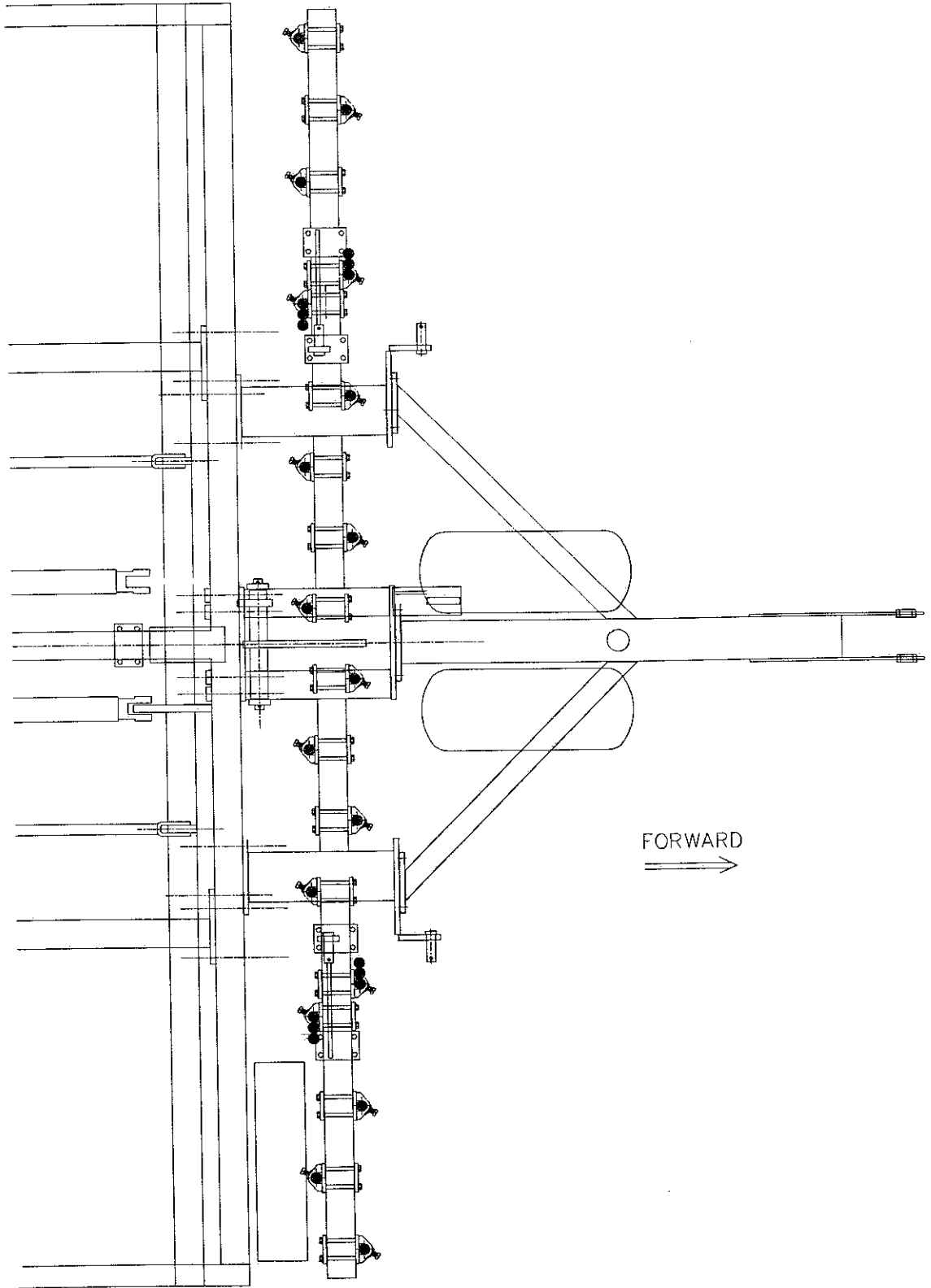


# COULTER PLACEMENT FOR 7 1/2" SPACING



A153

# COULTER PLACEMENT FOR 10" SPACING



A153

● = 3" OFFSET SHANK 2990-208

# NOTES

# Our name Is getting known

**J**ust a few years ago, Yetter products were sold primarily to the Midwest only. Then we embarked on a program of expansion and moved into the East, the South, the West, and now north into Canada. We're even getting orders from as far away as Australia and Africa.

**S**o, when you buy Yetter products . . . you're buying a name that's recognized. A name that's known and respected. A name that's become a part of American agriculture and has become synonymous with quality and satisfaction in the field of conservation tillage.

**T**hank you

**YETTER MANUFACTURING CO.**  
Colchester, IL 62326-0358 • 309/776-4111  
Toll Free 800/447-5777  
309/776-3222 (Fax)