

Yetter

FARM EQUIPMENT

5000 SERIES STALK DEVASTATOR CORN STALK ROLLER

PATENTED

5000-029B, 5000-030C, 5000-032C, 5000-036, 5000-038A
CASE IH 4400 6, 8, & 12 ROW 30" MODELS

OPERATOR'S MANUAL
PART IDENTIFICATION
2565-792_Rev_F – 01/2024



YETTER MANUFACTURING CO.

Founded 1930

Colchester, IL 62326

Toll Free: (800)447-5777

Fax: (309)776-3222

Website: yetterco.com

E-mail: info@yetterco.com

YETTER

TABLE OF CONTENTS

INTRODUCTION / WARRANTY	2
OPERATION CHECKLIST / SAFETY INFORMATION	3-4
BOLT TORQUE / TOOLS REQUIRED	5
ASSEMBLY INSTRUCTIONS	6 – 11
OPERATION / STORAGE / TRANSPORT / MAINTENANCE / LOCK UP	12 – 13
PART IDENTIFICATION	
5000-029B	14-15
5000-030C	16-17
5000-032C	18
5000-036	19
5000-038A	20-21
MISC. PART ID	22
TROUBLESHOOTING.....	23

FOREWORD

You've just joined an exclusive but rapidly growing club.

For our part, we want to welcome you to the group and thank you for buying a Yetter product.

We hope your new Yetter products will help you achieve both goals-increase your productivity and increase your efficiency so that you may generate more profit.

This operator's manual has been designed into four major sections: Foreword, Safety Precautions, Installation Instructions and Parts Breakdown.

This **SAFETY ALERT SYMBOL** indicates important safety messages in the manual. When you see this symbol, be alert to the possibility of **PERSONAL INJURY** and carefully read the message that follows.



The word **NOTE** is used to convey information that is out of context with the manual text. It contains special information such as specifications, techniques and reference information of a supplementary nature.

The word **IMPORTANT** is used in the text when immediate damage will occur to the machine due to improper technique or operation. Important will

apply to the same information as specified by note only of an immediate and urgent nature.

It is the responsibility of the user to read the operator's manual and comply with the safe and correct operating procedure and to lubricate and maintain the product according to the maintenance schedule in the operator's manual.

The user is responsible for inspecting his machine and for having parts repaired or replaced when continued use of the product would cause damage or excessive wear to the other parts.

It is the user's responsibility to deliver his machine to the Yetter dealer who sold him the product for service or replacement of defective parts, which are covered by the warranty policy.

If you are unable to understand or follow the instructions provided in this publication, consult your local Yetter dealer or contact:

YETTER MANUFACTURING CO.

309/776-4111

800/447-5777

309/776-3222 (FAX)

Website: www.yetterco.com

E-mail: info@yetterco.com

WARRANTY

Yetter Manufacturing warrants all products manufactured and sold by it against defects in material. This warranty being expressly limited to replacement at the factory of such parts or products as shall appear to be defective after inspection. This warranty does not obligate the Company to bear cost of labor in replacement of parts. It is the policy of the Company to make improvements without incurring obligations to add them to any unit already sold. No warranty is made or authorized to be made, other than herein set forth. This warranty is in effect for one year after purchase.

DEALER: _____

Yetter Manufacturing warrants its own products only and cannot be responsible for damages to equipment on which mounted.

DEVASTATOR OPERATION CHECKLIST

Please fill this out after the Yetter Stalk Devastator has been installed.

DATE ___/___/___ YETTER KIT # - 5000-___ CORN HEAD MAKE/MODEL_____



COMBINE MAKE/MODEL_____ FRONT TIRE SIZE_____ REAR TIRE SIZE_____

REAR AXLE POSITION_____ SNAPPING ROLLS USING_____ CHOPPING BLADES YES / NO

DECK PLATE ANGLE_____° (USE ANGLE FINDER) SNAPPING ROLL HEIGHT (OPERATING POSITION)_____INCHES

HARVEST SPEED_____MPH HEAD SPEAD_____ ANGLE TORSION ARM (OPERATING POSITION - USE ANGLE FINDER)_____

HEAD CART INFO:

MAKE/MODEL_____ LENGTH_____ TIRE SIZE_____



BE ALERT!

YOUR SAFETY IS INVOLVED.

WATCH OUT FOR THIS SYMBOL. IT POINTS OUT IMPORTANT SAFETY PRECAUTIONS. IT MEANS: "ATTENTION---BECOME ALERT!"

It is your responsibility as an owner, operator, or supervision to know & instruct everyone using this machine at the time of initial assignment & at least annually thereafter, of the proper operation, precautions, & work hazards which exist in the operation of the machine in accordance with OSHA regulations.

Safety Is No Accident

The following safety instructions, combined with common sense, will save your equipment from needless damage and the operator from unnecessary exposure to personal hazard. Pay special attention to the caution notes in the text. Review this manual at least once a year with all operators.

1. Read and understand the operator's manual before operating this machine. Failure to do so is considered a misuse of the equipment.
2. Make sure equipment is secure before operating.
3. Always keep children away from equipment when operating.
4. Make sure everyone that is not directly involved with the operation is out of the work area before beginning operation.
5. Make sure all safety devices, shields, and guards are in place and functional before beginning operation
6. Shut off all power to adjust, service, or clean.
7. Keep hands, feet, and clothing away from moving parts. It is a good idea to remove all jewelry before operating.
8. Inspect the machine periodically during operation for signs of excessive wear, loose fasteners, and unusual noises.

PLEASE READ, VERY IMPORTANT



SECURE THE CORN HEADER AGAINST UNWANTED LOWERING BY APPLYING THE LOCKING MECHANISM ON HYDRAULIC CYLINDERS!

1. Attach head to combine, lock head to combine
2. Raise the head off the ground and engage safety stop on the feeder house cylinder
3. Turn off the combine engine and remove the key

FOLLOW ALL INSTRUCTIONS GIVEN BY THE COMBINE MANUFACTURER

Subject to the size and weight of the corn header, one or two additional hydraulic cylinders may be required.

The combine manufacturer generally keeps corresponding kits readily available for dealers.

Subject to the design of the corn header & the carry capacity of different combines, the steering axel may require the fitting of additional weights & the rear tires be filled with ballast.



FOLLOW ALL INSTRUCTIONS GIVEN BY THE COMBINE MANUFACTURER

BOLT TORQUE





Important: Over tightening hardware can cause as much damage as when under tightening. Tightening hardware beyond the recommended range can reduce its shock load capacity.

All hardware on the 5000 Devastator is either Grade 5 or Grade 8, unless otherwise noted. Grade 5 cap screws are marked with three radial lines on the head. Grade 8 cap screws are marked with six radial lines on the head. If hardware must be replaced, be sure to replace it with hardware of equal size, strength, and thread type. Refer to the torque values chart when tightening hardware.

The chart below is a guide for proper torque. Use it unless a specified torque is called out elsewhere in the manual. Torque is the force applied to the end of the handle or cheater bar, times the length of the bar.

Use a torque wrench wherever possible

The following table shows torque in ft-lbs for coarse thread hardware.

Bolt Diameter and Threads per Inch	 Grade 2	 Grade 5	 A-325	 Grade 8
1/4	6		10	14
5/16	12		20	30
3/8 – 16	25		35	50
7/16 – 14	35		55	80
1/2 – 13	55		85	125
9/16 – 12	75		125	175
5/8 – 11	105		170	235
3/4-10	185		305	425
7/8 – 9	170		445	690
1-8	260		670	1030
1 1/8 – 7	365		900	1460
1 1/4 - 7	515		1275	2060
1 3/8 – 6	675		1675	2700
1 1/2 - 6	900		2150	3500
1 3/4 – 5	1410		3500	5600

INSTALLATION TOOLS REQUIRED:

- Pneumatic or electric impact driver
- 3/4 & 15/16 size sockets
- 10" impact driver extension
- Ratchet
- 3/4, 15/16, & 1 1/8 size wrenches
- 5/16 Allen Wrench
- Torque Wrench



ASSEMBLY INSTRUCTIONS

On some models, the hydraulic cylinder for adjusting the deck plate or stripper plate will need to be relocated. Follow the steps below for relocating the cylinder. See the Devastator mount bracket locations that match the model of your corn head to see if this applies to you.

Step 1: Remove the hyd. cylinder's hydraulic hoses & allow the hydraulic fluid to drain.

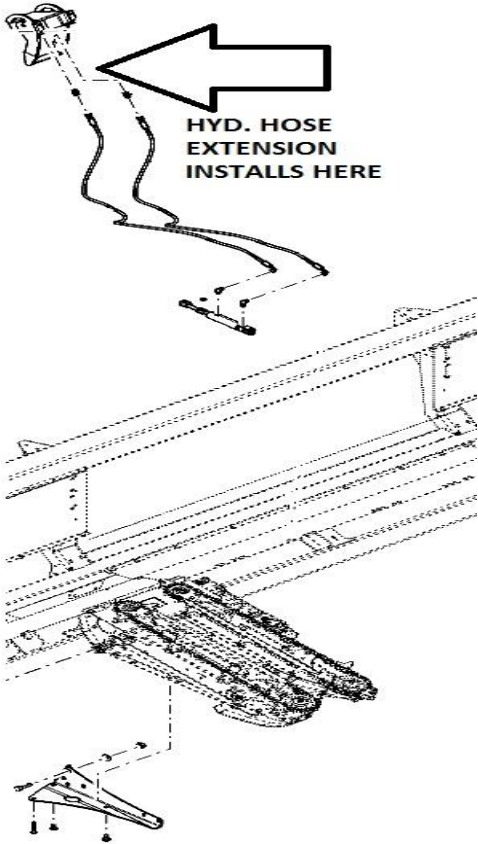
Step 2: Remove the hardware that is used to mount the hyd. cylinder and bracket to the corn head.

NOTE: Taking before photos will help with reassembly of hyd. cylinder & bracket to the corn head in its new location.

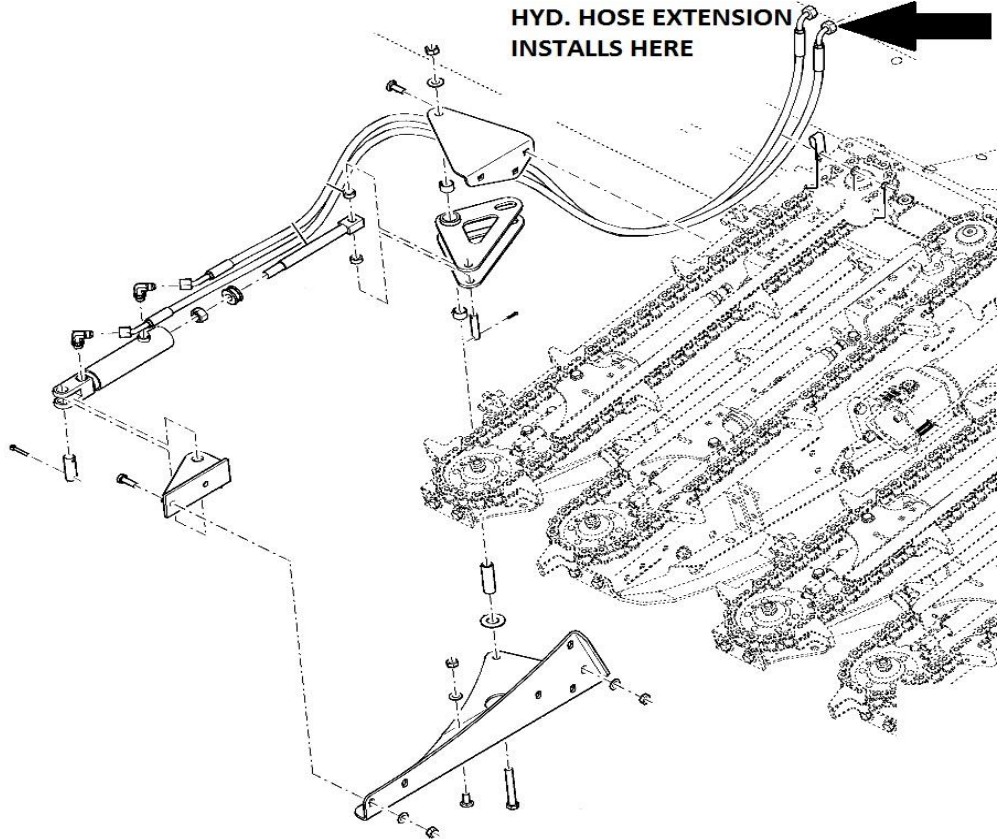
Step 3: Relocate the hyd. cylinder & bracket to a location under a snout that does not get a Devastator mount bracket. Here is a list where the cylinder should be located or be moved to: 4406 should be between 2-3, should be moved. 4408 (2018 – older) should be between 3-4, shouldn't need moved. 4408 (2019 – newer) should be between 3-4, needs moved to between 4-5. 4408 folding should be between 3-4, needs moved to 4-5, 4412 rigid should be between 5-6, should be moved 6-7. 4412 folding should be between 4-5, needs moved to 6-7.

Step 4: Add the hyd. hose extension, 2515-369, between the quick coupler and the existing hose. Some models of the corn head may have hard, formed hoses that connect to the existing flexible hyd. hose & the extension needs installed between the hard, formed hose & flexible hose.

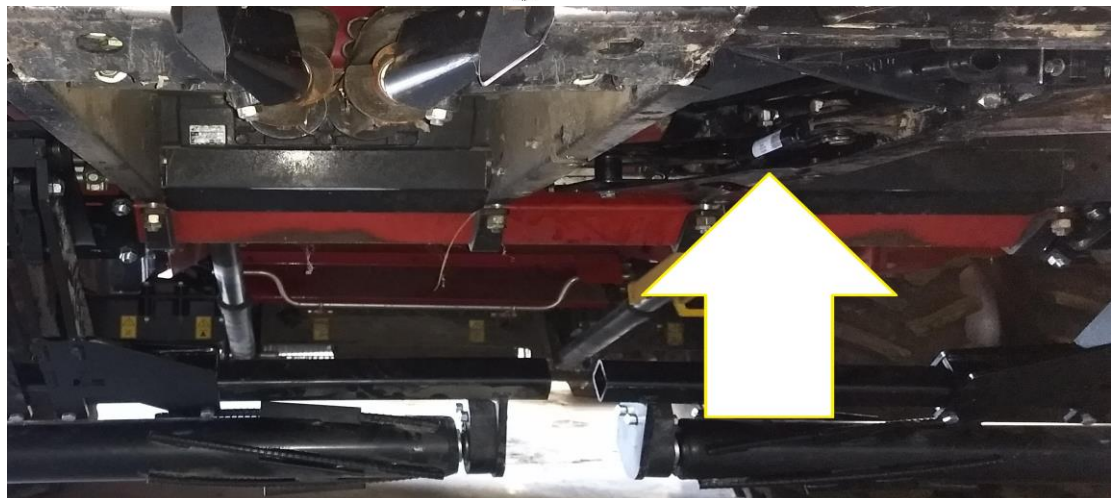
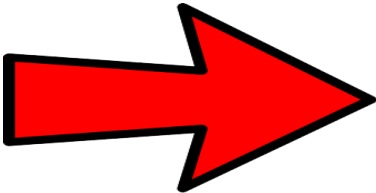
AT QUICK COUPLER



BETWEEN HARD, FORMED HOSE & FLEXIBLE HOSE



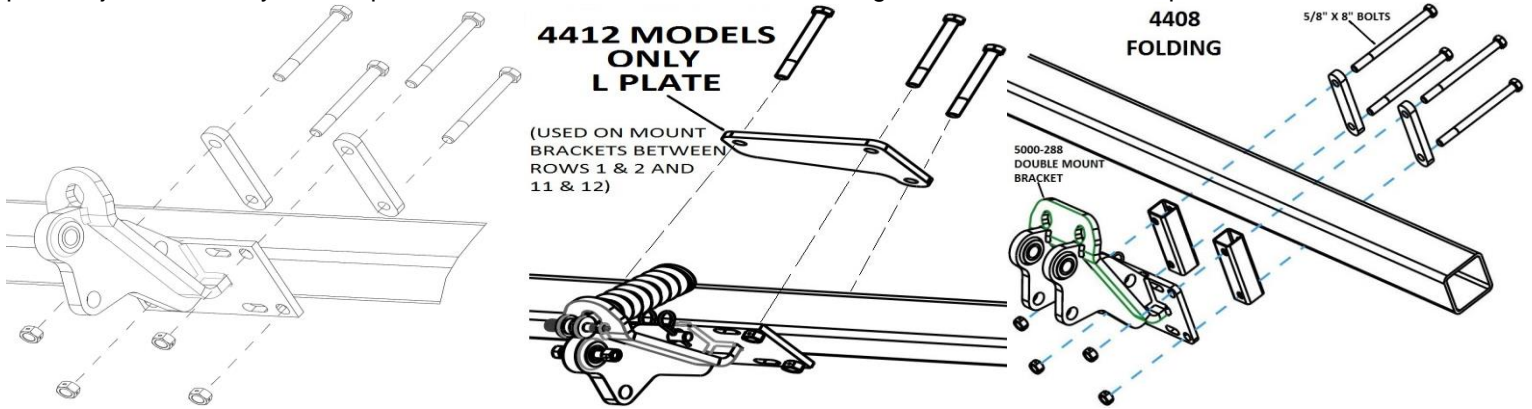
HYDRAULIC CYLINDER
FOR DECK PLATE
ADJUSTMENT
HAS BEEN RELOCATED



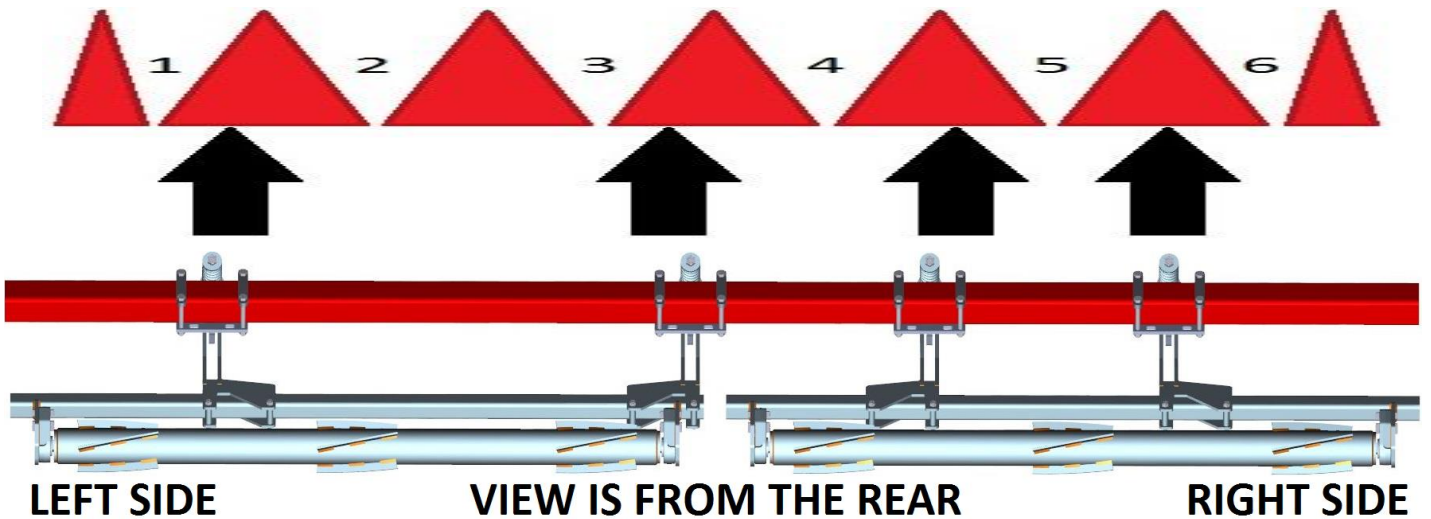
ASSEMBLY INSTRUCTIONS

Step 1: Attach the 5000-260 mount brackets to the frame using 5/8" X 6 bolts, clamp straps, & 5/8" lock hex nuts. 4408 Folding corn heads will use 4) 5000-288 double mount brackets. Between rows 1-2 & 7-8, 5000-460 spacer blocks, 5/8" X 8" bolts will be used. Mounts between rows 3-4 & 5-6 will not use spacer blocks & will use 5/8" X 6" bolts. 4412 rigid corn heads will use an L Plate instead of the clamp straps between rows 1-2 & 11-12.

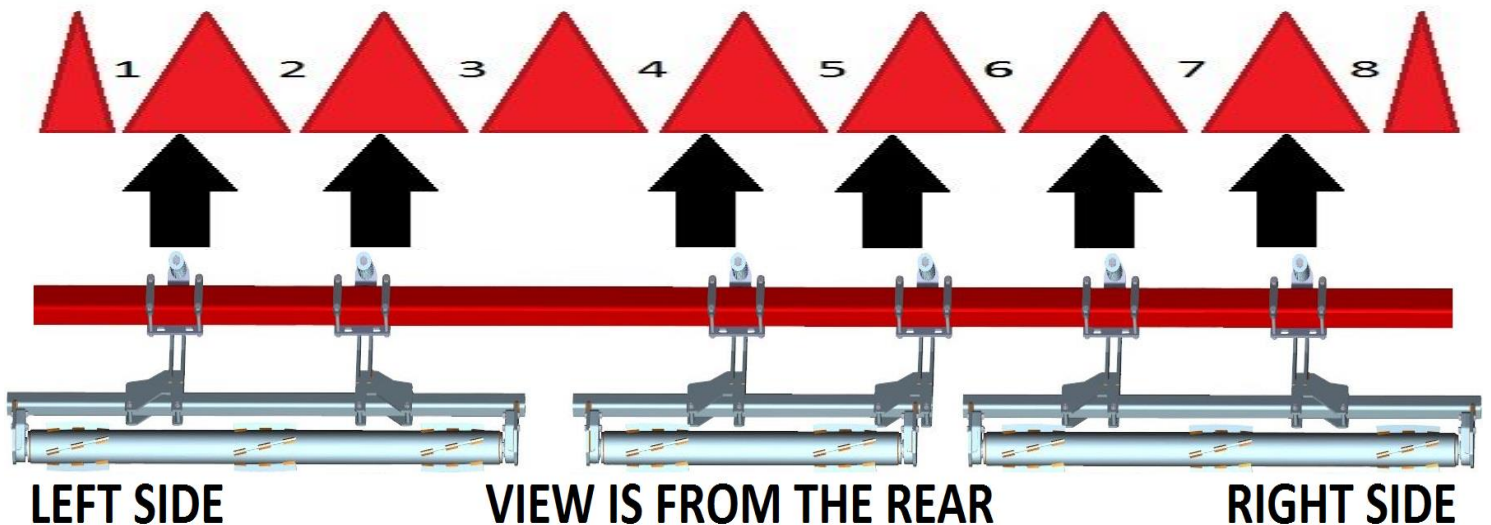
Note: Do not fully tighten hardware until the pivot arms are installed in Step 3. In some situations, the hydraulic cylinder for deck plate adjustments may need repositioned under a different snout. See diagrams for mount bracket placement.



5000-029B – 4406



5000-030B – 4408 (2018 & OLDER)

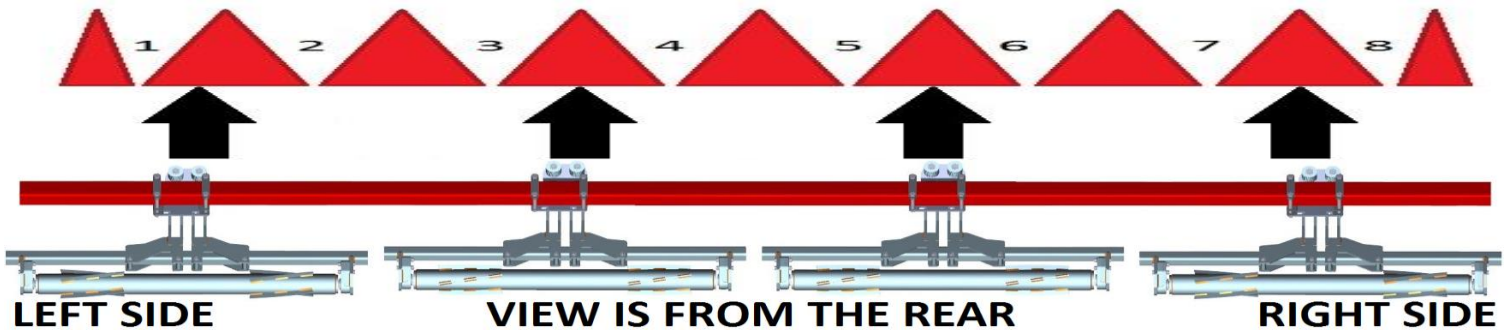


ASSEMBLY INSTRUCTIONS

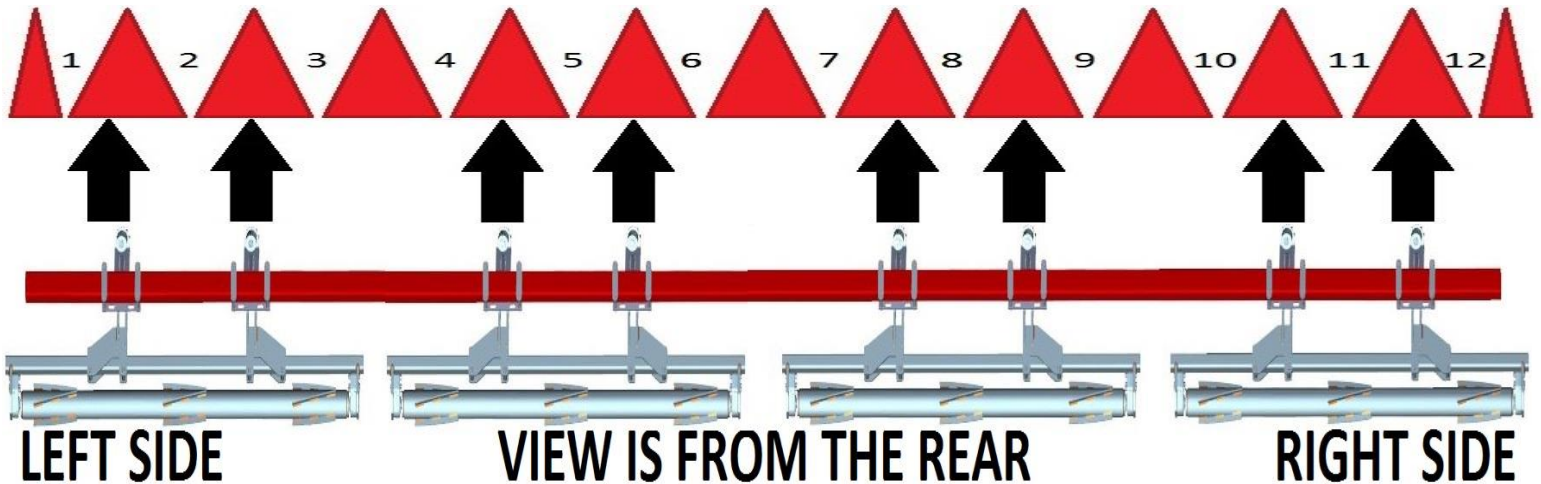
5000-038 – 4408 (2019 & NEWER)



5000-036 – 4408 FOLDING

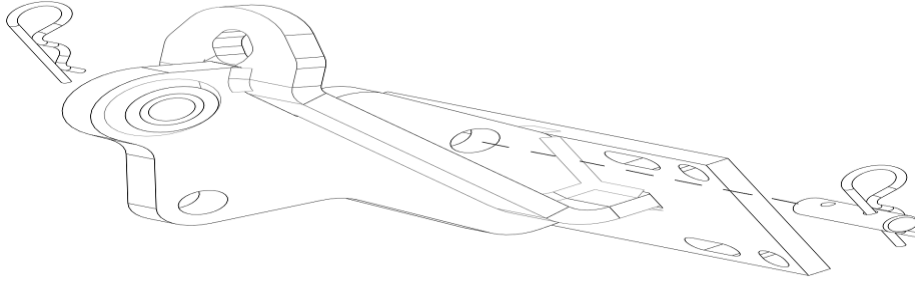


5000-032B – 4412 RIGID
5000-032B – 4412 FOLDING

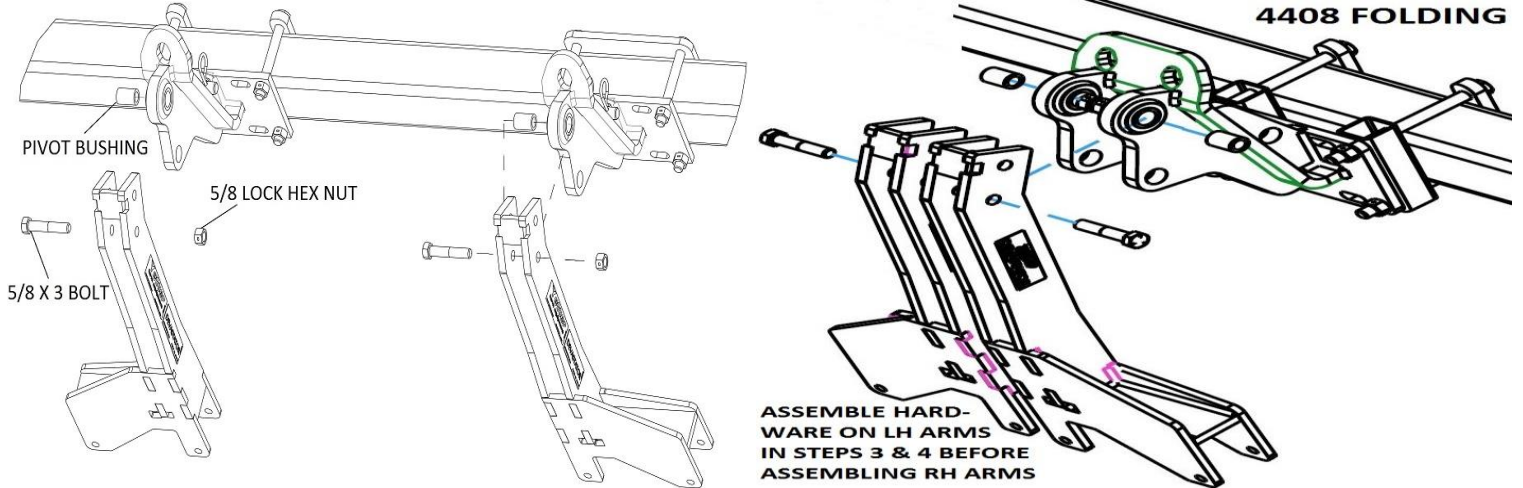


ASSEMBLY INSTRUCTIONS

Step 2: Install the 5000-323 lock-up pin in the storage location on the mount brackets. Secure with the supplied hairpin clips.

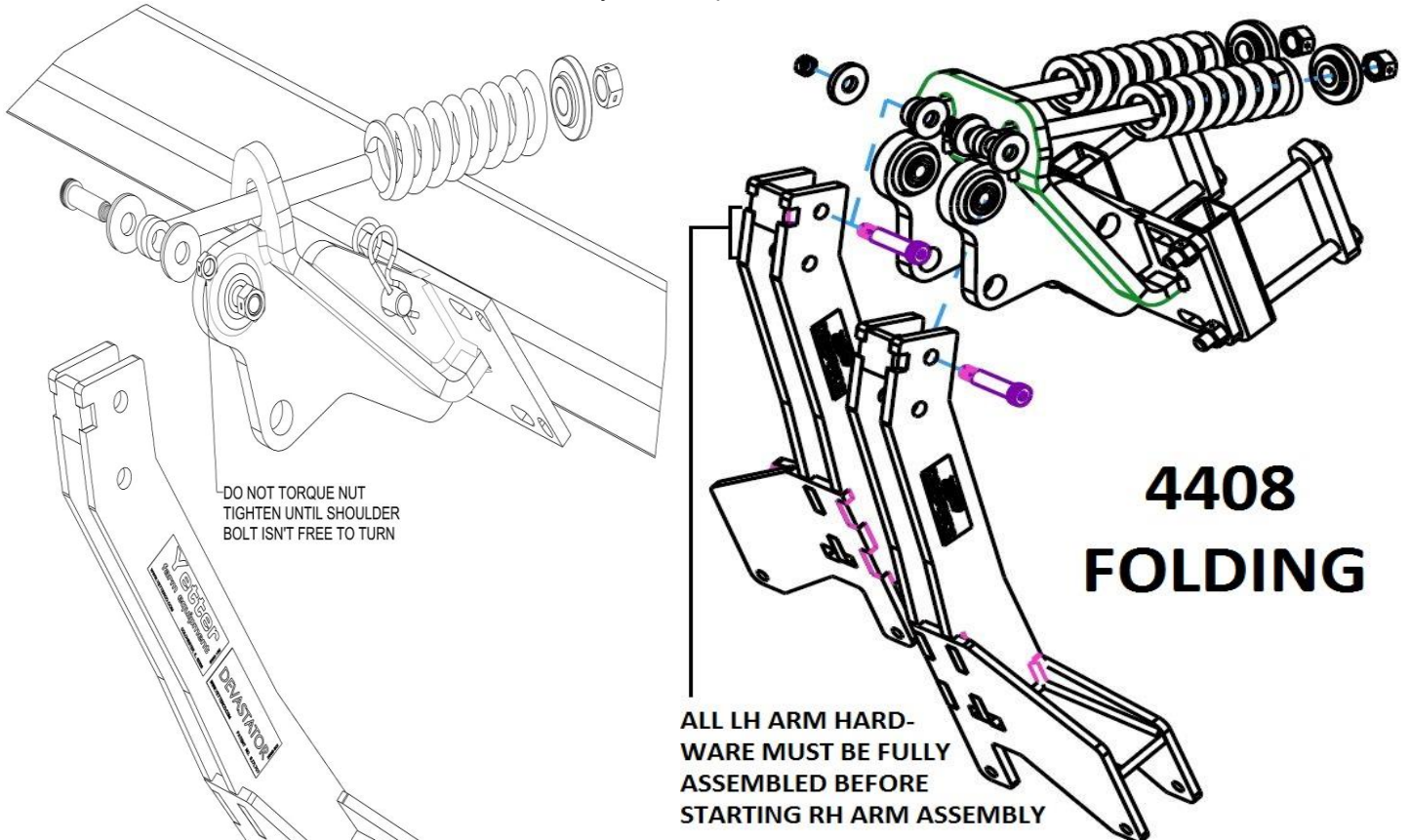


Step 3: Attach the pivot arms to the mount brackets using the 5/8 X 3 bolts, pivot bushings, & lock hex nuts. Fully tighten all hardware. **NOTE:** Make sure the pivot arm orientation matches the diagrams below.



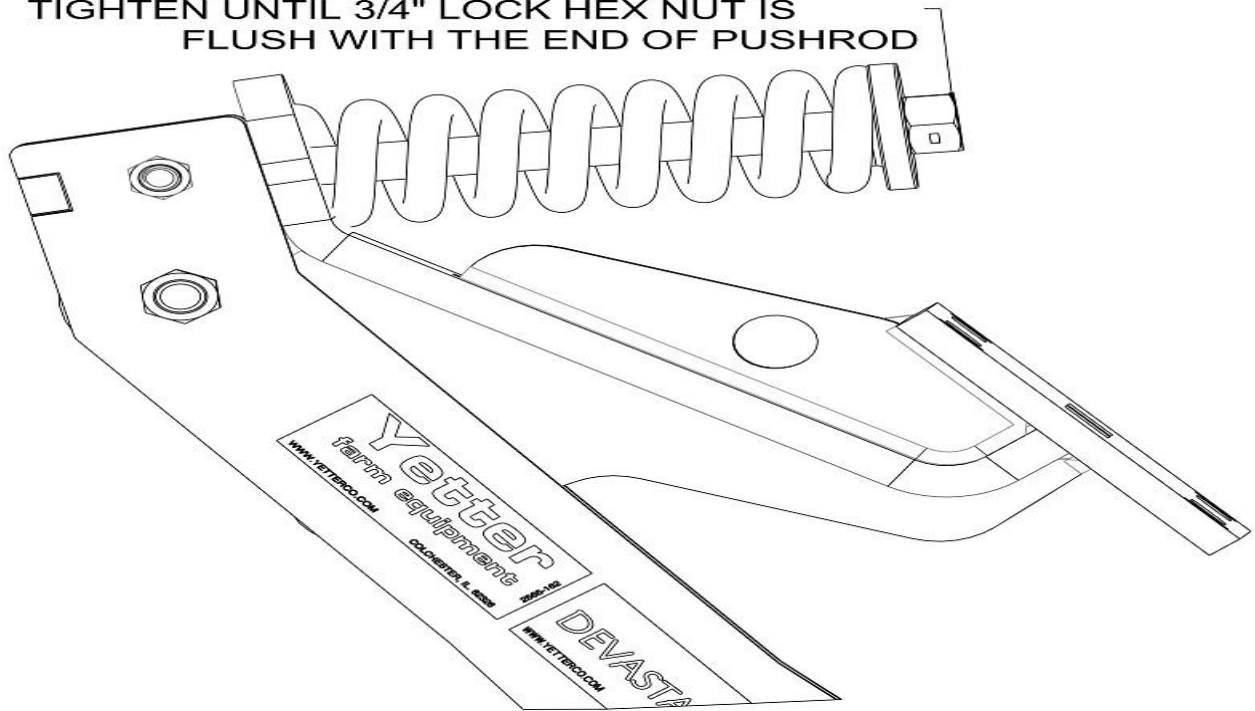
Step 4: Install the pushrods into the mount brackets. Then, attach to the pivot arms with the 5/8 shoulder bolts, washers, & 1/2 jam lock hex nuts. Now install the compression spring, spring bushing, and 3/4 lock hex nuts.

Note: The washers are installed on each side of the "eye" of the pushrod.



ASSEMBLY INSTRUCTIONS

TIGHTEN UNTIL 3/4" LOCK HEX NUT IS FLUSH WITH THE END OF PUSHROD

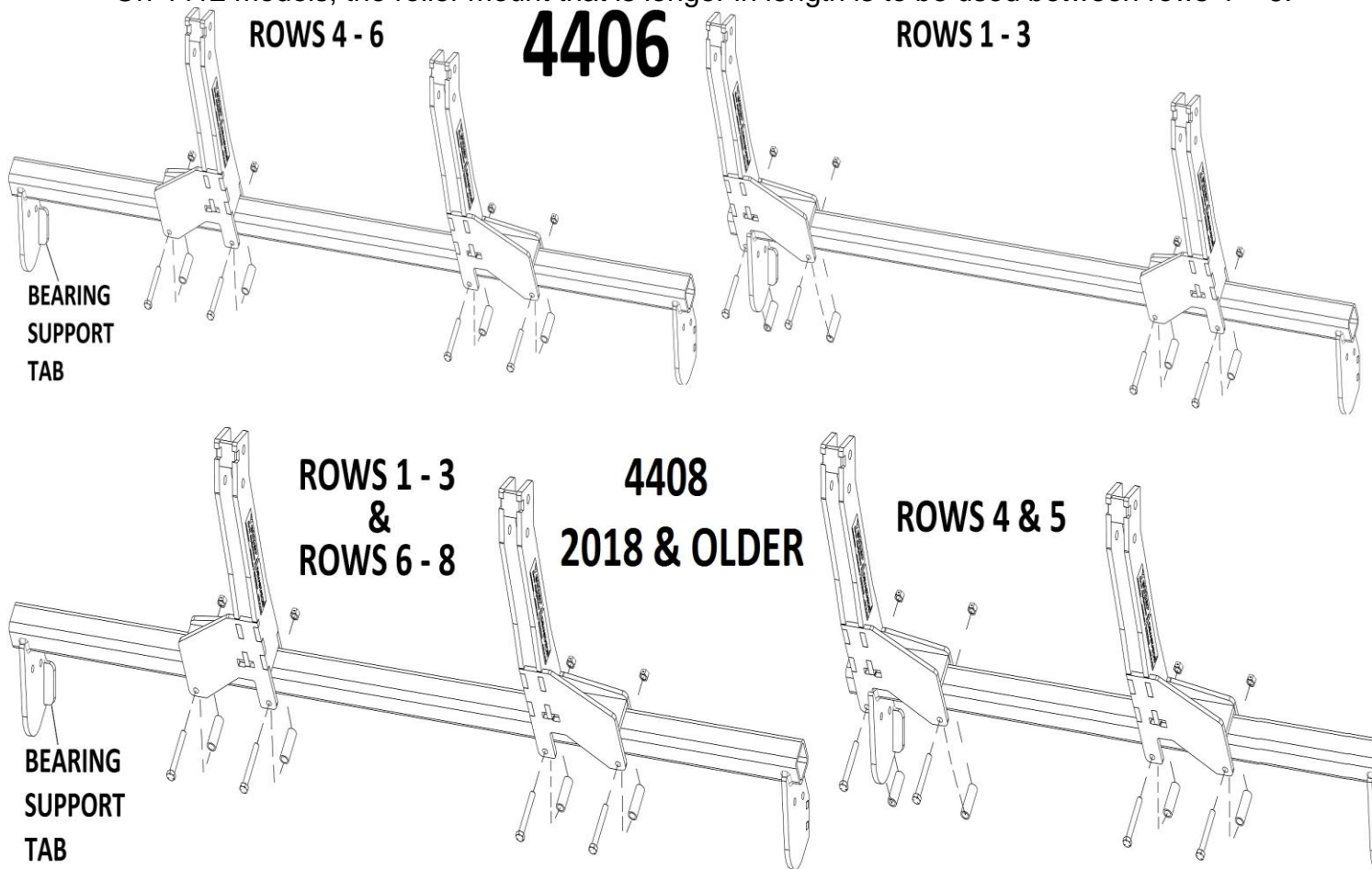


Step 5: Attach the roller mount to the pivot arms using 1/2 X 3-3/4 bolts, spacers, & lock nuts.

NOTE: Make sure the bearing support tabs are on the backside of the bearing mounting plate.

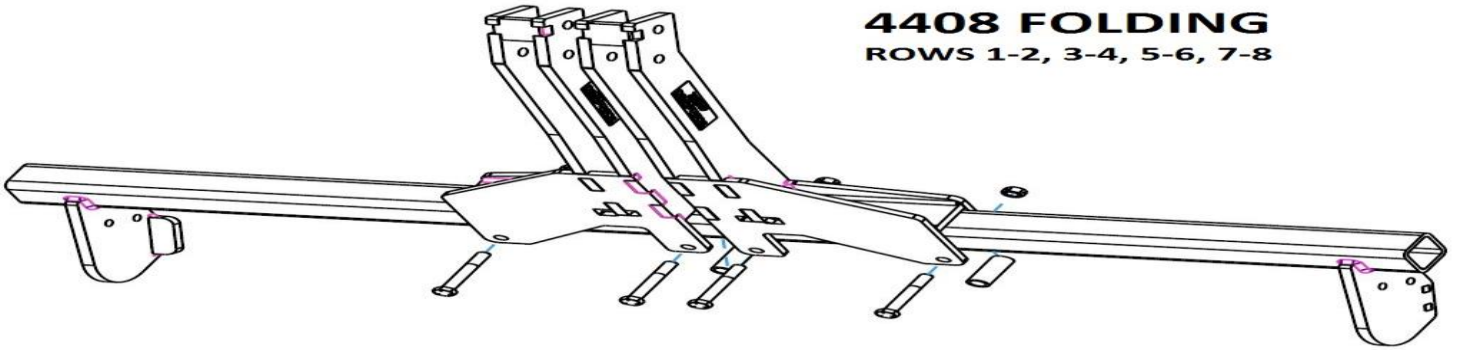
Slide the roller mount side-to-side to clear the end of the corn head. DO NOT tighten hardware.

On 4412 models, the roller mount that is longer in length is to be used between rows 4 – 6.

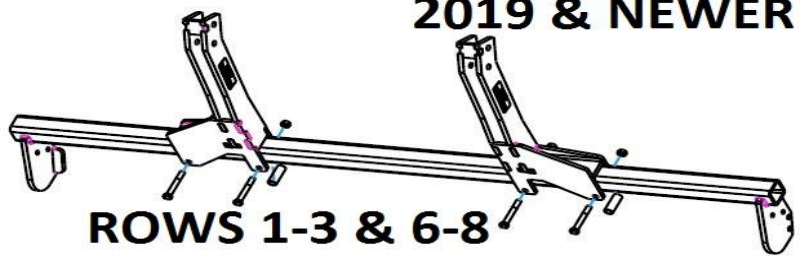


ASSEMBLY INSTRUCTIONS

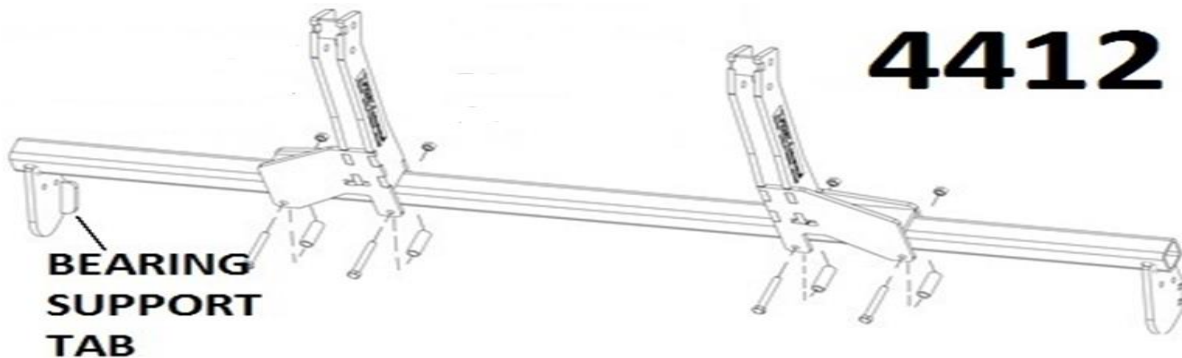
4408 FOLDING
ROWS 1-2, 3-4, 5-6, 7-8



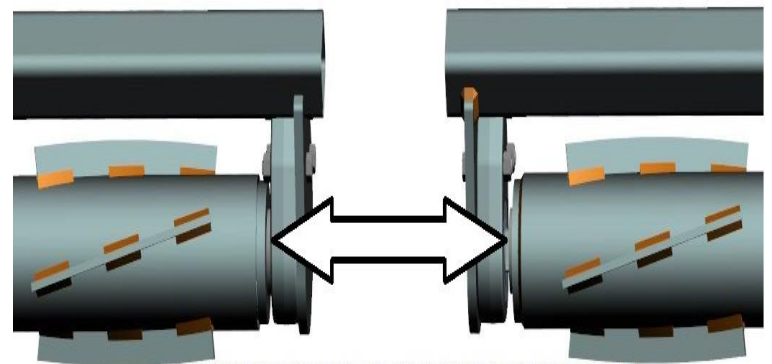
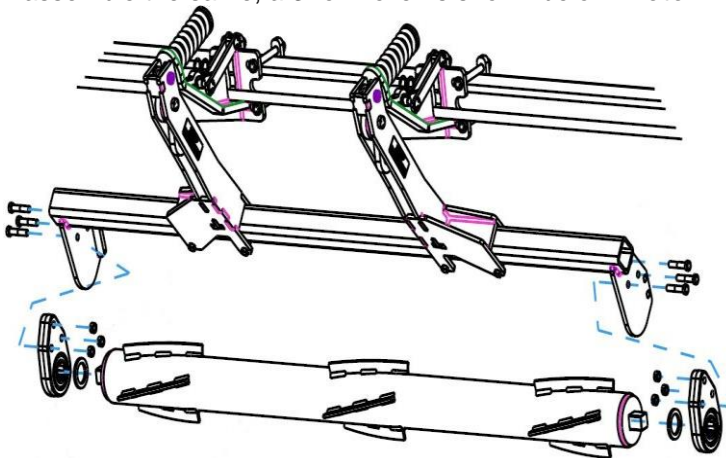
4408
2019 & NEWER



4412



Step 6: Install the shims & bearings onto the rollers. Attach the bearing/roller assembly to the roller mount using the 1/2 X 2 1/2" bolts & lock nuts. Slide the roller mount side to side as need to center the traction bar on the row. 2 row & 3 row roller assemble the same, a 3 row roller is shown below. **Note:** The extended race of the bearing will face toward the roller.



THE SIDE OF THE BEARING ASSEMBLY WHERE THE BEARING IS PROTRUDING MUST BE INSTALLED TOWARD THE ROLLER!

NOTE: BEARING HOUSING SHOULD BE LUBRICATED WITH POLYUREA GREASE BEFORE USE AND THEN EVERY 100 HOURS OF OPERATION



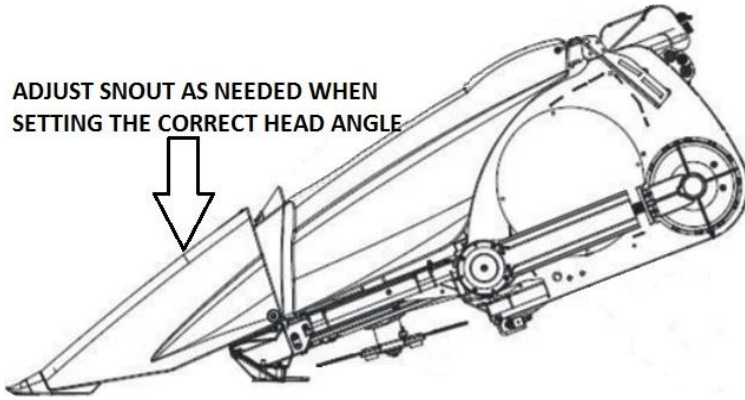
OPERATION

CORN HEAD ANGLE NEEDS TO BE ADJUSTED BETWEEN 22 – 25° FOR OPTIMUM DEVASTATOR PERFORMANCE. USE THE 5000-455 TO CHECK CORN HEAD ANGLE:

- Put the combine on a level surface. Lower corn head to your normal working head height.
- Place the magnetic protractor on the stripper plate to get the angle. Adjust the feeder house as needed, fore or aft, to achieve 22 – 25 degrees.

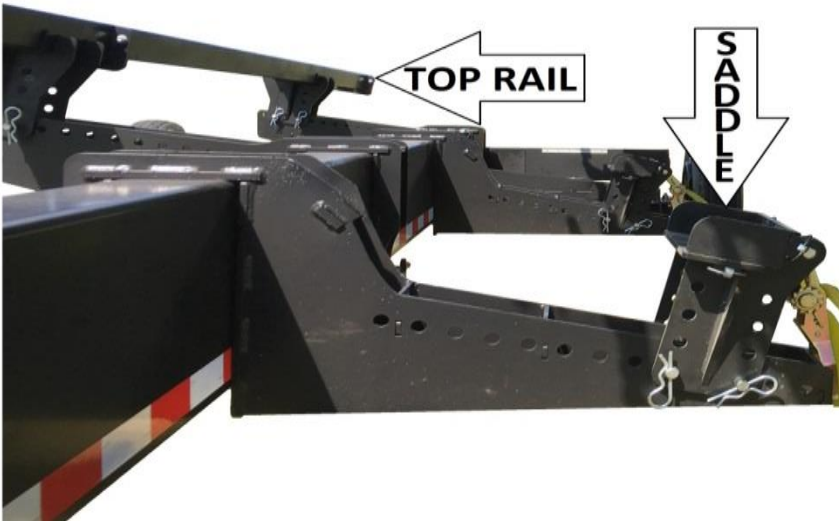


ADJUST SNOOT AS NEEDED WHEN SETTING THE CORRECT HEAD ANGLE



STORAGE/TRANSPORT

- Head cart may need adjusted to fit the head with devastator correctly. E.g. raising or fore/aft adjustment of saddles/top rail on the head cart.
- If head cart does not have these adjustments, adding a tube extension to top rail or adding extension to saddle/corn head may be required.
- Side to side tilt may need used to clear taller head cart tires or locking the devastator up.
- When disconnecting from the head, leaving pressure on the torsion pivot of the devastator will not damage the devastator.

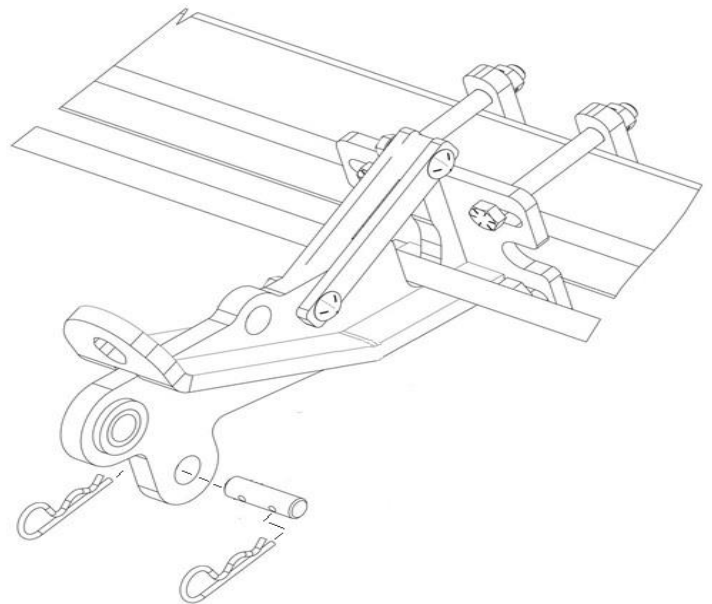


BEARING REPLACEMENT

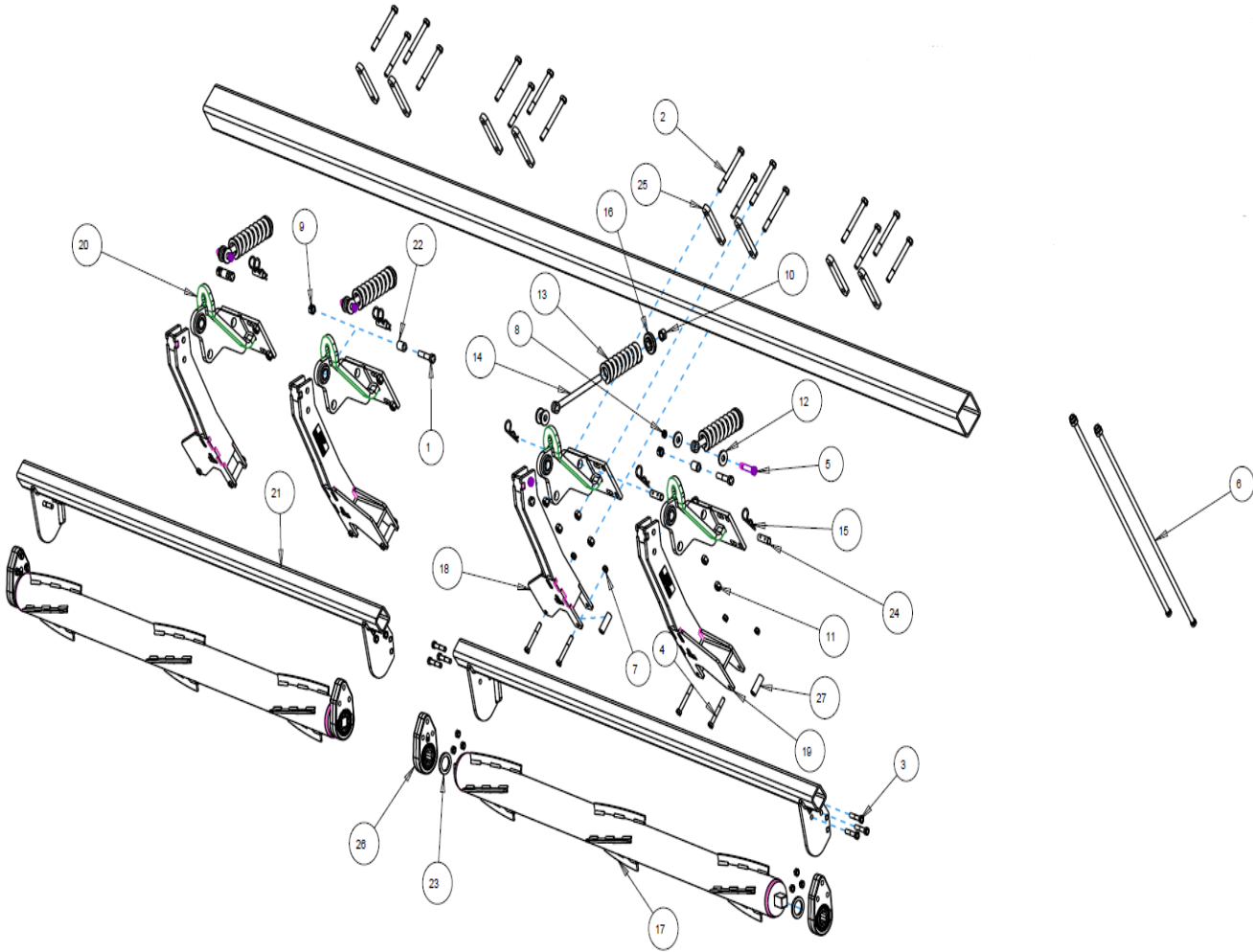
Put the bearing housing in a vice, use a pry bar to turn the bearing in the housing parallel with the slots, remove the old bearing, apply anti-seize lubricant to the interior of the bearing housing, insert the new bearing in the slots, & use a pry bar to move back to position. Wobble the bearing around to help work the lubricant into the outer race of the bearing.



LOCKING UP THE 5000 SERIES STALK DEVASTATOR



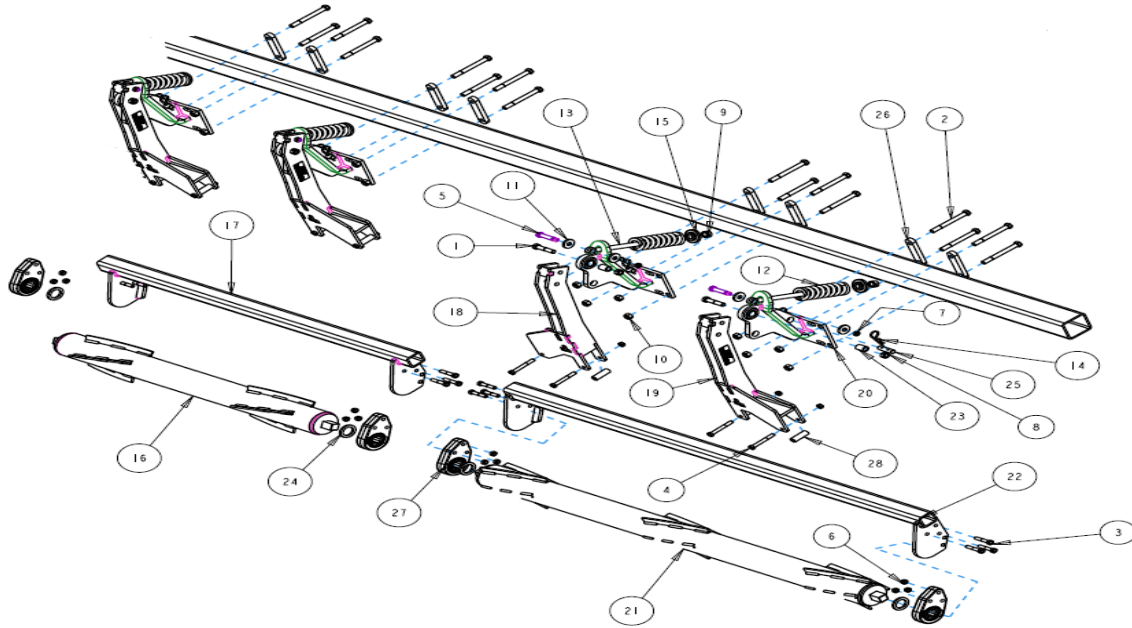
5000-029B PART IDENTIFICATION - 4406



5000-029B PART IDENTIFICATION - 4406

ITEM	PART #	DESCRIPTION	QUANTITY
1	2502-325	5/8 – 11 X 3 CAP SCREW GRADE 5	4
2	2502-352	5/8 – 11 X 6 CAP SCREW GRADE 8	16
3	2502-353	½ – 13 X 2.5 CAP SCREW GRADE 8	12
4	2502-365	½– 13 X 3.75 CAP SCREW GRADE 5	8
5	2510-121	5/8 DIAMETER SHOULDER BOLT THREAD ½ – 13	4
6	2515-369	HOSE 35" ORFS M-F SWIVEL ENDS	2
7	2520-362	½ – 13 LOCK HEX NUT GRADE 8	20
8	2520-364	½ – 13 HEX JAM LOCK NUT	4
9	2520-459	5/8 – 11 LOCK HEX NUT GRADE 5	4
10	2520-515	¾– 10 LOCK HEX NUT GRADE 2	4
11	2520-603	5/8-11 TOP LOCK HEX NUT GRADE 8	16
12	2526-449	5/8 FLAT WASHER ¼" THICK	8
13	2550-709	½" WIRE 2.5"OD X 1.5"ID X 7.25" COMPRESSION SPRING	4
14	2570-126	¾ X 10 EYEBOLT	4
15	2570-465	HAIRPIN COTTER	8
16	2975-302	SPRING BUSHING	4
17	5000-211B	ROLLER 76"	2
18	5000-256	LEFT HAND ARM 19"	2
19	5000-259	RIGHT HAND ARM 19" RH	2
20	5000-260	MOUNT CASE 4400	4
	2528-369	1.380OD X 1.00ID X 1.25L, BEARING SLEEVE	1/MOUNT
21	5000-261	ROLLER MOUNT 3 ROW LONG	2
22	5000-318	PIVOT BUSHING	4
23	5000-322	SHIM WASHER	4
24	5000-323	LOCK UP PIN	4
25	5000-341	4" MOUNT STRAP	8
26	5000-355	BEARING ASSEMBLY	4
	2550-059	DEVASTATOR BEARING (BEARING ONLY)	4
27	5000-378	SPACER BUSHING	8

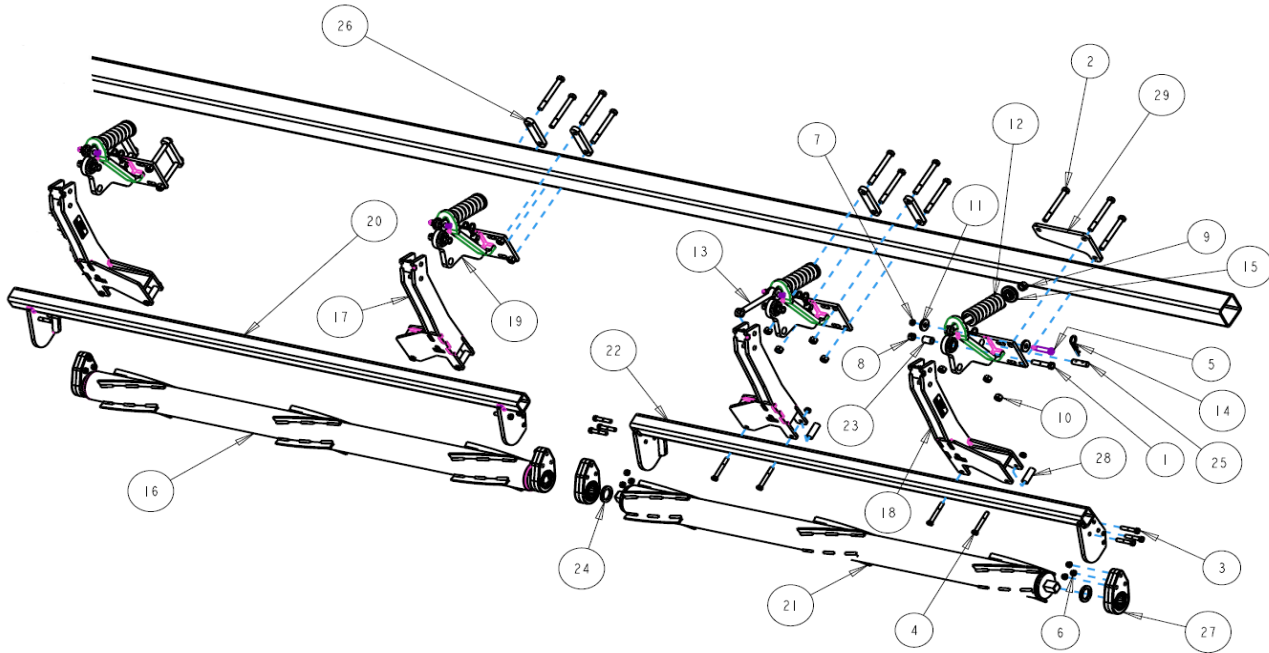
5000-030C PART IDENTIFICATION – 4408 (2018 – OLDER)



5000-030C PART IDENTIFICATION – 4408 (2018 – OLDER)

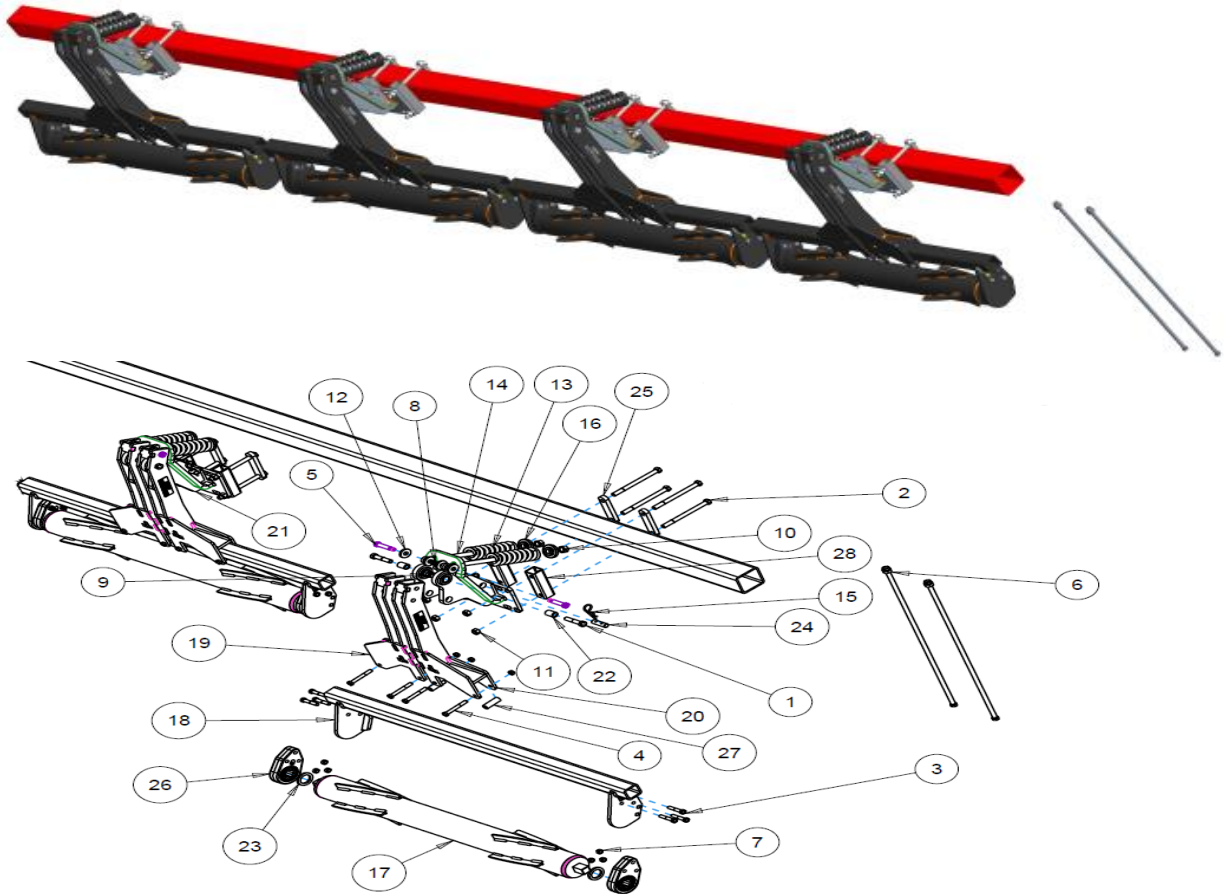
ITEM	PART #	DESCRIPTION	QUANTITY
1	2502-325	5/8 – 11 X 3 CAP SCREW GRADE 5	6
2	2502-352	5/8 – 11 X 6 CAP SCREW GRADE 8	24
3	2502-353	½" – 13 X 2.5 CAP SCREW GRADE 8	18
4	2502-365	½" – 13 X 3.75 CAP SCREW GRADE 5	12
5	2510-121	5/8" DIAMETER SHOULDER BOLT ½" – 13 THREAD	6
6	2520-362	½" – 13 LOCK HEX NUT GRADE 8	30
7	2520-364	½" – 13 HEX JAM LOCK NUT	6
8	2520-459	5/8" – 11 LOCK HEX NUT GRADE 5	6
9	2520-515	¾" – 10 LOCK HEX NUT GRADE 2	6
10	2520-603	5/8-11 TOP LOCK HEX NUT GRADE 8	24
11	2526-449	5/8 FLAT WASHER ¼" THICK	12
12	2550-709	½" WIRE 2.5"OD X 1.5"ID X 7.25" COMPRESSION SPRING	6
13	2570-126	¾" X 10" EYEBOLT	6
14	2570-465	HAIRPIN COTTER	12
15	2975-302	SPRING BUSHING	6
16	5000-203B	ROLLER 48"	1
17	5000-255	ROLLER MOUNT 2 ROW	1
18	5000-256	LEFT HAND ARM 19"	2
19	5000-259	RIGHT HAND ARM 19"	4
20	5000-260	MOUNT CASE 4400	6
	2528-369	1.380OD X 1.00ID X 1.25L, BEARING SLEEVE	1/MOUNT
21	5000-272	3 ROW ROLLER 71.5"	2
22	5000-275A	ROLLER MOUNT 3 ROW	2
23	5000-318	PIVOT BUSHING	6
24	5000-322	SHIM WASHER	6
25	5000-323	LOCK UP PIN	6
26	5000-341	4" MOUNT STRAP	12
27	5000-355	BEARING ASSEMBLY	6
	2550-059	DEVASTATOR BEARING (BEARING ONLY)	6
28	5000-378	SPACER BUSHING	12

5000-032C PART IDENTIFICATION 4412 FOLDING OR RIGID



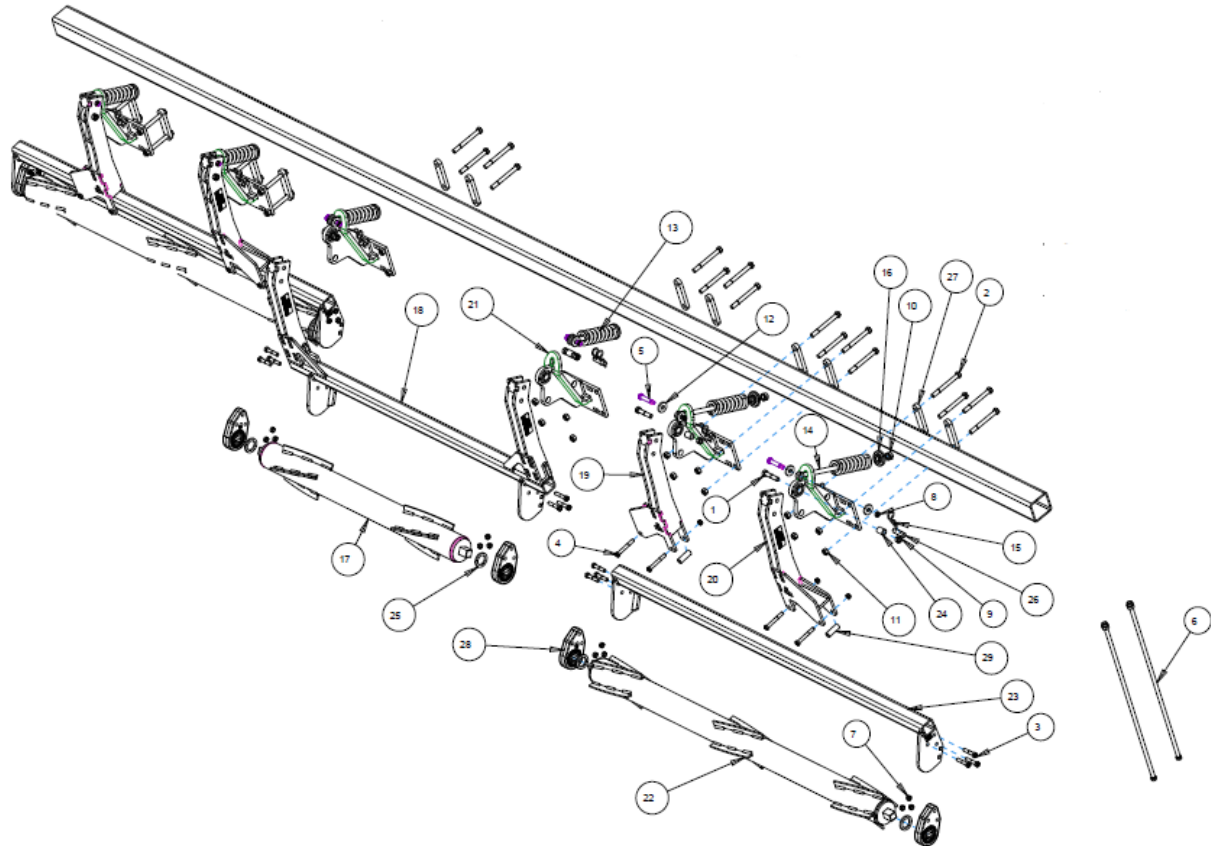
ITEM	PART #	DESCRIPTION	QUANTITY
1	2502-325	5/8 - 11 X 3 CAP SCREW GRADE 5	8
2	2502-352	5/8 - 11 X 6 CAP SCREW GRADE 8	32
3	2502-353	1/2 - 13 X 2.5 CAP SCREW GRADE 8	24
4	2502-365	1/2 - 13 X 3.75 CAP SCREW GRADE 5	16
5	2510-121	5/8 DIAMETER SHOULDER BOLT THREAD 1/2 - 13	8
6	2520-362	1/2 - 13 LOCK HEX NUT GRADE 8	40
7	2520-364	1/2 - 13 HEX JAM LOCK NUT	8
8	2520-459	5/8 - 11 LOCK HEX NUT GRADE 5	8
9	2520-515	3/4 - 10 LOCK HEX NUT GRADE 2	8
10	2520-603	5/8-11 TOP LOCK HEX NUT GRADE 8	32
11	2526-449	5/8 FLAT WASHER 1/4" THICK	16
12	2550-709	1/2" WIRE 2.5"OD X 1.5"ID X 7.25" COMPRESSION SPRING	8
13	2570-126	3/8" X 10" EYEBOLT	8
14	2570-465	HAIRPIN COTTER	16
15	2975-302	SPRING BUSHING	8
16	5000-211B	ROLLER 76"	1
17	5000-256	LEFT HAND ARM 19"	4
18	5000-259	RIGHT HAND ARM 19"	4
19	5000-260	MOUNT, CASE 4400	8
	2528-369	1.380OD X 1.00ID X 1.25L, BEARING SLEEVE	1/MOUNT
20	5000-261	ROLLER MOUNT 3 ROW LONG	1
21	5000-272	3 ROW ROLLER 71.5"	3
22	5000-275A	3 ROW ROLLER MOUNT	3
23	5000-318	PIVOT BUSHING	8
24	5000-322	SHIM WASHER	8
25	5000-323	LOCK UP PIN	8
26	5000-341	4" MOUNT STRAP	16
27	5000-355	BEARING ASSEMBLY	8
	2550-059	DEVASTATOR BEARING (BEARING ONLY)	8
28	5000-378	SPACER BUSHING	16
29	5000-390	L CLAMP PLATE	2

5000-036 PART IDENTIFICATION 4408 FOLDING



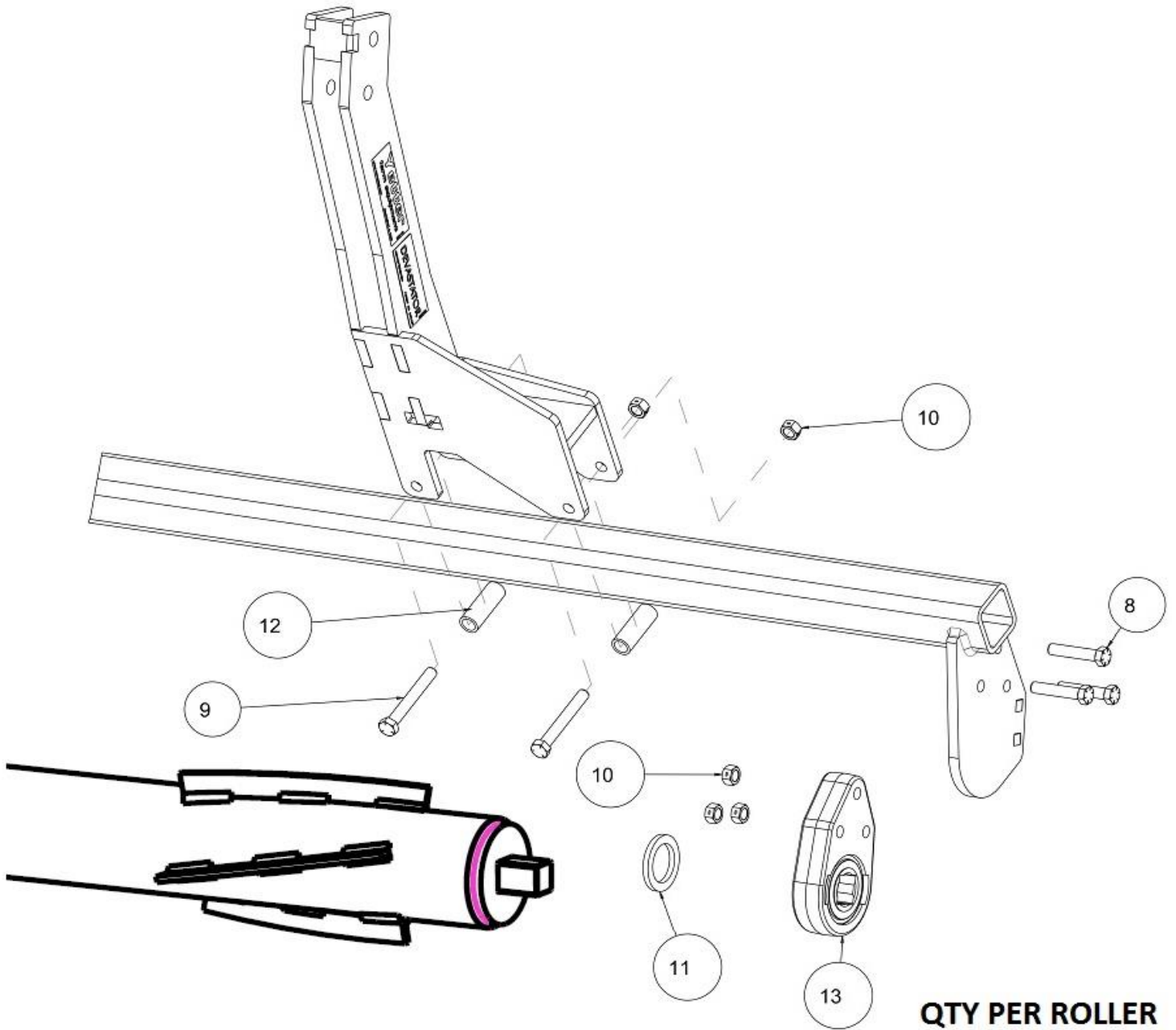
ITEM	PART #	DESCRIPTION	QUANTITY
1	2502-325	5/8 – 11 X 3 CAP SCREW GRADE 5	8
2	2502-342	5/8 – 11 X 8 CAP SCREW GRADE 8	16
3	2502-353	½ – 13 X 2.5 CAP SCREW GRADE 8	24
4	2502-365	½ – 13 X 3.75 CAP SCREW GRADE 5	16
5	2510-121	5/8 DIAMETER SHOULDER BOLT THREAD ½" – 13	8
6	2515-369	HOSE 35" ORFS M – F SWIVEL ENDS	2
7	2520-362	½– 13 LOCK HEX NUT	40
8	2520-364	½ – 13 JAM HEX NUT	8
9	2520-459	5/8 – 11 LOCK HEX NUT GRADE 5	8
10	2520-515	¾ – 10 LOCK HEX NUT GRADE 2	8
11	2520-603	5/8 TOP LOCK HEX NUT GRADE 8	16
12	2526-449	5/8 FLAT WASHER ¼" THICK	16
13	2550-709	½ WIRE 2.5 OD X 1.5 ID X 7.25 COMPRESSION SPRING	8
14	2570-126	¾ X 10 EYEBOLT	8
15	2570-465	HAIRPIN COTTER	16
16	2975-302	SPRING BUSHING	8
17	5000-203B	ROLLER 48"	4
18	5000-255	ROLLER MOUNT	4
19	5000-256	LEFT HAND ARM 19"	4
20	5000-259	RIGHT HAND ARM 19"	4
21	5000-288	DOUBLE MOUNT CASE 4408	4
	2528-369	1.3800D X 1.00ID X 1.25L, BEARING SLEEVE	2/MOUNT
22	5000-318	PIVOT BUSHING	8
23	5000-322	SHIM WASHER	8
24	5000-323	LOCK UP PIN	8
25	5000-341	4" MOUNT STRAP	8
26	5000-355	BEARING ASSEMBLY	8
	2550-059	DEVASTATOR BEARING (BEARING ONLY)	8
27	5000-378	SPACER BUSHING	16
28	5000-460	1.75" SPACER BLOCK	8

5000-038A PART IDENTIFICATION 4408 (2019 – NEWER)



5000-038A PART IDENTIFICATION 4408 (2019 – NEWER)

ITEM	PART #	DESCRIPTION	QUANTITY
1	2502-325	5/8 – 11 X 3 CAP SCREW GRADE 5	6
2	2502-352	5/8 – 11 X 6 CAP SCREW GRADE 8	24
3	2502-353	½ – 13 X 2.5 CAP SCREW GRADE 8	18
4	2502-365	½– 13 X 3.75 CAP SCREW GRADE 5	8
5	2510-121	5/8 DIAMETER SHOULDER BOLT THREAD ½ – 13	6
6	2515-369	HOSE 35" ORFS M-F SWIVEL ENDS	2
7	2520-362	½ – 13 LOCK HEX NUT GRADE 8	26
8	2520-364	½ – 13 HEX JAM LOCK NUT	6
9	2520-459	5/8 – 11 LOCK HEX NUT GRADE 5	6
10	2520-515	¾– 10 LOCK HEX NUT GRADE 2	6
11	2520-603	5/8-11 TOP LOCK HEX NUT GRADE 8	24
12	2526-449	5/8 FLAT WASHER ¼" THICK	12
13	2550-709	½" WIRE 2.5"OD X 1.5"ID X 7.25" COMPRESSION SPRING	6
14	2570-126	¾ X 10 EYEBOLT	6
15	2570-465	HAIRPIN COTTER	12
16	2975-302	SPRING BUSHING	6
17	5000-203B	ROLLER 48	1
18	5000-241	PIVOT ARM WIDE 2 ROW	1
19	5000-256	LEFT HAND ARM 19"	2
20	5000-259	RIGHT HAND ARM 19" RH	2
21	5000-260	MOUNT CASE 4400	6
	2528-369	1.380OD X 1.00ID X 1.25L, BEARING SLEEVE	1/MOUNT
22	5000-272	3 ROW 30 ROLLER	2
23	5000-275A	3 ROW ROLLER MOUNT	2
24	5000-318	PIVOT BUSHING	6
25	5000-322	SHIM WASHER	6
26	5000-323	LOCK UP PIN	6
27	5000-341	4" MOUNT STRAP	12
28	5000-355	BEARING ASSEMBLY	6
	2550-059	DEVASTATOR BEARING (BEARING ONLY)	6
29	5000-378	SPACER BUSHING	8



QTY PER ROLLER

ITEM	PART #	DESCRIPTION	QTY
8	2502-353	1/2-13 X 2 1/2HHCS GR8 ZYD	6
9	2502-365	1/2-13 X 3-3/4 HHCS GR5 YD	4
10	2520-357	1/2-13 LOCK HEX NUT, GR A, ZP	10
11	5000-322	SHIM WASHER ZP	2
12	5000-378	SPACER BUSHING	4
13	5000-355	BEARING ASSEMBLY	2
	2550-059	DEVASTATOR BEARING ONLY (SERVICE PART)	2

TROUBLESHOOTING

ISSUE	CAUSE	CORRECTIVE ACTION
Residue Plugging	<ol style="list-style-type: none"> 1. Incorrect Head Angle 2. Roller Mount Tube incorrectly installed 3. Pivot arm orientation incorrect 4. Bearing installed incorrectly 5. Intermeshing snapping rolls 6. Too much Spring Tension 	<ol style="list-style-type: none"> 1. Adjust head angle to 23 – 25 degrees 2. Make sure the Bearing Support Tab is on the backside of the Roller Mount Tube 3. Reposition the pivot arm so that it offsets under the snout & not under the row 4. Make sure the side of the bearing that protrudes outside of the cast housing is facing toward the roller (each roller should spin freely by hand) 5. Order the 5000-080 Set Back Kit (order 2 per roller) 6. Back the nut off of the push rod until the nut is flush
Stalk aren't "devastated"	<ol style="list-style-type: none"> 1. Insufficient spring down pressure 2. Operating corn head too high 	<ol style="list-style-type: none"> 1. Tighten push rod nut on spring bushing more 2. Lower corn head until the rollers engage
Corn Head won't fit on head cart	<ol style="list-style-type: none"> 1. Devastators bottom out 2. Roller won't clear cart tire 3. Header parking stand not touching the head cart saddle 	<ol style="list-style-type: none"> 1. Adjust top rail & saddles higher on cart 2. Order 5000-082 Lift Kit (raises roller 2") 3. Slide the header parking stand down until contact with head cart saddle is made.





A Tradition of Solutions since 1930

Yetter Farm Equipment Co

PO BOX 358 109 S. McDonough

Colchester, IL 62326-0358

Phone: 309-776-4111

Toll Free: 800-447-5777

Email: info@yetterco.com

For updated models and manuals visit the Yetter website:

www.yetterco.com

© Yetter Farm Equipment Co. All Rights Reserved