



3800 SERIES HEAVY DUTY

FOLDING TOOLBAR

TOOLBAR HINGE IMPROVEMENT KIT

3800-190 SINGLE FRAME

3800-191 DOUBLE FRAME

2565-986 02/2021

YETTER MANUFACTURING CO.

FOUNDED 1930

Colchester, IL 62326-0358

Toll free: 800/447-5777

309/776-3222 (Fax)

Website: www.yetterco.com

E-mail: info@yetterco.com

YETTER



SAFETY PRECAUTIONS

You can make your farm a safer place to live and work if you observe the safety precautions given. Study these precautions carefully and insist that those working with you and for you follow them.

Finally, remember this: an accident is usually caused by someone's carelessness, neglect or oversight.



DANGER

Inspect and replace worn or frayed hydraulic hose, keep all connections tight. Escaping hydraulic fluid under pressure can have sufficient force to penetrate the skin and cause serious personal injury. Fluid escaping from a small hole can be almost invisible. Use a piece of cardboard or wood rather than the hands to search for suspected leaks.



CAUTION

Consult your implement and tractor operator's manual for correct and safe operating practices. Be aware of towed implement width and allow safe clearance.

CAUTION: SAFETY SIGNS

Safety decals are placed on the implement to alert the operator and others to the risk of personal injury or unsafe operation during normal operations and servicing.

1. The safety decals must be kept clean and in good condition to ensure that they are legible.
2. Safety decals must be replaced if they are missing or illegible.
3. When components are replaced during repair or servicing, check that the new components include the necessary safety signs.
4. Replacement safety decals may be obtained from your local Yetter dealer.



WARNING

Never clean, lubricate or adjust a machine that is in motion. Always install the transport lock pins and bracket when transporting for any length of time or on public roadways.

If required to service unit in raised position, be sure to install all transport lock pins and locking bracket.

Be sure the implement is securely locked in the 3-point quick hitch before operating.

Do not allow children to operate this equipment.

Do not allow riders on the tractor or implement.

Use speeds and caution dictated by the terrain being traversed. Do not operate on any slope steep enough to cause tipping or loss of control.

Be sure all personnel are clear of the immediate area before operating.

Read and understand the operator's manual and require all other persons who will operate the equipment to do the same.

In operating on public roadways, where legal, be certain all lighting is operating properly and observe all traffic laws. Ensure slow moving vehicle emblem on tractor is visible.

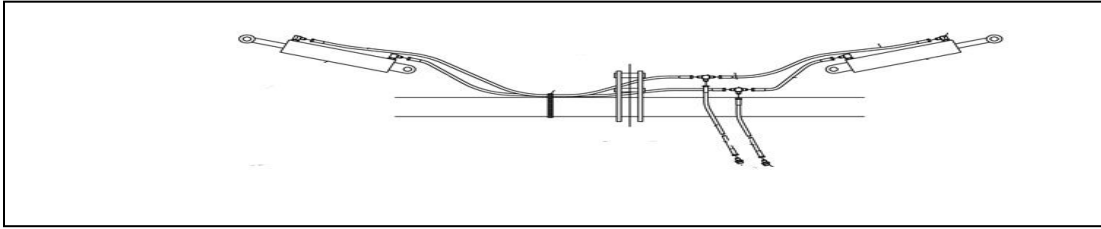
Beware of increased stopping distances and control effort when operating with implements attached.

Be familiar with all tractor and implement controls and be prepared to stop engine and implements quickly in an emergency.

FAILURE TO HEED MAY RESULT IN PERSONAL INJURY OR DEATH

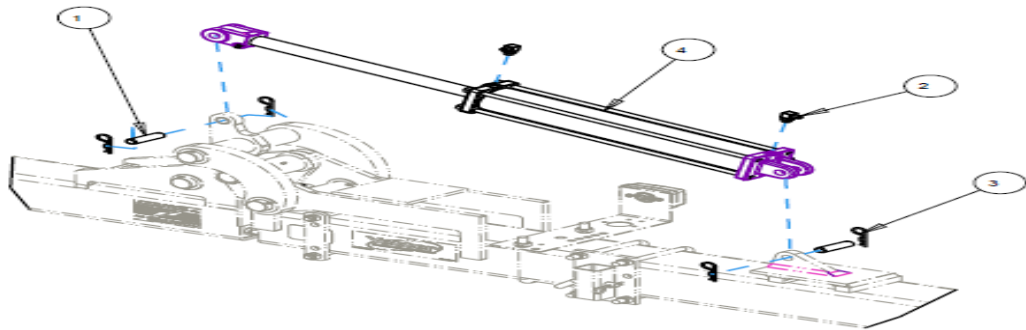


CAUTION STAND CLEAR OF FOLDING WINGS!



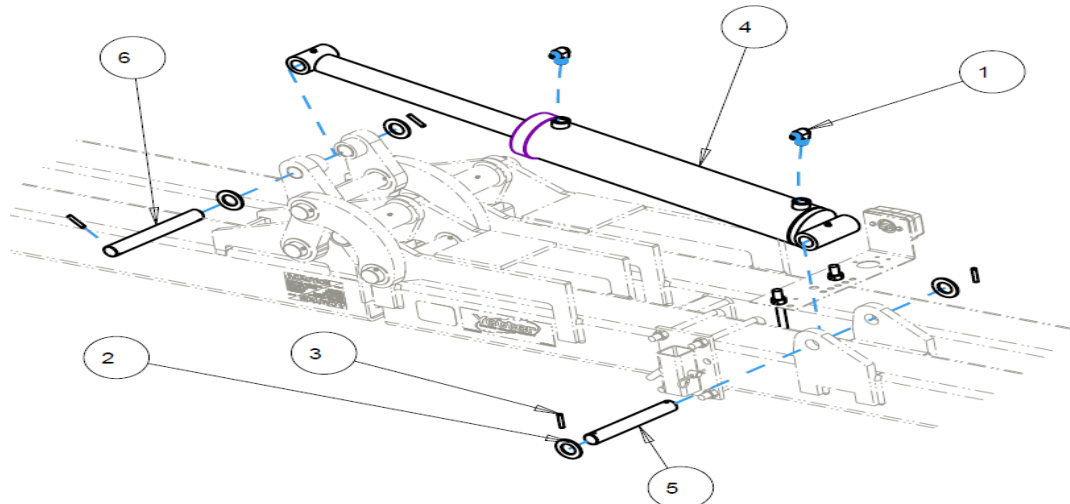
3800 SINGLE FRAME TOOLBAR

ITEM	PART NO.	DESCRIPTION	QTY
1	2515-172	CYLINDER CLEVIS PIN, ZP	4
2	2515-330	90 DEG., 3/4 SAE TO -6 JIC	4
3	2570-465	7 GA. HAIRPIN COTTER ZP	8
4	3841-338	4 X 24 CYLINDER	2



3800 DOUBLE FRAME TOOLBAR

ITEM	PART NO.	DESCRIPTION	QTY
1	2515-830	2501-06-12 90 DEG. FITTING (RESTRICTED)	4
2	2527-566	1.5" TYPE B NARROW WASHER	8
3	2530-212	3/8 X 2 ROLL PIN ZP	8
4	3841-300	5 X 24 HD WELDED HYDRAULIC CYLINDER	2
5	3841-301	CYLINDER PIN, BASE END	2
6	3841-302	CYLINDER PIN, ROD END	2

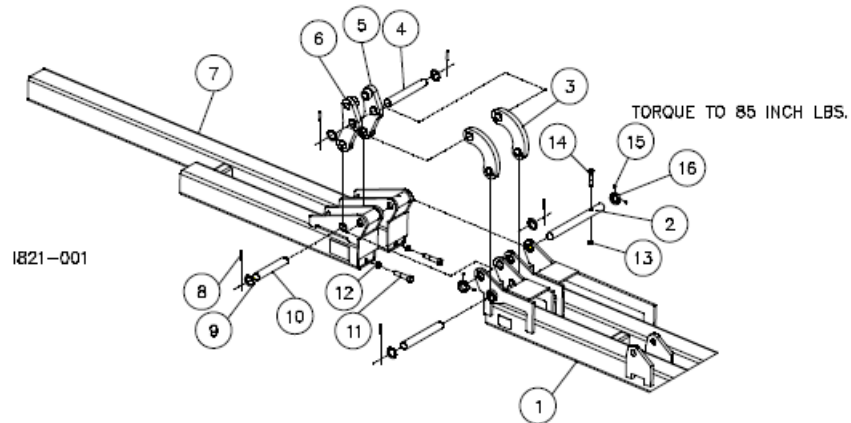


PARTS IDENTIFICATION

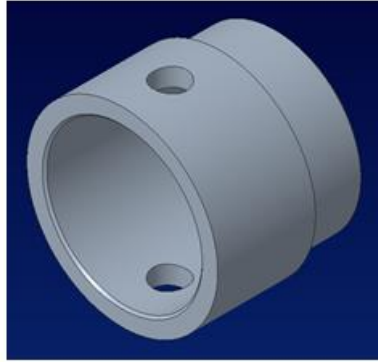
MANUFACTURED 07-2012 TO 12-2020

3800 HINGE ASSEMBLY

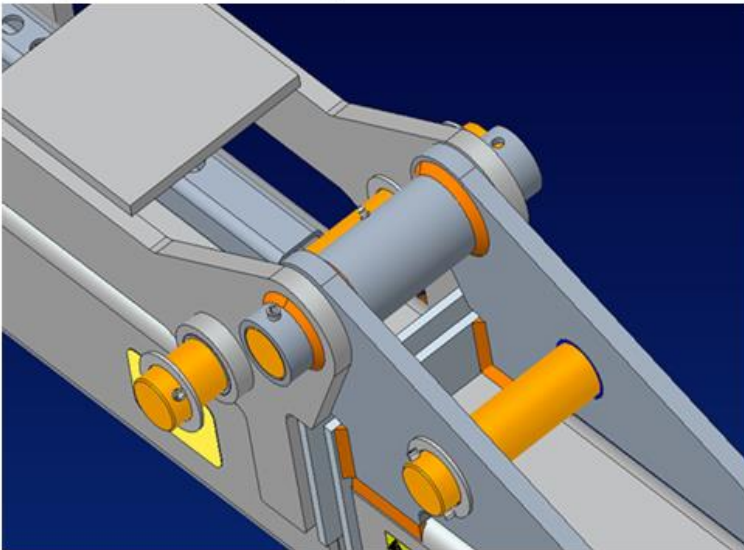
DET	QTY	PART NO.	DESCRIPTION
1	1	3831-207	31' CENTER SECTION
	4	3841-313	LNER, LINK BASE
	8	3841-324	LNER, HINGE PLATE
1	1	3841-216	41' CENTER SECTION
	4	3841-313	LNER, LINK BASE
	8	3841-324	LNER, HINGE PLATE
2	2	3841-303	HINGE PIN
3	2	3841-154	SHORT LINK ASSEMBLY
	1	3841-306	SHORT LINK
4	2	3841-313	LNER, LINK BASE
	4	3841-304	LNK PIN, LONG 14.813"
5	2	3841-205	CYLINDER LINK RIGHT HAND
	1	3841-313	LNER, LINK BASE
6	1	3841-316	LNER, ROD END
	2	3841-204	CYLINDER LINK LEFT HAND
7	2	3841-313	LNER, LINK BASE
	1	3841-316	LNER, LINK BASE
8	1	3831-201	L.H. WING
	2	3841-324	LNER, HINGE PLATE
	1	3831-202	R.H. WING (SHOWN)
	2	3841-324	LNER, HINGE PLATE
	1	3841-218	R.H. WING (SHOWN)
	2	3841-324	LNER, HINGE PLATE
	1	3841-217	L.H. WING
	2	3841-324	LNER, HINGE PLATE
	1	3841-316	LNER, ROD END
	8	12	2530-208
9	12	2527-567	2" WASHER
10	2	3841-305	LNK PIN, SHORT 11.625"
11	4	2502-604	7/8 9X31-1THD HD TPBLT G2Z
12	4	2520-543	7/8 -9 JAM HEX NUT ZP
13	2	2520-515	3/4-10 LOCK HEX NUT ZP
14	2	2502-404	3/4-10 X 4 HHCS GR. 5 ZP
15	2	3841-340	RETAINING COLLAR
16	4	2503-201	1/4-20 X 1/2 SET SCREW



3800-318 HINGE SLIP-FIT BUSHING

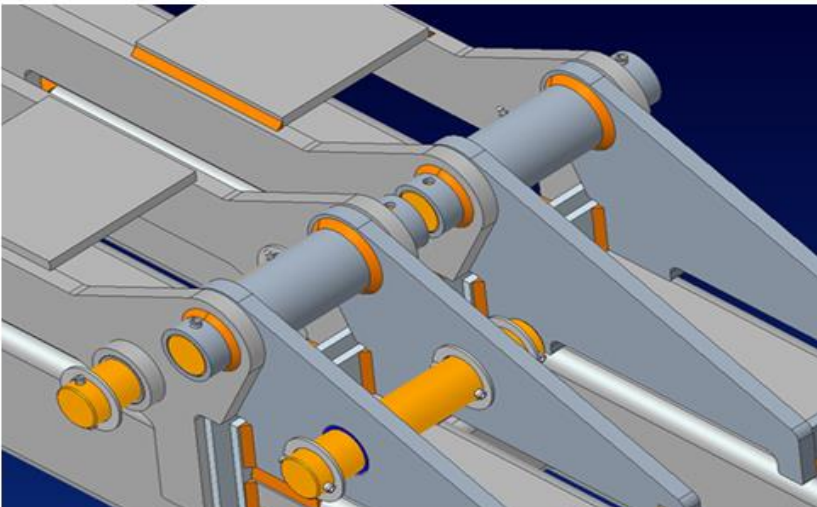


Single Frame Hinge



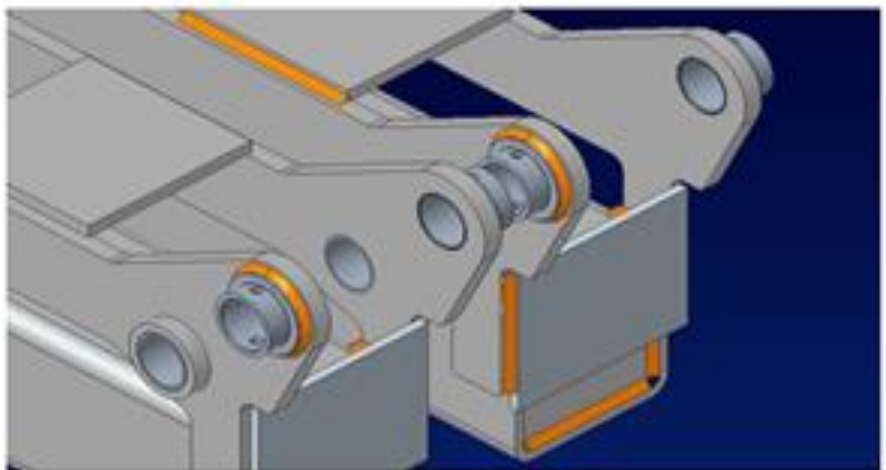
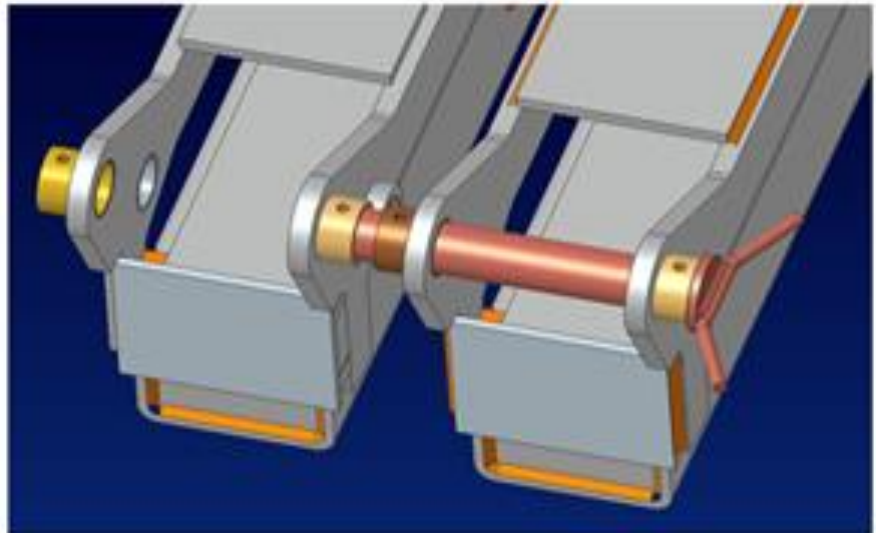
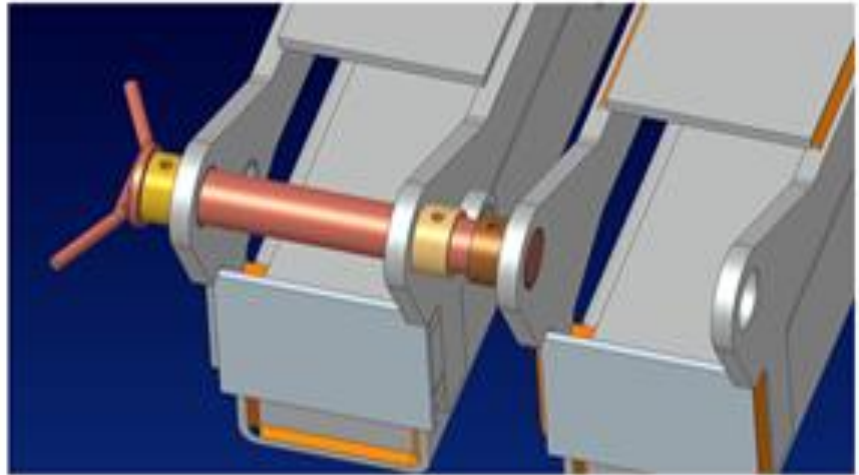
WELD THE (4) 3800-318 SLIP-FIT BUSHINGS TO THE MAIN FRAME TOOLBAR HINGE PLATES USING A 1/4" WELD ALL THE WAY AROUND

Double Frame Hinge



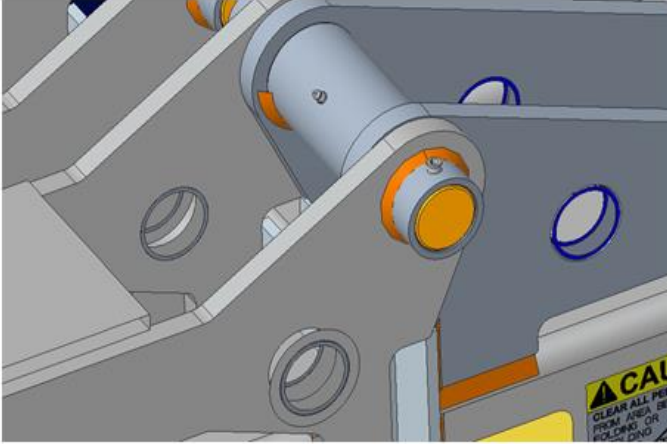
WELD THE (8) 3800-318 SLIP FIT BUSHINGS TO THE MAIN FRAME TOLLBAR HINGE PLATES USING A 1/4" WELD ALL THE WAY AROUND

**USE THE ORIGINAL
HINGE PIN TO
POSITION THE
3800-318 SLIP-FIT
BUSHINGS FOR
PROPER
ALIGNMENT
DURING THE
WELDING
PROCEDURE.**



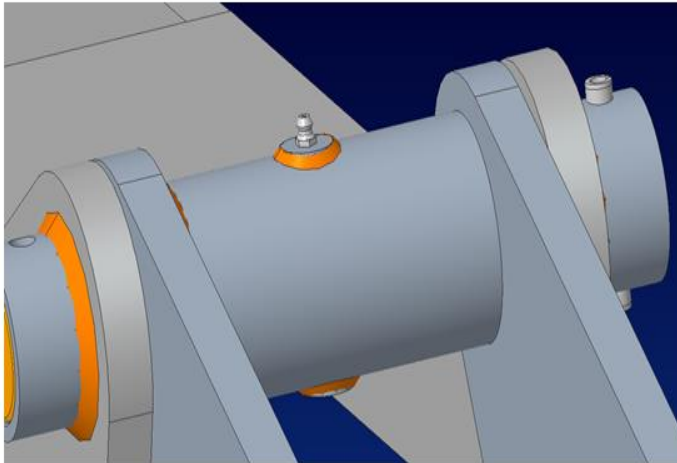
- Common Components

- Drill front wing hinge bushing at roughly 45° and insert 2533-110 zerk
- Double frame toolbars will need plugs welded in to bolt hole in rear wing hinge bushing
 - One will have hole drilled for another 2533-110 zerk



FRONT HINGE BUSHING

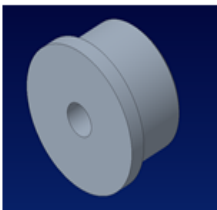
USING A 15/64" DRILL BIT, DRILL A HOLE AT ROUGHLY 45 DEGREES AND INSERT A 2533-110 GREASE ZERK



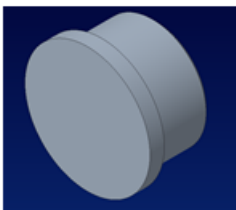
REAR HINGE BUSHING

TOP HOLE: WELD THE 3800-319 PLUG WITH HOLE USING .13" WELD ALL THE WAY AROUND. INSTALL THE 2533-110 GREASE ZERK

BOTTOM HOLE: WELD THE 3800-320 PLUG USING .13" WELD ALL THE WAY AROUND.

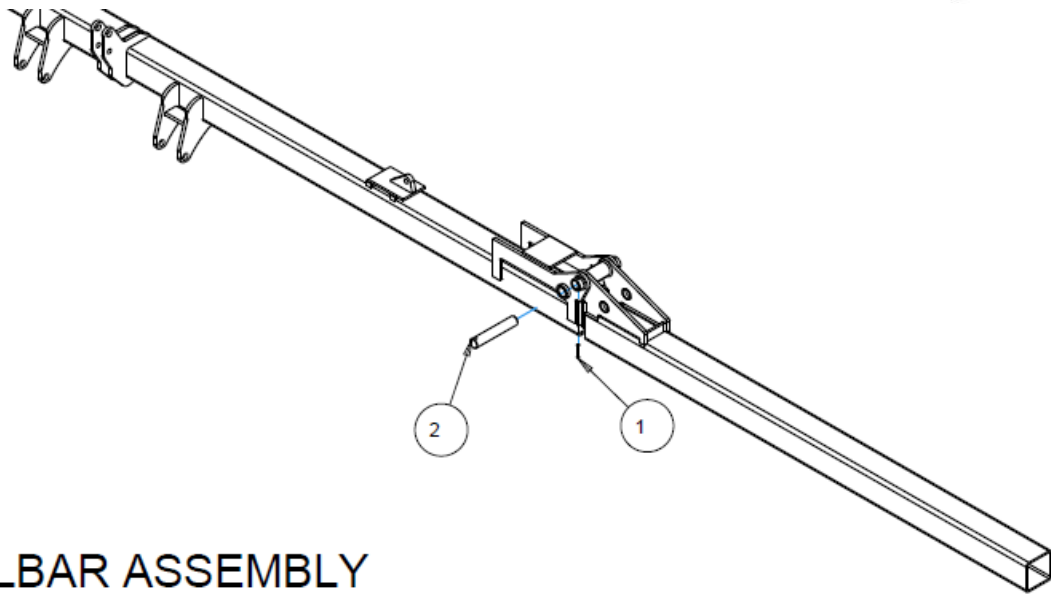
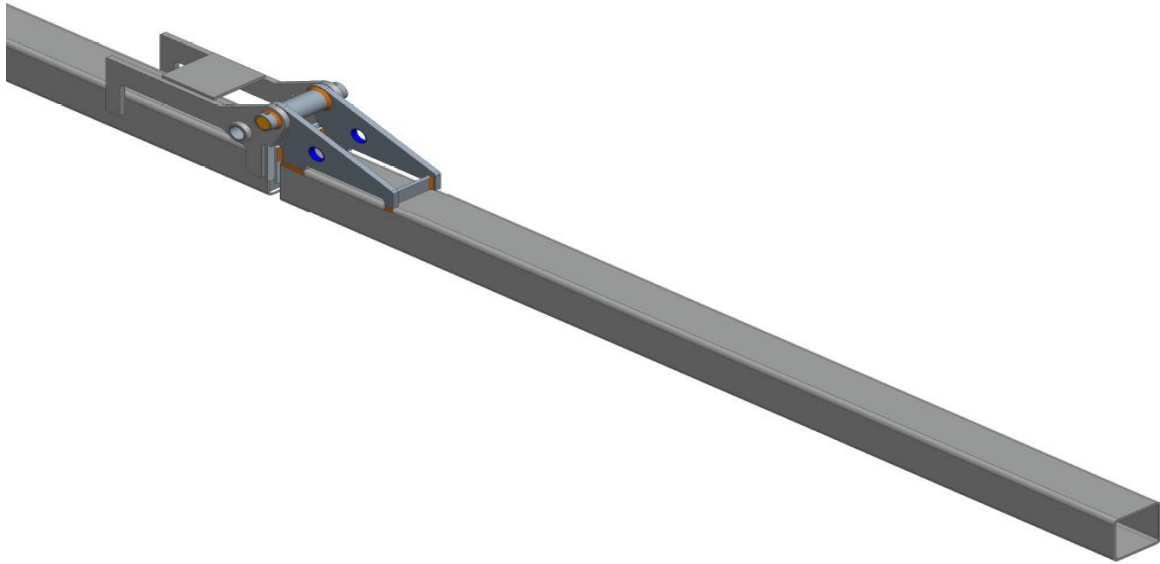


3800-319 PLUG WITH GREASE ZERK HOLE



3800-320 PLUG

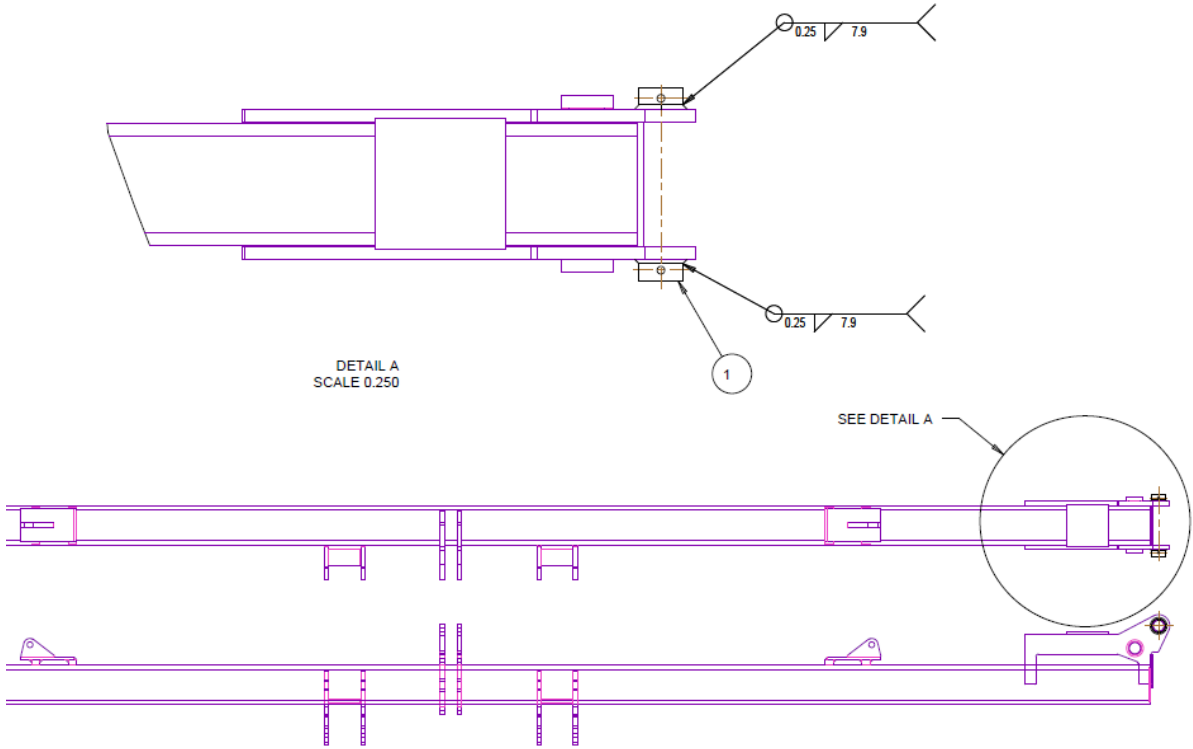
3800 SINGLE FRAME



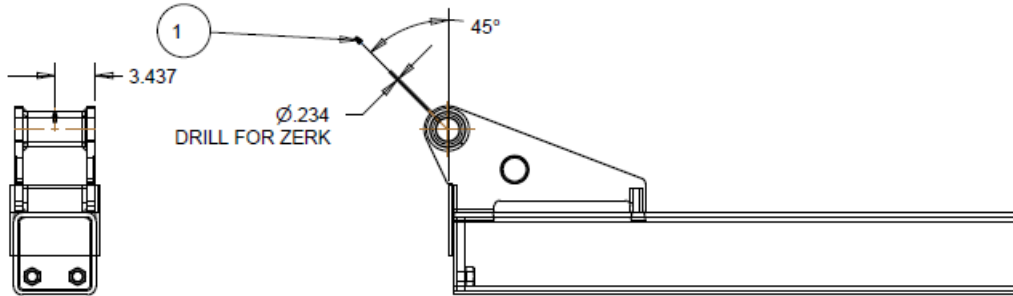
TOOLBAR ASSEMBLY

ITEM	PART NO.	DESCRIPTION	QTY
1	2530-221	7/16 X 3 ROLL PIN ZP	2
2	3841-330	LINK PIN, UPPER	2

3800 SINGLE FRAME



ITEM	PART NO.	DESCRIPTION	QTY
1	3800-318	HINGE SLIP-FIT BUSHING	4



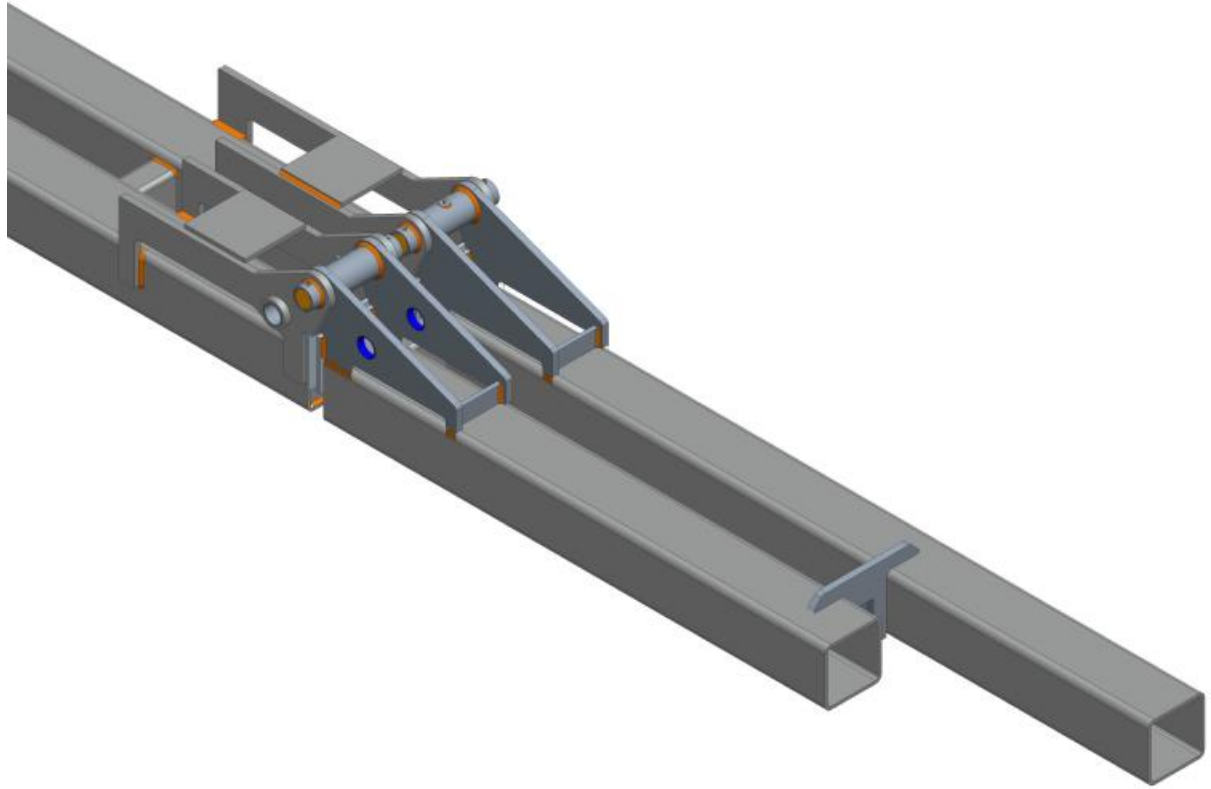
SCALE 0.125

GREASE ZERK PLACEMENT IN WING HINGE

ITEM	PART NO.	DESCRIPTION	QTY
1	2533-110	1/4-28 ZERK STRAIGHT SELF-TAP	1

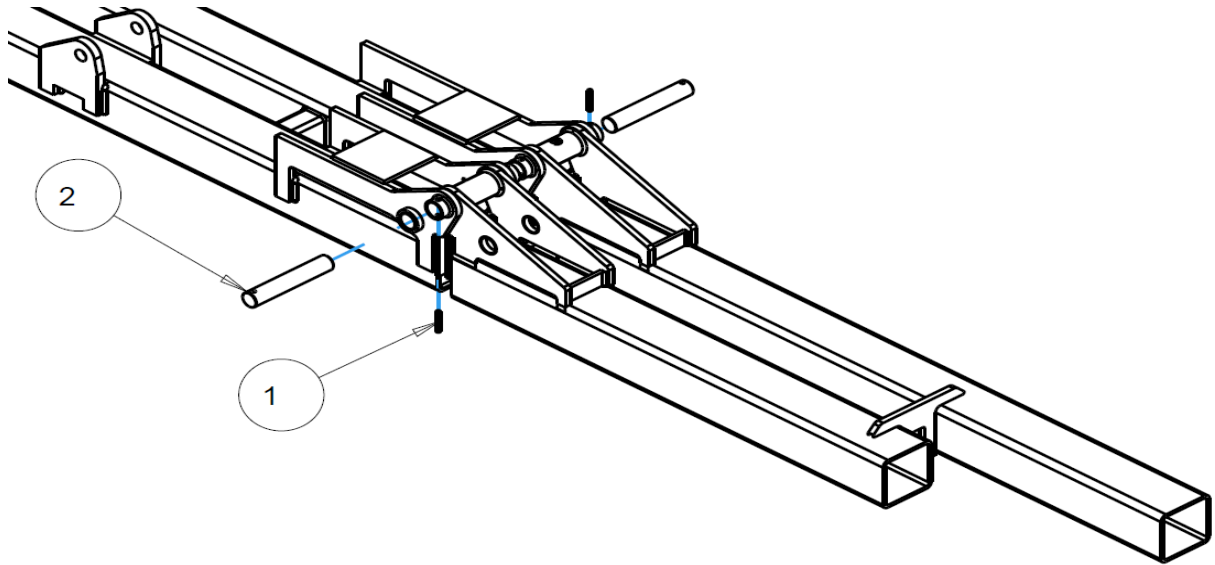
NOTES

3800 DOUBLE FRAME

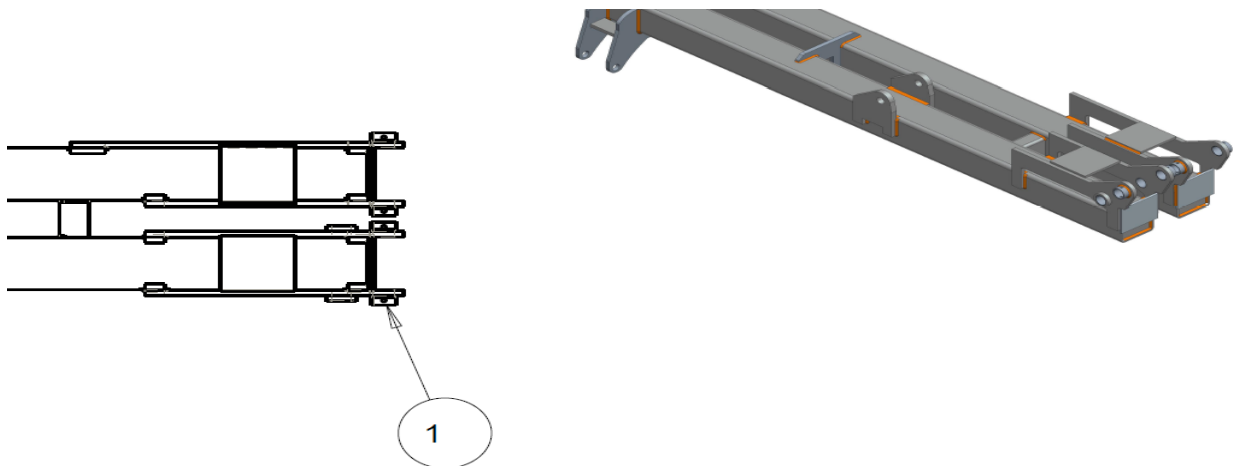


ITEM	PART NO.	DESCRIPTION	QTY
1	2530-221	7/16 X 3 ROLL PIN ZP	4
2	2533-110	1/4-28 ZERK STRAIGHT SELF-TAP	4
3	3800-207	HINGE BUSHING LOCATING FIXTURE, RH	1
4	3800-208	HINGE BUSHING LOCATING FIXTURE, LH	1
5	3800-209	ALIGNMENT PIN, W.A.	1
6	3800-318	HINGE SLIP-FIT BUSHING	8
7	3800-319	PLUG W/ ZERK HOLE	2
8	3800-320	PLUG	2
9	3841-330	LINK PIN, UPPER	4

3800 DOUBLE FRAME



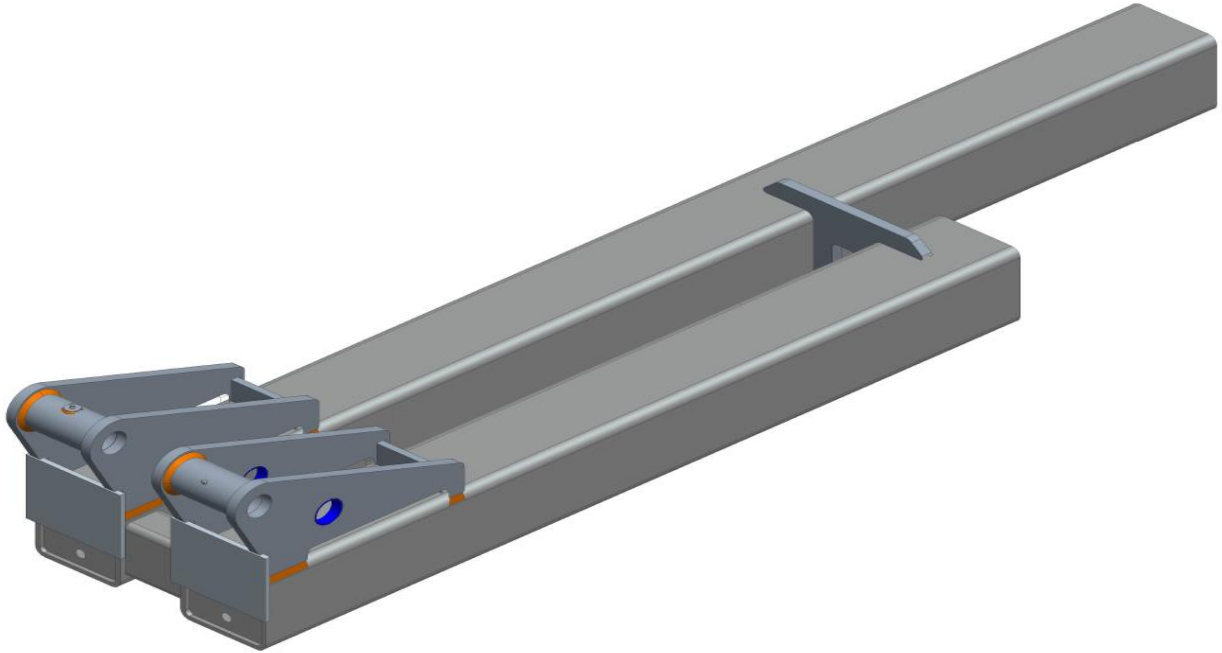
ITEM	PART NO.	DESCRIPTION	QTY
1	2530-221	7/16 X 3 ROLL PIN ZP	4
2	3841-330	LINK PIN, UPPER	4



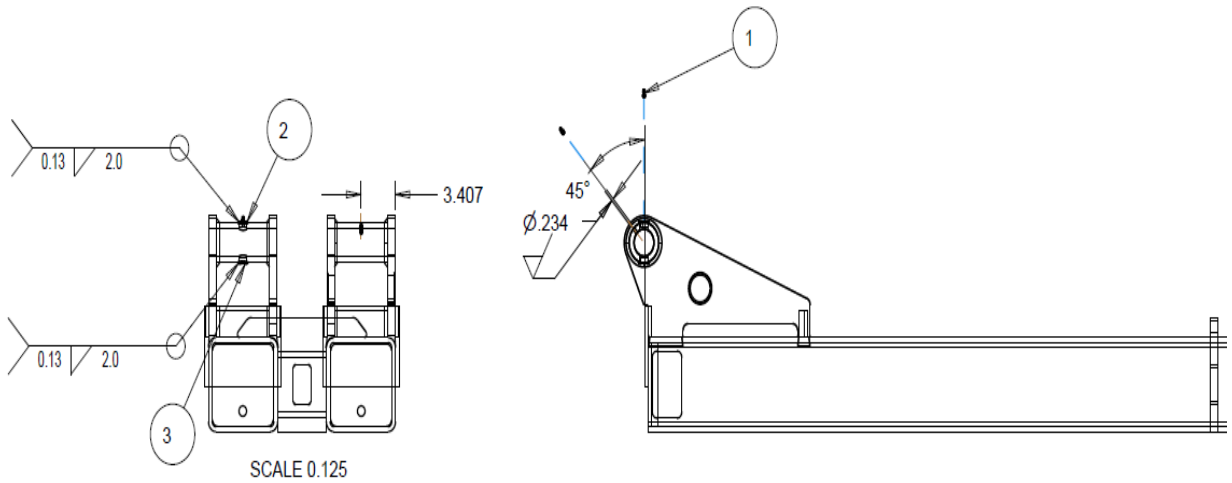
ITEM	PART NO.	DESCRIPTION	QTY
1	3800-318	HINGE SLIP-FIT BUSHING	8

3800 DOUBLE FRAME

LEFT HAND

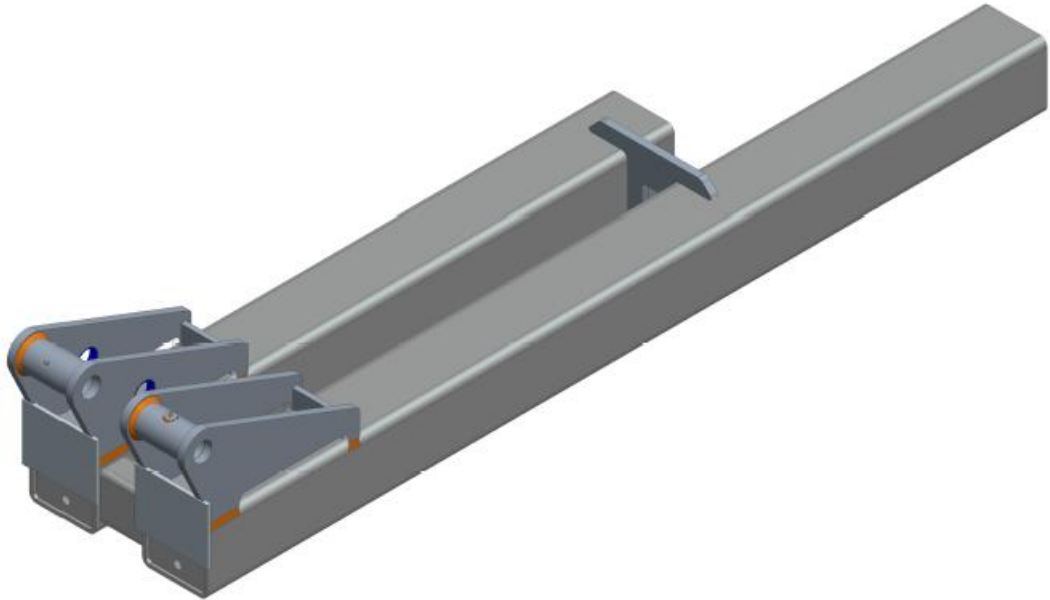


ITEM	PART NO.	DESCRIPTION	QTY
1	2533-110	1/4-28 ZERK STRAIGHT SELF-TAP	2
2	3800-319	PLUG W/ ZERK HOLE	1
3	3800-320	PLUG	1

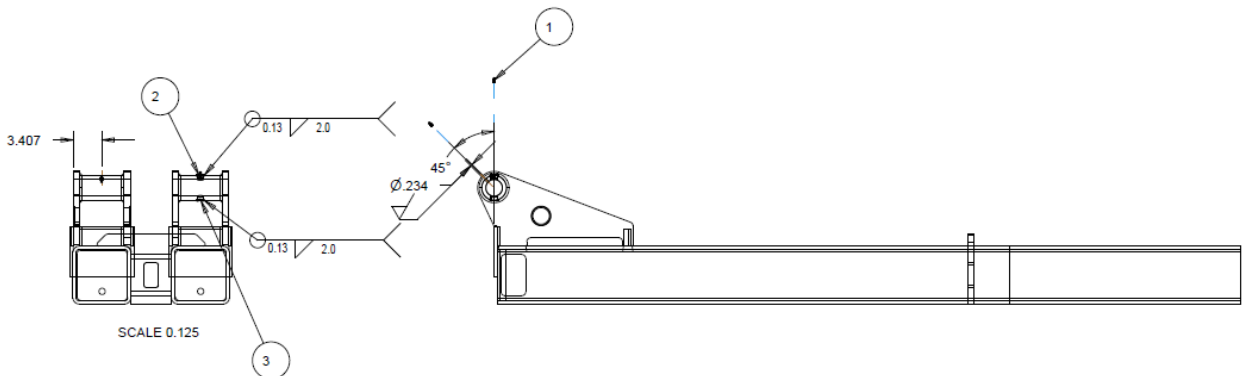


3800 DOUBLE FRAME

RIGHT HAND



ITEM	PART NO.	DESCRIPTION	QTY
1	2533-110	1/4-28 ZERK STRAIGHT SELF-TAP	2
2	3800-319	PLUG W/ ZERK HOLE	1
3	3800-320	PLUG	1





A Tradition of Solutions since 1930

Yetter Farm Equipment Co

PO BOX 358 109 S. McDonough

Colchester, IL 62326-0358

Phone: 309-776-4111

Toll Free: 800-447-5777

Email: info@yetterco.com

For updated models and manuals visit the Yetter website:

www.yetterco.com

© Yetter Farm Equipment Co. All Rights Reserved

2565-986 • 02/21