

Yetter

FARM EQUIPMENT

2965 SERIES RESWEEP

OPERATOR'S MANUAL
PARTS IDENTIFICATION

2565-985 06/2021

2965-028, 2965-028-LA, 2965-040, 2965-052, 2965-053, 2965-057



YETTER MANUFACTURING CO.

Founded 1930

Colchester, IL 62326

Toll free: (800)447-5777.

Fax: (309)776-3222

Website: yetterco.com

E-mail: info@yetterco.com

YETTER

TABLE OF CONTENTS

BOLT TORQUE.....2
FOREWORD..... 3
SAFETY..... 4
INSTALLATION.....5-8
OPERATION.....9
PARTS IDENTIFICATION.....10-14

BOLT TORQUE



Important: Over-tightening hardware can cause just as much damage as under-tightening. Tightening hardware beyond the recommended range can reduce its shock load capacity.

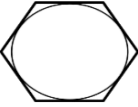


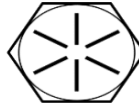
All hardware is either Grade 5 unless otherwise noted. Grade 5 cap screws are marked with three radial lines on the head. Grade 8 cap screws are marked with six radial lines on the head.

If hardware must be replaced, be sure to replace it with hardware of equal size, strength and thread type. Refer to the torque values chart when tightening hardware.

The chart below is a guide for proper torque. Use it unless a specified torque is called out elsewhere in the manual. Torque is the force applied to the end of the handle or cheater bar, times the length of the handle or bar. Tightening hardware beyond the recommended range can reduce its shock load capacity.

Use a torque wrench wherever possible

The following table shows torque in ft.-lbs. for coarse thread hardware.

Bolt Diameter and Threads per Inch	 Grade 2	 Grade 5	 A-325	 Grade 8
1/4	6		10	14
5/16	12		20	30
3/8 – 16	25		35	50
7/16 – 14	35		55	80
1/2 – 13	55		85	125
9/16 – 12	75		125	175
5/8 – 11	105		170	235
3/4-10	185		305	425
7/8 – 9	170		445	690
1-8	260		670	1030
1 1/8 – 7	365		900	1460
1 1/4 - 7	515		1275	2060
1 3/8 – 6	675		1675	2700
1 1/2 - 6	900		2150	3500
1 3/4 – 5	1410		3500	5600

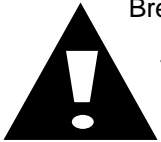
FOREWORD

You've just joined an exclusive but rapidly growing club.

For our part, we want to welcome you to the group and thank you for buying a Yetter product.

We hope your new Yetter products will help you achieve both goals-increase your productivity and increase your efficiency so that you may generate more profit.

This operator's manual has been designed into four major sections: Foreword, Safety Precautions, Installation Instructions and Parts Breakdown.



This **SAFETY ALERT SYMBOL** indicates important safety messages in the manual. When you see this symbol, be alert to the possibility of **PERSONAL INJURY** and carefully read the message that follows.

The word **NOTE** is used to convey information that is out of context with the manual text. It contains special information such as specifications, techniques and reference information of a supplementary nature.

The word **IMPORTANT** is used in the text when immediate damage will occur to the machine due to improper technique or operation.

Important will apply to the same information as specified by note only of an immediate and urgent nature.

It is the responsibility of the user to read the operator's manual and comply with the safe and correct operating procedure and to lubricate and maintain the product according to the maintenance schedule in the operator's manual.

The user is responsible for inspecting his machine and for having parts repaired or replaced when continued use of the product would cause damage or excessive wear to the other parts.

It is the user's responsibility to deliver his machine to the Yetter dealer who sold him the product for service or replacement of defective parts, which are covered by the warranty policy.

If you are unable to understand or follow the instructions provided in this publication, consult your local Yetter dealer or contact:

YETTER MANUFACTURING CO.

309/776-4111

800/447-5777

309/776-3222 (FAX)

Website: www.yetterco.com

E-mail: info@yetterco.com

WARRANTY

Yetter Manufacturing warrants all products manufactured and sold by it against defects in material. This warranty being expressly limited to replacement at the factory of such parts or products as shall appear to be defective after inspection. This warranty does not obligate the Company to bear cost of labor in replacement of parts. It is the policy of the Company to make improvements without incurring obligations to add them to any unit already sold. No warranty is made or authorized to be made, other than herein set forth. This warranty is in effect for one year after purchase.

DEALER: _____

Yetter Manufacturing warrants its own products only and cannot be responsible for damages to equipment on which mounted.

BE ALERT!

YOUR SAFETY IS INVOLVED



WATCH FOR THIS SYMBOL. IT POINTS OUT IMPORTANT SAFETY PRECAUTIONS. IT MEANS “ATTENTION – BE ALERT!”

It is your responsibility as an owner, operator, or supervision to know and instruct everyone using this machine at the time of initial assignment and at least annually thereafter, of the proper operation, precautions, and work hazards which exist in the operation of the machine in accordance with OSHA regulations.

Safety Is No Accident



The following safety instructions, combined with common sense, will save your equipment from needless damage and the operator from unnecessary exposure to personal hazard. Pay special attention to the caution notes in the text. Review this manual at least once a year with all operators.

1. Read and understand the operator's manual before operating this machine. Failure to do so is considered a misuse of the equipment.
2. Make sure equipment is secure before operating.
3. Always keep children away from equipment when operating.
4. Make sure everyone that is not directly involved with the operation is out of the work area before beginning operation.
5. Make sure all safety devices, shields, and guards are in place and functional before beginning operation
6. Shut off all power to adjust, service, or clean.
7. Keep hands, feet, and clothing away from moving parts. It is a good idea to remove all jewelry before operating.
8. Inspect the machine periodically during operation for signs of excessive wear, loose fasteners, and unusual noises.

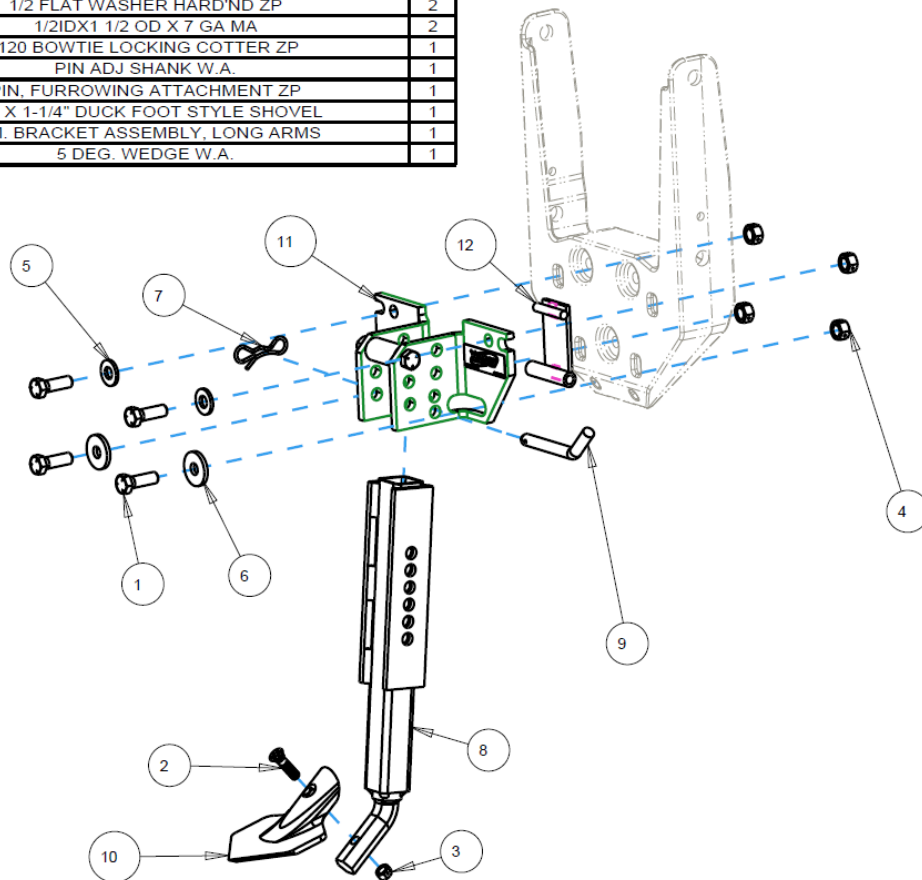
INSTALLATION INSTRUCTIONS

2965-028, 2965-028-LA Pin Adjust Kits

STEP 1: Take any existing faceplate mounted row cleaners or coulters off of the row unit.

STEP 2: Install the mount bracket assembly to the faceplate using the provided ½"x1-1/2" bolts. Do not tighten bolts yet. For the 2965-028-LA, for 21" long parallel arms, install the 2967-299 wedge plate so the bottom bushing is captured by the bottom slot in the mount assembly (see picture below).

ITEM	PART NO.	DESCRIPTION	QTY
1	2502-294	1/2-13 X 1-1/2 HHCS GR5 ZP	4
2	2506-310	3/8-16 X 1-1/2 #3 REG. HEAD PLOW BLT GR. 8 ZP.	1
3	2520-255	3/8-16 LOCK HEX NUT, GR A, ZP	1
4	2520-357	1/2-13 LOCK HEX NUT, GR A, ZP	4
5	2526-355	1/2 FLAT WASHER HARD'ND ZP	2
6	2527-330	1/2IDX1 1/2 OD X 7 GA MA	2
7	2570-448	.120 BOWTIE LOCKING COTTER ZP	1
8	2965-211	PIN ADJ SHANK W.A.	1
9	2965-305	PIN, FURROWING ATTACHMENT ZP	1
10	2965-410	1/4" X 1-1/4" DUCK FOOT STYLE SHOVEL	1
11	2967-195-LA	R.M. BRACKET ASSEMBLY, LONG ARMS	1
12	2967-299	5 DEG. WEDGE W.A.	1



STEP 2 Continued: For the 2965-028, install the mount bracket assembly (2967-195). At this time tighten the mounting hardware.

STEP 3: Install the pin adjust shank. –For the 2965-028, the shank goes in front of the two ½" bolts and bushings. –For the 2965-028-LA, the shank goes behind the ½" bolt and in front of the “wedge” plate.

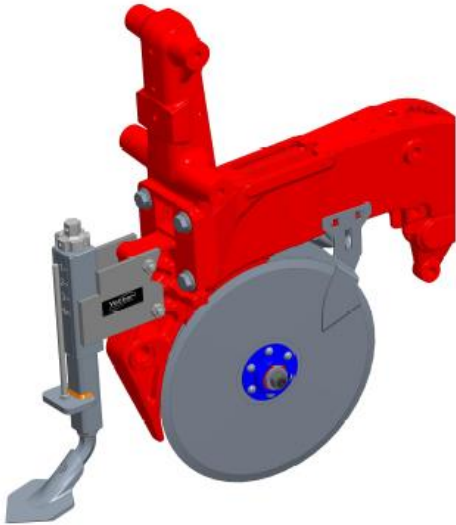
STEP 4: Install the duck foot shovel using the 3/8" plow bolt and lock nut. Use the pin to adjust depth up or down to achieve desired working depth.

INSTALLATION INSTRUCTIONS

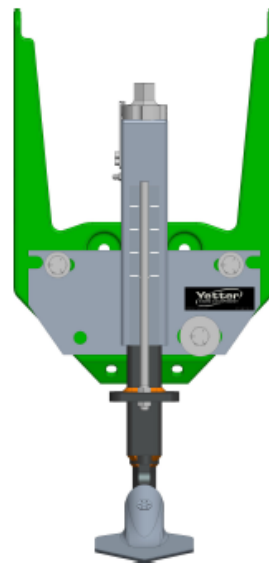
2965-052, 2965-053, 2965-057 Screw Adjust Kits

STEP 1: Take any existing faceplate mounted coulters or row cleaner off the row unit

STEP 2: For Case row unit (2965-053), attach to the row unit using the provided ½” bolt and lock nuts. This may require taking off one or both of the gauge wheel arms.



STEP 2 Continued: For all other row units attach using three ½” bolts and locknuts. NOTE: put two bolts in the top mounting holes, and the smaller flat washer (2526-355) under the head of the bolt. Put a single bolt in one of the bottom holes with the larger flat washer (2526-402) under the head of the bolt. NOTE: the side with which the bottom bolt is installed will vary depending on planter model.



STEP 3: Install the duck foot shovel using the 3/8” plow bolt and lock nut. Use the knob to adjust the depth up or down to achieve desired working depth.

INSTALLATION INSTRUCTIONS

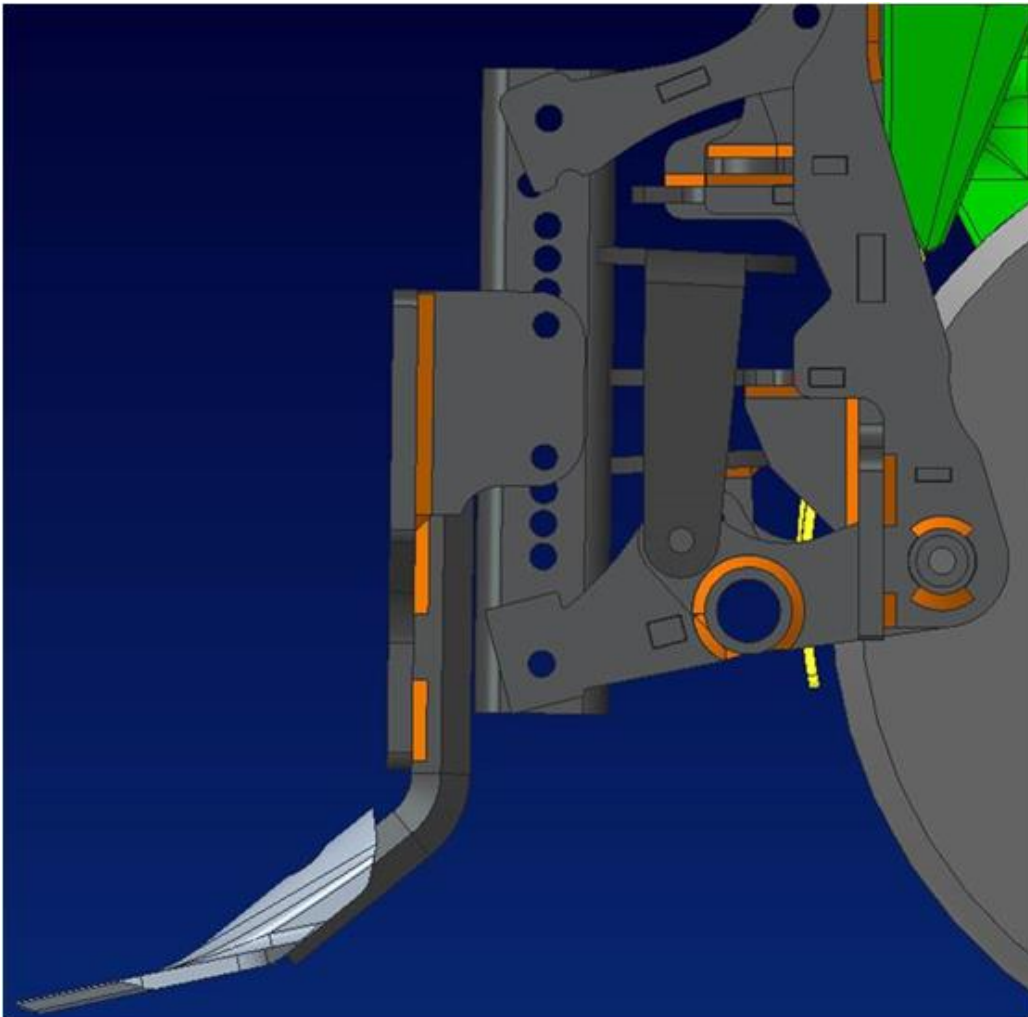
Air Adjust Kit 2965-040

STEP 1: Take the snake head off the residue manager stem by removing the two 3/8" bolts and lock nuts. This is easier if the residue manager wheels are taken off first.

STEP 2: Using the provided 3/8" bolts and lock nuts attach the Resweep shank to the square stem of the residue manager. A good starting point is to have 3 holes exposed above the shank, and 3 holes exposed below the shank, on the square stem.

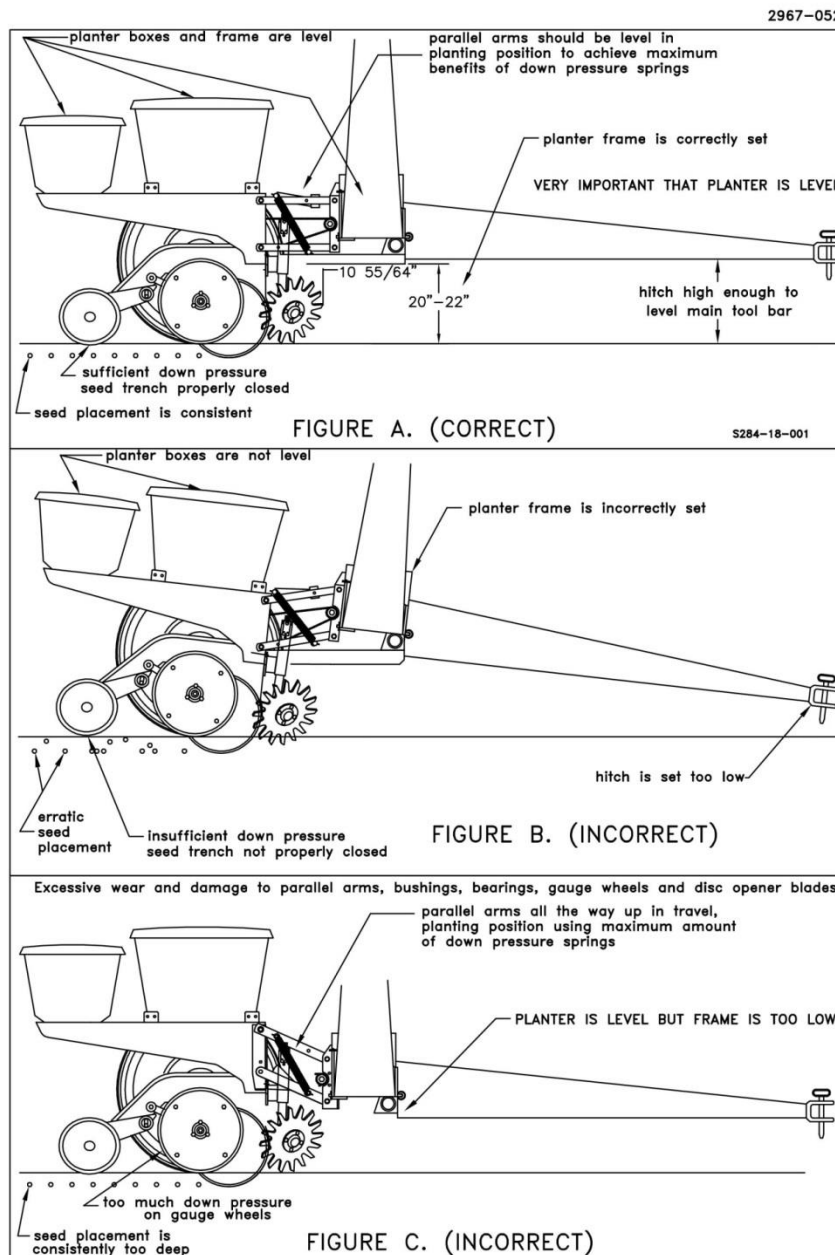
STEP 3: Install the duck foot shovel using the 3/8" plow bolt and lock nut. Depth adjustment can be made in 1/2" increments by removing the 3/8" hex head bolts and lock nuts, and moving the shank up or down.

STEP 4: Set the RU circuit (up pressure circuit) to 10 psi. This keeps some pressure in the air bag to prevent it from getting pinched. Set the RD and WT circuit to 50 psi. This will lock the unit down and maintain a consistent depth. DO NOT try to adjust the depth with the air pressure circuits.



OPERATION

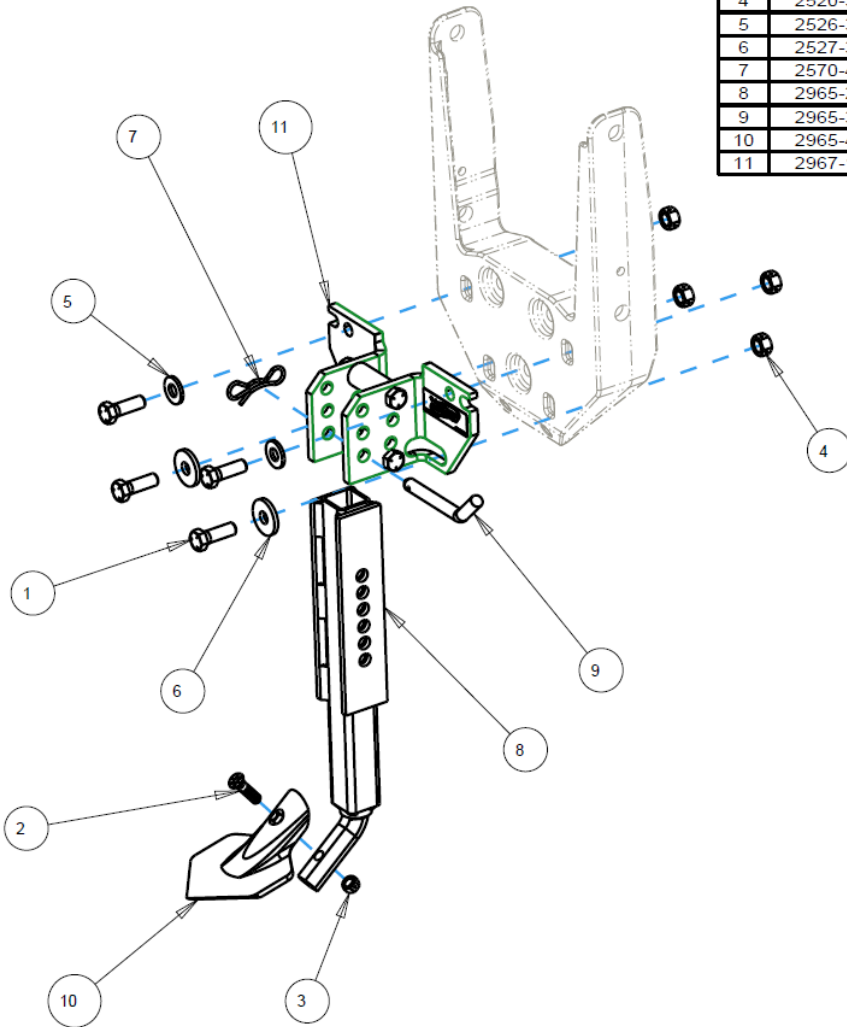
A good starting point for depth is $\frac{3}{4}$ ". Scouting behind the planter is critical for proper performance. If the unit is run to shallow it will not sufficiently take out the old crop stand. If it is run to deep it can leave a furrow over the seed zone. A widely set drag chain is recommended to help drag some dirt back to the center of the row, as the shovel will naturally throw dirt out.



PART IDENTIFICATION

2965-028

ITEM	PART NO.	DESCRIPTION	QTY
1	2502-294	1/2-13 X 1-1/2 HHCS GR5 ZP	4
2	2506-310	3/8-16 X 1-1/2 #3 REG. HEAD PLOW BLT GR. 8 ZP.	1
3	2520-255	3/8-16 LOCK HEX NUT, GR A, ZP	1
4	2520-357	1/2-13 LOCK HEX NUT, GR A, ZP	4
5	2526-355	1/2 FLAT WASHER HARD'ND ZP	2
6	2527-330	1/2IDX1 1/2 OD X 7 GA MA	2
7	2570-448	.120 BOWTIE LOCKING COTTER ZP	1
8	2965-210	PIN ADJ SHANK W.A.	1
9	2965-305	PIN, FURROWING ATTACHMENT ZP	1
10	2965-410	1/4" X 1-1/4" DUCK FOOT STYLE SHOVEL	1
11	2967-195	R.M. BRACKET ASSEMBLY	1

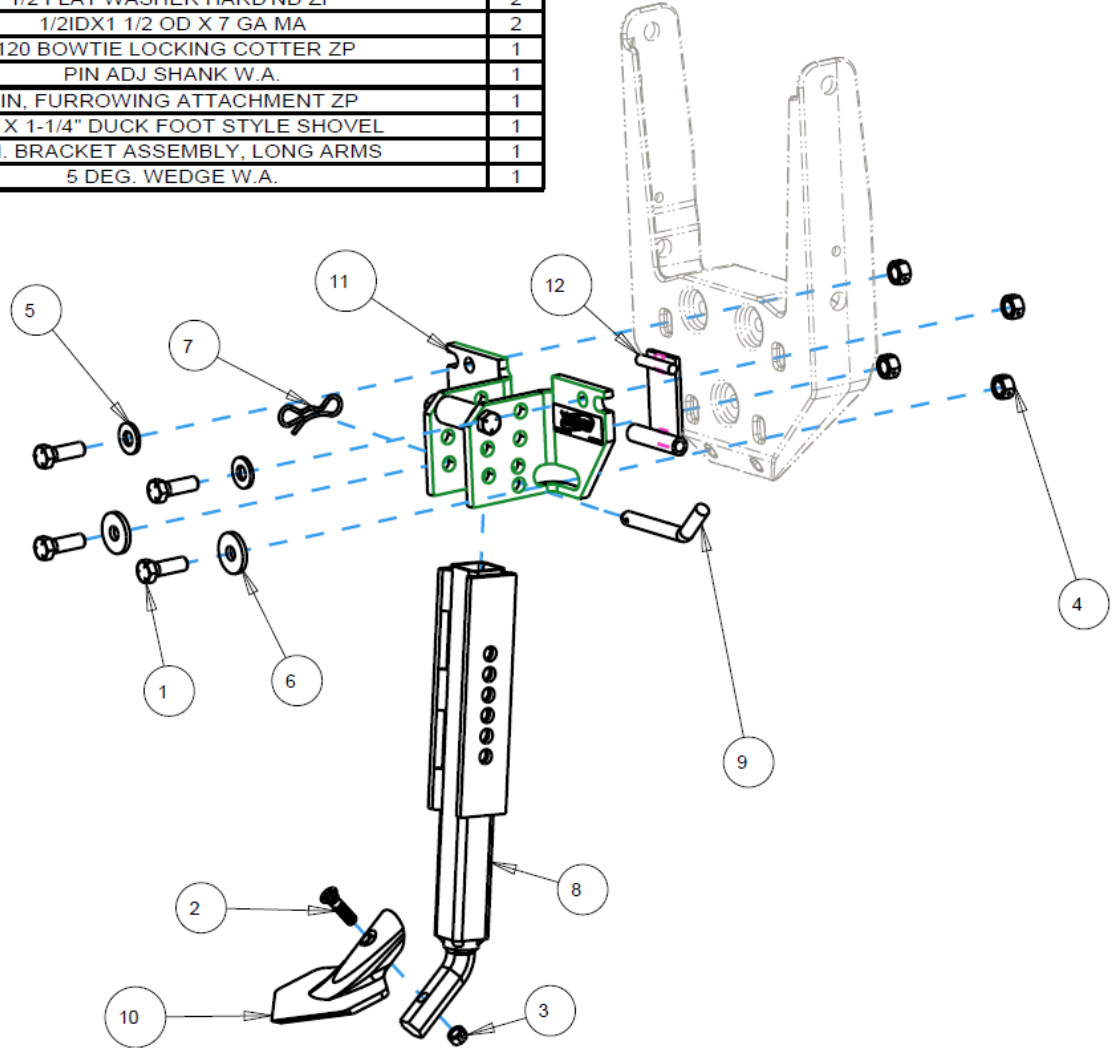


ISO2965-028

PART IDENTIFICATION

2965-028-LA

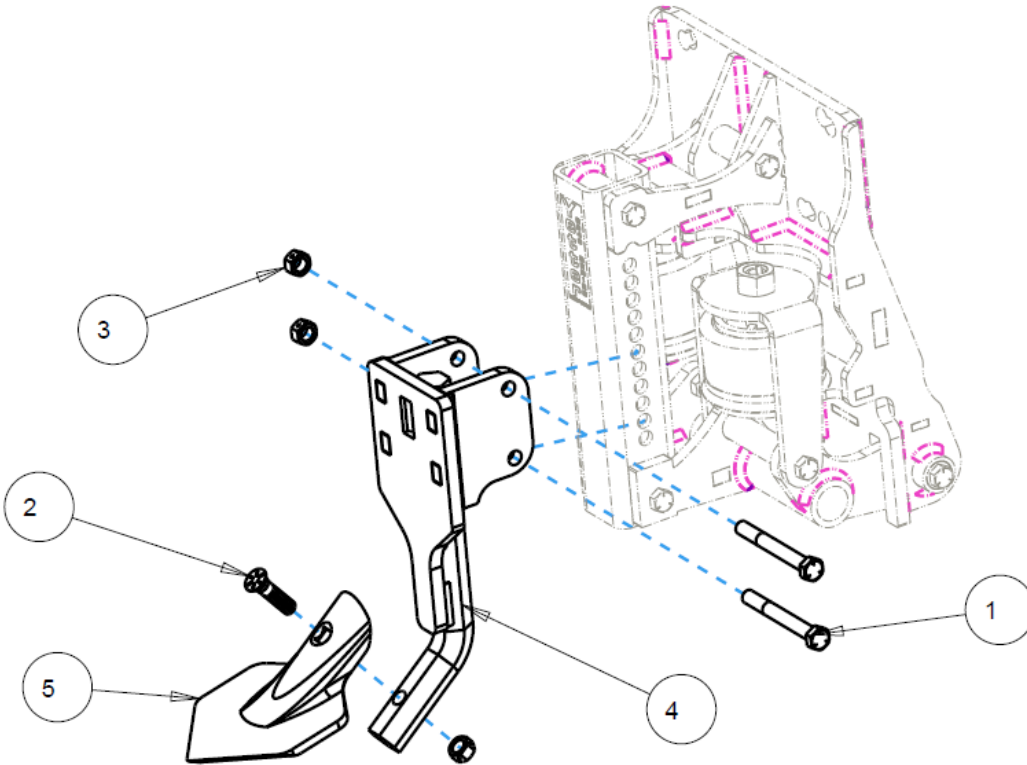
ITEM	PART NO.	DESCRIPTION	QTY
1	2502-294	1/2-13 X 1-1/2 HHCS GR5 ZP	4
2	2506-310	3/8-16 X 1-1/2 #3 REG. HEAD PLOW BLT GR. 8 ZP.	1
3	2520-255	3/8-16 LOCK HEX NUT, GR A, ZP	1
4	2520-357	1/2-13 LOCK HEX NUT, GR A, ZP	4
5	2526-355	1/2 FLAT WASHER HARD'ND ZP	2
6	2527-330	1/2IDX1 1/2 OD X 7 GA MA	2
7	2570-448	.120 BOWTIE LOCKING COTTER ZP	1
8	2965-211	PIN ADJ SHANK W.A.	1
9	2965-305	PIN, FURROWING ATTACHMENT ZP	1
10	2965-410	1/4" X 1-1/4" DUCK FOOT STYLE SHOVEL	1
11	2967-195-LA	R.M. BRACKET ASSEMBLY, LONG ARMS	1
12	2967-299	5 DEG. WEDGE W.A.	1



PART IDENTIFICATION

2965-040

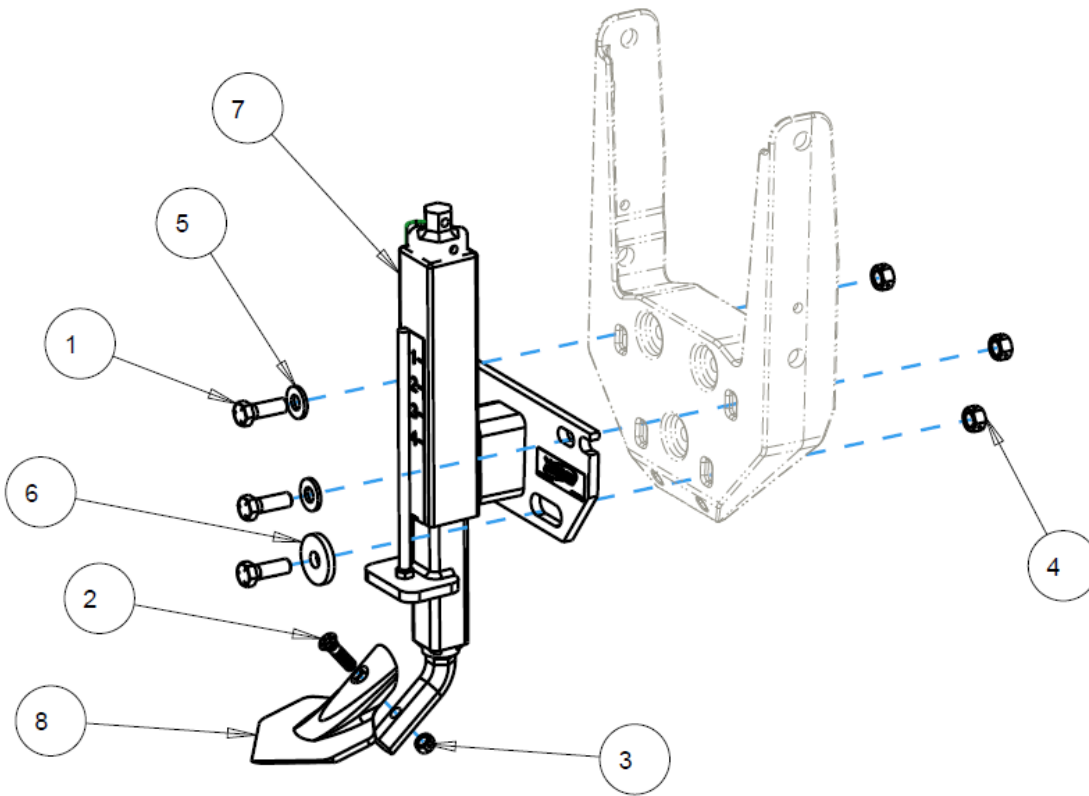
ITEM	PART NO.	DESCRIPTION	QTY
1	2502-233	3/8-16 X 3 1/4 HHCS GR 5 ZP	2
2	2506-310	3/8-16 X 1-1/2 #3 REG. HEAD FLOW BLT GR. 8 ZP.	1
3	2520-255	3/8-16 LOCK HEX NUT, GR A, ZP	3
4	2965-215	AIR ADJUST SHANK W.A.	1
5	2965-410	1/4" X 1-1/4" DUCK FOOT STYLE SHOVEL	1



PART IDENTIFICATION

2965 -052

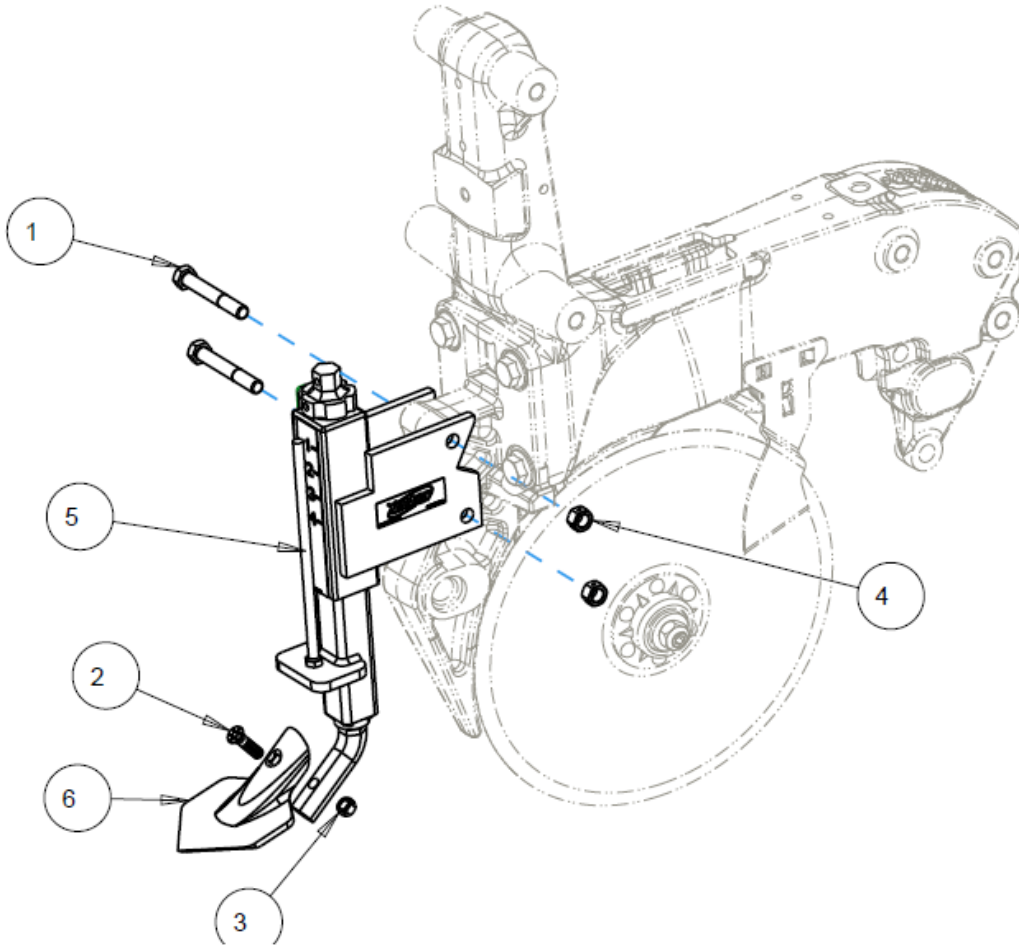
ITEM	PART NO.	DESCRIPTION	QTY
1	2502-294	1/2-13 X 1-1/2 HHCS GR5 ZP	3
2	2506-310	3/8-16 X 1-1/2 #3 REG. HEAD PLOW BLT GR. 8 ZP.	1
3	2520-255	3/8-16 LOCK HEX NUT, GR A, ZP	1
4	2520-357	1/2-13 LOCK HEX NUT, GR A, ZP	3
5	2526-355	1/2 FLAT WASHER HARD'ND ZP	2
6	2526-402	9/16ID X 1-3/4 OD X 1/4MBZP	1
7	2965-111	SCREW ADJUST SUB ASSEMBLY, RESWEEP	1
8	2965-410	1/4" X 1-1/4" DUCK FOOT STYLE SHOVEL	1



PART IDENTIFICATION

2965-053

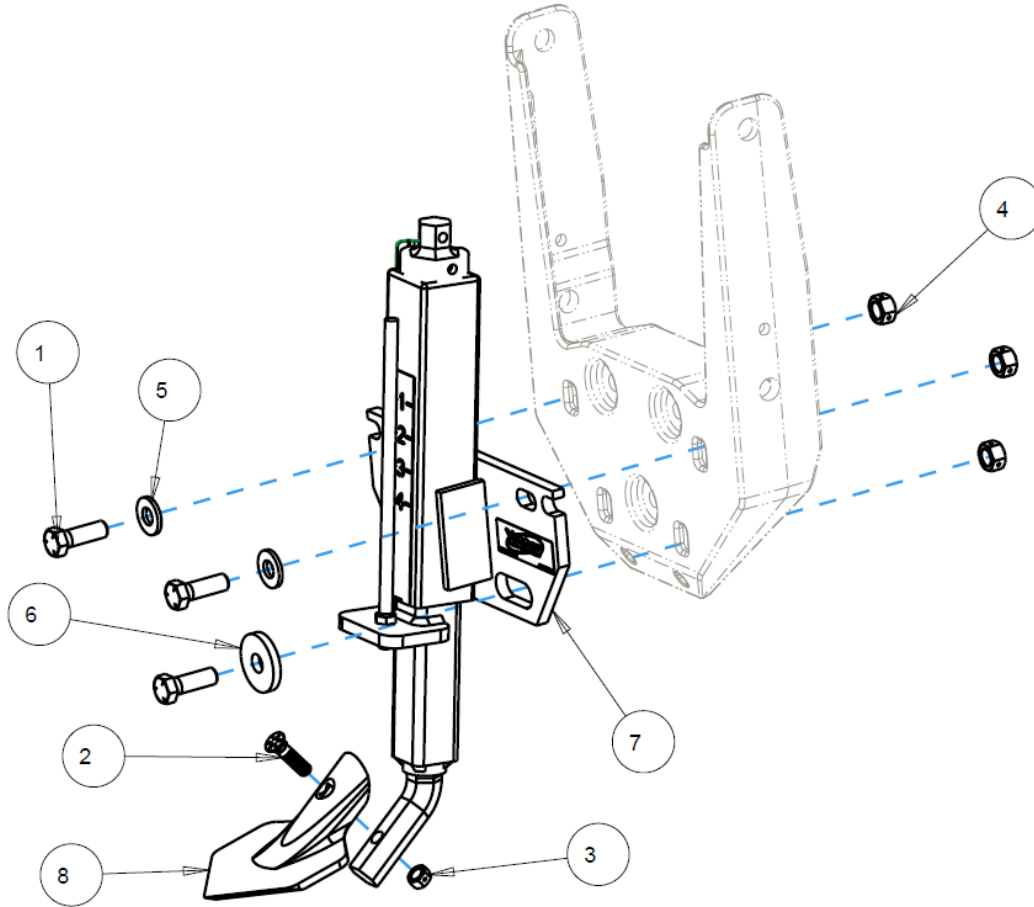
ITEM	PART NO.	DESCRIPTION	QTY
1	2502-316	1/2-13 X 3-1/2 HHCS GR5 ZP	2
2	2506-310	3/8-16 X 1-1/2 #3 REG. HEAD PLOW BLT GR. 8 ZP.	1
3	2520-255	3/8-16 LOCK HEX NUT, GR A, ZP	1
4	2520-357	1/2-13 LOCK HEX NUT, GR A, ZP	2
5	2965-114	SCREW ADJUST SUB ASSEMBLY, CNH, RESWEEP	1
6	2965-410	1/4" X 1-1/4" DUCK FOOT STYLE SHOVEL	1



PART IDENTIFICATION

2965-057

ITEM	PART NO.	DESCRIPTION	QTY
1	2502-294	1/2-13 X 1-1/2 HHCS GR5 ZP	3
2	2506-310	3/8-16 X 1-1/2 #3 REG. HEAD PLOW BLT GR. 8 ZP.	1
3	2520-255	3/8-16 LOCK HEX NUT, GR A, ZP	1
4	2520-357	1/2-13 LOCK HEX NUT, GR A, ZP	3
5	2526-355	1/2 FLAT WASHER HARD'ND ZP	2
6	2526-402	9/16ID X 1-3/4 OD X 1/4MBZP	1
7	2965-113	SCREW ADJUST SUB ASSEMBLY, LONG ARMS, RESWEEP	1
8	2965-410	1/4" X 1-1/4" DUCK FOOT STYLE SHOVEL	1



NOTES:



A Tradition of Solutions since 1930

Yetter Farm Equipment Co

PO BOX 358 109 S. McDonough

Colchester, IL 62326-0358

Phone: 309-776-4111

Toll Free: 800-447-5777

Email: info@yetterco.com

For updated models and manuals visit the Yetter website:

www.yetterco.com

© Yetter Farm Equipment Co. All Rights Reserved

2565-985 – 06/2021