



6200-050/6200-051 INTERCHANGER

FOR V-CLOSING WHEELS
OPERATOR'S MANUAL
PART IDENTIFICATION

2565-782 - 04/2014



YETTER MANUFACTURING CO.
FOUNDED 1930

Colchester, IL 62326-0358
Toll free: 800/447-5777
309/776-3222 (Fax)
Website: www.yetterco.com
E-mail: info@yetterco.com

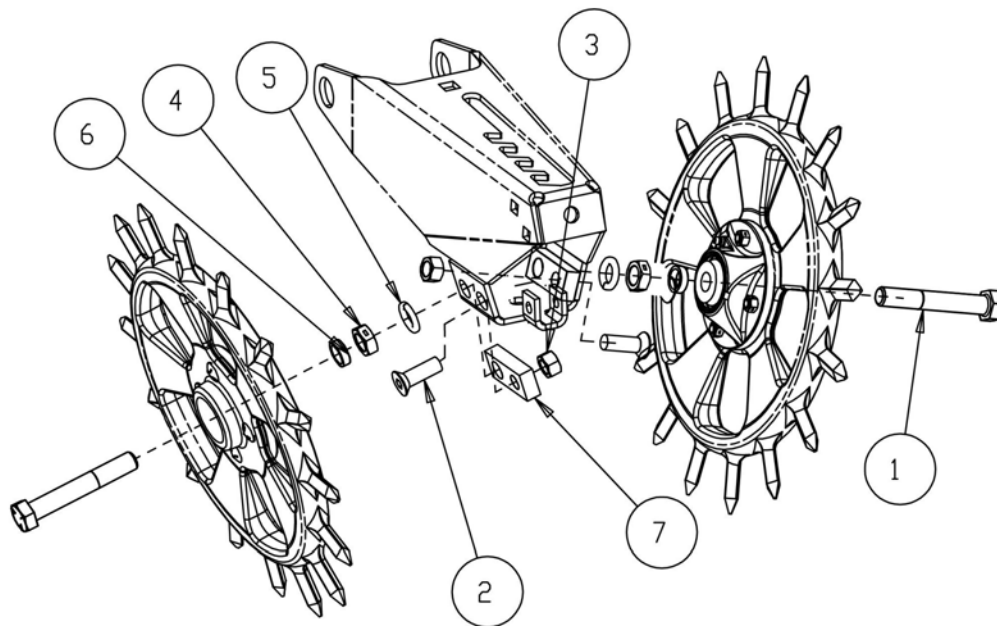
YETTER

ASSEMBLY

6200-050 INTERCHANGER™

FOR KINZE, YETTER AND WHITE 8000 SERIES V-CLOSING WHEELS

1. Attach the 6200-428 Interchanger™ Block to the V-closing wheel arm using ½” flange head bolt and ½” hex nut.
2. Assemble the Interchanger™ closing wheel using the 5/8” x 4” cap screw, ¼” spacer, 5/8” jam nut, 5/8” lock washer.
3. Attach the Interchanger™ closing wheel to the closing wheel arm in the 5/8” threaded hole of the Interchanger™ block, start the 5/8” lap screw threading by hand 1 full turn before using an impact or socket wrench.



1825-050

6200-050

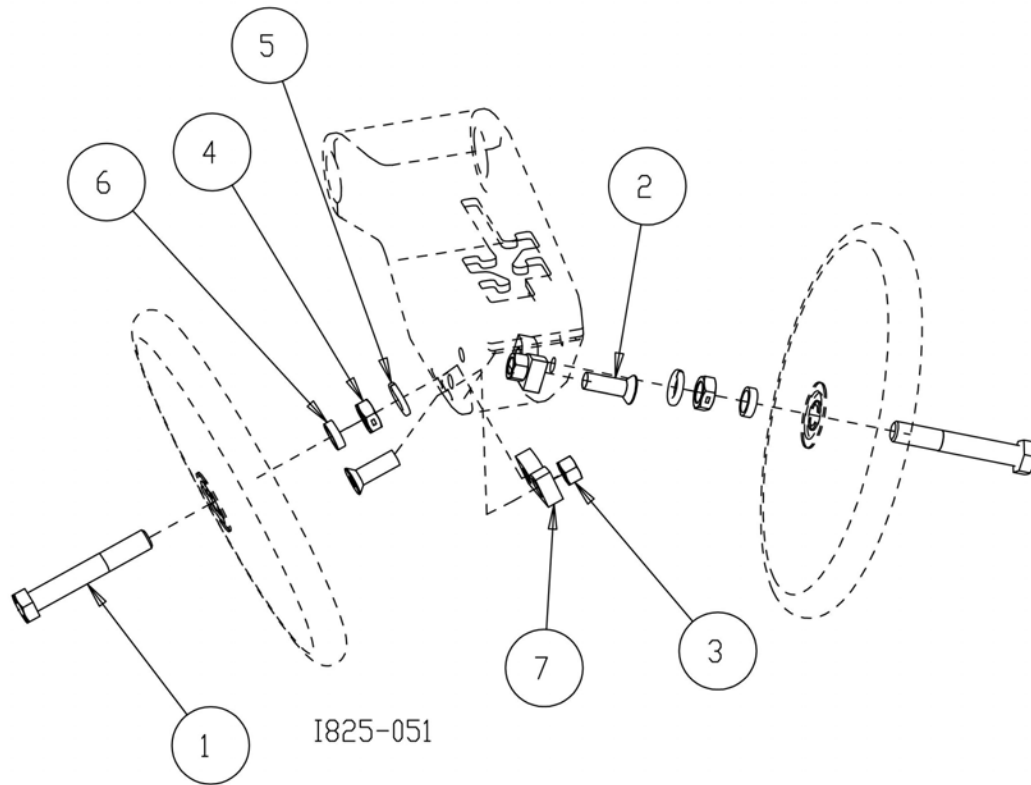
INTERCHANGER KIT (KINZE, YETTER AND WHITE 8000 CLOSING WHEELS)

ITEM	PART #	DESCRIPTION	QTY
1	2502-336	5/8-11 X 4 CAP SCREW GR. 5	2
2	2503-352	1/2-13 X 1-1/2 FLANGE HEAD BOLT	2
3	2520-352	1/2-13 HEX NUT ZP	2
4	2520-467	WU/ 5/8-11 HEX LOCKNUT JAM	4
5	2525-451	5/8 MED LOCKWASHER	2
6	6000-336	SPACER 1/4"	2
7	6200-428	INTERCHANGER - RETANGLE	2

ASSEMBLY

6200-051 INTERCHANGER™ FOR JOHN DEERE 1700 SERIES V-CLOSING WHEELS

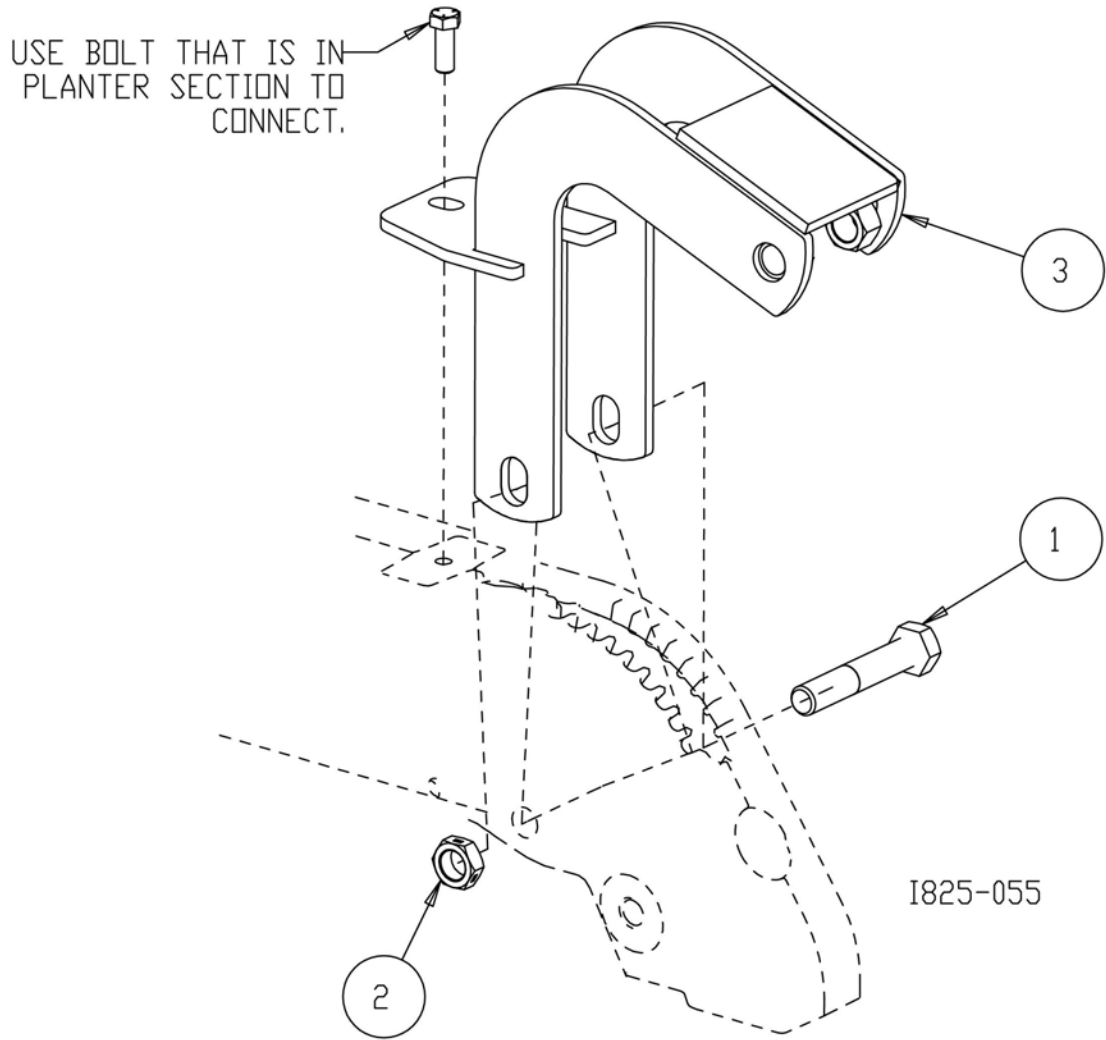
4. Attach the 6200-427 Interchanger™ Block to the V-closing wheel arm (notch facing up) using ½” flange head bolt and ½” hex nut.
5. Assemble the Interchanger™ closing wheel using the 5/8” x 4” cap screw, ¼” spacer, 5/8” jam nut, 5/8” lock washer.
6. Attach the Interchanger™ closing wheel to the v-closing wheel arm in the 5/8” threaded hole of the Interchanger™ block, start the 5/8” lap screw threading by hand 1 full turn before using an impact or socket wrench.



6200-051 INTERCHANGER (™) KIT (JOHN DEERE 1700)

ITEM	PART #	DESCRIPTION	QTY
1	2502-336	5/8-11 X 4 CAP SCREW GR. 5	2
2	2503-352	1/2-13 X 1-1/2 FLANGE HEAD BOLT	2
3	2520-352	1/2-13 HEX NUT	2
4	2520-467	5/8-11 HEX LOCKNUT JAM	4
5	2525-451	5/8 MED LOCKWASHER	2
6	6000-336	SPACER 1/4"	2
7	6200-427	INTERCHANGER - NOTCHED	2

ASSEMBLY



6200-055
CLOSING WHEEL MOUNT

ITEM	PART #	DESCRIPTION	QTY
1	2502-326	5/8-11" X 3-1/2" CAP SCREW GR8	1
2	2520-467	5/8-11" HEX LOCKNUT JAM	1
3	6200-231	CLOSING WHEEL MOUNT W.A.	1

NOTES:

NOTES:

NOTES:

Our name Is getting known

Just a few years ago, Yetter products were sold primarily to the Midwest only. Then we embarked on a program of expansion and moved into the East, the South, the West and now north into Canada. We're even getting orders from as far away as Australia and Africa.

So, when you buy Yetter products . . .you're buying a name that's recognized. A name that's known and respected. A name that's become a part of American agriculture and has become synonymous with quality and satisfaction in the field of conservation tillage.

Thank you.

YETTER MANUFACTURING CO.

Colchester, IL 62326-0358 • 309/776-4111

Toll Free 800/447-5777

Fax 309/776-3222

Website: WWW.YETTERCO.COM

E-MAIL: INFO@YETTERCO.COM