



**3600 SERIES
FERTILIZER TOOLBAR
FOR SELF PROPELLED SPRAYERS**

**OPERATOR'S MANUAL
PART IDENTIFICATION**



YETTER MANUFACTURING CO.
FOUNDED 1930

Colchester, IL 62326-0358
Toll free: 800/447-5777
309/776-3222 (Fax)
Website: www.yetterco.com
E-mail: info@yetterco.com

YETTER

FOREWORD

You've just joined an exclusive but rapidly growing club.

For our part, we want to welcome you to the group and thank you for buying a Yetter product.

We hope your new Yetter products will help you achieve both goals-increase your productivity and increase your efficiency so that you may generate more profit.

This operator's manual has been designed into four major sections: Foreword, Safety Precautions, Installation Instructions and Parts Breakdown.



This **SAFETY ALERT SYMBOL** indicates important safety messages in the manual. When you see this symbol, be alert to the possibility of **PERSONAL INJURY** and carefully read the message that follows.

The word **NOTE** is used to convey information that is out of context with the manual text. It contains special information such as specifications, techniques and reference information of a supplementary nature.

The word **IMPORTANT** is used in the text when immediate damage will occur to the machine due

to improper technique or operation. Important will apply to the same information as specified by note only of an immediate and urgent nature.

It is the responsibility of the user to read the operator's manual and comply with the safe and correct operating procedure and to lubricate and maintain the product according to the maintenance schedule in the operator's manual.

The user is responsible for inspecting his machine and for having parts repaired or replaced when continued use of the product would cause damage or excessive wear to the other parts.

It is the user's responsibility to deliver his machine to the Yetter dealer who sold him the product for service or replacement of defective parts, which are covered by the warranty policy.

If you are unable to understand or follow the instructions provided in this publication, consult your local Yetter dealer or contact:

YETTER MANUFACTURING CO.

309/776-4111

800/447-5777

309/776-3222 (FAX)

Website: www.yetterco.com

E-mail: info@yetterco.com

WARRANTY

Yetter Manufacturing warrants all products manufactured and sold by it against defects in material. This warranty being expressly limited to replacement at the factory of such parts or products as shall appear to be defective after inspection. This warranty does not obligate the Company to bear cost of labor in replacement of parts. It is the policy of the Company to make improvements without incurring obligations to add them to any unit already sold. No warranty is made or authorized to be made, other than herein set forth. This warranty is in effect for one year after purchase.

Dealer _____

Yetter Manufacturing warrants its own products only and cannot be responsible for damages to equipment on which mounted.

SAFETY PRECAUTIONS

You can make your farm a safer place to live and work if you observe the safety precautions given. Study these precautions carefully and insist those working with you and for you follow the precautions.

Finally, remember this an accident is usually caused by someone's carelessness, neglect or oversight.

A brief description of signal words that may be used in this manual:

CAUTION: Used as a general reminder of good safety practices or to direct attention to unsafe practices.

WARNING: Denotes a specific potential hazard.

DANGER: Denotes the most serious specific potential hazard.



CAUTION

Consult your implement and tractor operator's manual for correct and safe operating practices. Be aware of towed implement width and allow safe clearance.



CAUTION: SAFETY SIGNS

Safety decals are placed on the implement to alert the operator and others to the risk of personal injury or unsafe operation during normal operations and servicing.

1. The safety decals must be kept clean and in good condition to ensure that they are legible.
2. Safety decals must be replaced if they are missing or illegible.
3. When components are replaced during repair or servicing, check that the new components include the necessary safety signs.
4. Replacement safety decals may be obtained from your local dealer.



WARNING

Read these instructions carefully to acquaint yourself with the Equipment. Working with unfamiliar equipment can lead to accidents.

Never park the equipment on a steep incline or leave the equipment running unattended.

Never clean, lubricate or adjust a machine that is in motion.

Always check that straps are secure.

Make sure latches are in pinned position when moving equipment.

Do not allow children to operate this equipment.

Do not allow riders on the equipment, trailer and/or pick-up.

Use speed and caution dictated by the terrain being traversed. Do not operate on any slope steep enough to cause tipping or loss of control.

Read and understand the operator's manual and require all other persons who will operate the equipment to do the same.

If operating on public roadways, where legal, be certain all lighting is operating properly and observe all traffic laws.

Beware of increased stopping distances and control effort when operating with implements attached.

Be familiar with all controls and be prepared to stop equipment quickly in an emergency.

FAILURE TO HEED MAY RESULT IN PERSONAL INJURY OR DEATH.

ASSEMBLY BOLT TORQUE

Mounting bolts and hardware

Before operating the FERTILIZER TOOLBAR for the first time, check to be sure that all hardware is tight. Check all hardware again after approximately 50 hours of operation and at the beginning of each planting season.

All hardware used on the FERTILIZER TOOLBAR is Grade 5 unless otherwise noted. Grade 5 cap screws are marked with three radial lines on the head. If hardware must be replaced, be sure to replace it with hardware of equal size, strength and thread type. Refer to the torque values chart when tightening hardware.







Important: Over tightening hardware can cause as much damage as when under tightening. Tightening hardware beyond the recommended range can reduce its shock load capacity.

The chart below is a guide for proper torque. Use it unless a specified torque is called out elsewhere in the manual.

Torque is the force you apply to the wrench handle or the cheater bar, times the length of the handle or bar.

Use a torque wrench whenever possible.

The following table shows torque in ft. lbs. for coarse thread hardware.

BOLT DIA. AND THREADS PER INCH	 GRADE 2	 OR  GRADE 5 A-325	 GRADE 8
1/4	6	10	14
5/16	12	20	30
3/8 -16	25	35	50
7/16 - 14	35	55	80
1/2 - 13	55	85	125
9/16 - 12	75	125	175
5/8 - 11	105	170	235
3/4 - 10	185	305	425
7/8 - 9	170	445	690
1-8	260	670	1030
1 1/8 - 7	365	900	1460
1 1/4 - 7	515	1275	2060
1 3/8 -6	675	1675	2700
1 1/2 - 6	900	2150	3500
1 3/4 - 5	1410	3500	5600

Lubricate all bearings and moving parts as assembled and make certain that they work freely.



WARNING: Never work around the toolbar/implement while in a raised position without using safety lockups.



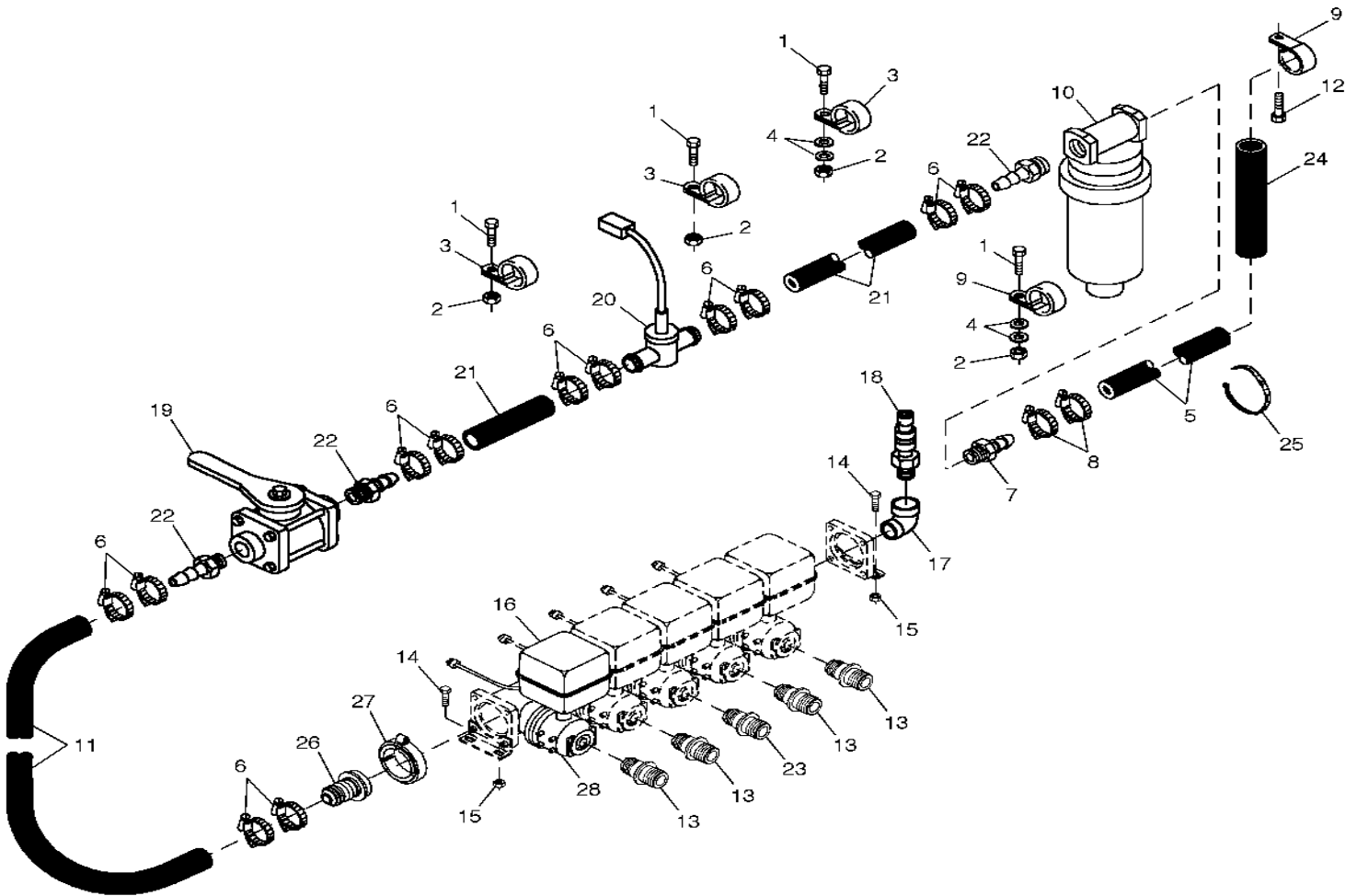
CAUTION: The FERTILIZER TOOLBAR and its attachments are very heavy. Pay extra attention to lifting techniques while handling and or maneuvering the opener during assembly. Failure to do so may lead to personal injury.

JD 4710/4720 SELF-PROPELLED SPRAYER FERTILIZER TOOLBAR

SELF-PROPELLED SPRAYER FERTILIZER TOOLBAR

Suggested list of items ***not*** provided by YETTER Manufacturing Co.

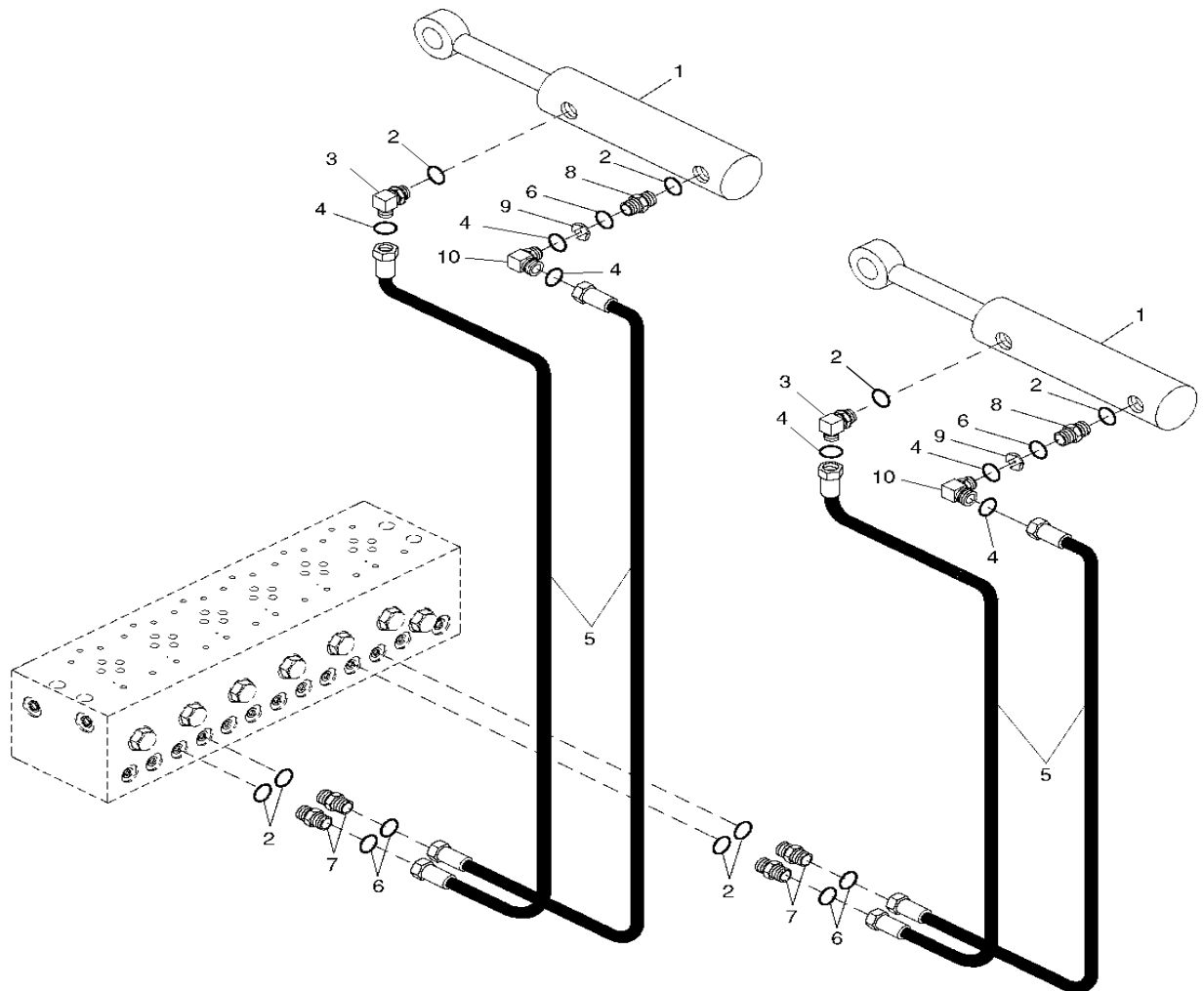
- Solution Filter, Flow Meter, Valves, Hoses, Quick Coupler and Fittings



SELF-PROPELLED SPRAYER FERTILIZER TOOLBAR

- Numbered labels 1-12, quantity 3 sets
- Plugs JD #38H1445 for hydraulic hoses, quantity 20
- Caps JD #38H1414 for hydraulic manifold, quantity 12
- Hydraulic hose-4@127" and 4@97" with end to fit JD#38H1159 adapter, #T77814 O-ring and end to fit -6 JIC.

Suggested list of items ***not*** provided by YETTER Manufacturing Co.

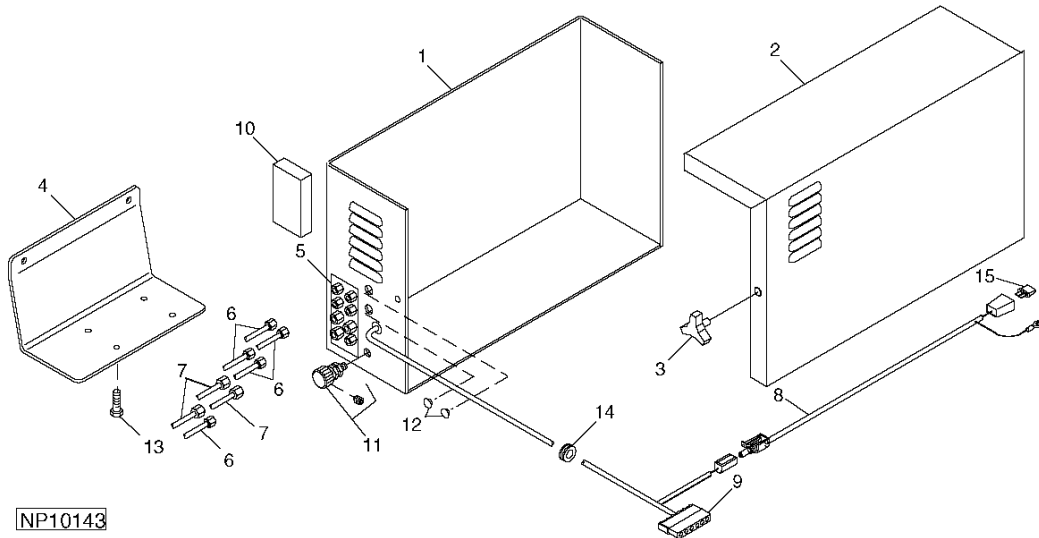


NP12539

SELF-PROPELLED SPRAYER FERTILIZER TOOLBAR

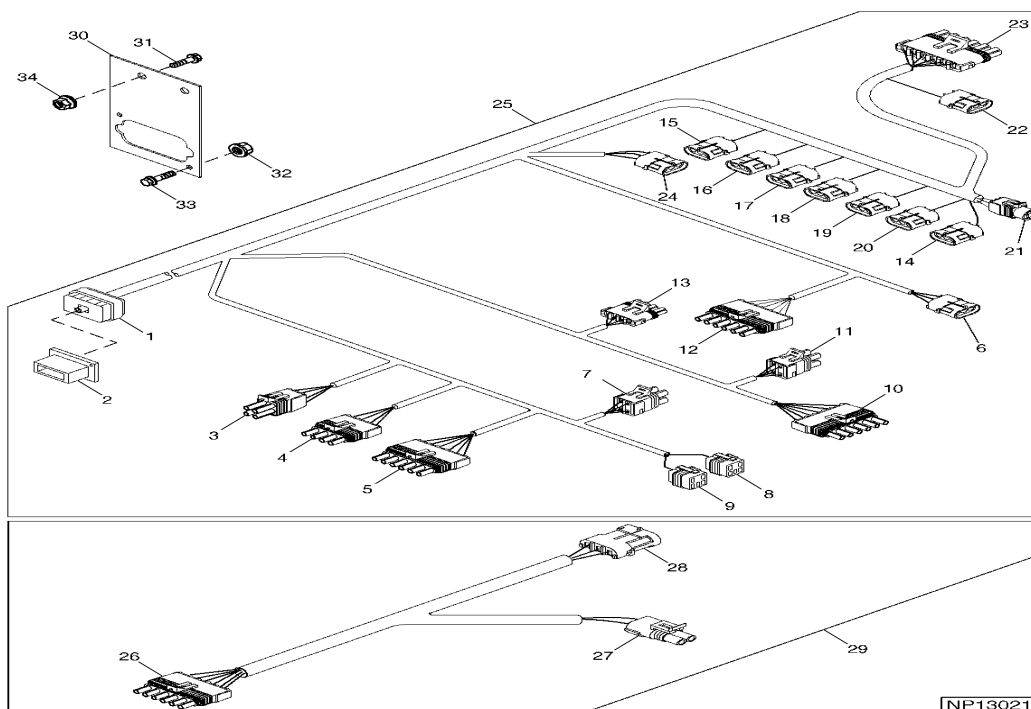
-Numbered labels 1-8, quantity 2 sets to
Identify the foam marker hoses.

Suggested list of items ***not*** provided by YETTER Manufacturing Co.



NP10143

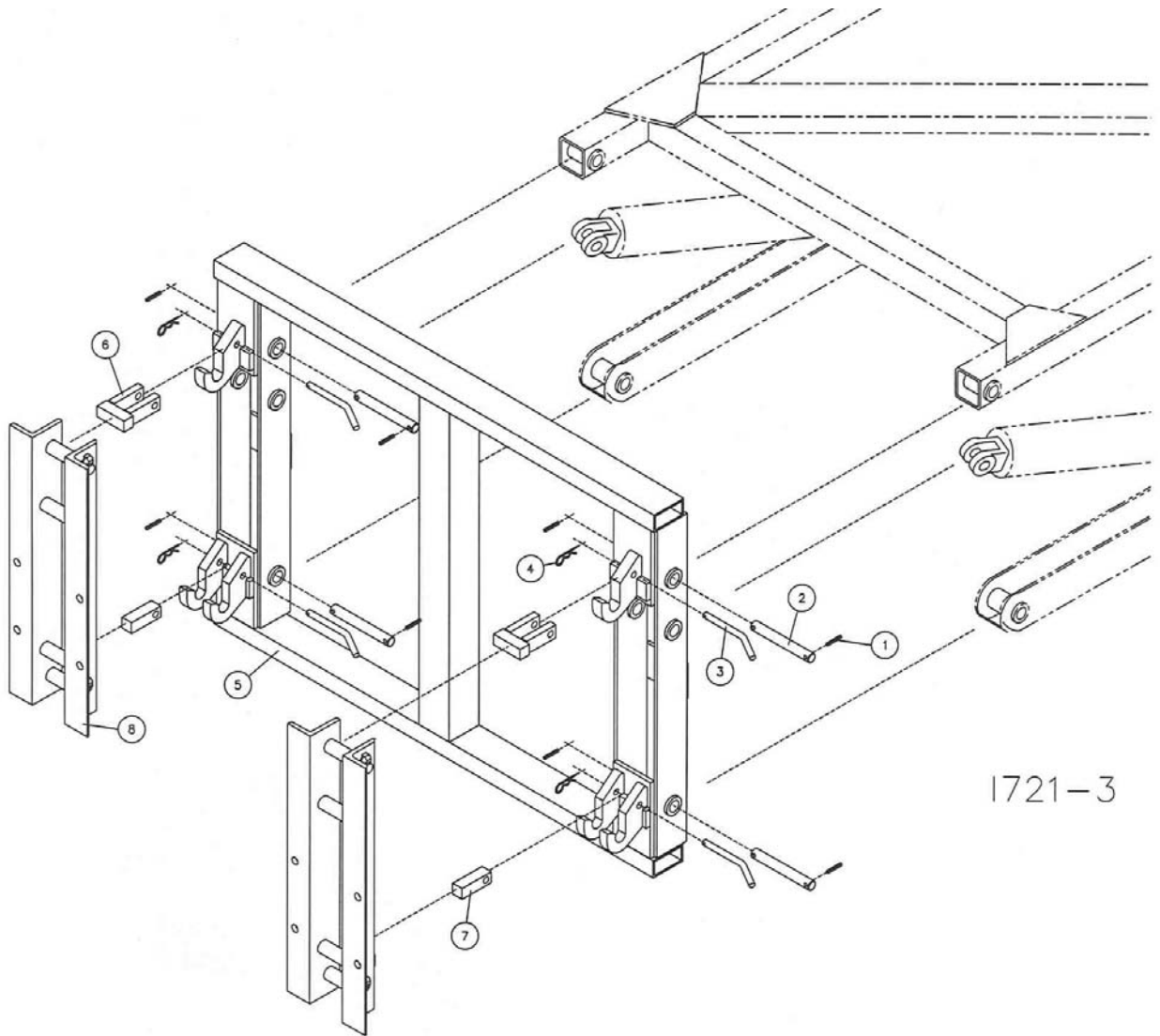
- Wiring Harness
- 37 Pin female receptacle quantity 01
- 37 Pin male connector quantity 02
- Sensor connector JD# 57M7796 quantity 01
- Flow meter connector JD# 57M7257 quantity 01
- 3 Pin weather pack connector quantity = # of section
- Control valves



NP13021

Yetter Manufacturing Company reserves the right to alter equipment specifications without notice or obligation. Yetter Manufacturing Company offers the information contained in this guide in good faith. However, the use of the information provided is beyond the control of Yetter Manufacturing Company and in no case shall Yetter Manufacturing Company or any seller of its products be responsible for any damages that may occur from the use of this information. The user shall assume all such risks. Due to the equipment and specifications involved, the possibility of error does exist. If you discover such an error, please notify Yetter Manufacturing Company as soon as possible so that it can be corrected. This list was compiled from customer suggestions based on their individual needs and preferences.

PARTS IDENTIFICATION



1721-3

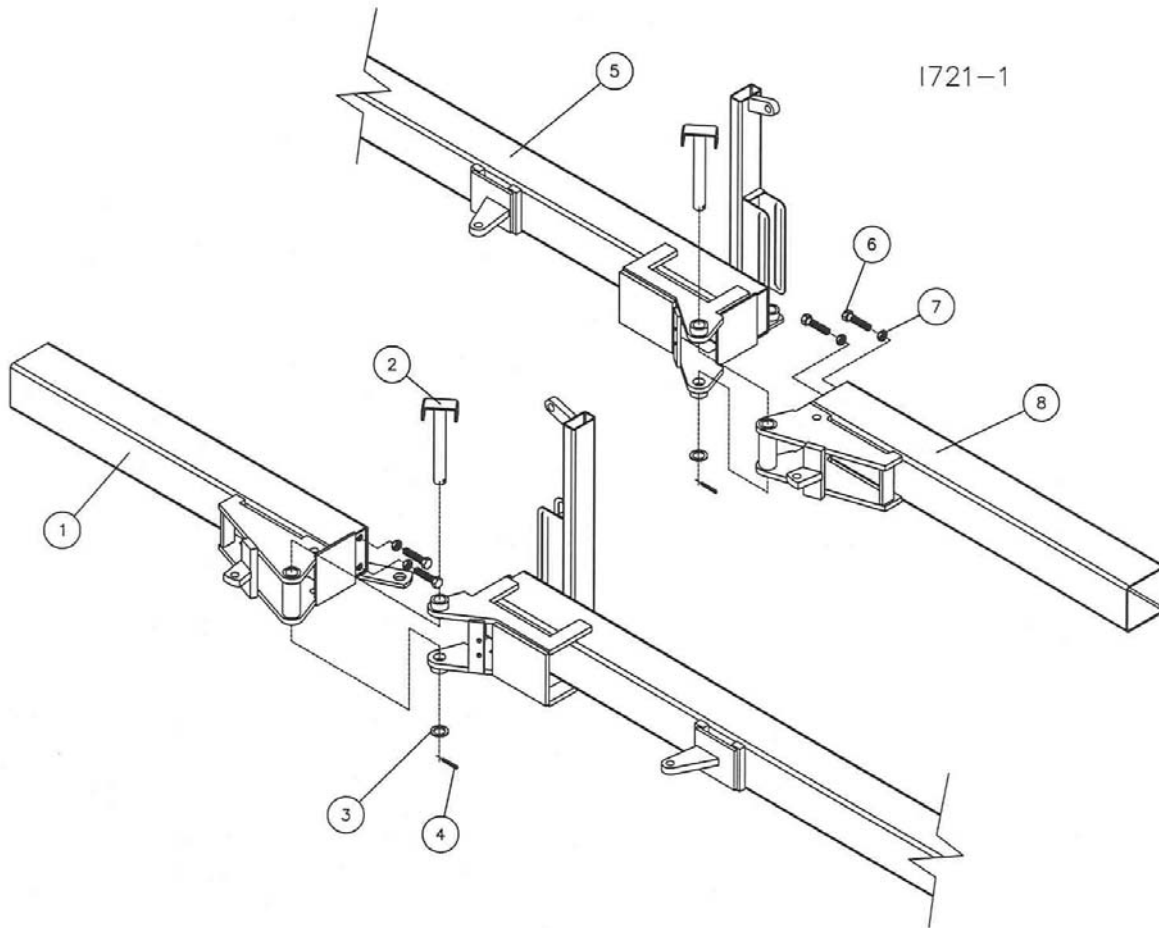
QUICK HITCH ASSEMBLY

DET	QTY	PART NO.	DESCRIPTION
1	8	2530-212	3/8 X 2 ROLL PIN ZYD.
2	4	3600-318	SPRAYER HITCH PIN ZYD
3	4	3600-321	LOCK PIN ZYD
4	4	2570-448	1/8 STANDARD HAIRPIN COTTER ZP
5	1	3600-202	QUICK HITCH W.A.
6	2	3600-219	UPPER LOCK W.A.
7	2	3600-332	LOWER LOCK BLOCK
8	2	3600-117	HITCH ASS'Y, MAIN

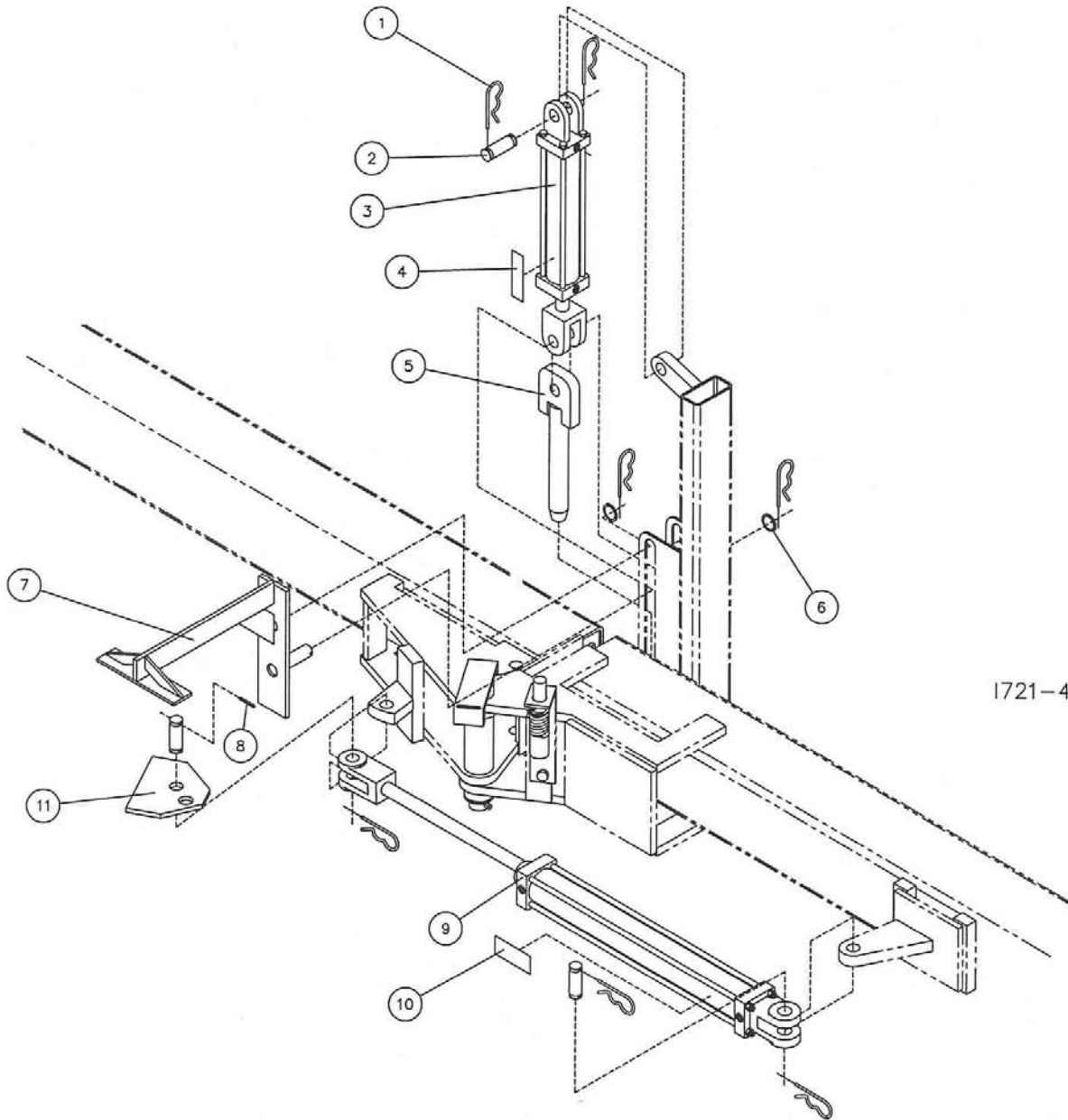
PARTS IDENTIFICATION

3600-109 26" TOOLBAR ASSEMBLY

DET	QTY	PART NO.	DESCRIPTION
1	1	3600-207	26' REAR FOLD WING W.A., L.H.
2	2	3500-200	HINGE PIN WELD ASSEMBLY
3	2	2527-555	1-1/2ID X2-1/4OD X10GA BUSHING
4	2	2530-208	3/8 X 2-1/2 ROLL PIN ZP
5	1	3600-209	26' REAR FOLD CENTER W.A.
6	4	2502-604	7/8-9X3-1/2 THD HD TP BLT
7	4	2520-543	7/8-9 JAM HEX NUT ZP
8	1	3600-208	26' REAR FOLD WING W.A., R.H.



PARTS IDENTIFICATION

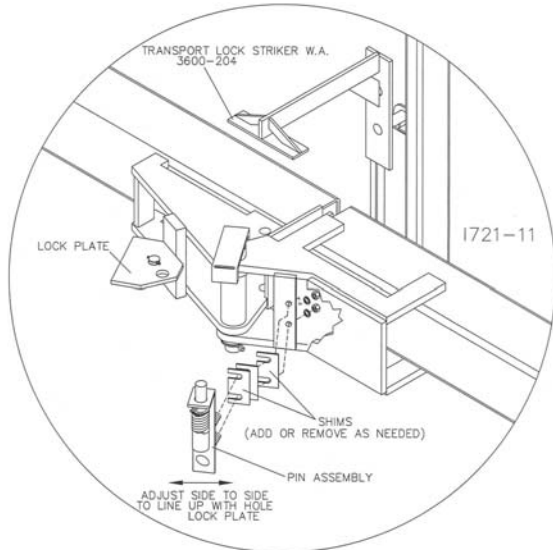


TRANSPORT LOCK & CYL. PARTS ASSEMBLY

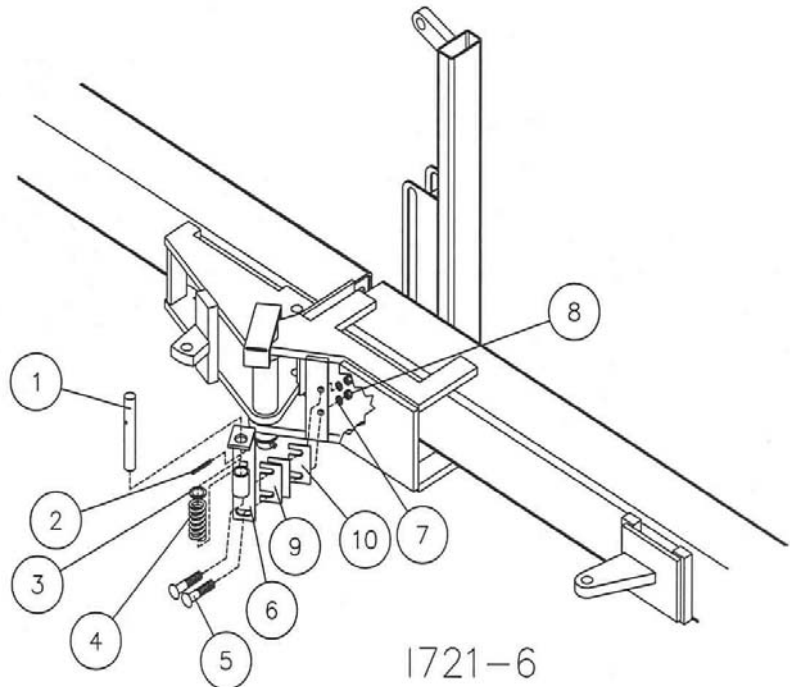
DET	QTY	PART NO.	DESCRIPTION
1	14	2570-465	7 GA. HAIRPIN COTTER ZP.
2	6	2515-172	CYLINDER CLEVIS PIN, ZP
3	2	6300-340	2-1/2 X 8 CYLINDER, (SAE)
4	2	2565-286	DECAL, 3" CYLINDER SEAL KIT
5	2	3600-203	LOCK PIN W.A.
6	4	2527-564	1"ID X1-1/2OD X14GA MACH BU ZP
7	2	3600-204	TRANSPORT LOCK STRIKER W.A.
8	2	2530-108	ROLL PIN, 3/16 X 1 1/2 ZYD
9	2	2515-336	3 X 16 ASAE CYLINDER (SAE)
10	2	2565-286	3" RKF'D SEAL KIT DECAL
11	2	3600-344	WING STOP PLATE

PARTS IDENTIFICATION

IMPORTANT: When the toolbar is in the folded position the lock pin 3600-345 must not bind in the wing stop plate 3600-344. The pin must be adjusted with shims and correctly positioned by moving the pin assembly on the slotted holes of the 3600-223 pin lock bracket. When the lock pin is not being held down with the transport lock striker 3600-204, the spring should be to pull the lock pin up out of the lock plate. Use never-seize to aid the pin to move freely.



TRANSPORT LOCK PIN ASSEMBLY

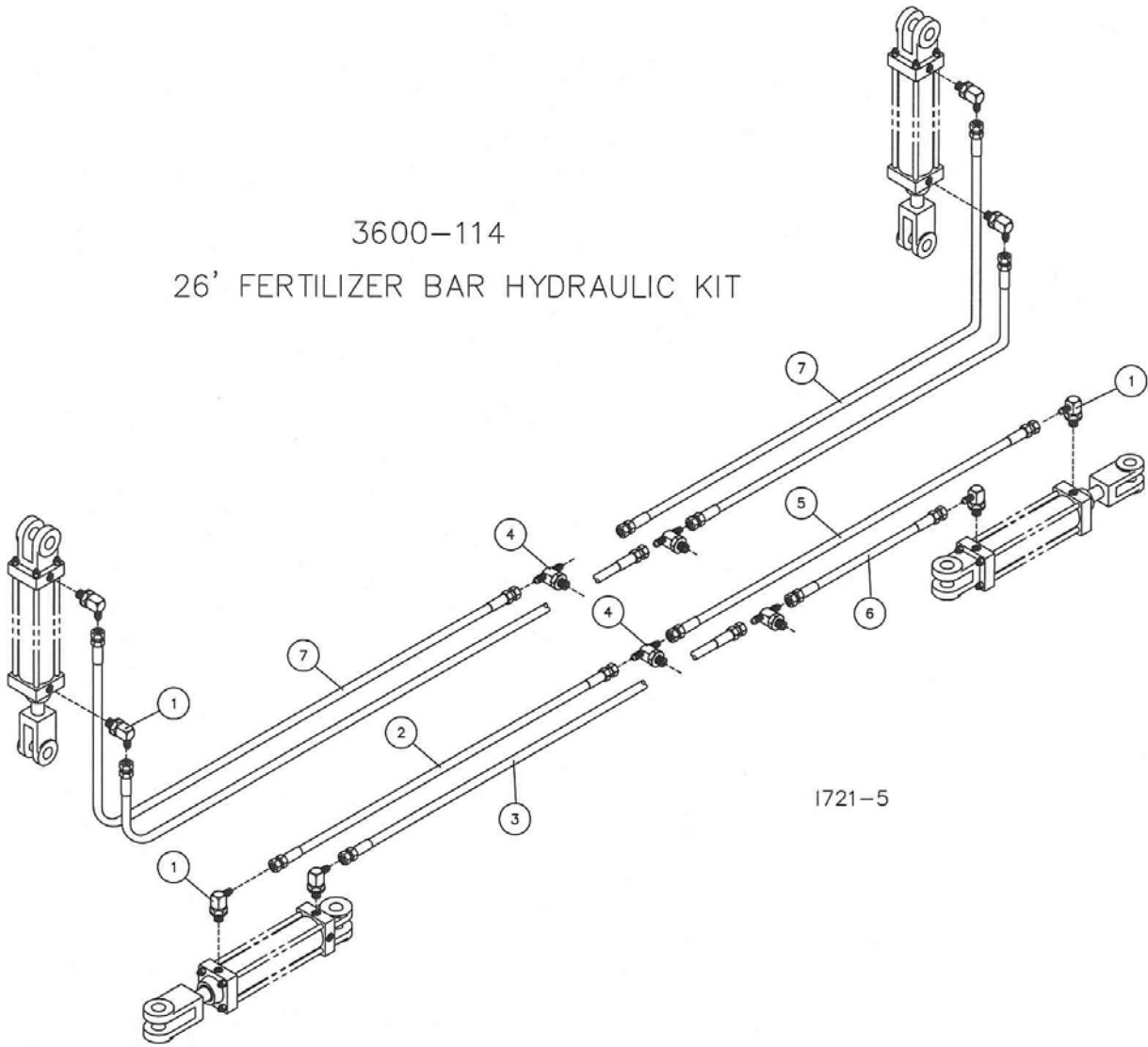


DET	QTY	PART NO.	DESCRIPTION
1	2	3600-345	LOCK PIN ZYD.
2	2	2530-153	1/4 X 2 ROLL PIN ZP
3	2	2527-564	1"ID X1-1/2OD X14GA MACH BU ZP
4	2	2550-761	THROW OUT CLUTCH SPRING, BLACK
5	4	2505-339	1/2-13 X 1-1/2 CAR BLT GR. 5 ZP
6	2	3600-223	PIN LOCK W.A.
7	4	2525-352	1/2 MED LOCKWASHER ZP
8	4	2520-352	1/2-13 HEX NUT ZP
9	4	3600-387	11 GA. LOCK SHIM, ZYD
10	2	3600-388	.060 LOCK SHIM, ZYD

SHIM AS NEEDED

PARTS IDENTIFICATION

3600-114
26' FERTILIZER BAR HYDRAULIC KIT

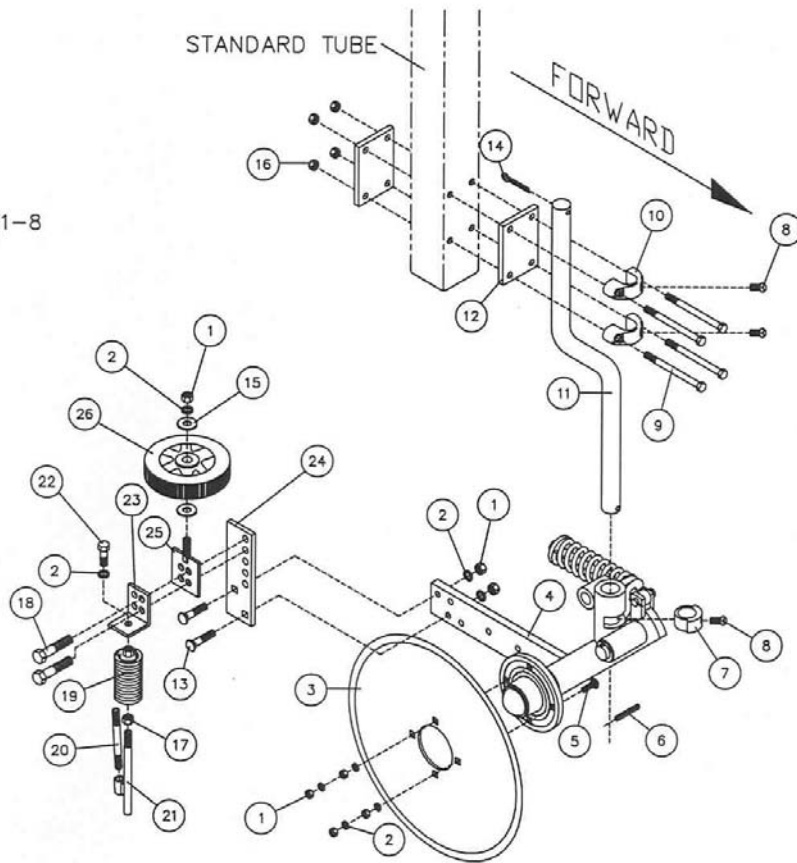


DET	QTY	PART NO.	DESCRIPTION
1	8	2515-330	90 DEG, REST, 3/4 SAE TO -6 JIC
2	1	2515-363	HOSE, 1/4 X 80 W/-6 JIC
3	1	2515-362	HOSE, 1/4 X 75 W/-6 JIC
4	4	2515-326	TEE, -6/-6/-6 JIC
5	1	2515-358	HOSE, 1/4 X 50 W/-6 JIC
6	1	2515-356	HOSE, 1/4 X 35 W/-6 JIC
7	4	2515-365	HOSE, 1/4 X 100 W/-6 JIC

PARTS IDENTIFICATION

COULTER ASSEMBLY

1721-8



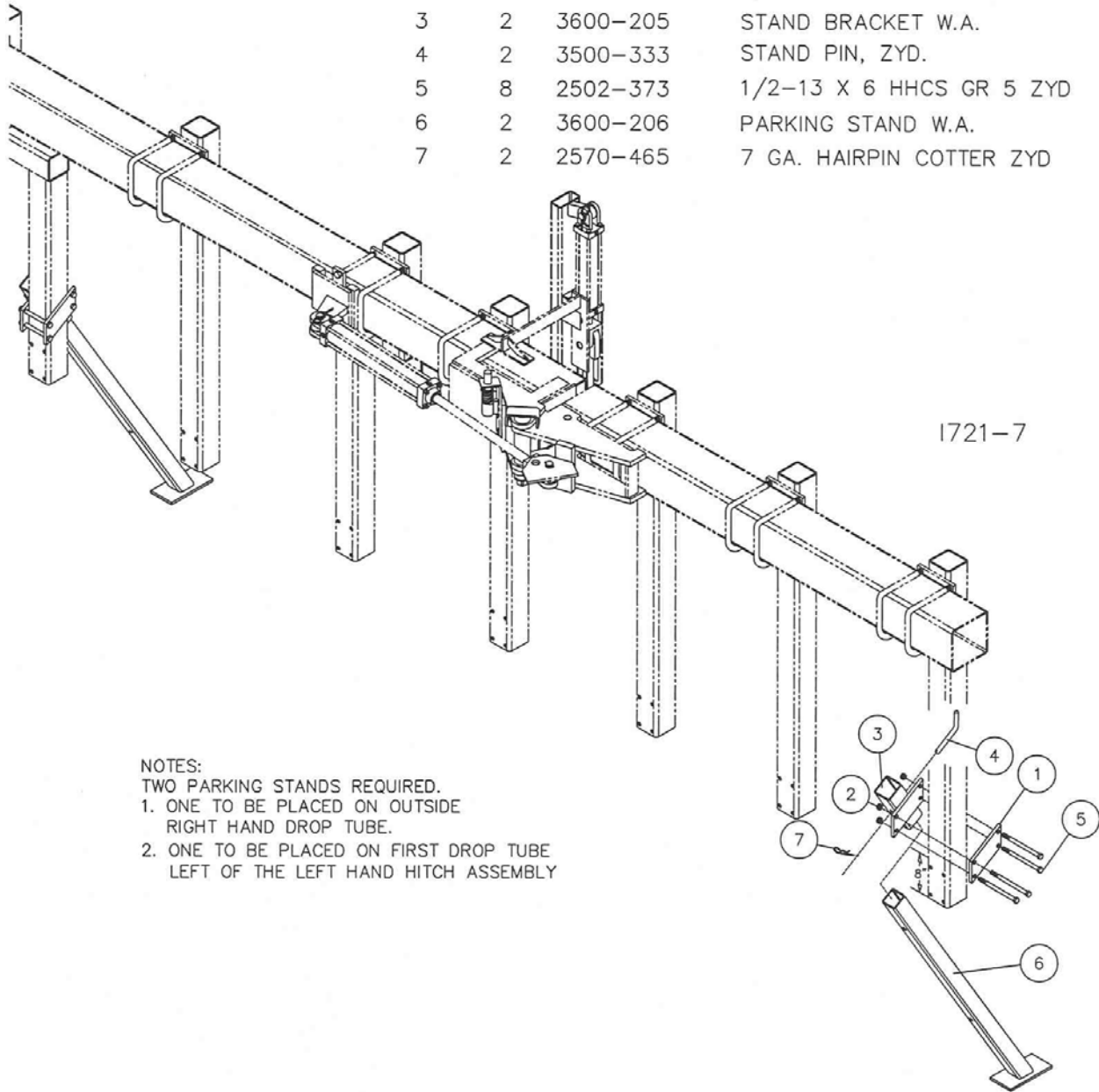
DET	QTY	PART NO.	DESCRIPTION
1	7	2520-352	1/2-13 HEX NUT ZYD
2	6	2525-352	1/2 MED LOCK WASHER ZYD.
3	1	2571-178	.25X20 STRAIGHT BLADE W/SQHOLE
4	1	2995-012	GEN III CLTR W/KNIFE ARM ASSY
5	4	2505-337	1/2-13 X 1 1/4 CAR BOLT GR 5 ZYD
6	1	2530-208	3/8 X 2 1/2 ROLL PIN ZYD
7	1	2975-303	2975 LOCKING COLLAR
8	3	2503-379	5/8-11 X 1 SQ. HCPSS GR 5 ZYD
9	4	2502-371	1/2-13 X 7 HHCS GR 5 ZYD
10	2	2990-360	CLAMP CASTING, DRILLED
11	1	3011-302	OFFSET COULTER SHANK, 5 1/2"
12	2	2990-314	CLAMP PLATE, 4" SQ. 3" DIAMOND
13	2	2505-344	1/2-13 X 1-3/4 CAR BLT GR 5 ZYD

DET	QTY	PART NO.	DESCRIPTION
14	1	2531-161	5/16 X 2-1/2 COTTER PIN ZYD
15	2	2526-453	5/8 SAE FLAT WASHER ZYD
16	4	2520-357	1/2-13 HEX LOCK NUT ZYD
17	1	2520-356	1/2-13 JAM HEX NUT ZYD
18	2	2502-294	1/2-13 X 1 1/2 HHCS GR 5 ZYD
19	1	2995-131	SPRING INJECTOR ASSEMBLY
20	1	2515-311	3" NIPPLE, 1/4 NPT STAINLESS STL
21	1	2995-212	INJECTOR ROD W.A., 1/2-13
22	1	2502-292	1/2-13 X 1 HHCS GR 5 ZYD
23	1	2995-301	INJECTOR MOUNT PLATE
24	1	2975-389	ADJUSTMENT PLATE, INJECTOR
25	1	3600-231	BUMPER SHIM PLATE W.A.
26	1	3600-383	7" PLASTIC WHEEL

PARTS IDENTIFICATION

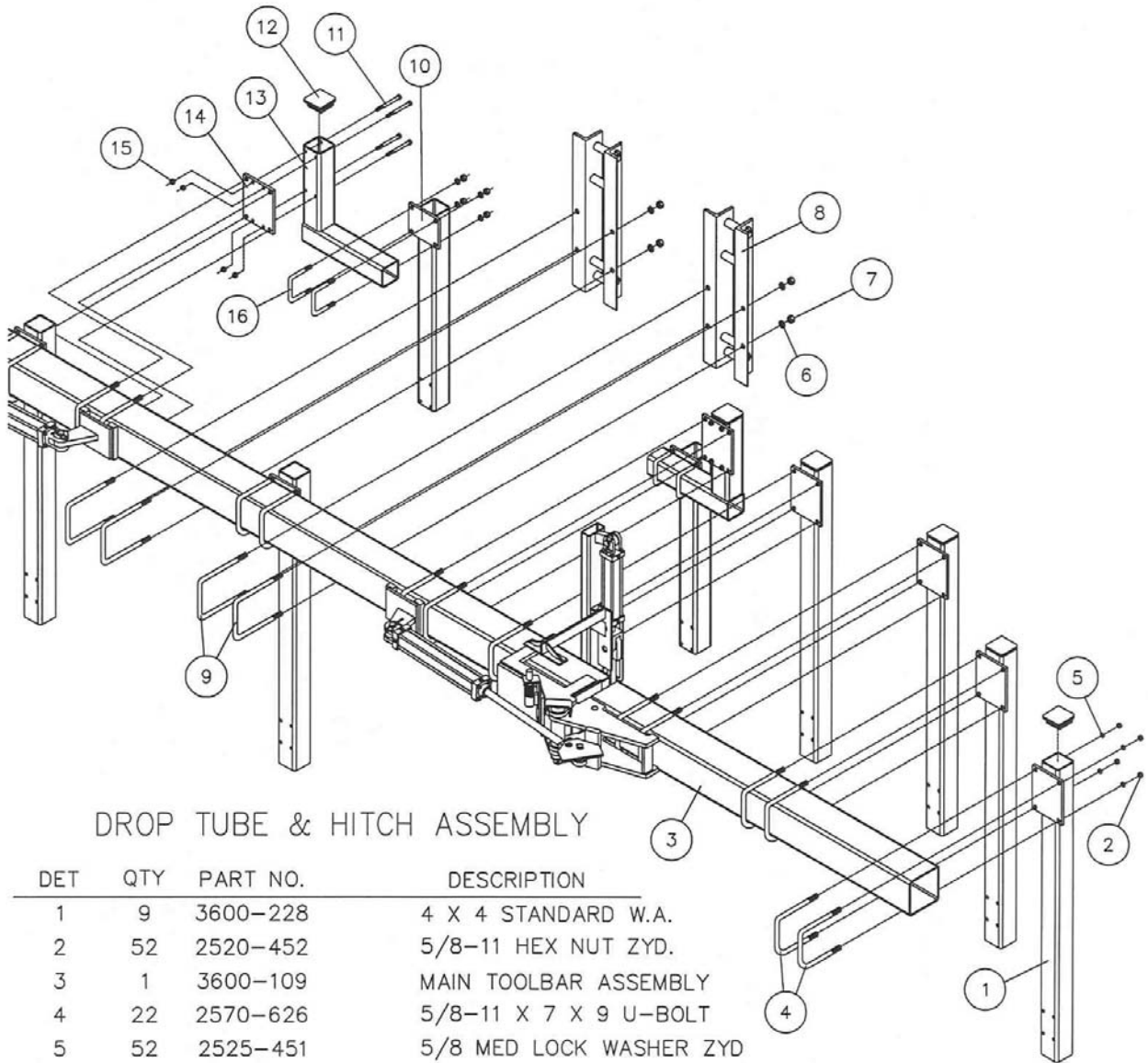
3600-116 - PARKING STAND ASSEMBLY

DET	QTY	PART NO.	DESCRIPTION
1	2	3600-346	STAND MOUNT PLATE
2	8	2520-357	1/2-13 HEX LOCK NUT ZYD
3	2	3600-205	STAND BRACKET W.A.
4	2	3500-333	STAND PIN, ZYD.
5	8	2502-373	1/2-13 X 6 HHCS GR 5 ZYD
6	2	3600-206	PARKING STAND W.A.
7	2	2570-465	7 GA. HAIRPIN COTTER ZYD



- NOTES:
 TWO PARKING STANDS REQUIRED.
 1. ONE TO BE PLACED ON OUTSIDE
 RIGHT HAND DROP TUBE.
 2. ONE TO BE PLACED ON FIRST DROP TUBE
 LEFT OF THE LEFT HAND HITCH ASSEMBLY

PARTS IDENTIFICATION

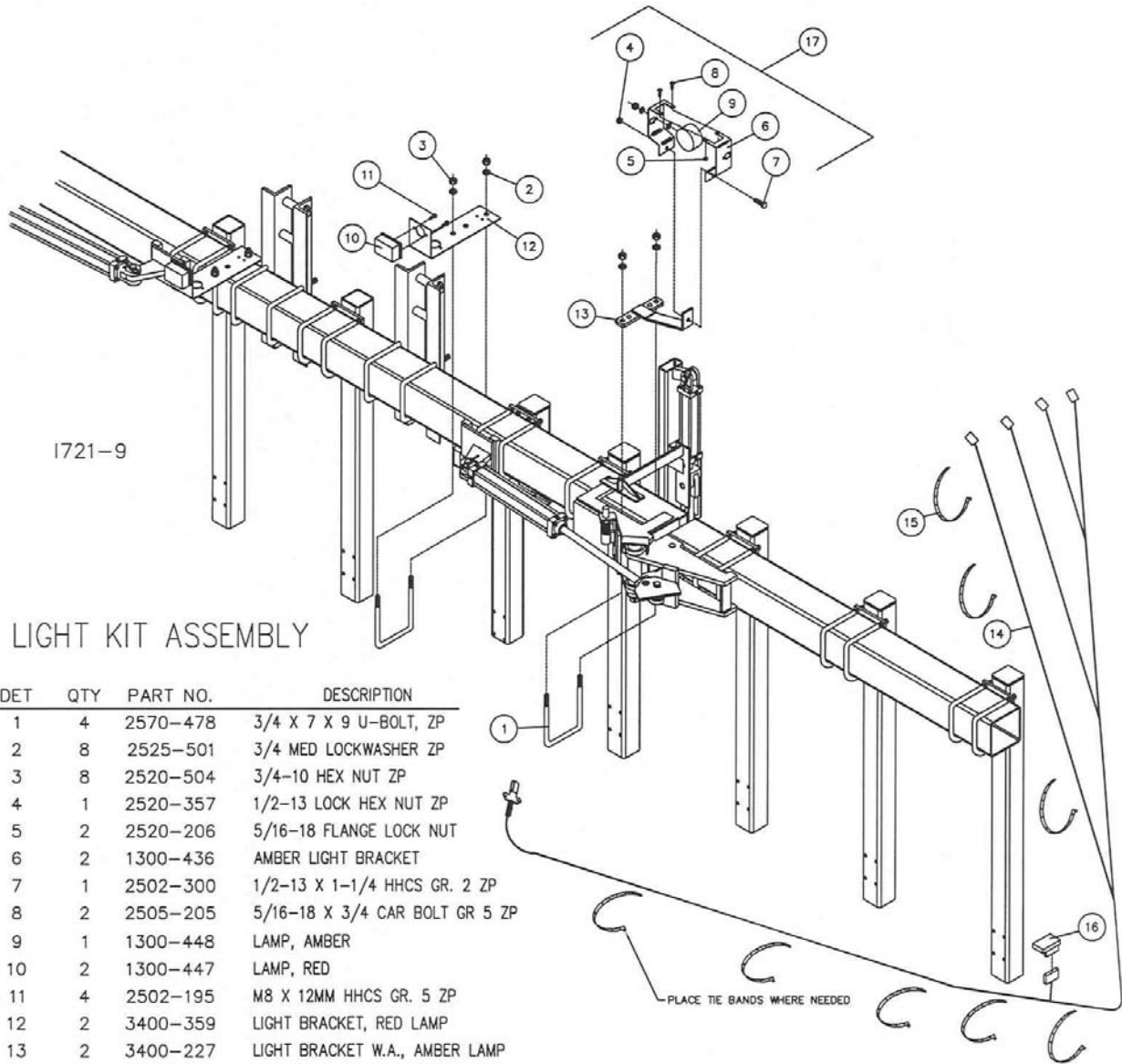


DROP TUBE & HITCH ASSEMBLY

DET	QTY	PART NO.	DESCRIPTION
1	9	3600-228	4 X 4 STANDARD W.A.
2	52	2520-452	5/8-11 HEX NUT ZYD.
3	1	3600-109	MAIN TOOLBAR ASSEMBLY
4	22	2570-626	5/8-11 X 7 X 9 U-BOLT
5	52	2525-451	5/8 MED LOCK WASHER ZYD
6	8	2525-501	3/4 MED LOCK WASHER ZYD
7	8	2520-504	3/4-10 HEX NUT ZYD
8	2	3600-117	HITCH ASSEMBLY
9	4	2570-478	3/4-10 X 7 X 9 U-BOLT ZYD
10	2	3600-230	SHORT DROP W.A.
11	8	2502-362	1/2-13 X 5 HHCS GR. 5 ZP
12	11	2515-710	END CAP, SQR-40-0408
13	2	3600-229	OFFSET W.A.
14	2	3600-378	OFFSET TUBE MOUNT
15	8	2520-357	1/2-13 LOCK HEX NUT ZP
16	4	2570-588	5/8 X 4 X 5-1/2 U-BOLT ZYD

1721-2

PARTS IDENTIFICATION

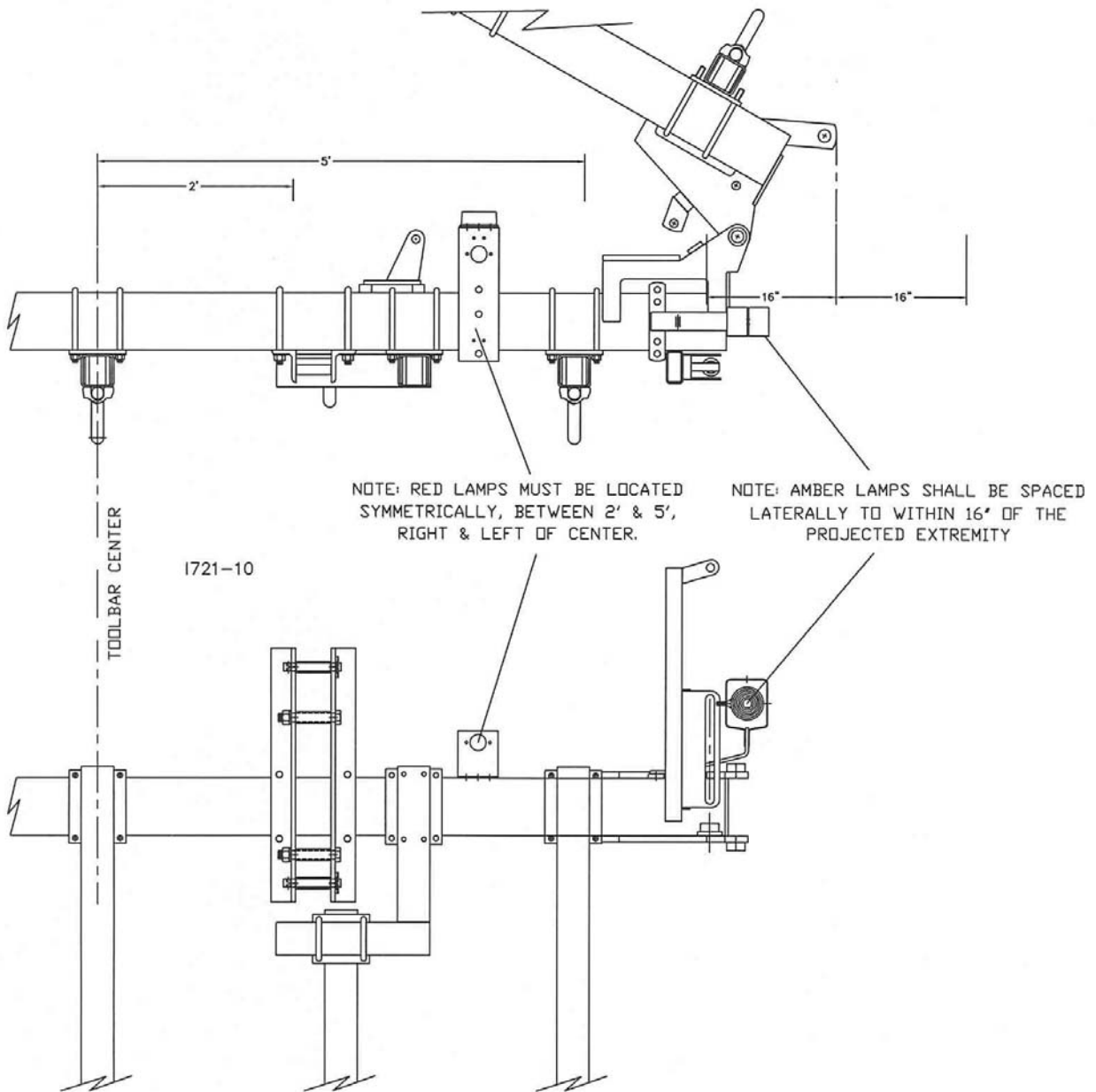


1721-9

LIGHT KIT ASSEMBLY

DET	QTY	PART NO.	DESCRIPTION
1	4	2570-478	3/4 X 7 X 9 U-BOLT, ZP
2	8	2525-501	3/4 MED LOCKWASHER ZP
3	8	2520-504	3/4-10 HEX NUT ZP
4	1	2520-357	1/2-13 LOCK HEX NUT ZP
5	2	2520-206	5/16-18 FLANGE LOCK NUT
6	2	1300-436	AMBER LIGHT BRACKET
7	1	2502-300	1/2-13 X 1-1/4 HHCS GR. 2 ZP
8	2	2505-205	5/16-18 X 3/4 CAR BOLT GR 5 ZP
9	1	1300-448	LAMP, AMBER
10	2	1300-447	LAMP, RED
11	4	2502-195	M8 X 12MM HHCS GR. 5 ZP
12	2	3400-359	LIGHT BRACKET, RED LAMP
13	2	3400-227	LIGHT BRACKET W.A., AMBER LAMP
14	1	1300-446	HARNES, COMMON WIRING
15	8	2515-405	CABLE TIE, BLACK
16	1	1300-445	MODULE, IMPLEMENT TURN SIGNAL
17	2	1300-137	AMBER LIGHT ASSEMBLY

LIGHT KIT LOCATIONS



SAFETY



WARNING: Before performing any work on a sprayer, be sure to clean and neutralize the sprayer.



CAUTION: Pesticides are hazardous and can poison causing serious injury or death to you or others. During application of hazardous pesticides, pesticide residue can build up on the inside or outside of the machine. Clean machine according to use instructions of hazardous pesticides. Refer to product label.

TROUBLESHOOTING

COMPONENT	CHECK FOR
<u>Solution System</u>	
High low flow valve	Leaks/corroded/operation
Boom section shut off valves	Leaks/corroded/operation
Check valves	Leaks/corroded/operation
Boom and suction strainers	Leaks/plugged/ripped
Hose clamps	Loose/worn/missing
Solution hoses	Collapsed/worn
<u>SprayStar Monitor</u>	
Wiring harness	Worn/Broken/corroded
Flow meter	Clean/Calibrate
Pressure transducer	Leaks/performance/calibrate
<u>Plumbing</u>	
Boom plumbing	Leaks/corroded
Nozzle bodies	Leaks/cracks/corroded
Nozzle tips	Calibrate/worn
Nozzle screens	Plugged/missing/ripped

MAINTENANCE

1. After washing, spray machine down with Spray Master Equipment coating (N205703-U.S., N207338-CAN.) to protect from chemicals and allow for future ease of cleaning.
2. Add 20-30 gallons of appropriate solution mixture of RV antifreeze for the desired temperatures.

NOTES

Our name Is getting known

Just a few years ago, Yetter products were sold primarily to the Midwest only. Then we embarked on a program of expansion and moved into the East, the South, the West and now north into Canada. We're even getting orders from as far away as Australia and Africa.

So, when you buy Yetter products . . .you're buying a name that's recognized. A name that's known and respected. A name that's become a part of American agriculture and has become synonymous with quality and satisfaction in the field of conservation tillage.

Thank you.

YETTER MANUFACTURING CO.
Colchester, IL 62326-0358 • 309/776-4111
Toll Free 800/447-5777
Fax 309/776-3222
Website: WWW.YETTERCO.COM
E-MAIL: INFO@YETTERCO.COM

2565-691_REV_A • 03/09