



Systems One

A YETTER COMPANY

SEED JET II

2565-441_REV_D 02/2012

YETTER MANUFACTURING CO.

FOUNDED 1930

Colchester, IL 62326-0358

Toll free: 800/447-5777

309/776-3222 (Fax)

Website: www.yetterco.com

E-mail: info@yetterco.com

YETTER


FOREWORD

You've just joined an exclusive but rapidly growing club.

For our part, we want to welcome you to the group and thank you for buying a Yetter product.

We hope your new Seed Jet II will help you achieve both increased productivity and increased efficiency so that you may generate more profit.

This operator's manual has been designed into four major sections: Foreword, Safety Precautions, Installation Instructions and Parts Breakdown.

 This **SAFETY ALERT SYMBOL** indicates important safety messages in the manual. When you see this symbol, be alert to the possibility of **PERSONAL INJURY** and carefully read the message that follows.

The word **NOTE** is used to convey information that is out of context with the manual text. It contains special information such as specifications, techniques, reference information of a supplementary nature.

The word **IMPORTANT** is used in the text when immediate damage will occur to the machine due to improper technique or operation. Important will apply to the same information as specified by note only of an immediate and urgent nature.

It is the responsibility of the user to read the operator's manual and comply with the safe and correct operating procedure and to lubricate and maintain the product according to the maintenance schedule in the operator's manual.

The user is responsible for inspecting his machine and for having parts repaired or replaced when continued use of the product would cause damage or excessive wear to the other parts.

It is the user's responsibility to deliver his machine to the Yetter dealer who sold him the product for service or replacement of defective parts, which are covered by the warranty policy.

If you are unable to understand or follow the instructions provided in this publication, consult your local Yetter dealer or contact: **SYSTEMS ONE**

309/776-4111
800/447-5777
309/776-3222 (FAX)
E-mail: info@yetterco.com

WARRANTY POLICY

Yetter Manufacturing warrants all products manufactured and sold by it against defect in material. This warranty being expressly limited to replacement at the factory of such parts or products as shall appear to be defective after inspection. This warranty does not obligate the Company to bear cost of labor in replacement of parts. It is the policy of the company to make improvements without incurring obligations to add them to any unit already sold. No warranty is made or authorized to be made other than herein set forth. This warranty is in effect for 1 year after purchase.

Dealer _____

Yetter Manufacturing warrants its own products only and cannot be responsible for damage to equipment on which mounted.

TABLE OF CONTENTS

Cover Page.....	1
Foreword.....	2
Table of Contents.....	3
Safety Information.....	4
General Information.....	5
Assembly Instructions	
1300-183 Power Unit Assembly.....	6
1300-120 Hopper Assembly.....	7
1300-124 Seed Jet II Hose Assembly.....	8-9
Operation.....	10
Maintenance.....	11
Parts Identification	
1300-121 Seed Jet II.....	12
1300-120 Hopper Assembly.....	13
1300-119 Airlock Assembly.....	14
1300-183 Power Unit Assembly.....	15-22
1300-124 Seed Jet II Hose Assembly.....	23
1300-166 Cyclone Exhaust kit.....	24
Cyclone Shutoff.....	24
1300-620 Remote Control (OPTIONAL).....	25
1300-178 Cyclone Switch Pack.....	25
Trouble Shooting.....	26

SAFETY PRECAUTIONS

You can make your farm a safer place to live and work if you observe the safety precautions given. Study these precautions carefully and insist those working with you and for you follow the precautions.

Finally, remember this an accident is usually caused by someone's carelessness, neglect or oversight.

A brief description of signal words that may be used in this manual:

CAUTION: Used as a general reminder of good safety practices or to direct attention to unsafe practices.

WARNING: Denotes a specific potential hazard.

DANGER: Denotes the most serious specific potential hazard.



CAUTION

Consult your implement and tractor operator's manual for correct and safe operating practices. Be aware of towed implement width and allow safe clearance.



CAUTION: SAFETY SIGNS

Safety decals are placed on the implement to alert the operator and others to the risk of personal injury or unsafe operation during normal operations and servicing.

1. The safety decals must be kept clean and in good condition to ensure that they are legible.
2. Safety decals must be replaced if they are missing or illegible.
3. When components are replaced during repair or servicing, check that the new components include the necessary safety signs.
4. Replacement safety decals may be obtained from your local dealer.



WARNING

Read these instructions carefully to acquaint yourself with the Seed Jet II. Working with unfamiliar equipment can lead to accidents.

Safety shields must always be in place during operation.

Never park the gravity wagon on a steep incline or leave the equipment running unattended.

Never clean, lubricate or adjust a machine that is in motion. Always remove spark plug wire before performing service.

Always replace safety shields after servicing.

If machine must be serviced in the raised position, jack or block it up to prevent it from accidentally falling and injuring someone.

Be sure the park brake is set before operating.

Do not allow children to operate this equipment.

Do not allow riders on the wagon or pickup.

Use speeds and caution dictated by the terrain being traversed. Do not operate on any slope steep enough to cause tipping or loss of control.

Be sure all personnel are clear of the immediate area before operating.

Read and understand the operator's manual and require all other persons who will operate the equipment to do the same.

If operating on public roadways, where legal, be certain all lighting is operating properly and observe all traffic laws.

Attach a slow moving vehicle emblem to the rear of the trailing implement.

Beware of increased stopping distances and control effort when operating with implements attached.

Be familiar with all controls and be prepared to stop engine and equipment quickly in an emergency.

If seed or seed treatment is dusty or dirty, wear a full-face respirator.

FAILURE TO HEED MAY RESULT IN PERSONAL INJURY OR DEATH.

GENERAL INFORMATION

SHIPMENT CHECKLIST

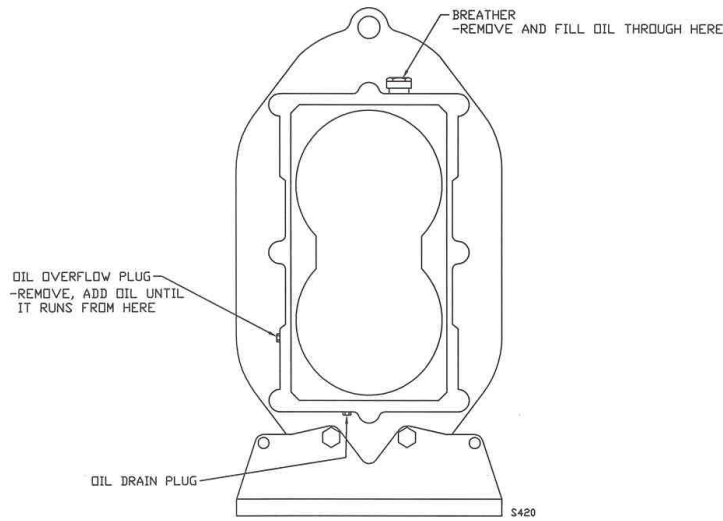
Your Seed Jet II is shipped as a complete unit in one container. Please check that the following items are received in the container:

- Power Unit Assembly
- Hopper Assembly
- Bolt Bag, Seed Jet II
- Seed Jet II Hose Assembly
- Pair of Hopper Brackets
- Cyclone Cable Assembly
- Cyclone Exhaust Kit
- 15' of Rubber Flex Hose

NOTE: Gasoline, oil and a 12-Volt battery (Group 58 or 26-70) will be required before the unit can be operated.

DO NOT START ENGINE OR USE BLOWER BEFORE FILLING WITH PROPER LUBRICANTS. ENGINE HAS AN OIL LEVEL SENSOR; OIL LEVEL MUST BE FULL ON DIPSTICK. DO NOT OVERFILL!!

ASSEMBLY INSTRUCTIONS



SEED JET BLOWER POWER UNIT SET UP

1. Add oil to blower gear case. **DO NOT OVERFILL.** 8 oz., 80W-140 gear oil (ISO220, 5EP, GL-5 service grade). Lubricate the bearings using Shell Darina EP NLG grade 2 grease.
2. Fill crankcase of engine with oil. (High quality SAE 30 weight, SE, SF or SG service grade)
3. Fill gasoline tank with clean, fresh lead free gasoline (85 octane).

NOTE: Engine Manufacturer does not recommend the use of gasoline, which contains alcohol such as gasohol. If gasoline with alcohol is used, it must not contain more than 10% Ethanol and MUST be removed from the engine during storage. DO NOT use gasoline-containing methanol.

4. Install and clamp securely a 12-volt battery, Group 58 or 26-70.
5. Check that all electrical connections are tight.
6. Check tension of drive belt.
7. Ensure that all safety shields are in place.

NOTE: For questions concerning warranty on the engine or blower contact the corresponding manufacturer or the local service/retail outlet.

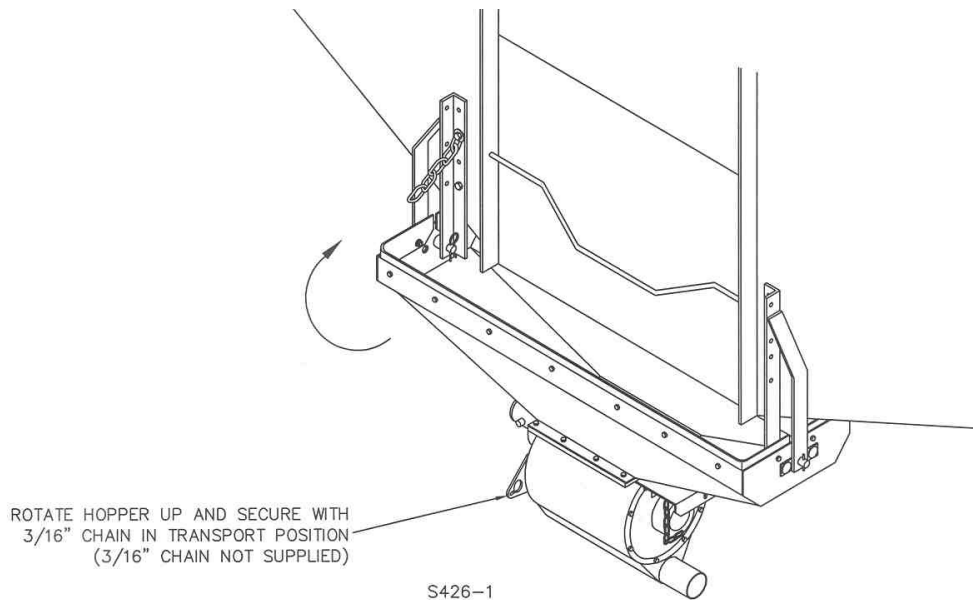
ASSEMBLY INSTRUCTIONS

HOPPER UNIT SET UP

With the assistance of another person and/or lifting equipment, position the hopper assembly next to the discharge slide door of your gravity wagon. The hopper should be level once attached.

The brackets supplied are of a universal type and it may be necessary to drill extra holes in the frame of your wagon to attach these parts. The long pins and spacers provided should accommodate most sizes of wagons. Install the 3/16" x 1 1/4" roll pin onto the hopper pins before attaching the hopper to the brackets.

***CAUTION:** Ground clearance of wagon is reduced when hopper unit is attached, before transporting, rotate the hopper assembly upward and secure with 3/16 chain. Negotiate obstacles and uneven terrain carefully.



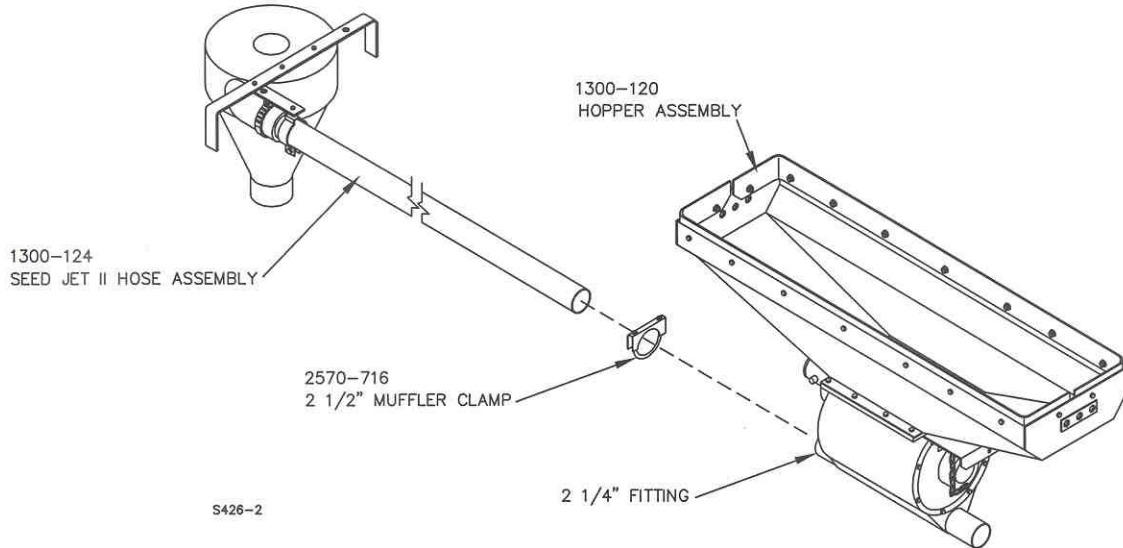
	CAUTION
	KEEP HANDS, FEET, ETC., FOREIGN OBJECTS AND LOOSE CLOTHING AWAY FROM INLET AND DISCHARGE OPENINGS TO AVOID INJURY OR DAMAGE WHEN VALVE IS TO BE OPERATED. DO NOT OPERATE WITHOUT ALL PINCH POINTS PROPERLY GUARDED. CONSULT INSTRUCTION MANUAL PRIOR TO INSTALLATION, START UP, OR PERFORMING ANY MAINTENANCE WORK.
	2565-333

	WARNING
	Chemicals or flying particles may cause eye, skin, or breathing problems. Wear face mask, gloves and goggles. Ear protection is also required due to loud noise. <u>Read and follow safety instructions on the chemical supplier's label.</u>
	2565-457

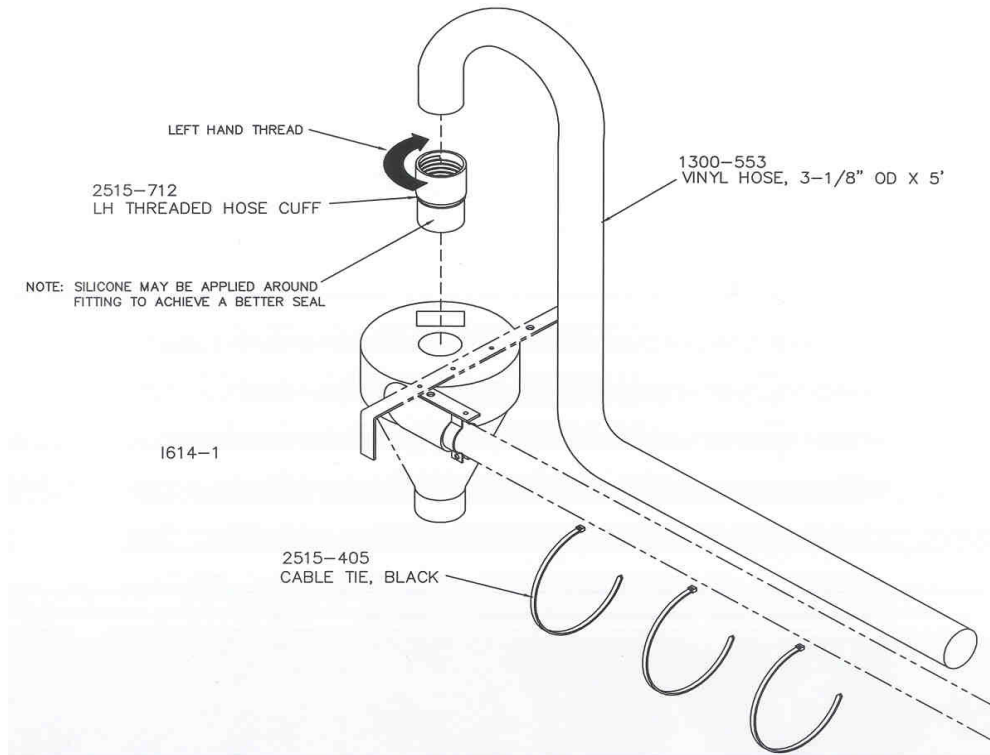
ASSEMBLY INSTRUCTIONS

35' SEED HOSE ASSEMBLY

STEP 1. Attach the 1300-124 seed hose assembly to the 2 1/4" airlock fitting and secure with the 2570-716 muffler style clamp. DO NOT OVER TIGHTEN THE CLAMP.

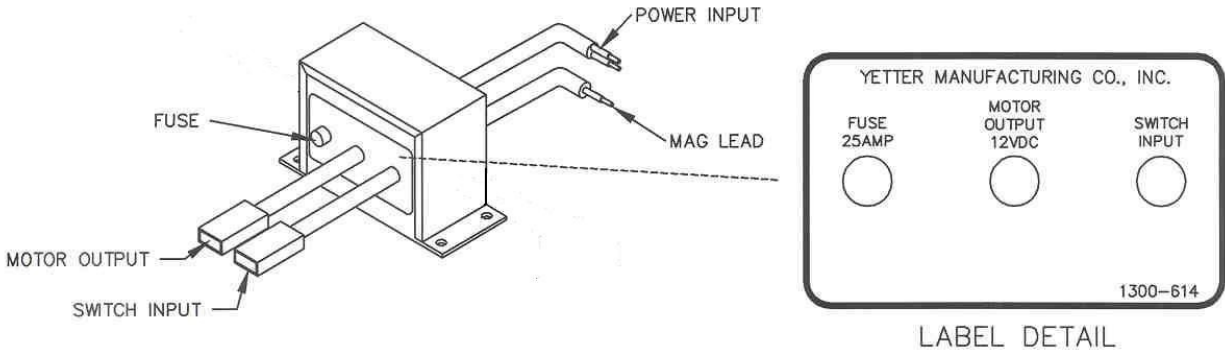


STEP 2. Attach the 1300-166 cyclone exhaust kit to the seed cyclone. Left hand thread the 2515-712 hose cuff onto the 1300-553 3 1/8" OD vinyl hose. Then insert the hose and cuff assembly into the top of the cyclone. Using plastic tie straps, tie the vinyl hose to the stainless steel seed hose using the (3) 2515-405 black cable ties.

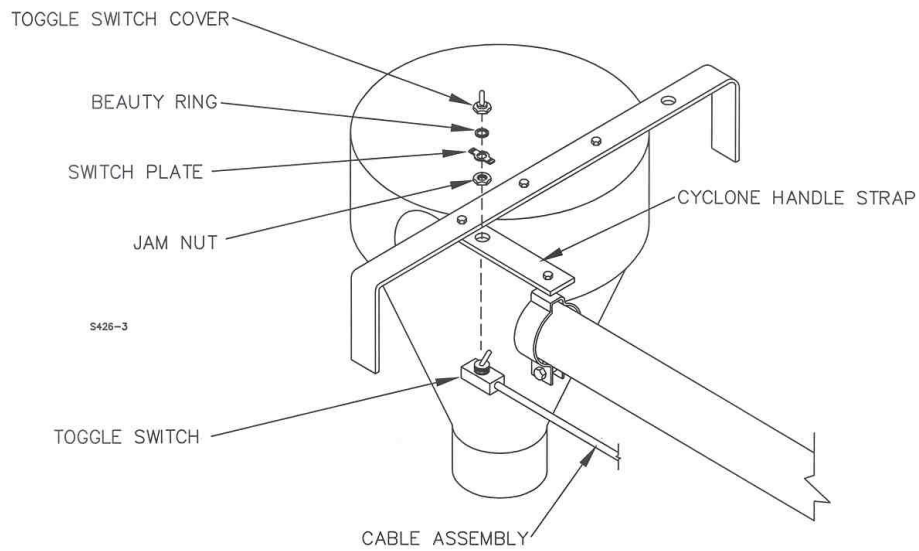


ASSEMBLY INSTRUCTIONS

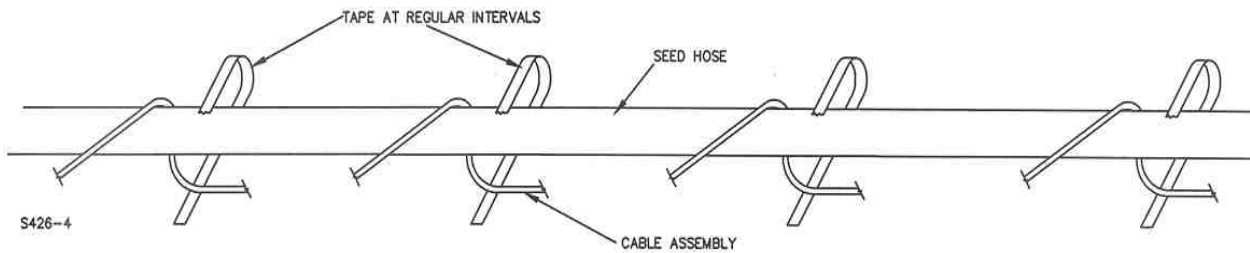
STEP 3. Attach the 1300-163 cable assembly to the 1300-124 seed hose assembly. Connect the 1300-163 cable to the power unit's module at the plug connector labeled "switch input". Inspect the plug connector for dirt, debris or bent pins; clean and repair the connectors if necessary.



STEP 3. CONTINUED....Coil the cable assembly around the seed hose. Install the toggle switch to the cyclone handle and secure with the jam nut.



STEP 4. Tape the seed hose assembly and the cable assembly together at regular intervals to prevent snagging and damaging of the cable assembly.



SYSTEM HOOK UP AND USE

These instructions are to describe the typical set up of the Seed Jet II on a gravity flow wagon towed by a pickup truck.

1. Place power unit assembly in pickup bed and hitch truck to gravity wagon.
2. Assemble the rubber flex hose from the blower to inlet side of airlock using the quick coupler half provided and four hose clamps along with sufficient length of hose. Less hose will be required if the tailgate is lowered. Attach the hose, where required, to the frame of the wagon with cable ties (not supplied) to prevent interference with any moving parts of the wagon such as steering mechanisms or tires.
3. Run the duplex wire along a similar route to the hose and secure where necessary to prevent interference with any moving parts of the wagon such as steering mechanisms or tires.
4. After uncoupling the quick coupler at the blower and weather pack wire connector, the pickup truck may be quickly and easily unhitched from wagon for other uses.
5. The roll of stainless steel flex hose is to be connected to the airlock output.
6. To prolong engine and blower life always allow the engine to run at fast idle for at least a minute before running at full throttle. In operation the engine must run at full throttle for satisfactory performance of the seed system.
7. The switch mounted on the cyclone controls the rotation of the airlock, powered by the 12v motor. Correct airlock rotation is clockwise on the end of the shaft opposite the electric motor.




DANGER: BEWARE OF UNEXPECTED START UP BY ANOTHER PERSON.

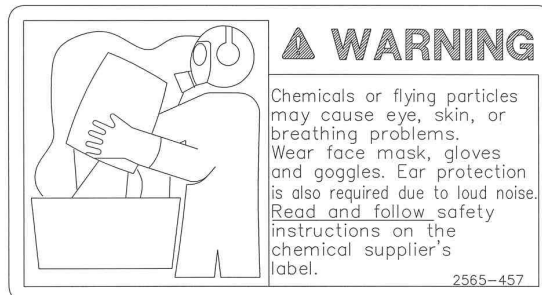
8. Adjust slide door opening on gravity wagon so as to keep hopper full but not overflowing. It is advisable to close slide door and empty hopper before transporting the unit. Seed left in the airlock and exposed to moisture could swell and damage the airlock assembly.
9. Adjust the slide gate in bottom of hopper to maximum opening without overloading the engine and blower.
10. Always shut off airlock and allow hose to clear of grain before throttling down the engine and shutting off the whole system.

NOTE: There is a time delay from turning off the switch to when the material quits flowing from the cyclone, some practice may be necessary for precise filling of seed boxes!

MAINTENANCE

 **WARNING:** Never clean, lubricate or adjust a machine that is in motion. Failure to heed may result in serious personal injury or death.

1. Inspect daily and clean safety decals. Replace if torn or no longer functional.
2. Inspect daily the air cleaner element and clean or replace as required.
3. Inspect daily and retighten, as required, all bolts on the power unit and assemblies.
4. Inspect daily and repair, as required, all air hoses and fittings.
5. See blower manual for proper lubrication.
6. Inspect, refill and replace the blower oil per the instructions in the blower manual.
7. Inspect the airlock assembly, it must turn freely.
8. Do not allow the airlock assembly and the blower to be exposed to water.
9. Lubricate the airlock with “fogging oil” before and after the in-use season.
10. Clean and lubricate the machine before putting into storage. Do not leave seed or seed treatments/inoculants in or near the airlock.



STORAGE

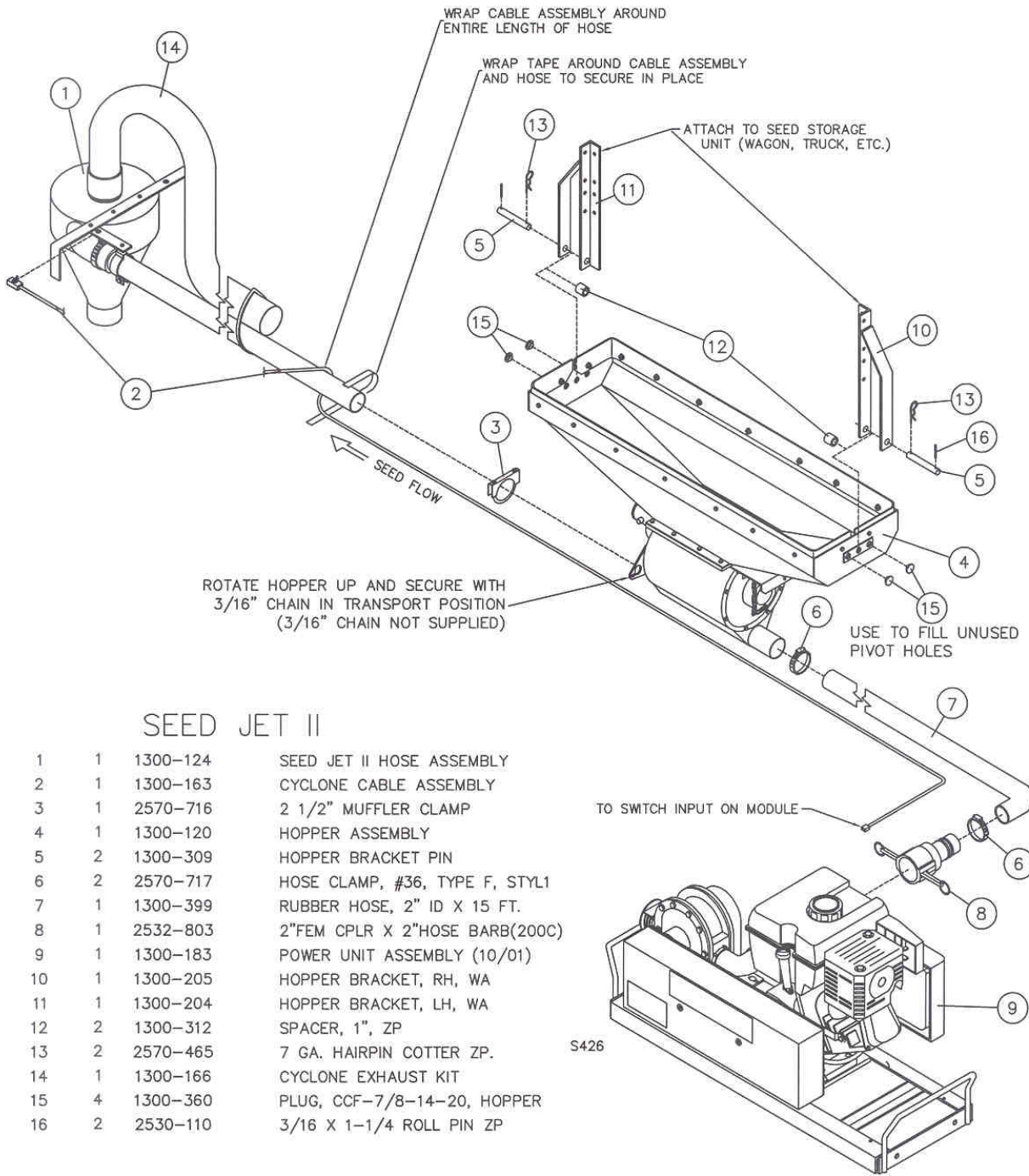
1. Inspect, refill and replace the blower oil per the instructions in the blower manual. Use a high quality hydraulic oil.
2. Inspect the airlock assembly, it must turn freely.
3. Do not allow the airlock assembly and blower to be exposed to water, moisture or condensation. Store in a clean dry area. NOTE: If airlock and/or blower are exposed to water they will rust and may cause **NON-REPAIRABLE** internal damage.
4. Lubricate the airlock and blower with “fogging oil” before and after the in-use season.
5. Clean and lubricate the machine before putting into storage. Do not leave seed or seed treatments/inoculants in or near the airlock.
IMPORTANT: Do Not Use a pipe wrench to free a stuck airlock.
6. Remove hoses from all fittings, cap or cover the hoses, airlock and blower fittings to repel rodents and moisture and to seal in lubricants.
7. Gasoline engines stored over 30 days need to be protected or drained of fuel to prevent gum from forming in fuel system or essential carburetor parts. For gasoline engine protection, we recommend use of Briggs & Stratton fuel stabilizer available from an authorized Briggs & Stratton service dealer. Mix stabilizer with fuel tank or storage container. Run engine for a short time to circulate stabilizer through carburetor. Engine and fuel can be stored up to 24 months.

NOTE: If stabilizer is not used or if engine is operating on gasoline containing alcohol, e.g. gasohol, remove all fuel from tank and run engine until it stops from lack of fuel.

STORAGE PROCEDURES FOR GAS/LPG/NG ENGINES

1. Change oil.
2. Remove spark plug and pour about 15 ml (1/2oz.) of engine oil into cylinder. Replace spark plug and crank slowly to distribute oil.
3. Clean chaff and debris from cylinder and cylinder head fins, under finger guard and behind muffler.
4. Store in a clean and dry area, but NOT near a stove, furnace or water heater which uses a pilot light or any device that create a spark.

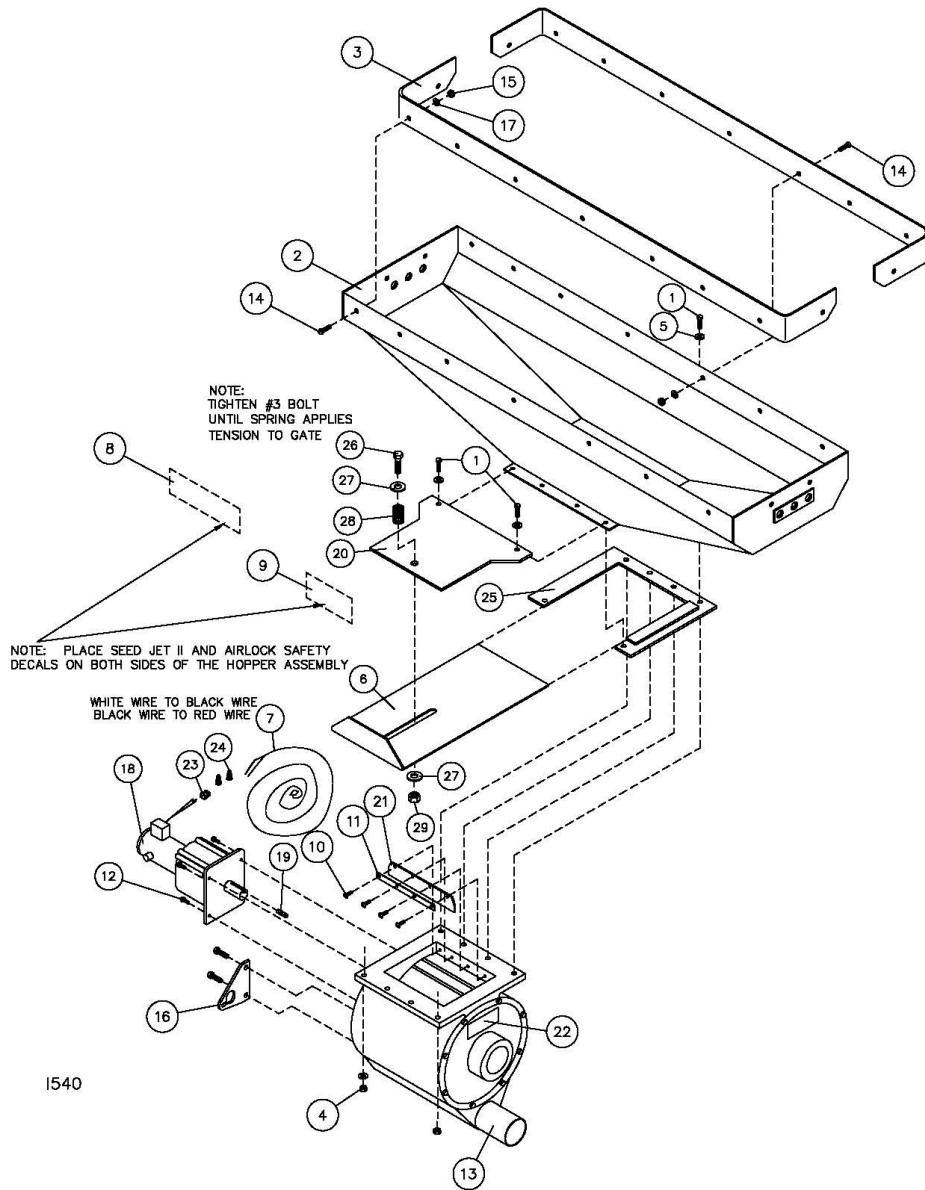
PARTS IDENTIFICATION



SEED JET II

1	1	1300-124	SEED JET II HOSE ASSEMBLY
2	1	1300-163	CYCLONE CABLE ASSEMBLY
3	1	2570-716	2 1/2" MUFFLER CLAMP
4	1	1300-120	HOPPER ASSEMBLY
5	2	1300-309	HOPPER BRACKET PIN
6	2	2570-717	HOSE CLAMP, #36, TYPE F, STYL1
7	1	1300-399	RUBBER HOSE, 2" ID X 15 FT.
8	1	2532-803	2" FEM CPLR X 2" HOSE BARB(200C)
9	1	1300-183	POWER UNIT ASSEMBLY (10/01)
10	1	1300-205	HOPPER BRACKET, RH, WA
11	1	1300-204	HOPPER BRACKET, LH, WA
12	2	1300-312	SPACER, 1", ZP
13	2	2570-465	7 GA. HAIRPIN COTTER ZP.
14	1	1300-166	CYCLONE EXHAUST KIT
15	4	1300-360	PLUG, CCF-7/8-14-20, HOPPER
16	2	2530-110	3/16 X 1-1/4 ROLL PIN ZP

PARTS IDENTIFICATION

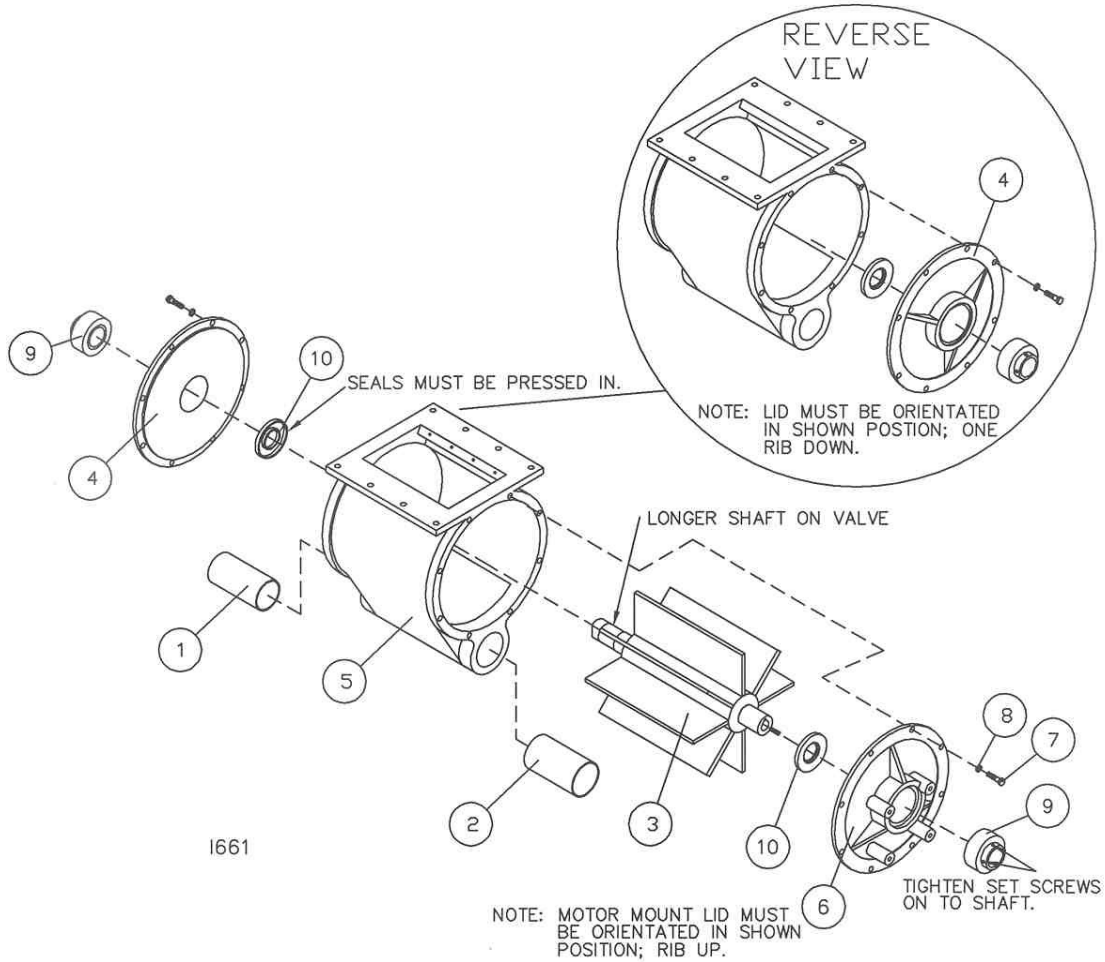


1300-120 HOPPER ASSEMBLY

DET	QTY	PART NO.	DESCRIPTION	DET	QTY	PART NO.	DESCRIPTION
1	6	2502-206	5/16-18 X 1-1/2 HHCS GR 5 ZP	16	1	1300-364	BRACKET
2	1	1300-212	HOPPER W.A.	17	18	2526-151	1/4 STANDARD FLATWASHER ZP
3	2	1300-358	HOPPER SPLASH GUARD	18	1	2514-345	12V DC MOTOR, 1/5HP, PM, 34:1
4	6	2520-205	5/16-18 HEX LOCK NUT ZP	19	1	2590-033	3/16 X 3/16 X 1 KEY STOCK
5	6	2526-201	5/16 STANDARD FLATWASHER ZP	20	1	1300-649	SEED GATE SUPPORT PLATE
6	1	1300-650	SEED GATE	21	1	1300-641	AIRLOCK WIPER
7	1	1300-419	MOTOR POWER CABLE, 23', 14-2, CON	22	1	2565-440	AIRLOCK ROTATION DECAL
8	2	2565-333	SEED JET II DECAL	23	1	1300-409	3/8" ROMEX CONNECTOR
9	2	2565-333	AIRLOCK SAFETY DECAL	24	2	1300-408	GB-3 ORANGE WIRE NUT
10	4	2511-154	#10-24 X 1/2 PAN HD MACH SCR ZP	25	1	1300-256	SEED GATE SPACER W.A.
11	1	1300-642	WIPER BACKING PLATE	26	1	2502-351	1/2-13 X 2 HHCS GR 5 ZP
12	4	2510-107	1/4-20X1HXSKT GB W/TRDLCK	27	2	2526-355	1/2 FLAT WASHER HARD'ND ZYD
13	1	1300-119	AIR LOCK ASSEMBLY	28	1	2550-769	SPRING, ADJUSTMENT PIN, ZYD
14	18	2502-105	1/4-20 X 3/4 HHCS GR 5 ZP	29	1	2520-357	1/2-13 LOCK HEX NUT ZP
15	18	2520-152	1/4-20 HEX NUT ZP				

REVISED 11/25/09

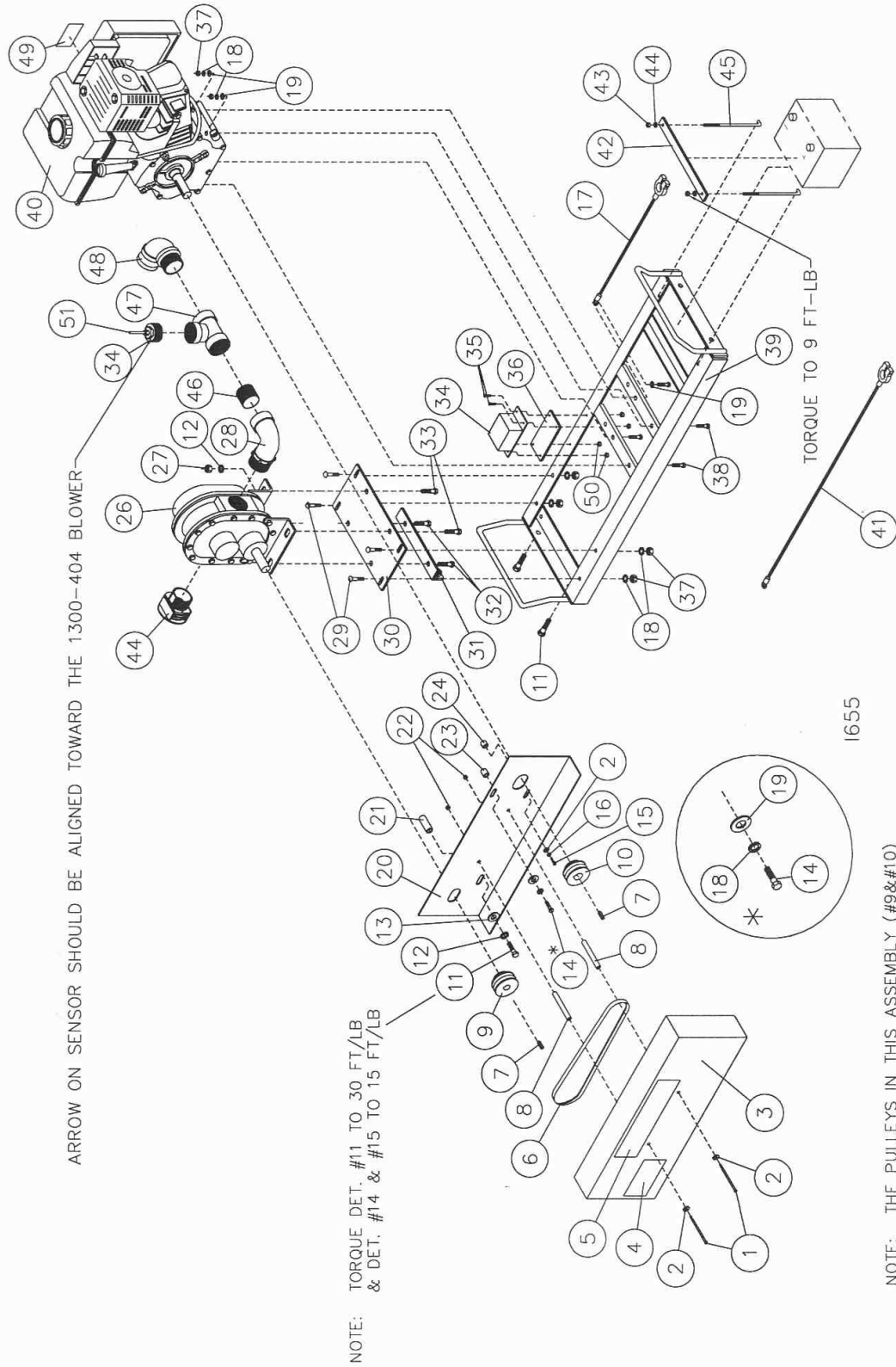
PARTS IDENTIFICATION



1300-119 – AIRLOCK ASSEMBLY

DET	QTY	PART NO.	DESCRIPTION
1	1	1300-593	2" AIRLOCK FITTING
2	1	1300-594	2 1/4" AIRLOCK FITTING
3	1	1300-571	AIRLOCK VANE (7/00)
4	1	1300-430	AIR LOCK LID
5	1	1300-431	AIR LOCK MAIN BODY
6	1	1300-434	MOTOR MOUNTING LID
7	16	2502-198	5/16-18 X 1 HHCS GR.5 ZP
8	16	2525-201	5/16 MED. LOCKWASHER ZP
9	2	2550-118	BEARING, MCGILL #ER20S
10	2	2550-062	SEAL, CHICAGO RAWHIDE #CR12631

PARTS IDENTIFICATION

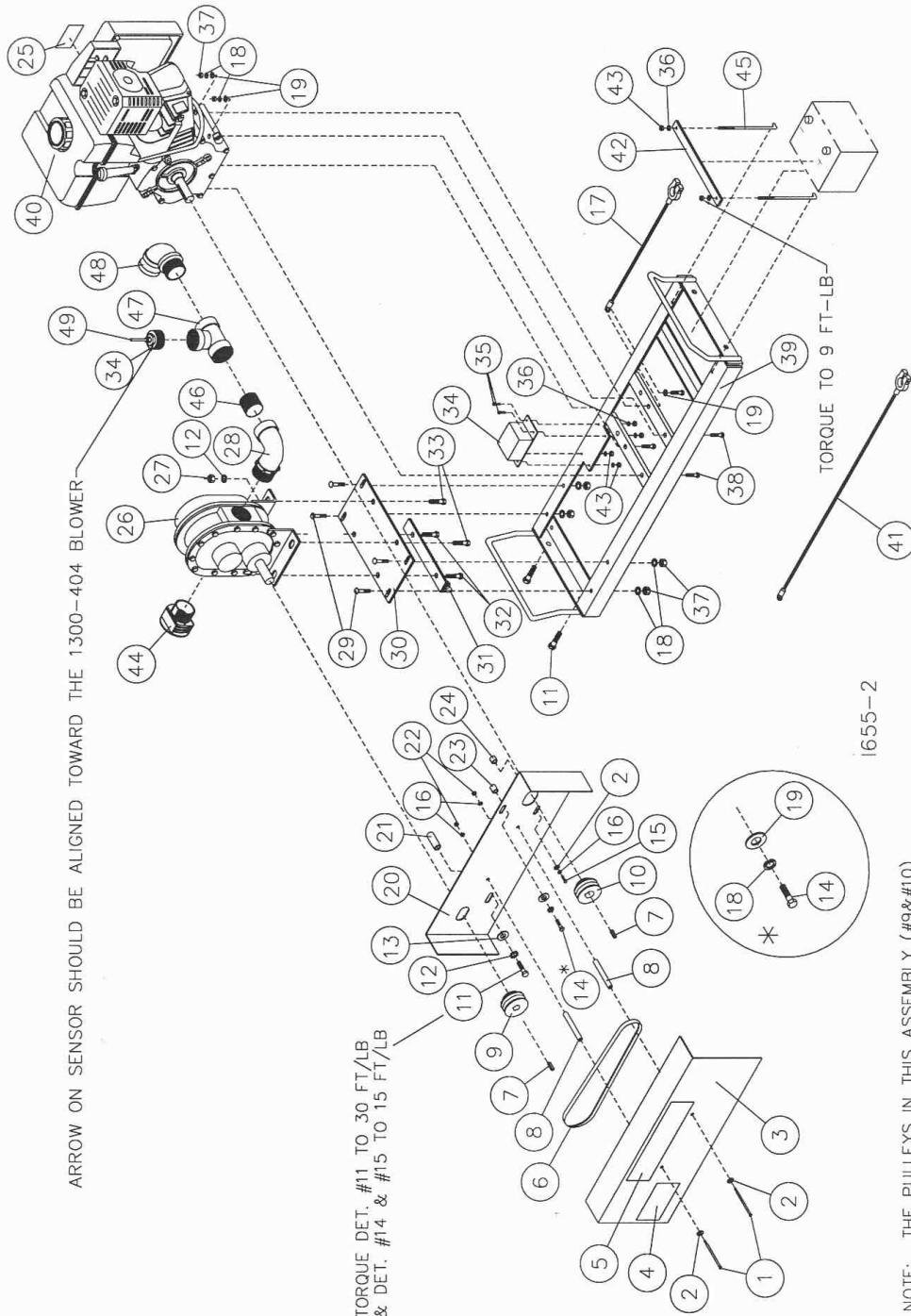


PARTS IDENTIFICATION

1300-183 POWER UNIT ASSEMBLY (10/01) - (01/03)

DET	QTY	PART NO.	DESCRIPTION	DET	QTY	PART NO.	DESCRIPTION
1	2	2502-224	5/16-18 X 4 HHCS GR 5 ZYD	26	1	1300-404	BLOWER, ROOTS 33 URAL, BLACK
2	3	2526-201	5/16 STANDARD FLATWASHER ZYD	27	4	2520-352	1/2-13 HEX NUT ZYD
3	1	1300-238	SHIELD FRONT	28	2	2532-827	2" POLY PIPE STREET ELBOW 90°
4	1	2565-457	EYE, EAR, & FACE WARNING DECAL	29	4	2505-260	3/8-16 X 1 CAR BLT GR 5 ZYD
5	1	2565-439	SEED JET II DECAL	30	1	1300-385	BLOWER MOUNT PLATE
6	1	1300-617	V BELT, 2/3V450 BELT	31	1	1300-217	BLOWER ADJUSTMENT W.A.
7	2	2590-035	1/4 X 1/4 X 1 KEY	32	2	2502-317	1/2-13 X 1-3/4 HHCS GR. 5 ZYD
8	2	1300-556	.371DX1/20DX3-1/8 SHIELD BUSH.	33	2	2502-294	1/2-13 X 1-1/2 HHCS GR. 5 ZYD
9	1	1300-616	PULLEY, 2F3V28 X 3/4"	34	1	1300-614	SOLENOID INTERFACE MODULE (10/01)
10	1	1300-615	PULLEY, 2F3V28 X 1"	35	4	2502-105	1/4-20 X 3/4 HHCS GR.5 ZYD
11	3	2502-296	1/2-13 X 2-1/2 HHCS GR 5 ZYD	36	1	1300-406	MODULE MOUNT PLATE
12	5	2525-352	1/2 MED LOCKWASHER ZYD	37	8	2520-251	3/8-16 HEX NUT ZYD
13	1	2526-351	1/2 STANDARD FLATWASHER ZYD	38	4	2502-240	3/8-16 X 2 HHCS GR5 ZYD
14	1	2502-245	3/8-16 X 1-3/4 HHCS GR 5 ZYD	39	1	1300-245	POWER UNIT FRAME W.A. (8/00)
15	1	2502-213	5/16-24 X 1-1/2 HHCS GR. 5 ZYD	40	1	1300-613	MOTOR, B&S 11HP (235437)
16	1	2525-201	5/16 MED. LOCKWASHER ZYD	41	1	2514-311	TOP TERM BAT CABLE,6GA X 30"
17	1	2514-312	TOP TERM BAT CABLE, 6GA. X 15"	42	1	1300-383	BATTERY CLAMP, PAINTED
18	9	2525-251	3/8 MED. LOCKWASHER ZYD	43	2	2520-151	1/4-20 HEX NUT ZYD
19	6	2526-251	3/8 STANDARD FLATWASHER ZYD	44	2	2525-151	1/4 MED. LOCK WASHER ZYD.
20	1	1300-555	SHIELD MOUNT	45	2	1300-407	J-BOLT, 1/4-20 X 7 1/2 ZYD
21	1	1300-557	.531DX3/40DX1-13/16"BLWR SPCR	46	1	2532-826	2" SHORT POLY PIPE NIPPLE
22	2	2520-205	5/16 HEX LOCK NUT ZYD	47	1	2532-825	2" POLY PIPE TEE
23	1	1300-612	.385 IDX.625 ODX.75 LONG BUSH.	48	1	2532-802	2" MALE ADPT X 2" MALE NPT(200F)
24	1	1300-611	.313 IDX.75 ODX19/32 LONG BUSH.	49	1	2565-481	ENGINE STOP DECAL
25	1	2532-828	2" VENT CAP W/SCREEN	50	4	2520-152	1/4-20 HEX LOCK NUT ZYD
				51	1	1300-637	MODULE SWITCH ASSEMBLY
						1300-638	MODULE SWITCH

PARTS IDENTIFICATION



PARTS IDENTIFICATION

1300-183 POWER UNIT ASSEMBLY (01/03 - 11/06)

DET	QTY	PART NO.	DESCRIPTION	DET	QTY	PART NO.	DESCRIPTION
1	2	2502-224	5/16-18 X 4 HHCS GR 5 ZP	26	1	1300-404	BLOWER, ROOTS 33 URAL, BLACK
2	3	2526-201	5/16 STANDARD FLATWASHER ZP	27	4	2520-352	1/2-13 HEX NUT ZP
3	1	1300-623	SHIELD FRONT	28	1	2532-827	2" POLY PIPE STREET ELBOW 90°
4	1	2565-457	EYE, EAR, & FACE WARNING DECAL	29	4	2505-260	3/8-16 X 1 CAR BLT GR 5 ZP
5	1	2565-439	SEED JET II DECAL	30	1	1300-385	BLOWER MOUNT PLATE
6	1	1300-617	V BELT, 2/3V450 BELT	31	1	1300-217	BLOWER ADJUSTMENT W.A.
7	2	2590-035	1/4 X 1/4 X 1 KEY	32	2	2502-317	1/2-13 X 1-3/4 HHCS GR. 5 ZP
8	2	1300-556	.371DX1/20DX3-1/8 SHIELD BUSH.	33	2	2502-294	1/2-13 X 1-1/2 HHCS GR. 5 ZP
9	1	1300-616	PULLEY, 2F3V28 X 3/4"	34	1	1300-614	SOLENOID INTERFACE MODULE (10/01)
10	1	1300-615	PULLEY, 2F3V28 X 1"	35	4	2502-105	1/4-20 X 3/4 HHCS GR.5 Z.P.
11	3	2502-296	1/2-13 X 2-1/2 HHCS GR 5 ZP	36	6	2525-151	1/4 MED. LOCKWASHER ZP
12	5	2525-352	1/2 MED LOCKWASHER ZP	37	8	2520-251	3/8-16 HEX NUT ZP
13	1	2526-351	1/2 STANDARD FLATWASHER ZP	38	4	2502-240	3/8-16 X 2 HHCS GR5 ZP
14	1	2502-245	3/8-16 X 1-3/4 HHCS GR 5 ZP	39	1	1300-245	POWER UNIT FRAME W.A. (8/00)
15	1	2502-213	5/16-24 X 1-1/2 HHCS GR. 5 ZYD	40	1	1300-613	MOTOR, B&S 11HP (235437)
16	3	2525-201	5/16 MED. LOCKWASHER ZP	41	1	2514-311	TOP TERM BAT CABLE,6GA X 30"
17	1	2514-312	TOP TERM BAT CABLE, 6GA. X 15"	42	1	1300-383	BATTERY CLAMP, PAINTED
18	9	2525-251	3/8 MED. LOCKWASHER ZP	43	6	2520-151	1/4-20 HEX NUT ZP
19	6	2526-251	3/8 STANDARD FLATWASHER ZP	44	1	2532-828	2" VENT CAP W/SCREEN
20	1	1300-622	SHIELD BACK	45	2	1300-407	J-BOLT, 1/4-20 X 7 1/2 ZP.
21	1	1300-557	.531DX3/40DX1-13/16"BLWR SPCR	46	1	2532-826	2" SHORT POLY PIPE NIPPLE
22	2	2520-201	5/16 HEX NUT ZP	47	1	2532-825	2" POLY PIPE TEE
23	1	1300-612	.385 IDX.625 ODX.75 LONG BUSH.	48	1	2532-829	90° MALE ADAPTER/2" MALE THREAD
24	1	1300-611	.313 IDX.75 ODX19/32 LONG BUSH.	49	1	1300-637	MODULE SWITCH ASSEMBLY
25	1	2565-481	ENGINE STOP DECAL			1300-638	MODULE SWITCH

REVISED 12/3/03

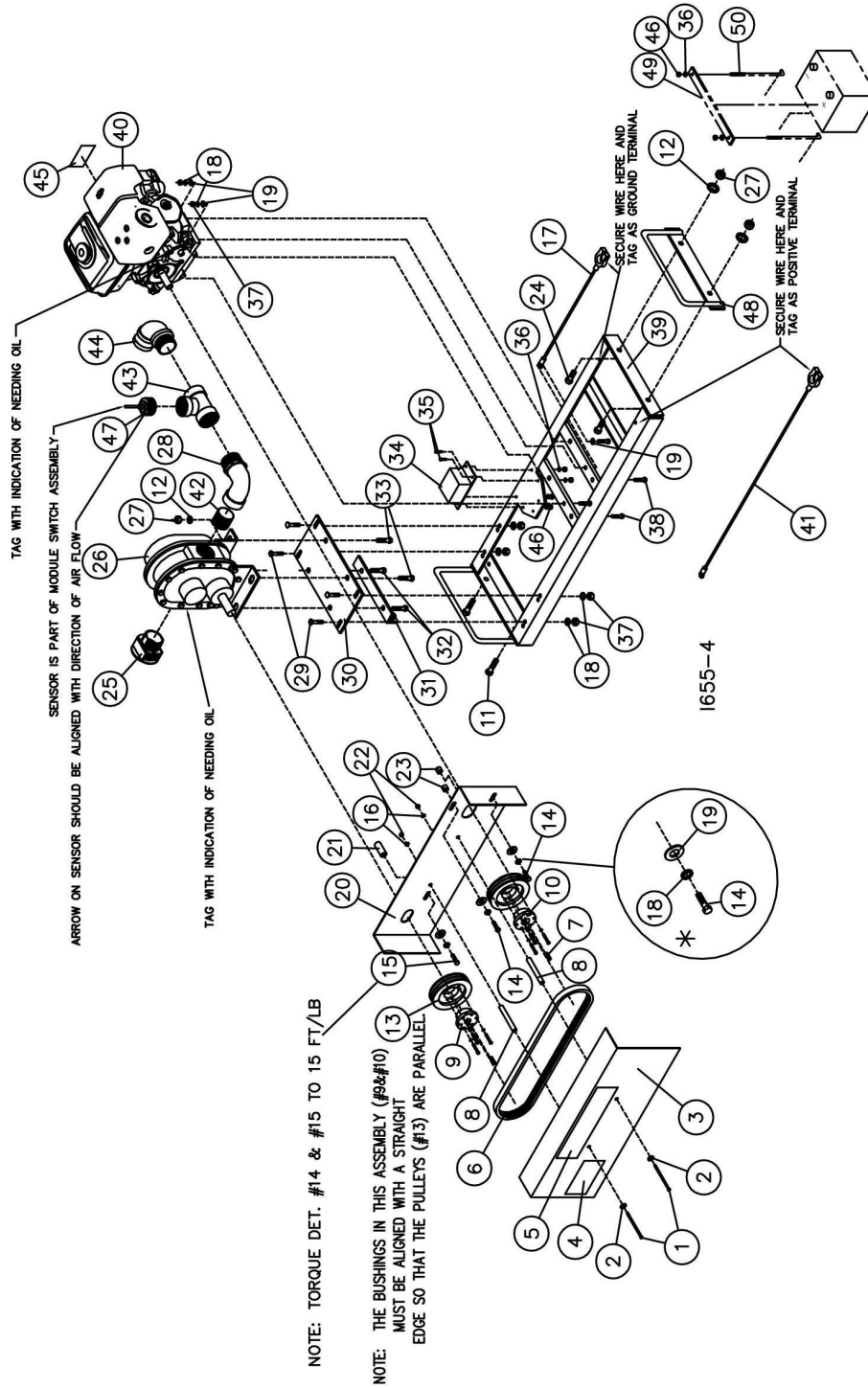
PARTS IDENTIFICATION

1300-183 POWER UNIT ASSEMBLY (12/06 - 12/2011)							
DET	QTY	PART NO.	DESCRIPTION	DET	QTY	PART NO.	DESCRIPTION
1	2	2502-224	5/16-18 X 4 HHCS GR 5 ZP	27	4	2520-352	1/2-13 HEX NUT ZP
2	2	2526-201	5/16 STANDARD FLATWASHER ZP	28	1	2532-827	2" POLY PIPE STREET ELBOW 90°
3	1	1300-623	SHIELD FRONT	29	4	2505-260	3/8-16 X 1 CAR BLT GR 5 ZP
4	1	2565-457	EYE, EAR, & FACE WARNING DECAL	30	1	1300-385	BLOWER MOUNT PLATE
5	1	2565-439	SEED JET II DECAL	31	1	1300-217	BLOWER ADJUSTMENT W.A.
6	1	1300-648	V-BELT, 3VX500	32	2	2502-317	1/2-13 X 1-3/4 HHCS GR. 5 ZP
7	1	2590-035	1/4 X 1/4 X 1 KEY	33	2	2502-294	1/2-13 X 1-1/2 HHCS GR. 5 ZP
8	2	1300-556	.37IDX1/20DX3-1/8 SHIELD BUSH.	34	1	1300-614	SOLENOID INTERFACE MODULE (10/01)
9	1	1300-644	3/4" SPLIT TAPER BUSHING	35	4	2502-105	1/4-20 X 3/4 HHCS GR.5 Z.P.
10	1	1300-645	1" SPLIT TAPER BUSHING	36	6	2525-151	1/4 MED. LOCKWASHER ZP
11	2	2502-316	1/2-13 X 3-1/2 HHCS GR 5 ZP	37	8	2520-251	3/8-16 HEX NUT ZP
12	4	2525-352	1/2 MED LOCKWASHER ZP	38	4	2502-240	3/8-16 X 2 HHCS GR5 ZP
13	2	1300-643	5" PULLEY, 23V500 SH	39	1	1300-245	POWER UNIT FRAME W.A. (8/00)
14	2	2502-232	3/8-16 X 1 1/2 HHCS GR 5 ZYD	40	1	1300-613	MOTOR, B&S 11HP (235437)
15	1	2502-246	3/8-16 X 3 HHCS GR5 ZP	41	1	2514-311	TOP TERM BAT CABLE,6GA X 30"
16	2	2525-201	5/16 MED. LOCKWASHER ZP	42	1	2532-826	2" SHORT POLY PIPE NIPPLE
17	1	2514-312	TOP TERM BAT CABLE, 6GA. X 15"	43	1	2532-825	2" POLY PIPE TEE
18	10	2525-251	3/8 MED. LOCKWASHER ZP	44	1	2532-829	90° MALE ADAPTER/2" M THD
19	7	2526-251	3/8 STANDARD FLATWASHER ZP	45	1	2565-481	ENGINE STOP DECAL
20	1	1300-647	SHIELD BACK (2006)	46	6	2520-151	1/4-20 HEX NUT ZP
21	1	1300-646	.531IDX3/40DX1.813" BLOWER SPACER	47	1	1300-383	BATTERY CLAMP, PAINTED
22	2	2520-201	5/16-18 HEX NUT ZP	48	2	1300-407	J-BOLT, 1/4-20 X 7 1/2 ZP.
23	2	1300-612	.385 IDX.625 ODX.5 LONG BUSH.				
24	1	1300-637	MODULE SWITCH ASSEMBLY				
25	1	2532-828	2" VENT CAP W/SCREEN				
26	1	1300-404	BLOWER, ROOTS 33 URAL, BLACK				

REVISED 12/19/06

PARTS IDENTIFICATION

1300-183 POWER UNIT ASSEMBLY (1/12 - PRESENT)

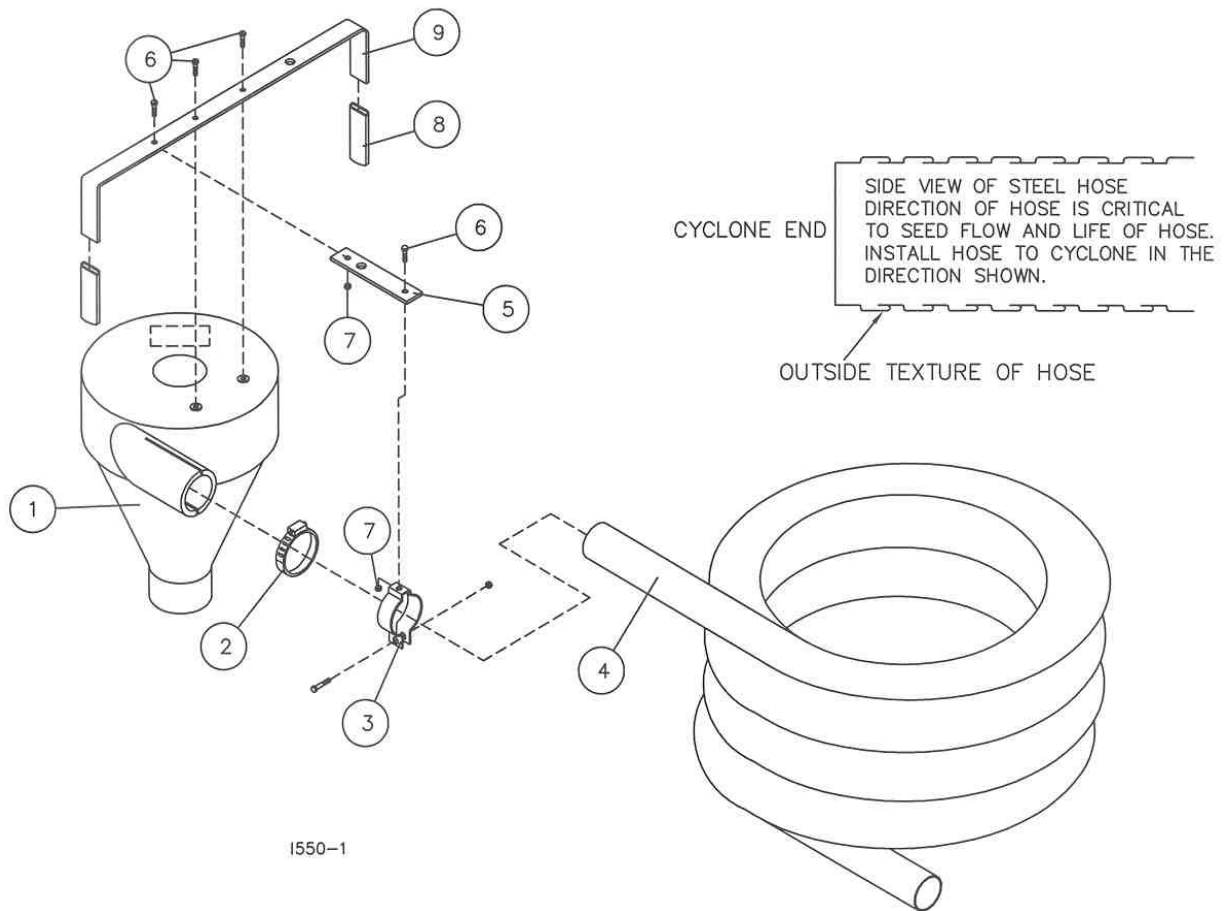


1300-183 POWER UNIT ASSEMBLY (1/12 - PRESENT)

DET	QTY	PART NO.	DESCRIPTION	DET	QTY	PART NO.	DESCRIPTION
1	2	2502-224	5/16-18 X 4 HHCS GR 5 ZP	26	1	1300-404	BLOWER, ROOTS 33 URAL, BLACK
2	2	2526-201	5/16 STANDARD FLATWASHER ZP	27	6	2520-352	1/2-13 HEX NUT ZP
3	1	1300-623	SHIELD FRONT	28	1	2532-827	2" POLY PIPE STREET ELBOW 90°
4	1	2565-457	EYE, EAR, & FACE WARNING DECAL	29	4	2505-260	3/8-16 X 1 CAR BLT GR 5 ZP
5	1	2565-439	SEED JET II DECAL	30	1	1300-385	BLOWER MOUNT PLATE
6	1	1300-648	V-BELT, 3VX500	31	1	1300-217	BLOWER ADJUSTMENT W.A.
7	1	2590-035	1/4 X 1/4 X 1 KEY	32	2	2502-317	1/2-13 X 1-3/4 HHCS GR. 5 ZP
8	2	1300-556	.371DX1/20DX3-1/8 SHIELD BUSH.	33	2	2502-294	1/2-13 X 1-1/2 HHCS GR. 5 ZP
9	1	1300-644	3/4" SPLIT TAPER BUSHING	34	1	1300-614	SOLENOID INTERFACE MODULE (10/01)
10	1	1300-645	1" SPLIT TAPER BUSHING	35	4	2502-105	1/4-20 X 3/4 HHCS GR.5 Z.P.
11	2	2502-316	1/2-13 X 3-1/2 HHCS GR 5 ZP	36	6	2525-151	1/4 MED. LOCKWASHER ZP
12	6	2525-352	1/2 MED LOCKWASHER ZP	37	8	2520-251	3/8-16 HEX NUT ZP
13	2	1300-643	5" PULLEY, 23V500 SH	38	4	2502-240	3/8-16 X 2 HHCS GR5 ZP
14	2	2502-232	3/8-16 X 1 1/2 HHCS GR 5 ZYD	39	1	1300-245	POWER UNIT FRAME W.A. (12/11)
15	1	2502-246	3/8-16 X 3 HHCS GR5 ZP	40	1	1310-586	HONDA 11.5 HP ENGINE
16	2	2525-201	5/16 MED. LOCKWASHER ZP	41	1	2514-311	TOP TERM BAT CABLE,6GA X 30"
17	1	2514-312	TOP TERM BAT CABLE, 6GA. X 15"	42	1	2532-826	2" SHORT POLY PIPE NIPPLE
18	10	2525-251	3/8 MED. LOCKWASHER ZP	43	1	2532-825	2" POLY PIPE TEE
19	7	2526-251	3/8 STANDARD FLATWASHER ZP	44	1	2532-829	90° MALE ADAPTER/2" M THD
20	1	1300-647	SHIELD BACK (2006)	45	1	2565-481	ENGINE STOP DECAL
21	1	1300-646	.5311DX3/40DX1.813" BLOWER SPACER	46	6	2520-151	1/4-20 HEX NUT ZP
22	2	2520-201	5/16-18 HEX NUT ZP	47	1	1300-637	MODULE SWITCH ASSEMBLY
23	2	1300-612	.385 IDX.625 ODX.5 LONG BUSH.	48	1	1300-257	HANDLE MOUNT PLATE WA, SEEDJET
24	2	2502-293	WU/ 1/2-13 X 1-1/4 HHCS GR 5 ZD	49	1	1300-383	BATTERY CLAMP, PAINTED
25	1	2532-828	2" VENT CAP W/SCREEN	50	2	1300-407	J-BOLT, 1/4-20 X 7-1/2 ZP.

REVISED 1/19/12

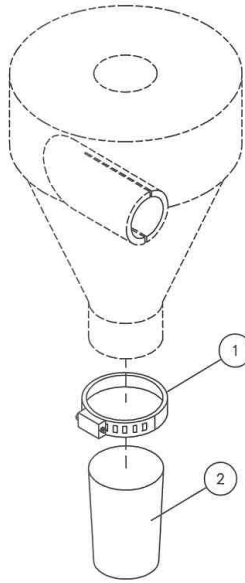
PARTS IDENTIFICATION



1300-124 SEED JET II HOSE ASSEMBLY

Key	Qty.	Part No.	Description
1	1	1300-376	Cyclone, Black
2	1	2570-721	Hose Clamp, SAE #44, Ideal 64,SS
3	1	2570-767	2" Conduit Hanger ZP w/Hardware
4	1	1300-596	2-1/4" ID x 35 Ft. Cotton Lined S.S. Hose
5	1	1300-549	Cyclone Bracket
6	4	2502-105	1/4-20 x 3/4 HHCS Gr. 5 ZP
7	2	2520-152	1/4-20 Lock Hex Nut ZP
8	2	2515-711	Grip, Quadrant Handle
9	1	1300-548	Cyclone Handle

PARTS IDENTIFICATION

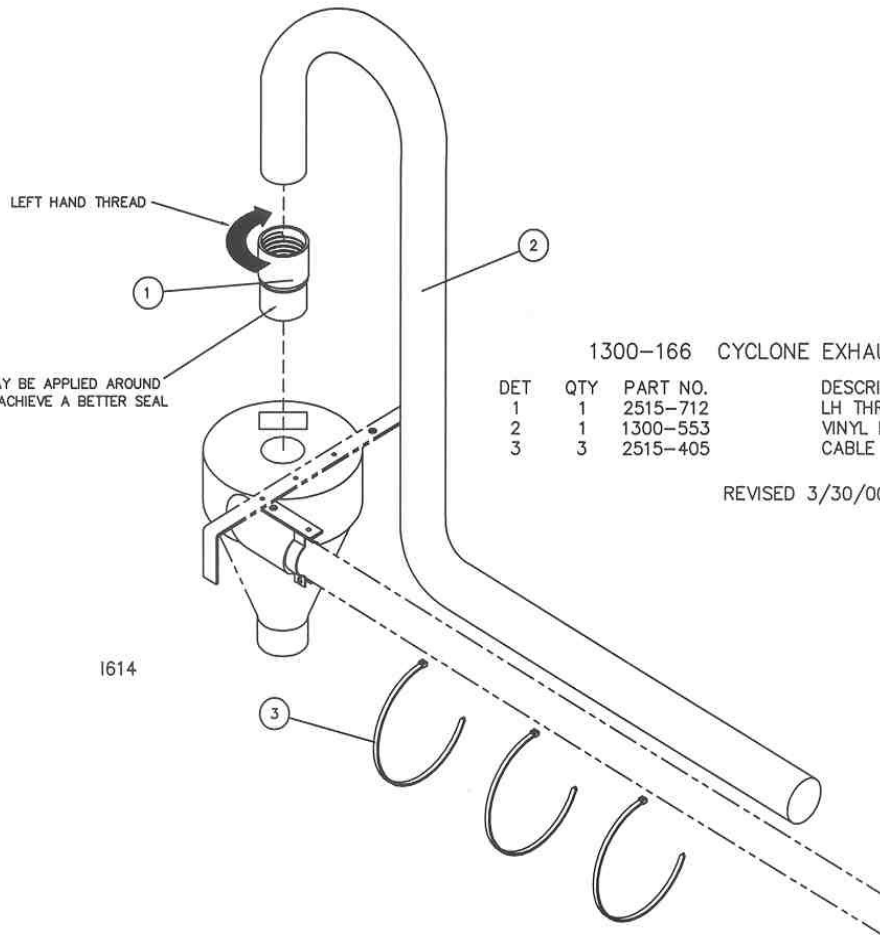


CYCLONE SHUTOFF

DET	QTY	DESCRIPTION
1	1	4 1/2" HOSE CLAMP
2	1	TUBE SOCK, 10" LONG OPEN ON BOTH ENDS

REVISED 9/17/01

S423



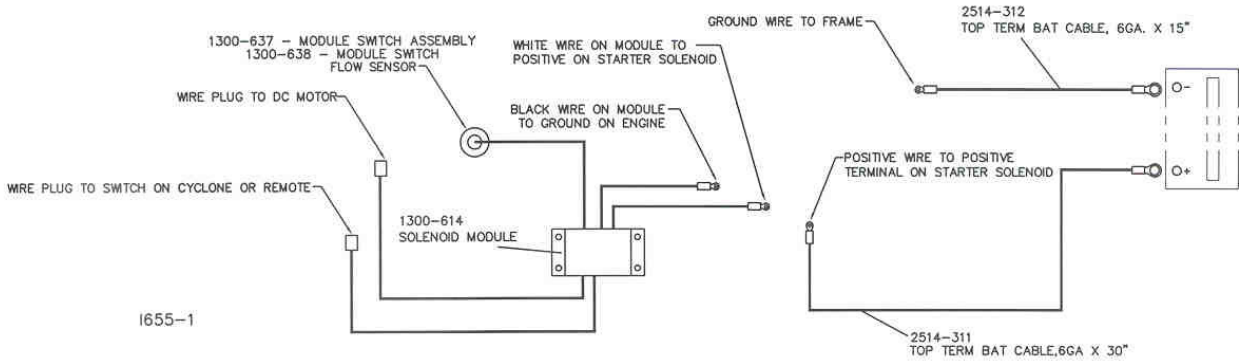
1300-166 CYCLONE EXHAUST KIT

DET	QTY	PART NO.	DESCRIPTION
1	1	2515-712	LH THREADED HOSE CUFF
2	1	1300-553	VINYL HOSE, 3-1/8" OD X 5'
3	3	2515-405	CABLE TIE, BLACK

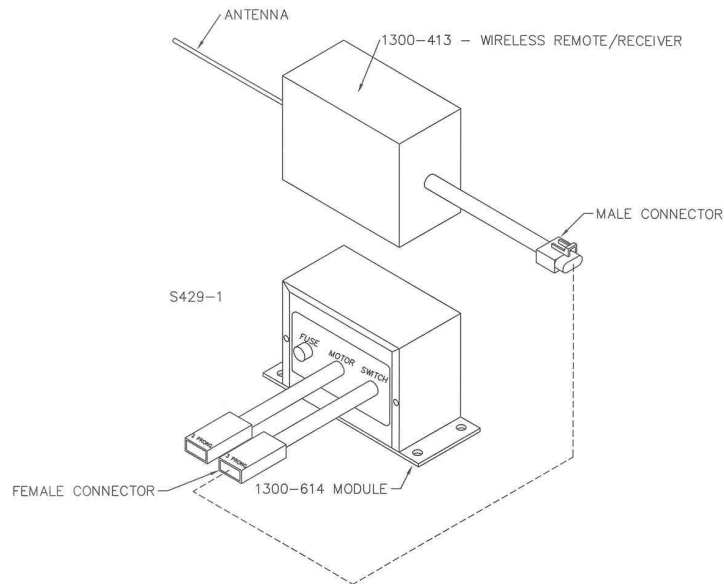
REVISED 3/30/00

POWER UNIT WIRING DIAGRAM

DISCONNECT ALL WIRES AT NEGATIVE TERMINAL OF 12 VOLT BATTERY FOR SAFETY WHILE SERVICING UNIT.



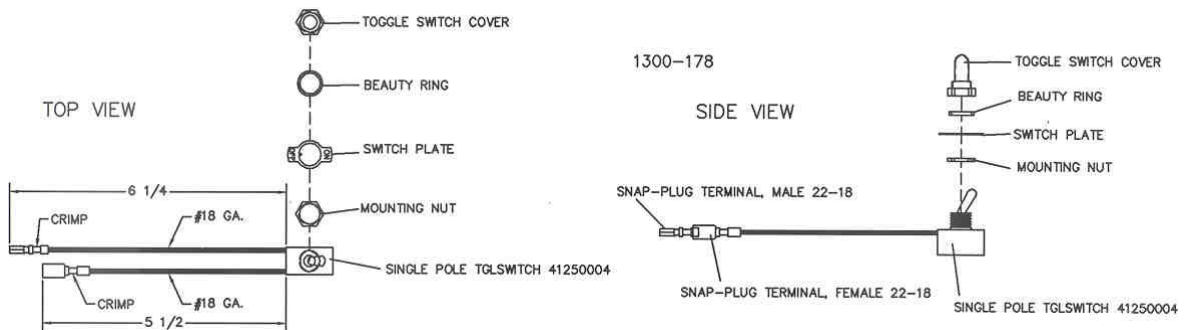
OPTIONAL REMOTE



OPTIONAL REMOTE ASSEMBLY

1. CONNECT THE MALE WIRE CONNECTOR FROM THE 1300-413 REMOTE CONTROL TO THE SWITCH INPUT FEMALE WIRE CONNECTOR OF THE 1300-614 MODULE CONTROL BOX.
2. START THE GASOLINE ENGINE, ADJUST ENGINE THROTTLE LEVER TO "FAST/ RABBIT".
3. CHECK OPERATION OF THE REMOTE CONTROL SWITCH, PUSH BUTTON 1 ON THE REMOTE AND CHECK FOR AIRLOCK OPERATION PUSH BUTTON 1 AGAIN TO SHUT AIRLOCK OFF.
4. IF AIRLOCK FAILS TO SWITCH ON/OFF, CHECK THE FEMALE CONNECTOR FOR BENT PRONGS OR CONTACT YETTER TECHNICAL SERVICE 1-800-447-5777

TOGGLE SWITCH ASSEMBLY BREAKDOWN



TROUBLESHOOTING

Problem	Cause	Solution
Airlock will not turn on/off	Frame mount relay not functioning	Replace frame mounted solenoid
	No voltage from alternator	Check output from alternator
	Loose connections	Check plug in on duplex wires Check connections at 12v motor Check ground and solenoid connections
Airlock will not turn.	Blown fuse	Replace 25 amp round fuse located in the 1300-614 interface module (Automotive type)
	Foreign objects jamming airlock	Remove obstacles
	Key sheared	Check key between motor gearbox and airlock shaft
	12v motor faulty	Check motor operation
Low rate of discharge of grain	Wet seed left in airlock	Remove wet seed
	Lack of air pressure	Check engine is at full throttle Check for air leaks in hose or at couplers
	Airlock running too slow	Ensure 12v supply is correct Overloaded, close up slide gate
Abnormal noises in power unit assembly	Excessive discharge height of cyclone	Reduce height of cyclone
	Drive belt too loose Overloaded blower	Re-tension the V-belt Close up slide gate in hopper
Dust coming out of top of cyclone	Engine problems Blower problems	Refer to engine booklet Refer to blower booklet
	Dusty/dirty seed or seed treatment	Install filter in top of cyclone Wear a full-face respirator

NOTES:

Our name Is getting known

Just a few years ago, Yetter products were sold primarily to the Midwest only. Then we embarked on a program of expansion and moved into the East, the South, the West and now north into Canada. We're even getting orders from as far away as Australia and Africa.

So, when you buy Yetter products . . .you're buying a name that's recognized. A name that's known and respected. A name that's become a part of American agriculture and has become synonymous with quality and satisfaction in the field of conservation tillage.

Thank you.

YETTER MANUFACTURING CO.
COLCHESTER, IL 62326-0358 ☐☐309/776-4111
TOLL FREE 800/447-5777
FAX 309/776-3222
WEBSITE: WWW.YETTERCO.COM
E-MAIL: INFO@YETTERCO.COM

2565-441_REV_D ☐ 02/2012