



# DURAPLACER DRY

## 60'/40' STRIP-TILL/DRY FERTILIZER BANDER

DuraPlacer Dry is a flexible toolbar that can utilize Yetter Strip Freshener CC's or Yetter Nutrient Pro row units to achieve strip-till/strip freshening or low soil disturbance, efficient dry fertilizer banding. DuraPlacer Dry can be equipped with multiple different dry fertilizer delivery systems, including Montag, Lynx Ag, or Salford with capacities ranging from 9 ton to 14 ton and both single or dual bin options. DuraPlacer Dry is offered both as a 60' or 40' toolbar with unmatched toolbar flex and downforce capability. Singles, duals, and CAMSO™ Tracks are all available. The 60' toolbar is designed for application speeds of 7-10 mph to boost productivity with minimum 350 horsepower.



## KEY FEATURES

- Strip-Till/Strip Freshening Application – Can be used to make new strips in the spring or fall, or freshen fall-made strips while combining efficient nutrient application.
- Banding Application – Achieve the benefits of banding fertilizer in the ground by utilizing Yetter Nutrient Pro row units to provide minimal soil disturbance.
- Front-folding toolbar features narrow transport width of 15'3"
- Retractable tongue, along with outer flip wings on 60' toolbar to reduce length in the field.
- Four independent flex hinges across the toolbar and adjustable hydraulic down pressure at each flex point.

### CONTACT FAST

#### WINDOM, MN

4130 Commerce Blvd, Windom, MN 56101

toll free 800-772-9279 | p 507-427-3861 | f 507-427-3030

#### GILMAN, IL

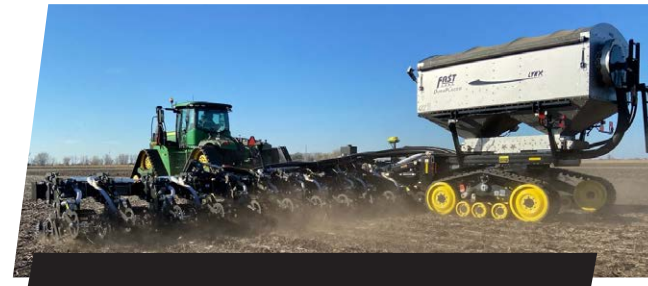
1340 S Crescent, PO Box 236, Gilman, IL 60938

toll free 800-872-8894 | p 815-265-7125 | f 815-265-7130

# TOOLBAR FEATURES



- Four independent flex hinges across the toolbar and adjustable hydraulic down pressure at each flex point to ensure toolbar follows ground contours extremely well
  - Main wings have 6 degrees up-flex and 13 degrees down-flex
  - Flip wings have 9 degrees up and 8 degrees down
- Fold functions run through one hydraulic block/one remote on tractor
- Hydraulic WingKick standard to tilt outer wings up when toolbar is raised to increase ground clearance



## DRY DELIVERY OPTIONS

- Choose from Montag, Lynx Ag, or Salford dry delivery systems
  - Montag
    - 9 ton, GEN 1, single bin (poly tank)
    - 13 ton single or dual bin (stainless steel)
  - Lynx Ag - 14 ton dual bin (stainless steel)
  - Salford ST12 – 12 ton dual bin (poly tanks)
- Blank trailer option to mount a dry delivery system after delivery
- One to four sections for section control, ISO rate controller
- Singles, duals, or CAMSO™ tracks all available



## ROW UNIT OPTIONS

### Yetter Strip Freshener CC

- Build strips in the fall or spring, or utilize to refresh strips – 10” wide strips
- Provides better ride & consistent seed placement, improving emergence
- In-cab console air pressure control on row unit
  - Adjustable air pressure on row cleaners
  - Adjustable air down-pressure on row units
  - Adjustable air pressure on rolling basket
- Parallel linkage for individual row performance

### Yetter Nutrient Pro

- Smooth blade and depth control wheel provides minimal soil disturbance with application depth up to 5”
- Three adjustable down pressure settings and quick adjust depth setting
- Row unit down pressure up to 640 lbs
- Tandem closing system with shark tooth and rubber press wheel



### SPECS

### DURAPLACER DRY

TRANSPORT WIDTH (FULLY ASSEMBLED)	15'3"
TRANSPORT WIDTH (SHIPPING)	11'6"
TRANSPORT HEIGHT	12'3" (60' TOOLBAR)
TOTAL LENGTH IN TRANSPORT	43'8" (LYNX)
TOTAL WEIGHT (EMPTY)	33,000 LBS (LYNX)